

7912-7918

*Metrose Avenue*



Todd Nathanson (818) 501-2204, todd@illicre.com, DRE# 00932779

Rachel Adams (818) 697-9375 , rachel@illicre.com, DRE# 02052879

Please visit us at:



This information has been secured from sources we believe to be reliable, but we make no representations or warranties, expressed or implied, as to the accuracy of the information. References to square footage are approximate. References to neighboring retailers are subject to change, and may not be adjacent to the vacancy being marketed either prior to, during, or after leases are signed. Lessee must verify the information and bears all risk for any inaccuracies.

17547 Ventura Blvd., Ste. 304 · Encino CA 91316 · 818.501.2212/Phone · 818.501.2202/Fax · www.illicre.com · DRE #01834124



7912-7918

# Melrose Avenue

## PROPERTY FEATURES

- ±1,543 SF ground floor available
- Separate 200 SF storage unit available. Office has balconies facing Melrose Ave.
- On the corner of Melrose & Fairfax



Todd Nathanson (818) 501-2204, [todd@illicre.com](mailto:todd@illicre.com), DRE# 00932779  
Rachel Adams (818) 697-9375, [rachel@illicre.com](mailto:rachel@illicre.com), DRE# 02052879

Please visit us at:



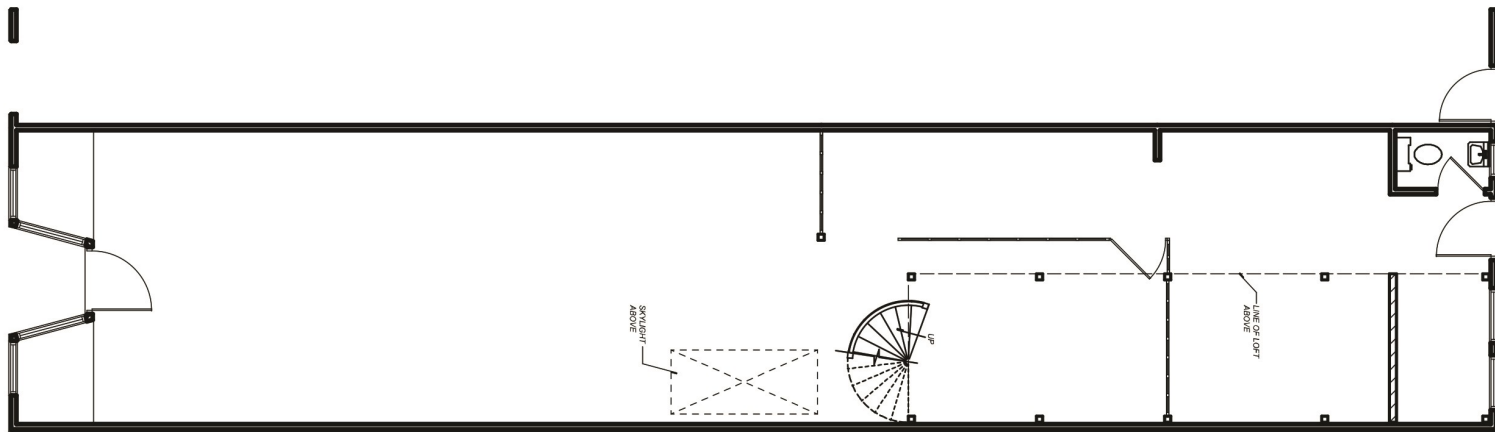
This information has been secured from sources we believe to be reliable, but we make no representations or warranties, expressed or implied, as to the accuracy of the information. References to square footage are approximate. References to neighboring retailers are subject to change, and may not be adjacent to the vacancy being marketed either prior to, during, or after leases are signed. Lessee must verify the information and bears all risk for any inaccuracies.

17547 Ventura Blvd., Ste. 304 · Encino CA 91316 · 818.501.2212/Phone · 818.501.2202/Fax · [www.illicre.com](http://www.illicre.com) · DRE #01834124



# 7912-7918 Melrose Avenue

## SITE PLAN GROUND LEVEL



Todd Nathanson (818) 501-2204, [todd@illicre.com](mailto:todd@illicre.com), DRE# 00932779  
Rachel Adams (818) 697-9375, [rachel@illicre.com](mailto:rachel@illicre.com), DRE# 02052879

Please visit us at:



This information has been secured from sources we believe to be reliable, but we make no representations or warranties, expressed or implied, as to the accuracy of the information. References to square footage are approximate. References to neighboring retailers are subject to change, and may not be adjacent to the vacancy being marketed either prior to, during, or after leases are signed. Lessee must verify the information and bears all risk for any inaccuracies.

17547 Ventura Blvd., Ste. 304 · Encino CA 91316 · 818.501.2212/Phone · 818.501.2202/Fax · [www.illicre.com](http://www.illicre.com) · DRE #01834124



# 7912-7918 *Metrose Avenue*



Todd Nathanson (818) 501-2204, [todd@illicre.com](mailto:todd@illicre.com), DRE# 00932779  
Rachel Adams (818) 697-9375, [rachel@illicre.com](mailto:rachel@illicre.com), DRE# 02052879

Please visit us at:



This information has been secured from sources we believe to be reliable, but we make no representations or warranties, expressed or implied, as to the accuracy of the information. References to square footage are approximate. References to neighboring retailers are subject to change, and may not be adjacent to the vacancy being marketed either prior to, during, or after leases are signed. Lessee must verify the information and bears all risk for any inaccuracies.

17547 Ventura Blvd., Ste. 304 · Encino CA 91316 · 818.501.2212/Phone · 818.501.2202/Fax · [www.illicre.com](http://www.illicre.com) · DRE #01834124



7912-7918

# Melrose Avenue

## AREA AMENITIES

- Rare opportunity to lease a retail space in thriving Melrose shopping district
- Neighbor to Buffalo Exchange
- Located on the famous corner of Melrose and Fairfax

Bank of America

CHUCK'S VINTAGE  
MADE IN THE U.S.A.

REVOLVE

Fred Segal

IMPROV  
COMEDY CLUB

DASH  
BY KARDASHIAN

JONATHAN  
ADLER

GLAMBOUTIQUE  
WHERE FASHION LIVES

MELROSE AVENUE  
CRESCENT HEIGHTS

adidas  
ORIGINALS

Agent  
Provocateur

NORTH FAIRFAX AVENUE

Beth Eluzer Kahal  
Jtzchok Synagogue

Todd Nathanson (818) 501-2204, todd@illicre.com, DRE# 00932779  
Rachel Adams (818) 697-9375, rachel@illicre.com, DRE# 02052879

Please visit us at:

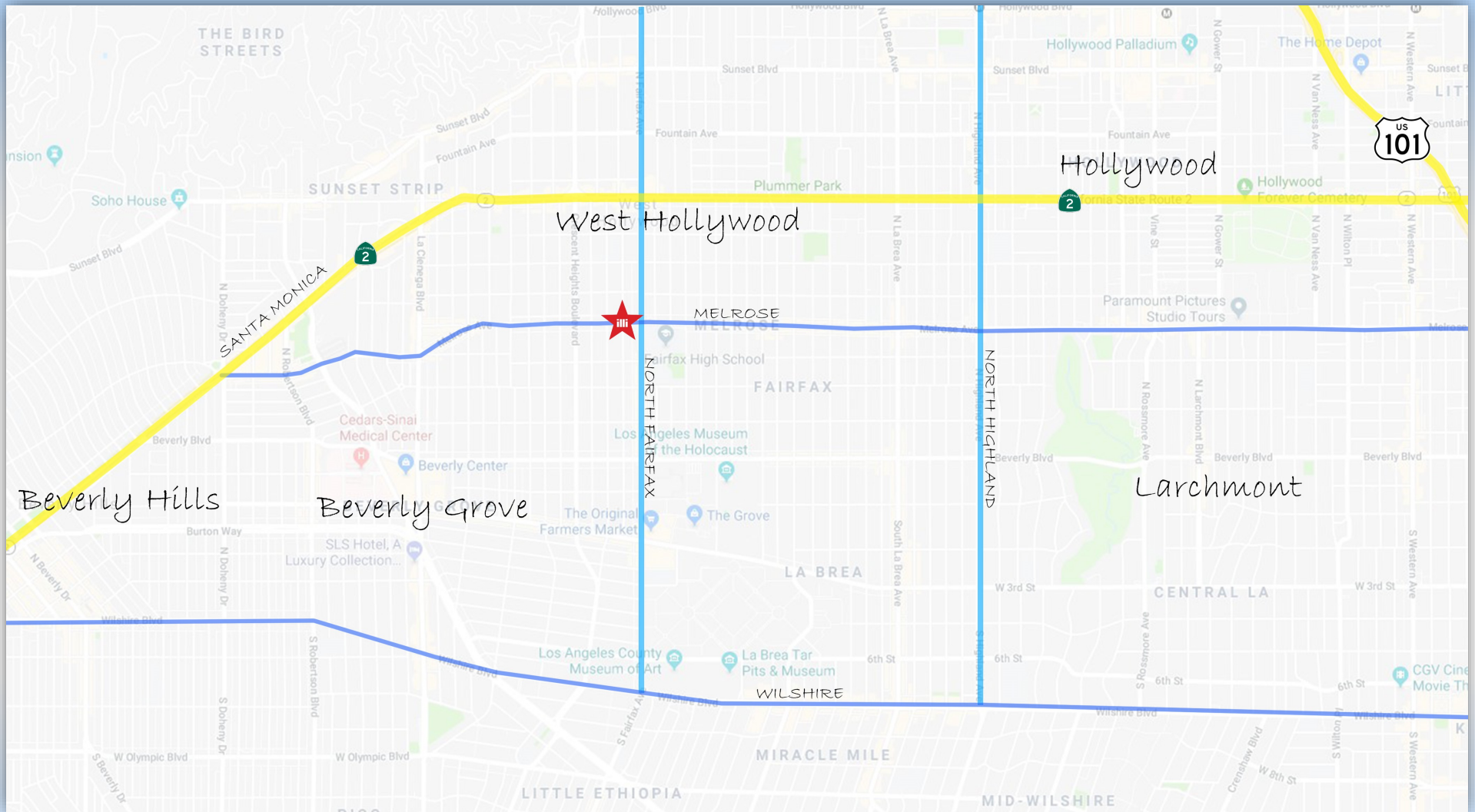


This information has been secured from sources we believe to be reliable, but we make no representations or warranties, expressed or implied, as to the accuracy of the information. References to square footage are approximate. References to neighboring retailers are subject to change, and may not be adjacent to the vacancy being marketed either prior to, during, or after leases are signed. Lessee must verify the information and bears all risk for any inaccuracies.

17547 Ventura Blvd., Ste. 304 · Encino CA 91316 · 818.501.2212/Phone · 818.501.2202/Fax · www.illicre.com · DRE #01834124



# 7912-7918 Melrose Avenue



Todd Nathanson (818) 501-2204, [todd@illicre.com](mailto:todd@illicre.com), DRE# 00932779  
Rachel Adams (818) 697-9375, [rachel@illicre.com](mailto:rachel@illicre.com), DRE# 02052879

Please visit us at:



This information has been secured from sources we believe to be reliable, but we make no representations or warranties, expressed or implied, as to the accuracy of the information. References to square footage are approximate. References to neighboring retailers are subject to change, and may not be adjacent to the vacancy being marketed either prior to, during, or after leases are signed. Lessee must verify the information and bears all risk for any inaccuracies.

17547 Ventura Blvd., Ste. 304 · Encino CA 91316 · 818.501.2212/Phone · 818.501.2202/Fax · [www.illicre.com](http://www.illicre.com) · DRE #01834124

