

125 Maiden Lane

Between Pearl & Water Streets

Deal in the \$20's PSF!!

Area:

Partial 2nd Floor - 10,877 RSF

Rental Rate:

Aggressive

Possession:

Immediate

Term:

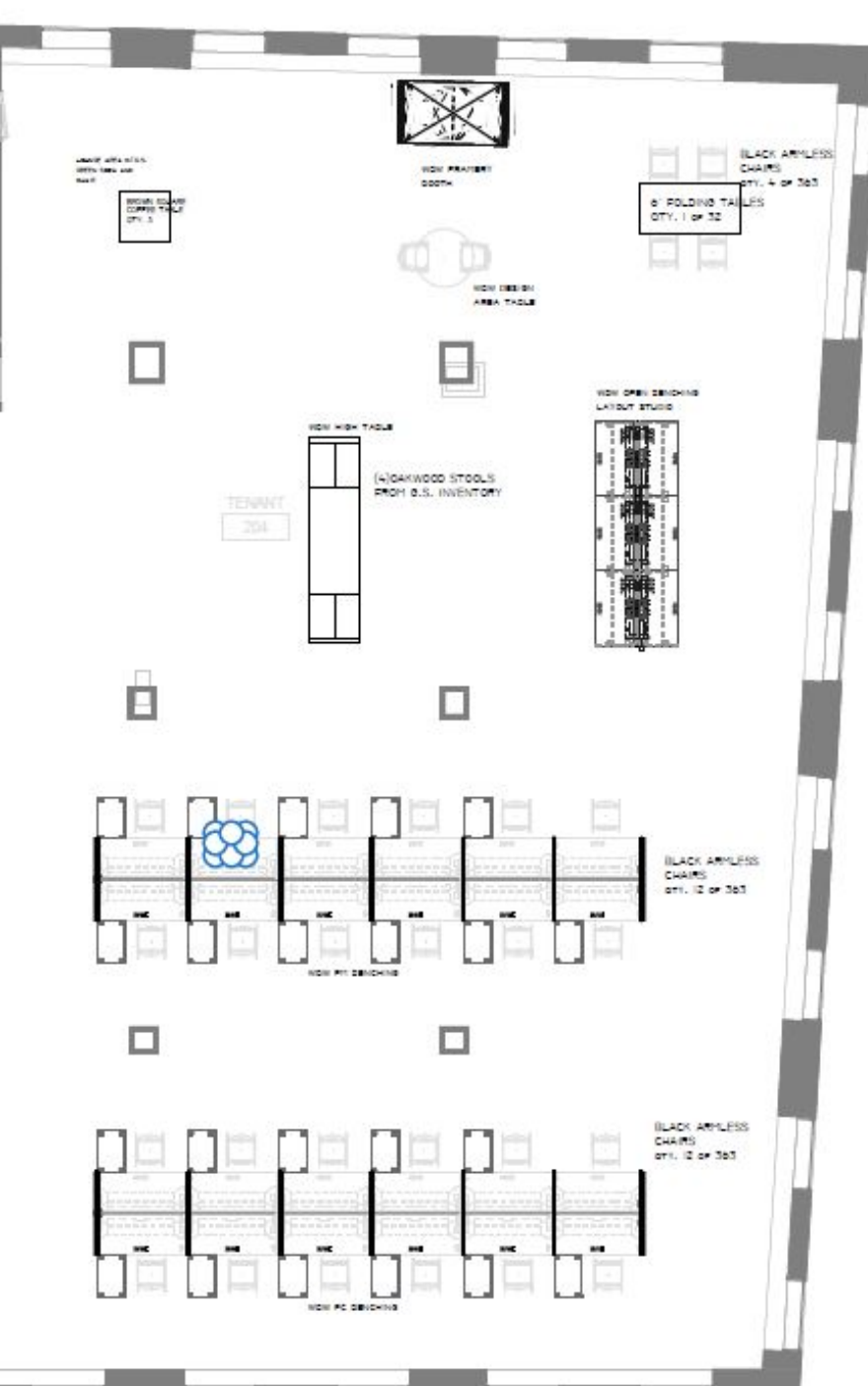
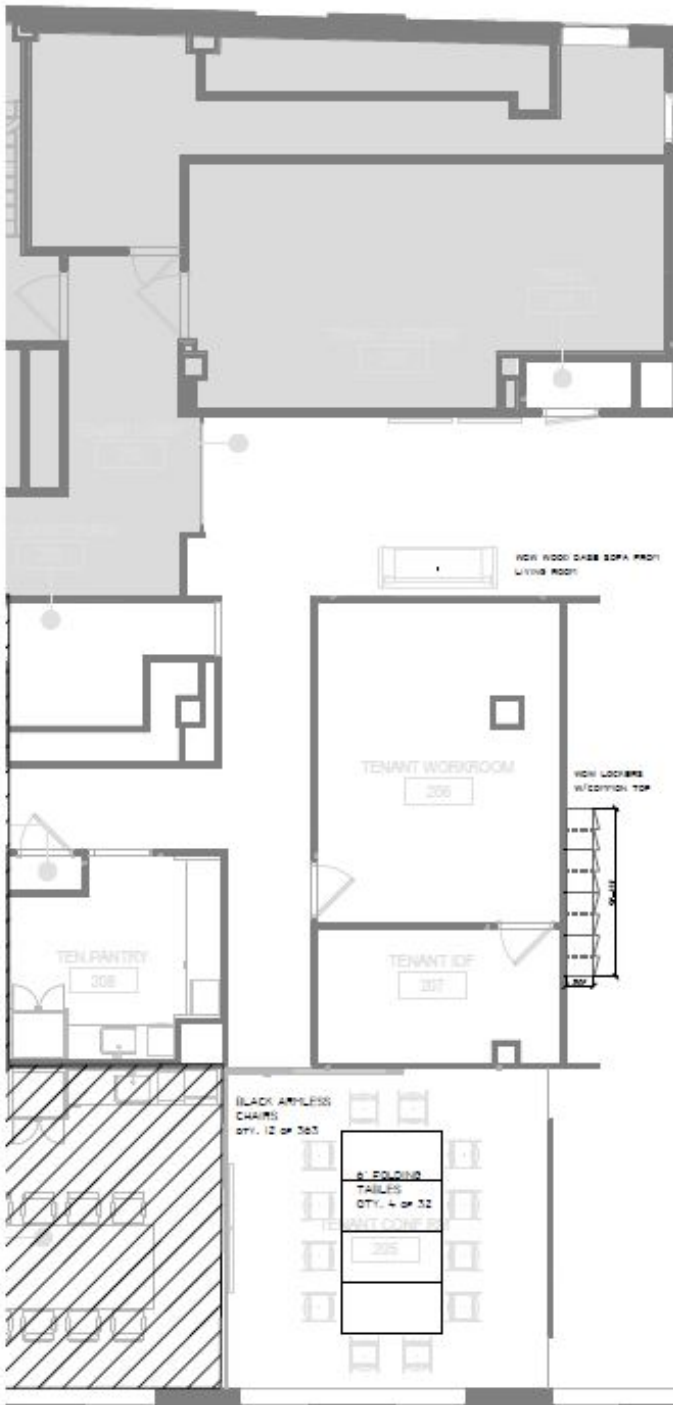
1 - 3 Years

[VIDEO TOUR](#)



Comments:

- Brand new furnished installation
- Built with mostly open area, large eat-in pantry, large conference room with exposed ceilings, reception & IT/Storage room
- Corner unit - 3 sides of windows
- Tenant Exclusive Building Amenities: Exercise Studio, Rooftop Deck, Art Gallery in Lobby
- Touchless features throughout (faucets and lights)
- Strong landlord (office condo)
- Operable windows allowing for maximum air circulation



[DOWNLOAD BROCHURE](#)

For information, please contact:

Andrew Duffy
Associate Director
t 212-233-8142
Andrew.Duffy@nmrk.com

Todd Stracci
Managing Director
t 212-233-8177
Todd.Stracci@nmrk.com

Hal Stein
Vice Chairman
t 212-233-8185
Hal.Stein@nmrk.com

One Liberty Plaza, 29th Floor
New York, NY 10006
t 212-233-8142

nmrk.com



One Liberty Plaza, 29th Floor, New York, NY 10006 t 212-233-8142

The information contained herein has been obtained from sources deemed reliable but has not been verified and no guarantee, warranty or representation, either express or implied, is made with respect to such information. Terms of sale or lease and availability are subject to change or withdrawal without notice.

©2022 Newmark. All Rights Reserved.