

±1.36 Acres

Browningsville Rd | Ijamsville | MD | 21754

vcre.co



Parcel of record, price reflects that it is raw land.
No Perc
No Well
Being Offered As-is



Office: 240.367.9600 | Fax: 240.668.6822 | 1845 Brookfield Ct. | Frederick, MD 21701

Jay Mason

301.524.2160 mobile

Jay@VeritaRealEstate.com

240.367.9600

Browningsville Road

Ijamsville, MD

vcre.co

Presenting

| | |
|------------------------|---|
| Locations: | Browningsville Road Ijamsville, MD 21754 |
| Legal: | Map 0097 Grid 0011 parcel 0108 |
| Zoning: | Agricultural with Residential Use |
| Acreage: | 1.36 Acres |
| Rental or Living Size: | Ready to Perc |
| Property Type: | Raw Land |
| Year Build: | to come |
| Water: | to come |
| Sewer: | to come |
| Price: | \$75,000 |
| Cross Street: | Lawson Road |
| Directions: | Rt 80 to Rt 75 then left on Browningsville |

Disclaimer: Information obtained from sources deemed to be reliable. However, we make no guarantee, warranty or representation. Information, prices, and other data may change without notice.



1845 Brookfield Court
Frederick, MD 21701

Office 240.367.9600
Cell 301.524.2160
VeritaRealEstate.com



Zoning

Frederick, County Zoning—Agricultural (A) Residential (R1)

.....

Possible usage under zoning (permitted and some permitted use subject to site dev. Plan approval) includes, but not limited to:

- Agricultural Activities
- Limited Roadside Stand
- Single Family Detached
- Mobile Homes
- Landscape Contractor
- School Bus Parking
- Recreation Vehicle Storage
- Auction Sales—Animals
- Outdoor Sport Recreation Facility
- Cemetery / Memorial Gardens
- Place of Worship

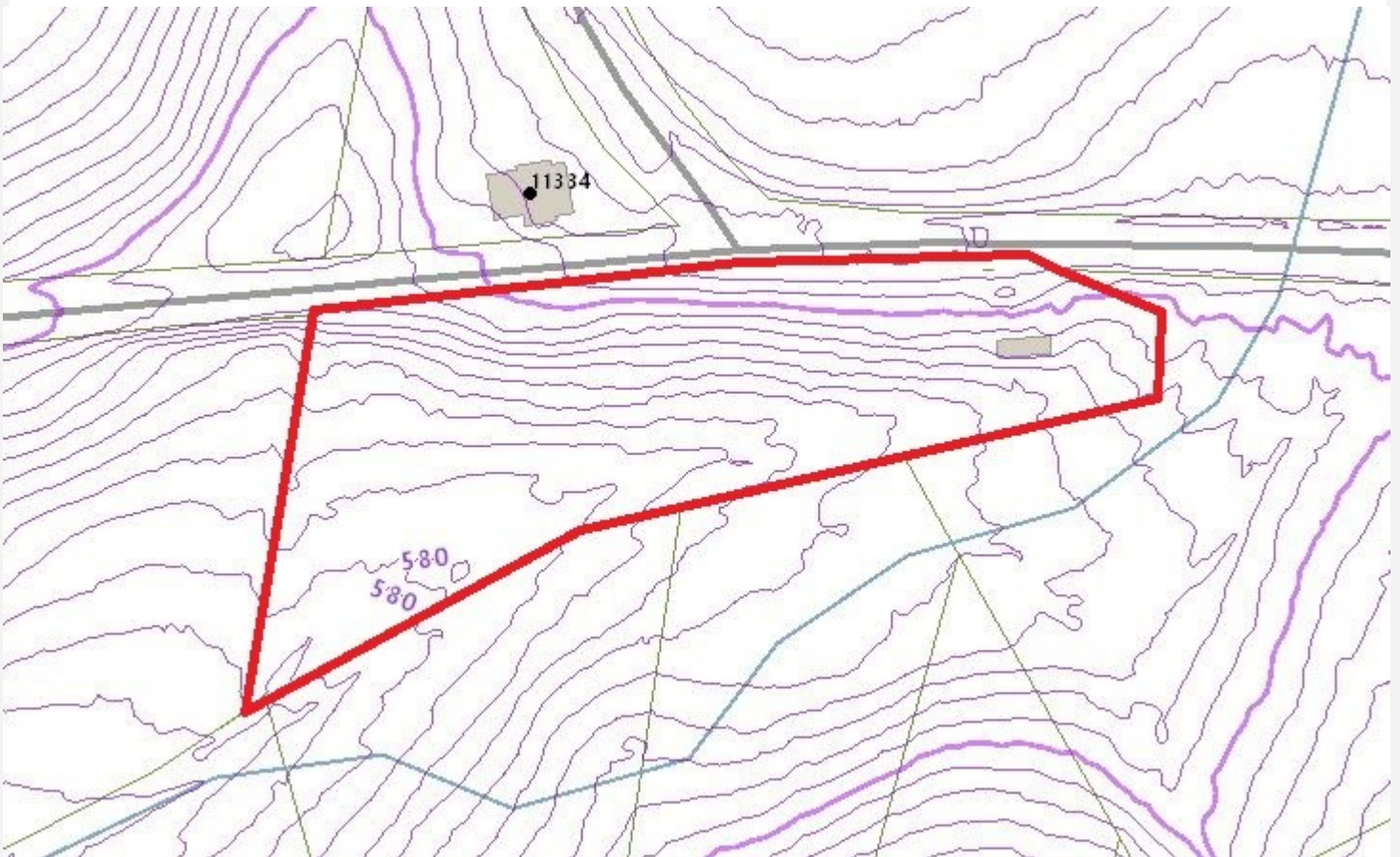
Disclaimer: Information obtained from sources deemed to be reliable. However, we make no guarantee, warranty or representation. Information, prices, and other data may change without notice.

Browningsville Road

Ijamsville, MD

vcre.co

Contours Map



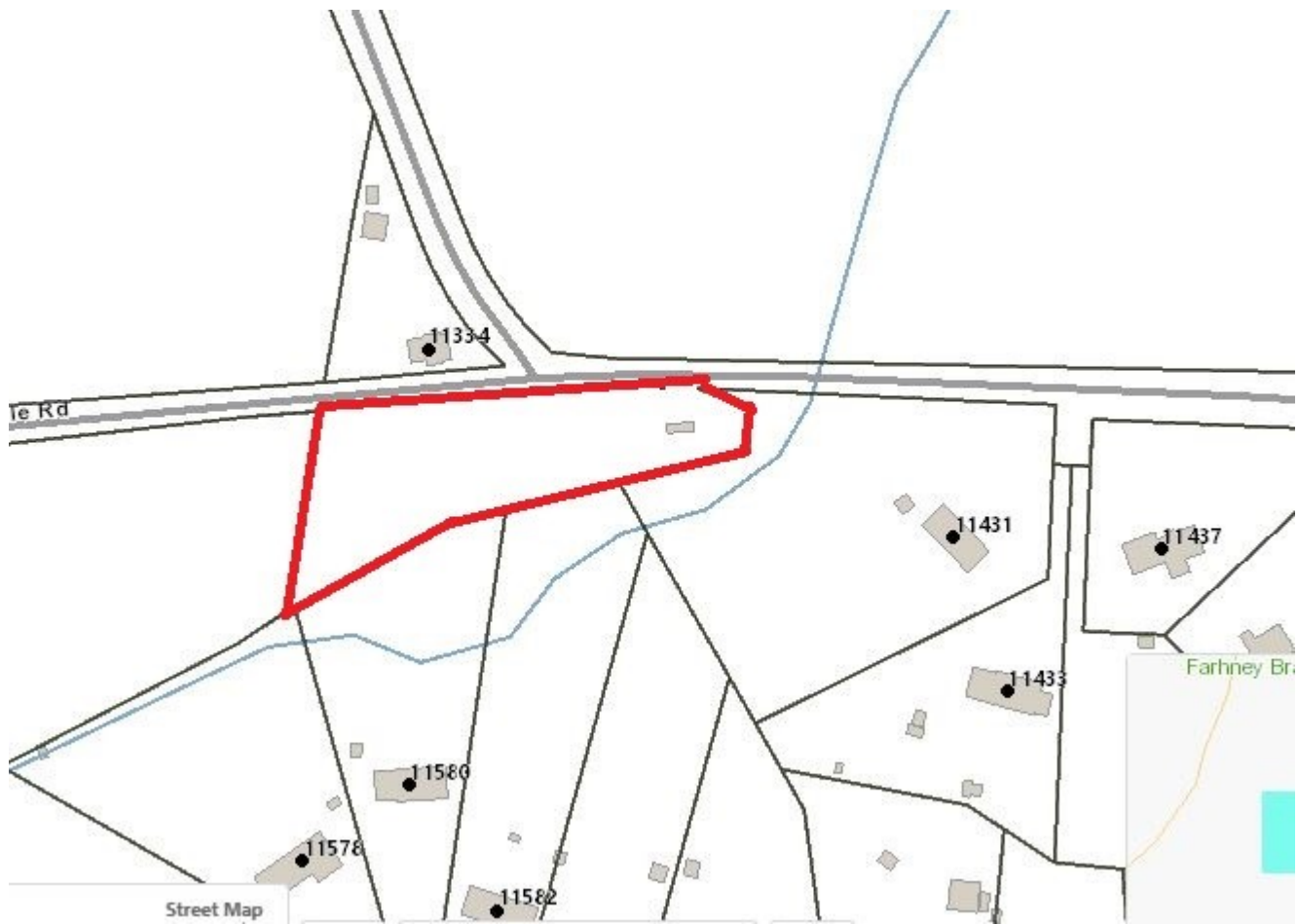
Disclaimer: Information obtained from sources deemed to be reliable. However, we make no guarantee, warranty or representation. Information, prices, and other data may change without notice.

Browningsville Road

Ijamsville, MD

vcre.co

Parcel



Disclaimer: Information obtained from sources deemed to be reliable. However, we make no guarantee, warranty or representation. Information, prices, and other data may change without notice.