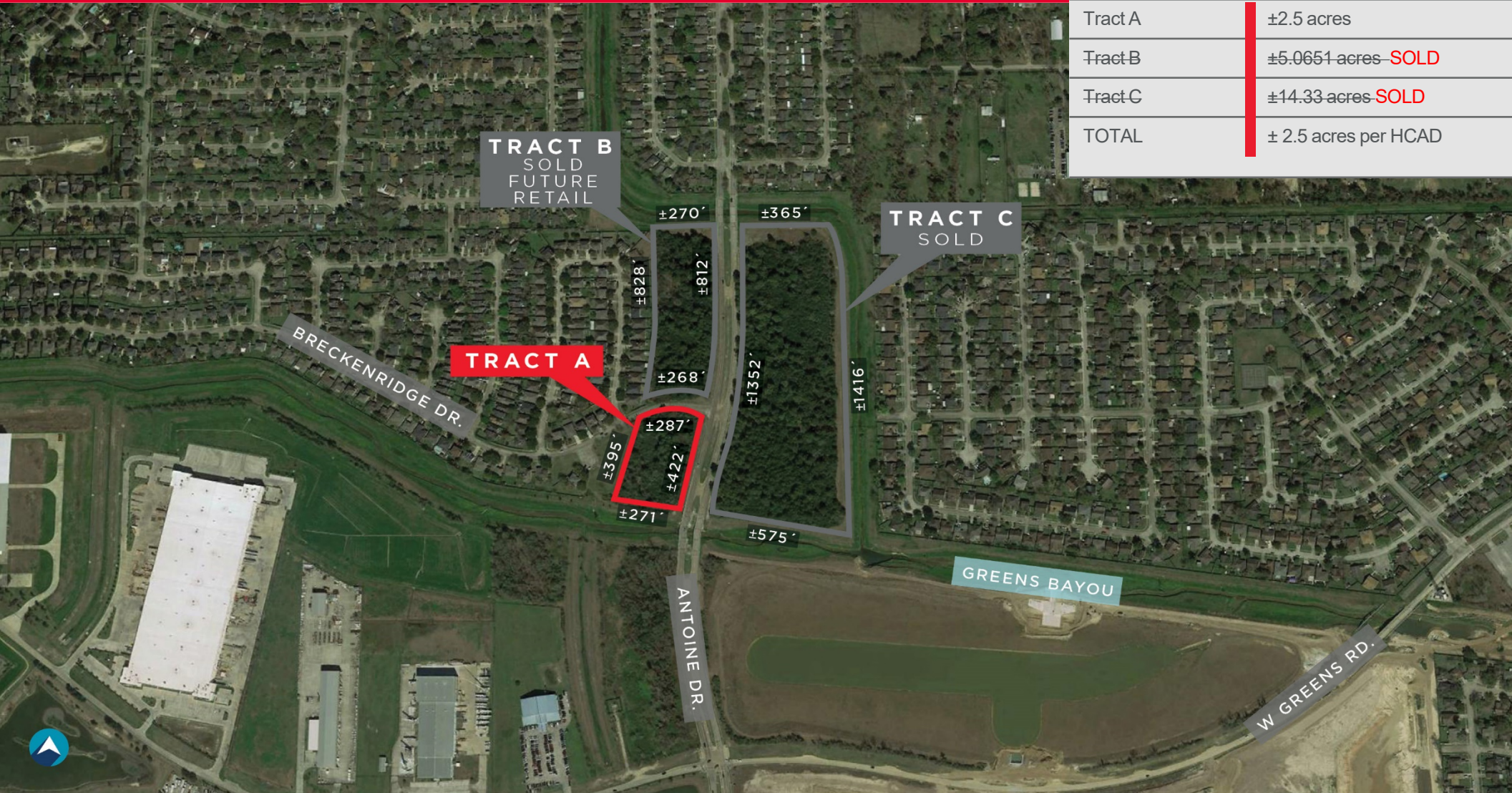




Tract A still available, approximately 2.5 acres Located on the west side of Antoine Drive Houston, Texas 77066



Tract A	±2.5 acres
Tract B	±5.0651 acres SOLD
Tract C	±14.33 acres SOLD
TOTAL	± 2.5 acres per HCAD

For more information, please contact:

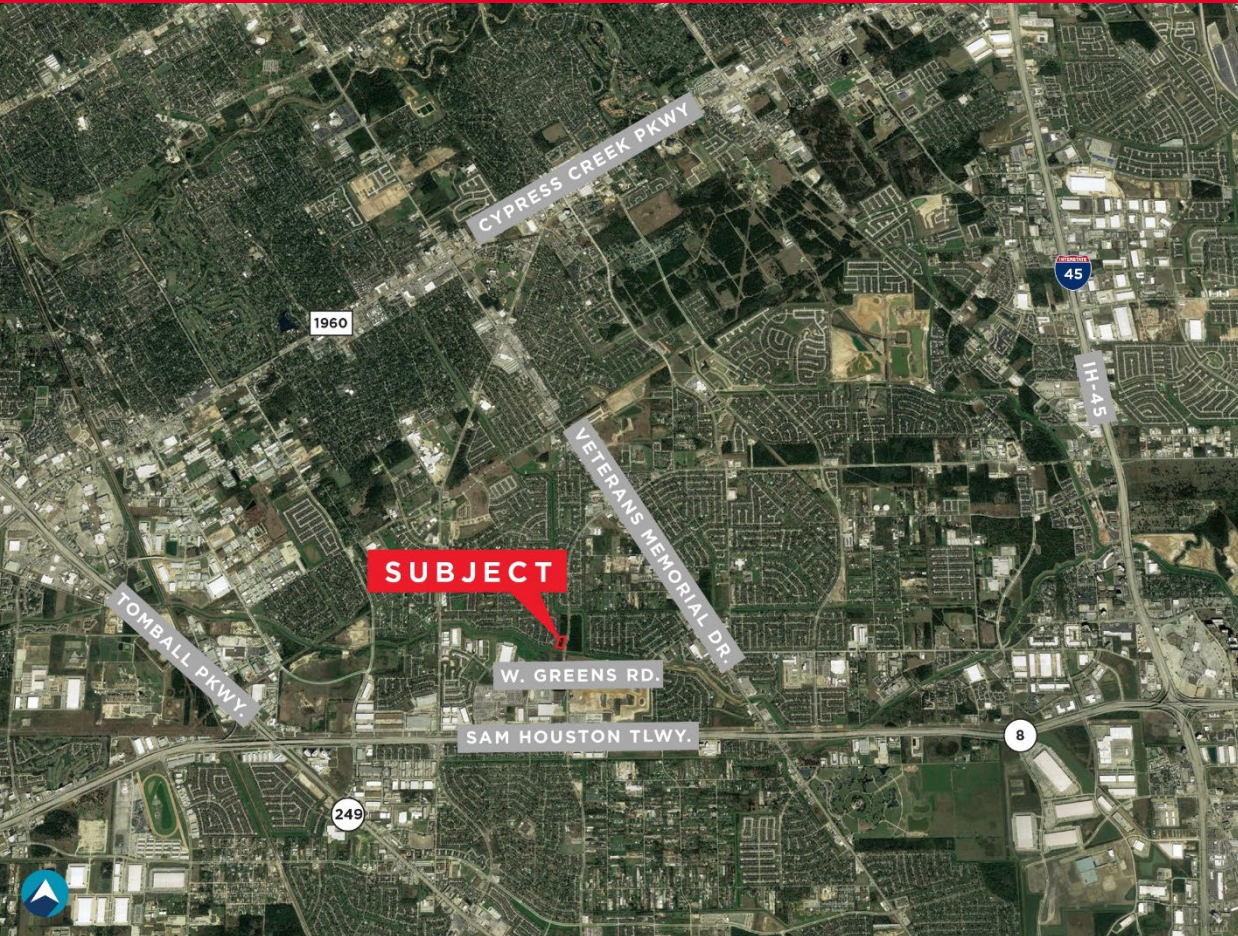
Meredith T. Cullen
+1 713.331.1809
meredith.cullen@cushwake.com

David L. Cook, SIOR, CRE
+1 713.963.2888
david.cook@cushwake.com

1330 Post Oak Blvd., Suite 2700
Houston, Texas 77056
phone: +1 713.877.1700



Tract A still available, approximately 2.5 acres
 Located on the west side of Antoine Drive
 Houston, Texas 77066



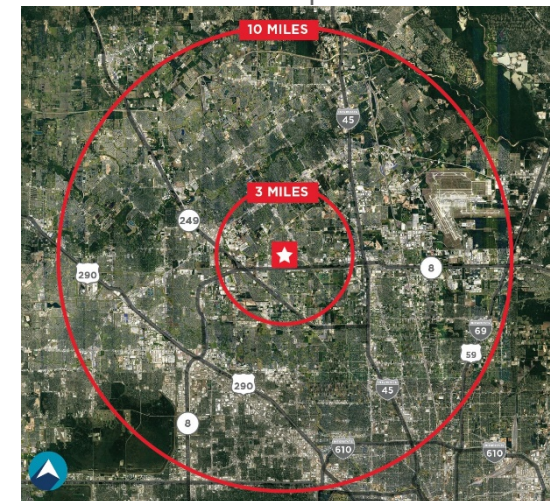
AREA DEMOGRAPHICS

2020 Demographics

	3 Miles	10 Miles
Q1 2020 Employees	42,221	513,041
Q1 2020 Establishments	3,495	45,322
Total Population	124,356	1,135,245
Total Households	36,015	385,540
Average Household Income	\$65,552	\$81,634

2024 Demographics

Total Population	131,632	1,213,003
Total Households	38,157	413,700
Average Household Income	\$72,658	\$90,920



The sites offer good ingress/egress:
 Sam Houston Parkway – approximately ½ mile
 Interstate 45 - approximately 4 miles
 Tomball Parkway (SH 249) - less than 3 miles
 Veterans Memorial - just over a mile

Tax ID #: 0460220001200 & 0460220001300
 Key Map: 371P

For more information, please contact:

Meredith T. Cullen
 +1 713.331.1809
 meredith.cullen@cushwake.com

David L. Cook, SIOR, CRE
 +1 713.963.2888
 david.cook@cushwake.com

1330 Post Oak Blvd., Suite 2700
 Houston, Texas 77056
 phone: +1 713.877.1700