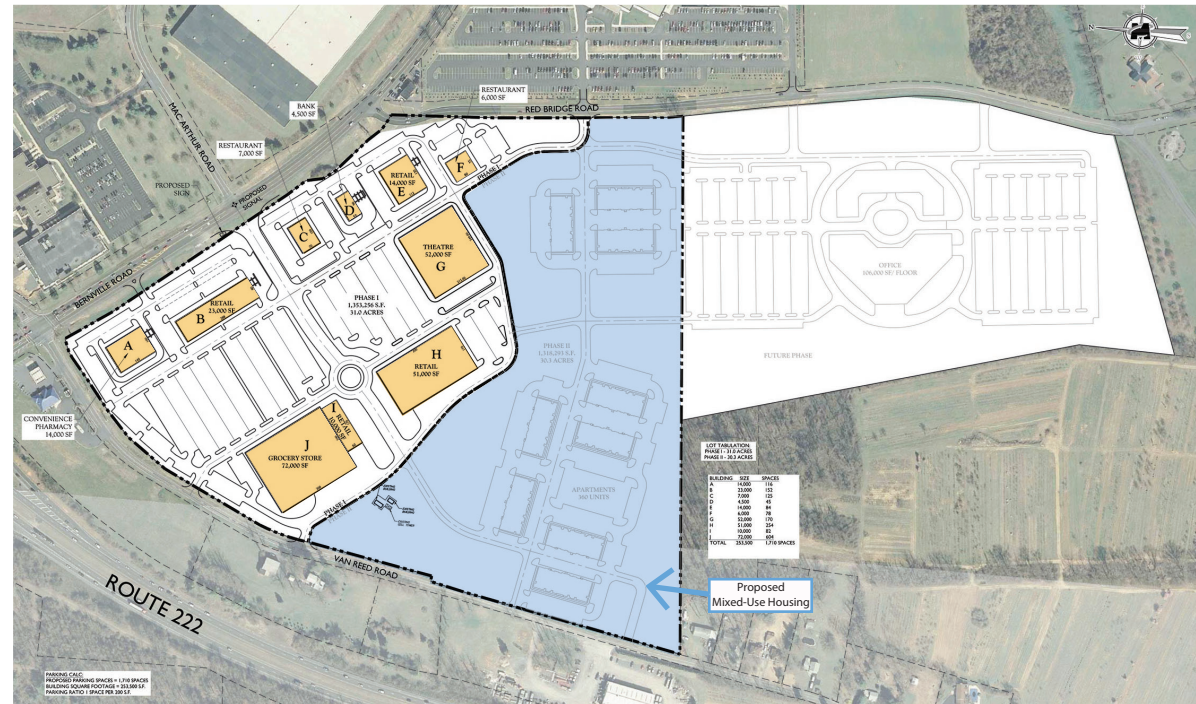


Berks County | Pennsylvania
GATEWAY AT BERN
 Routes 222 & 183 | Bern Township

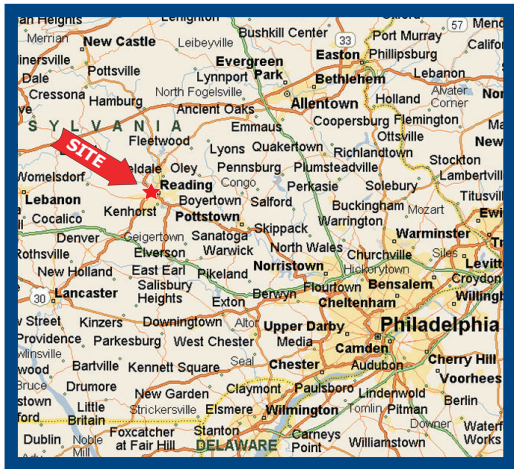
LEGEND PROPERTIES, INC.

Berks County | Pennsylvania **GATEWAY AT BERN** Routes 222 & 183 | Bern Township



PROPERTY HIGHLIGHTS

- New mixed-use development
- Located at the southeast corner of Routes 222 & 183 in Bern Township, Berks County
- 61 acre development including 291,000 SF of retail 72,000 SF supermarket 106,000 SF office space and 250 apartments
- Minutes from Reading Regional Airport, St. Joseph's Medical Center, Industrial Parks and Downtown Reading
- Ideal location for supermarket, restaurants, medical office, and many other retail uses



DEMOGRAPHICS (*)

	1 Mile	3 Miles	5 Miles
Population	600	28,373	164,989
Average HH Income	\$73,819	\$74,247	\$63,193
Total Businesses	521	1,937	129,323
Number of Employees	3,601	35,293	110,427

*Data Source: AGS™

CONTACT:
 James DePetris
 jdepetris@lpre.com
 610-941-4034 Ext. 108



T: 610-941-4034 | F: 610-941-4038 | LPRE.COM
 580 W. Germantown Pike • Suite 103 • Plymouth Meeting, PA 19462



CONTACT:
 James DePetris
 jdepetris@lpre.com
 610-941-4034 Ext. 108

LEGEND PROPERTIES INC.
 COMMERCIAL REAL ESTATE

