

680 | FIFTH  
AVENUE

*PREMIER  
FIFTH  
AVENUE  
RETAIL  
OPPORTUNITY*

---

*FIFTH AVENUE AND  
WEST 54TH STREET*

---

 CUSHMAN &  
WAKEFIELD





Space Specs

<i>Ground Floor</i>	<b>7,600 SF</b>
<i>Lower Level</i>	<b>5,600 SF</b>
<i>2nd Floor</i>	<b>10,100 SF</b>
<i>3rd Floor</i>	<b>10,500 SF</b>
<hr/>	
<i>Total</i>	<b>33,800 SF</b>

Comments

Triple-height signage opportunity.

Located on the southwest corner of West 54th Street, surrounded by St. Thomas Church and the University Club—standing out on a downtown corner in the heart of the world’s best shopping street.

Multiple configurations available.

Jewel-box opportunity farthest south also available.

Existing vertical transportation including escalator in place.



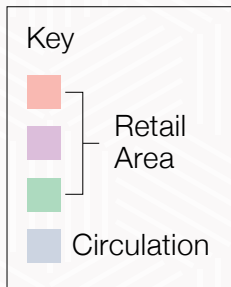
Space Specs

<i>Lease Type</i>	<b>DIRECT</b>
<i>Possession</i>	<b>3/1/19</b>
<i>Frontage</i>	<b>100 FT</b> ON W. 54TH ST;
	<b>87 FT</b> ON FIFTH AVENUE



# 680 | FIFTH AVENUE

## Floorplans



### GROUND FLOOR

SPACE 1: 6,700 SF  
SPACE 2: 900 SF



### GROUND FLOOR

#### POSSIBLE DIVISIONS

SPACE 1: 4,300 SF  
SPACE 2: 2,400 SF  
SPACE 3: 900 SF



# 680 | FIFTH AVENUE

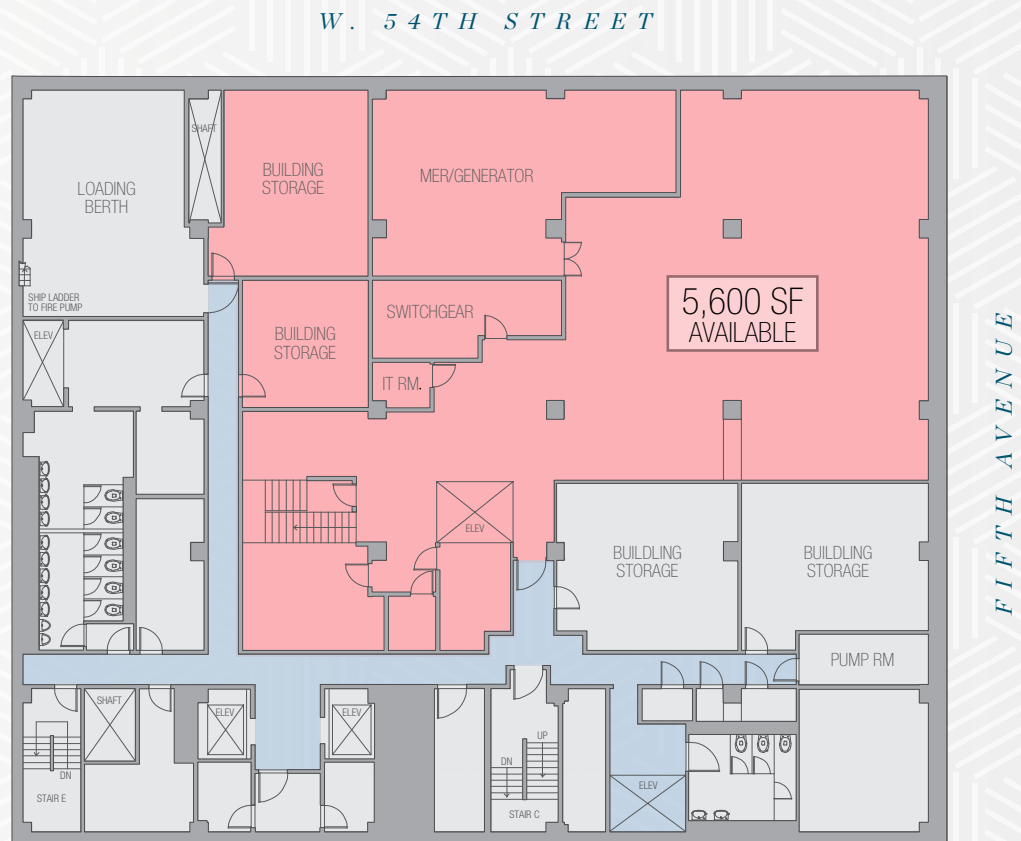
## Floorplans

Key

- Retail Area
- Circulation

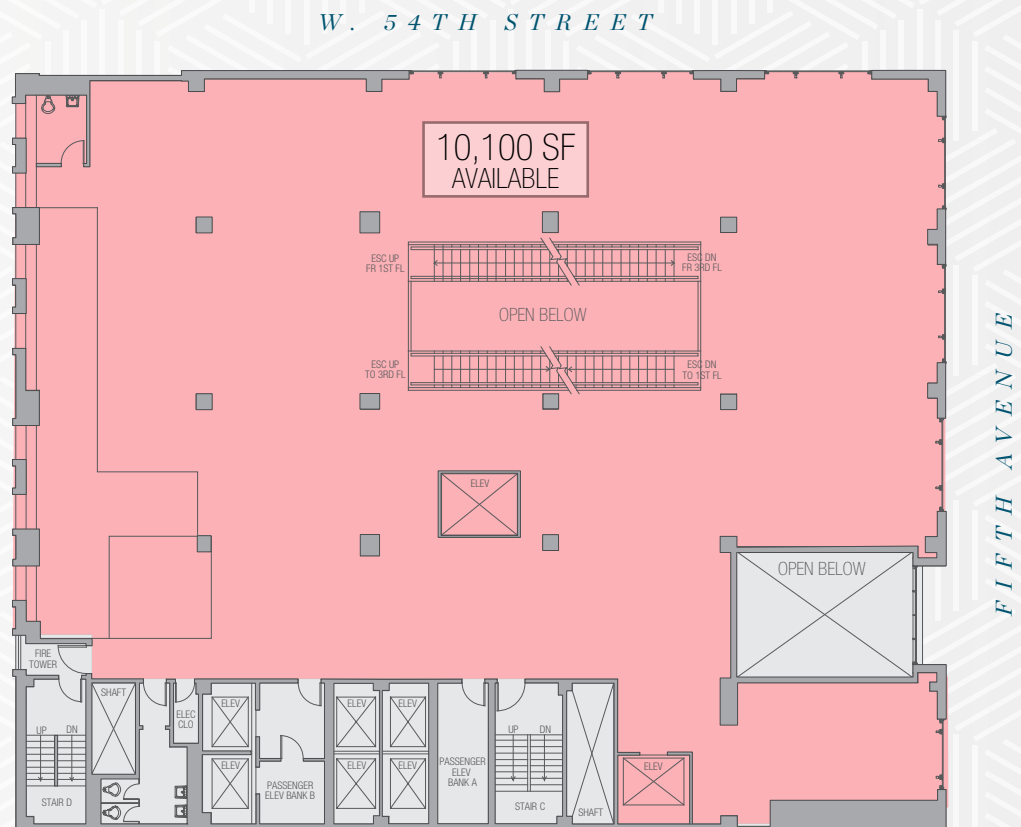
### LOWER LEVEL

5,600 SF



### SECOND FLOOR

10,100 SF



# 680 | FIFTH AVENUE

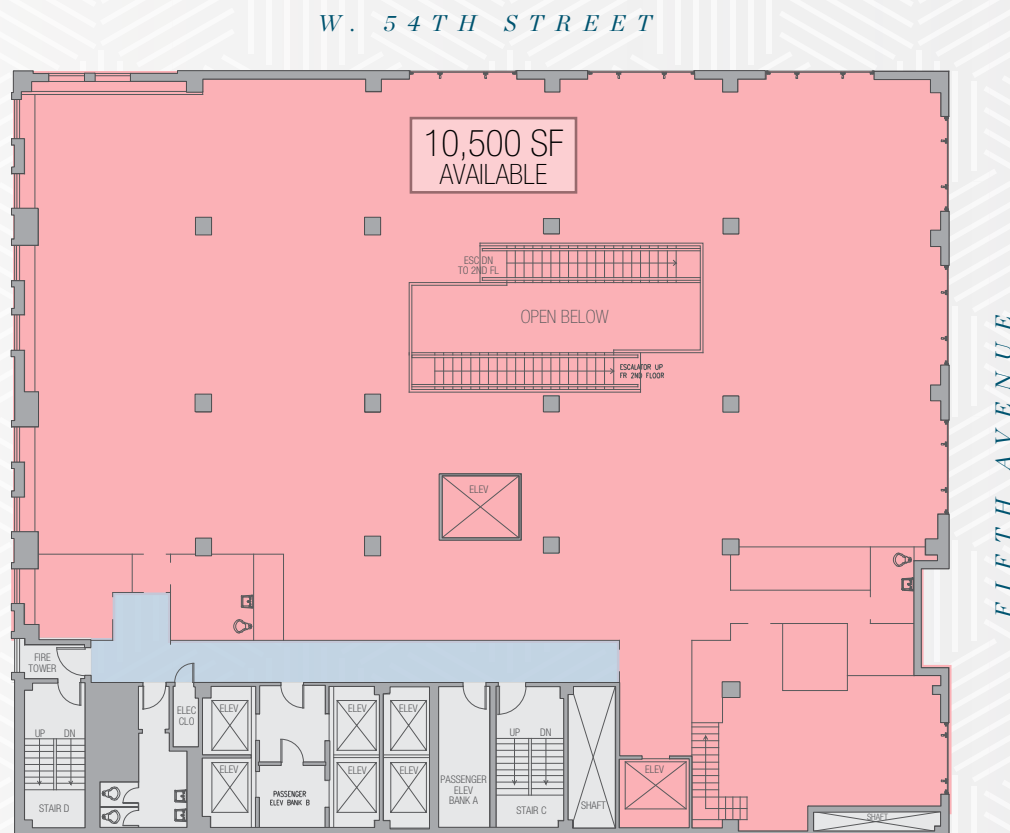
## Floorplans

Key

- Retail Area
- Circulation

### THIRD FLOOR

10,500 SF





# 680 | FIFTH AVENUE

## Area Map

### NEIGHBORING RETAILERS INCLUDE:

**APPLE**

**BERGDORF  
GOODMAN**

**BULGARI**

**PRADA**

**LOUIS VUITTON**

**TIFFANY & CO.**

**MOMA**

**ERMENEGILDO  
ZEGNA**

**CARTIER**

**UNIQLO**

**STUART  
WEITZMAN**

**ROLEX**

**VALENTINO**

**TISSOT**

**LINDT**

**NIKE**

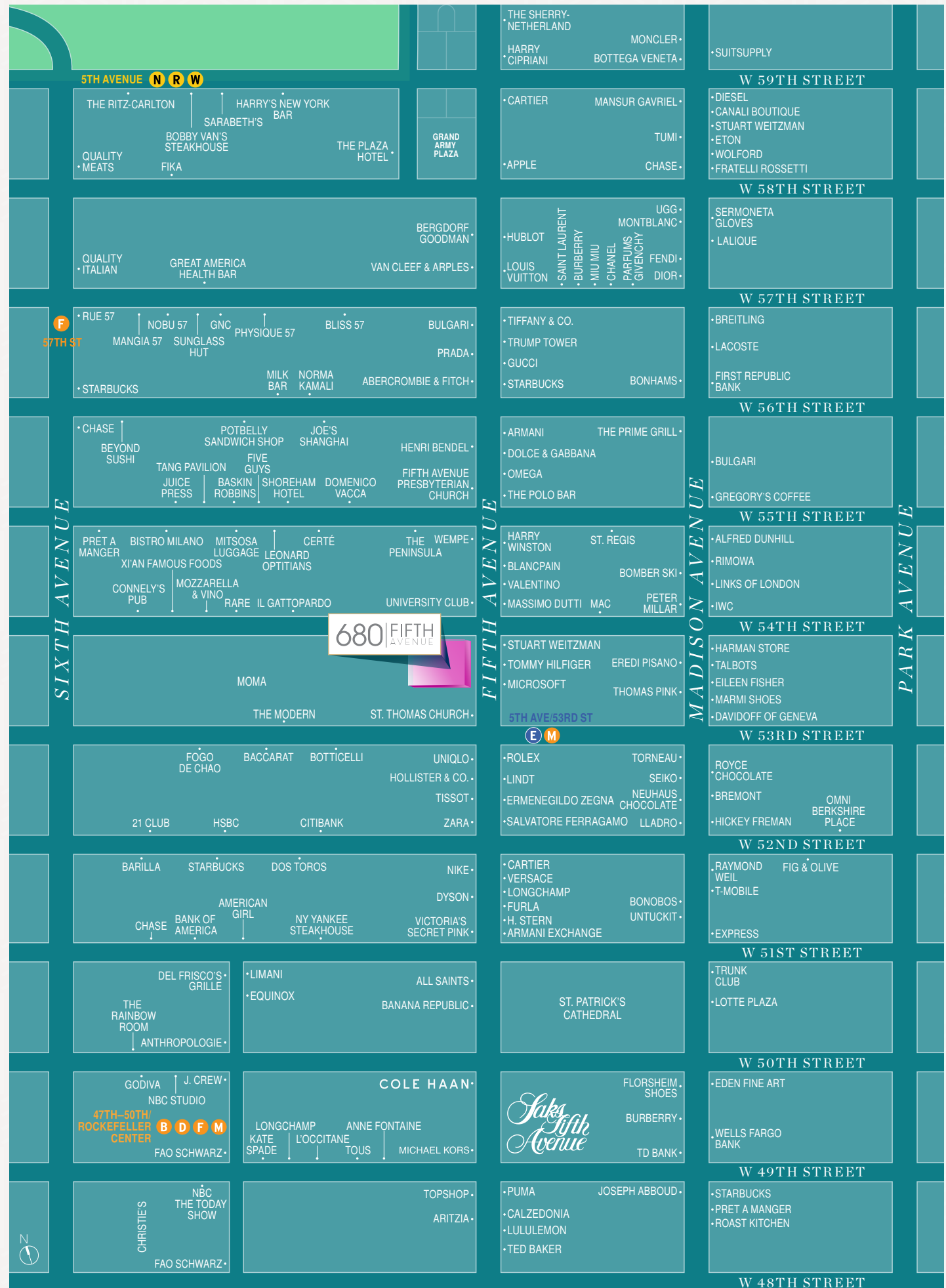
**CARTIER**

**VERSACE**

**LONGCHAMP**

**H. STERN**

**ARMANI EXCHANGE**





# 680 | FIFTH AVENUE

*Please contact us with retail leasing inquiries:*

## **LAURA POMERANTZ**

*Vice Chairman / Head of Strategic Accounts*

+1 212 841 7501

[laura.pomerantz@cushwake.com](mailto:laura.pomerantz@cushwake.com)

## **STEVEN SOUTENDIJK**

*Executive Managing Director*

+1 212 713 6845

[steven.soutendijk@cushwake.com](mailto:steven.soutendijk@cushwake.com)

## **SEAN MORAN**

*Director*

+1 212 841 7668

[sean.moran@cushwake.com](mailto:sean.moran@cushwake.com)

## **MOLLY SANDZA**

*Senior Associate*

+1 212 841 7955

[molly.sandza@cushwake.com](mailto:molly.sandza@cushwake.com)

