

# POLO PLAZA

3702 & 3790 VIA DE LA VALLE,  
DEL MAR, CA 92014



Building Top Signage • Up to 11,406 SF On Top Floor • Near Rancho Santa Fe

STEVE BRUCE  
858 334 4052  
steve.bruce@cushwake.com  
Lic. #1455744

CHRIS HIGH  
858 334 4020  
chris.high@cushwake.com  
Lic. #1734544

CONOR EVANS  
858 334 4049  
conor.evans@cushwake.com  
Lic. #01963596

CUSHMAN & WAKEFIELD OF  
SAN DIEGO, INC.  
4747 Executive Drive, 9th Floor  
San Diego, CA 92121  
Lic. #1329963



# FLOOR PLAN



BUILDING	SUITE	SIZE	RENTAL RATE	TIMING	COMMENTS
3790	211	approx. 897 SF	\$3.00/SF NNN	Immediate	<ul style="list-style-type: none"> <li>• Office or retail</li> </ul>
3790	300	approx. 5,470 SF	\$3.00/SF + U & J	Immediate	<ul style="list-style-type: none"> <li>• Building top signage available</li> <li>• Underground parking</li> <li>• Private restrooms &amp; showers</li> <li>• Secured key card entry</li> </ul>



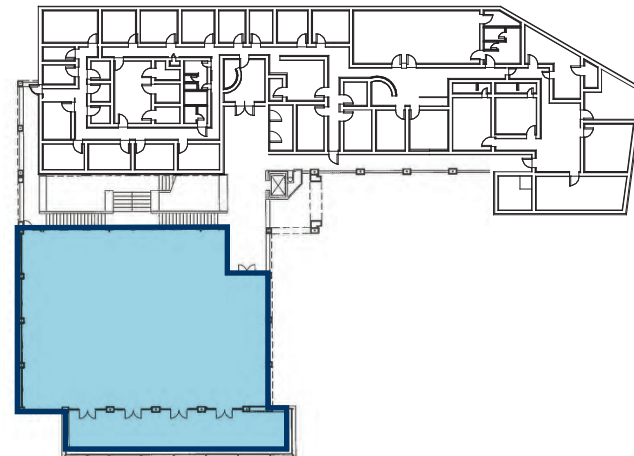
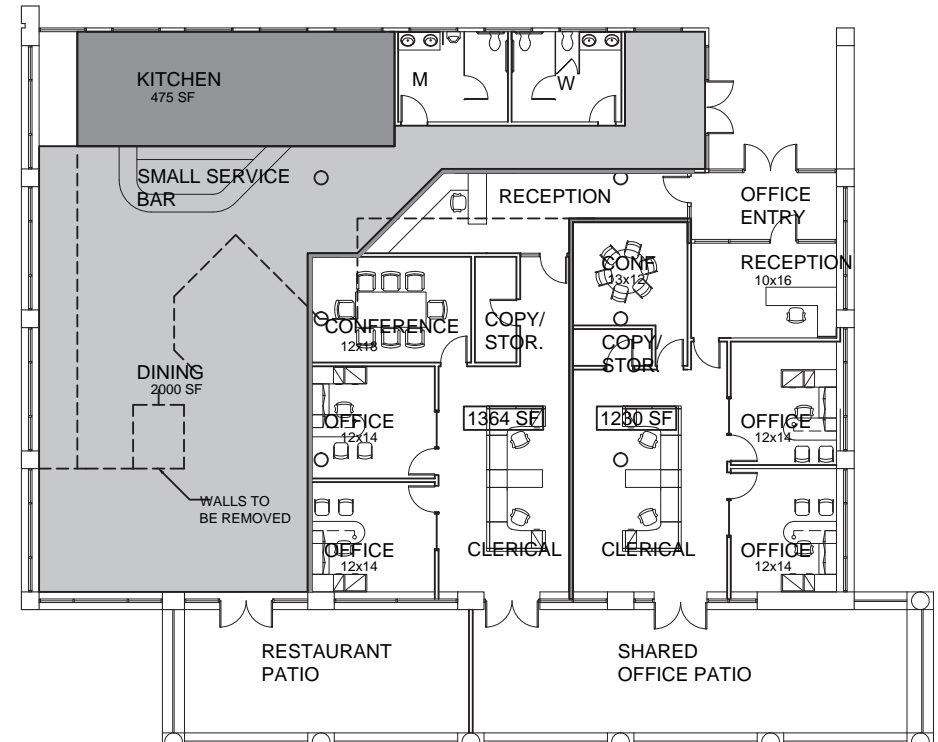


## PROPERTY DETAILS

- Building top signage available
- Onsite restaurants and retail
- Across from the polo fields
- Zoning permits surgery center use
- Ample surface and covered parking available
- Close proximity to the I-5 and Rancho Santa Fe

## RESTAURANT AND OFFICE CONCEPTUAL PLAN

2,594 SF Divisible to 1,364 SF and 1,230 SF Options





1. DEL MAR FAIRGROUNDS
2. PAMPLEMOUSSE
3. THE FISH MARKET

4. TABU SUSHI BAR & GRILL
5. MILTONS
6. FLOWER HILL MALL

7. WHOLE FOODS
8. RANCHO SANTA FE GOLF COURSE

9. MARKET RESTAURANT + BAR
10. POLO FIELDS

# CONTACT

STEVE BRUCE  
858 334 4052  
steve.bruce@cushwake.com  
Lic. #1455744

CHRIS HIGH  
858 334 4020  
chris.high@cushwake.com  
Lic. #1734544

CONOR EVANS  
858 334 4049  
conor.evans@cushwake.com  
Lic. #01963596

No warranty or representation, expressed or implied, is made as to the accuracy of the information contained herein, and same is submitted subject to errors omissions, change of price, rental or other conditions, withdrawal without notice, and to any specific listing conditions, imposed by our principals.

The depiction in the included photograph of any person, entity, sign, logo or property, other than Cushman & Wakefield's (C&W) client and the property offered by C&W, is incidental only, and is not intended to connote any affiliation, connection, association, sponsorship or approval by or between that which is incidentally depicted and C&W or its client.

Cushman & Wakefield of San Diego, Inc.  
4747 Executive Drive, 9th Floor  
San Diego, CA 92121  
Lic. #1329963

