

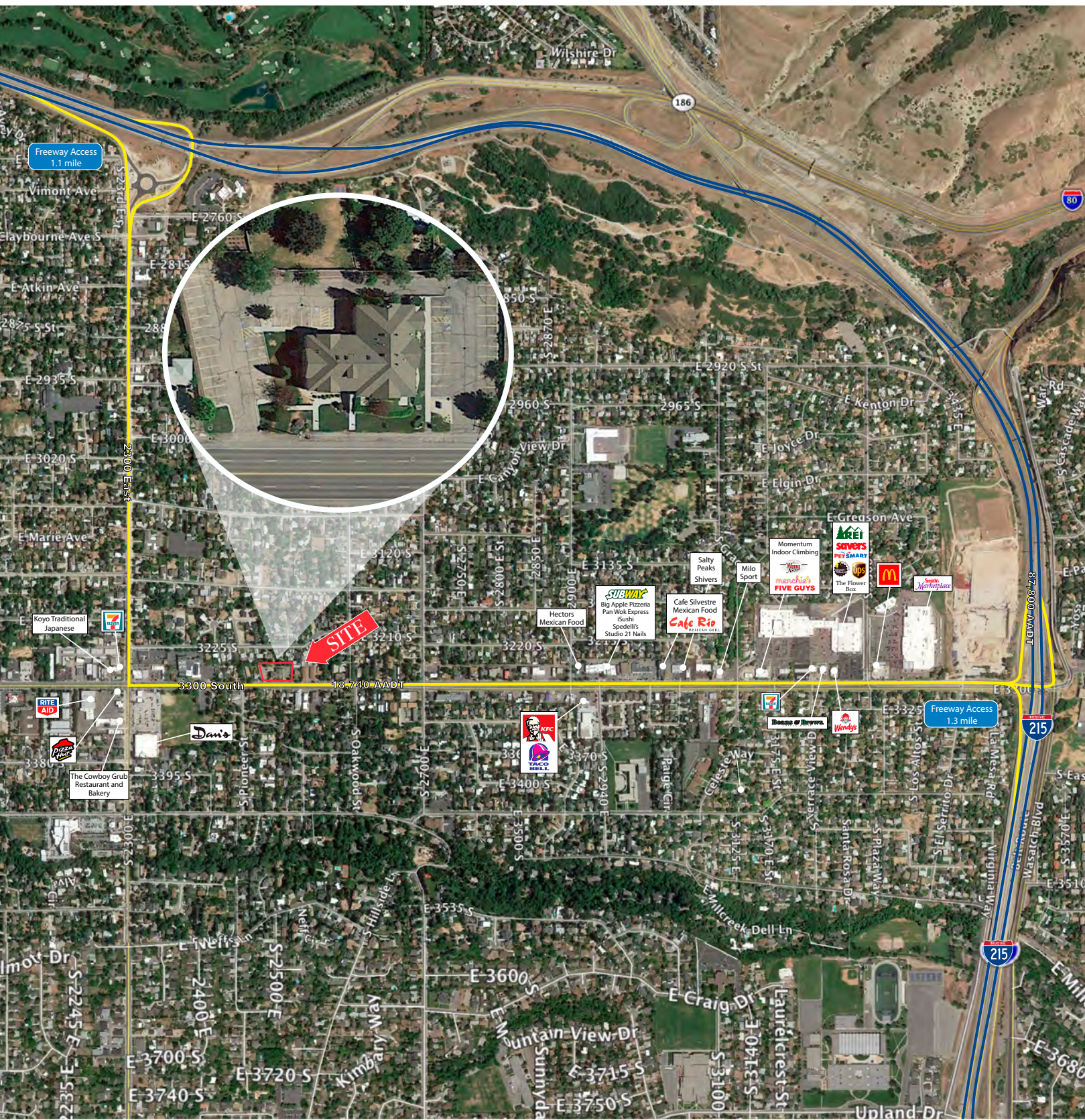
2505 East 3300 South, Salt Lake City, UT 84109

OFFICE
FOR LEASE

Millcreek Office

2505 East 3300 South
Salt Lake City, UT 84109

OFFICE
FOR LEASE



PROPERTY INFORMATION

- \$17.50/SF Full Service
- Suite 301 - 936 RSF Available
- Suite 300 - 228 RSF Available
- Suite 302 - 1,518 RSF Available
- Open floor plan
- Elevator
- ADA Compliant
- Ample parking
- Many nearby restaurants, retail and amenities
- Easy access to I-80 and I-215

DEMOGRAPHICS

POPULATION

	1 MILE	3 MILE	5 MILE
2020 EST	15,677	111,660	243,058
2025 PROJ	16,841	119,904	260,107

HOUSEHOLDS

	1 MILE	3 MILE	5 MILE
2020 EST	5,854	45,427	102,156
2025 PROJ	6,294	48,756	109,470

INCOME

	1 MILE	3 MILE	5 MILE
2020 AVG	\$124,913	\$125,011	\$106,493
2020 MED	\$89,208	\$87,977	\$75,038

Source: Sites USA 2020



7455 Union Park Avenue Ste. A, Midvale, Utah 84047
801 255 3333 | naipremier.com



COMMERCIAL REAL ESTATE SERVICES, WORLDWIDE
7455 Union Park Avenue Ste. A,
Midvale, Utah 84047

801 255 3333 | naipremier.com

Jim McLachlan

d 801 619 2707
c 801 750 7991

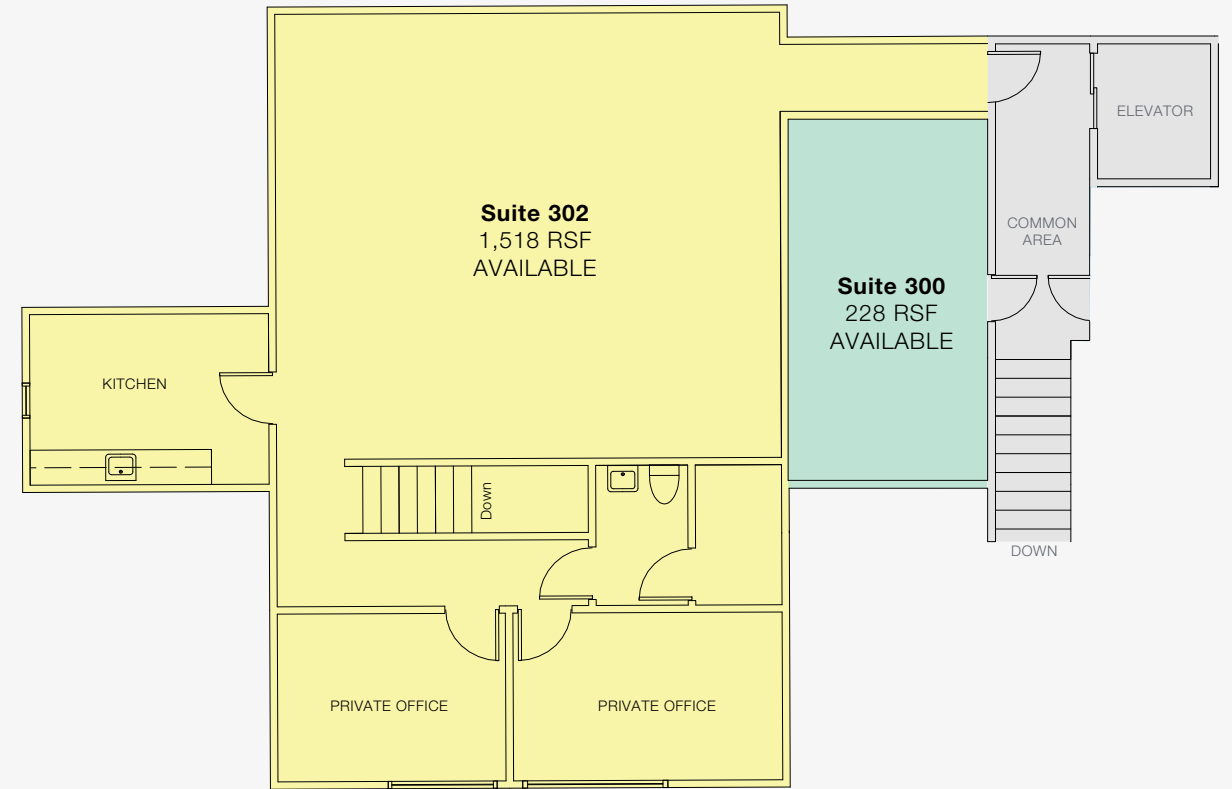
jim@naipremier.com

NO WARRANTY OR REPRESENTATION, EXPRESS OR IMPLIED, IS MADE AS TO THE ACCURACY OF THE INFORMATION CONTAINED HEREIN, AND THE SAME IS SUBMITTED SUBJECT TO ERRORS, OMISSIONS, CHANGE OF PRICE, RENTAL OR OTHER CONDITIONS, PRIOR SALE, LEASE OR FINANCING, OR WITHDRAWAL WITHOUT NOTICE, AND OF ANY SPECIAL LISTING CONDITIONS IMPOSED BY OUR PRINCIPALS NO WARRANTIES OR REPRESENTATIONS ARE MADE AS TO THE CONDITION OF THE PROPERTY OR ANY HAZARDS CONTAINED THEREIN ARE ANY TO BE IMPLIED.

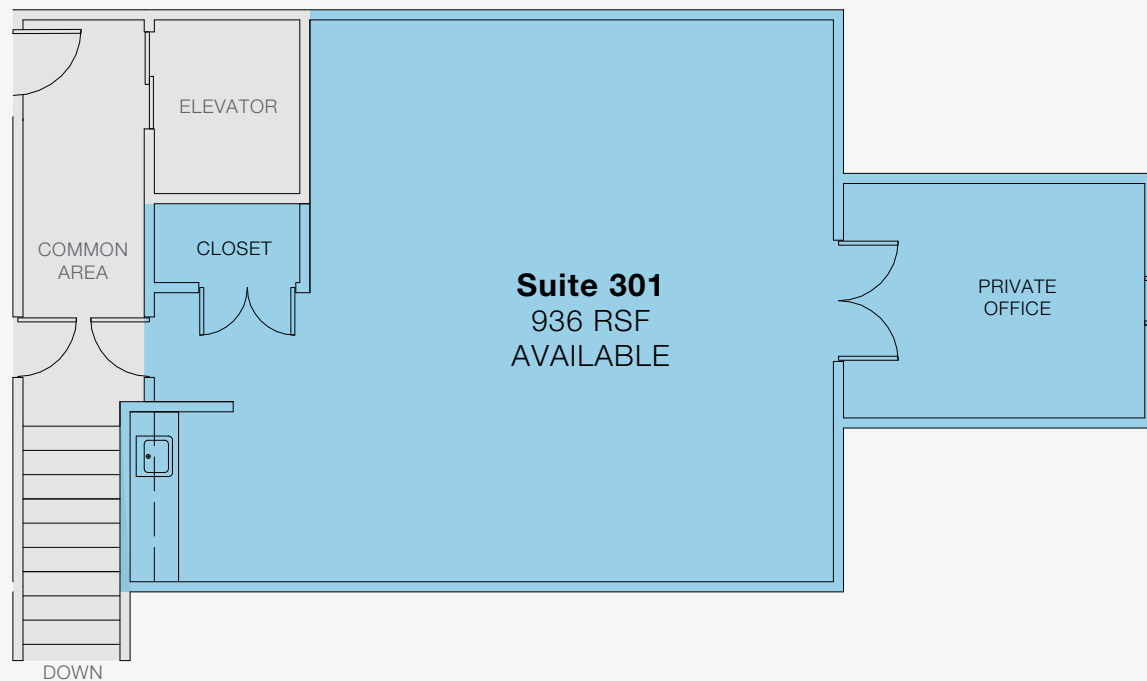
Suite 301 - 936 RSF



Common Area



Suite 300 - 228 RSF



Suite 302 - 1,518 RSF

