

TWO BUILDINGS & LAND FOR SALE

110 Augusta Arbor Way,
Greenville, SC 29605



Prime location in Donaldson Center area in Greenville, SC

- Two buildings totaling +/-15,300 sf on +/- 2.4 acres
- Front building: +/- 10,500 sf (150'x70') with 3 units (A, B, C) separated by fire walls, all walls can be removed for wide open space. Unit A: +/- 1,450 sf. Unit B: +/- 5,550. Unit C: +/- 3,500 sf, building fully heated & cooled
- Back building: +/- 4,800 sf (120'x40') with 6 bays (40'x20' each), 3 middle bays are combined, all bays have their own roll up doors for access, and front bay has 2 loading docks
- Greenville County Tax Map #0400010104600; Zoning: I-1
- **Sales Price: \$799,000.00**

CONTACT

Evan Hines Wilkins - 864.616.4900
evanhines@spencerhines.com

Bobby Hines - 864.313.4815
bobbyhines@spencerhines.com

WWW.SPENCERHINES.COM

COMMERCIAL REAL ESTATE SALES, LEASING, & INVESTMENTS

No warranty or representation, expressed or implied, is made to the accuracy of the information contained herein, and the same is submitted subject to errors, omissions, change of price, rental or other conditions, imposed by the principles.



Aerial Image



back building loading dock



back building side view



front building side view

CONTACT

Bobby Hines - 864.313.4815
bobbyhines@spencerhines.com

Evan Hines Wilkins - 864.616.4900
evanhines@spencerhines.com

WWW.SPENCERHINES.COM

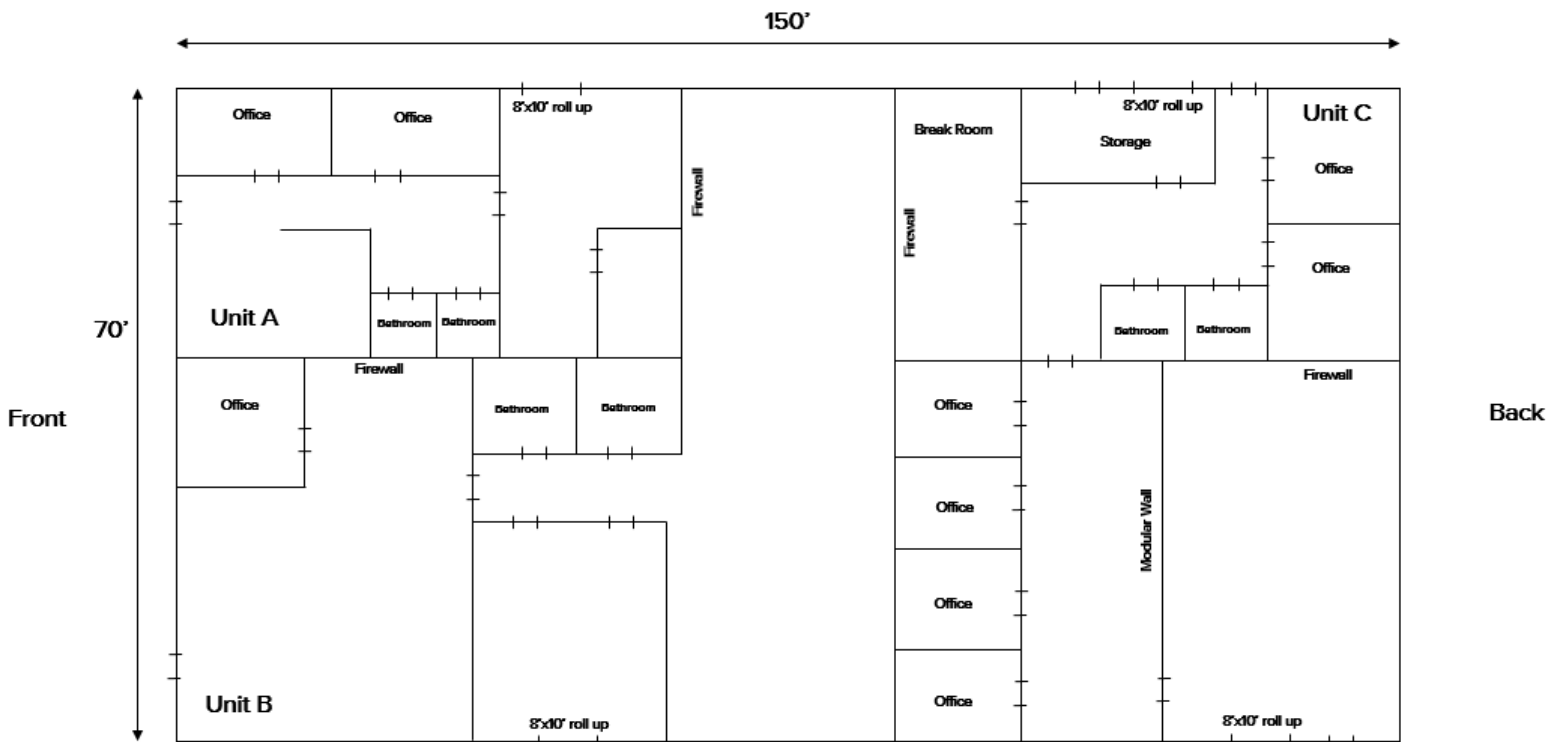
COMMERCIAL REAL ESTATE SALES, LEASING, & INVESTMENTS

No warranty or representation, expressed or implied, is made to the accuracy of the information contained herein, and the same is submitted subject to errors, omissions, change of price, rental or other conditions, imposed by the principles.

Floor Plan

Front Building

(for reference only – not exact dimensions)



CONTACT

Bobby Hines - 864.313.4815
bobbyhines@spencerhines.com

Evan Hines Wilkins - 864.616.4900
evanhines@spencerhines.com

WWW.SPENCERHINES.COM

COMMERCIAL REAL ESTATE SALES, LEASING, & INVESTMENTS

No warranty or representation, expressed or implied, is made to the accuracy of the information contained herein, and the same is submitted subject to errors, omissions, change of price, rental or other conditions, imposed by the principles.