

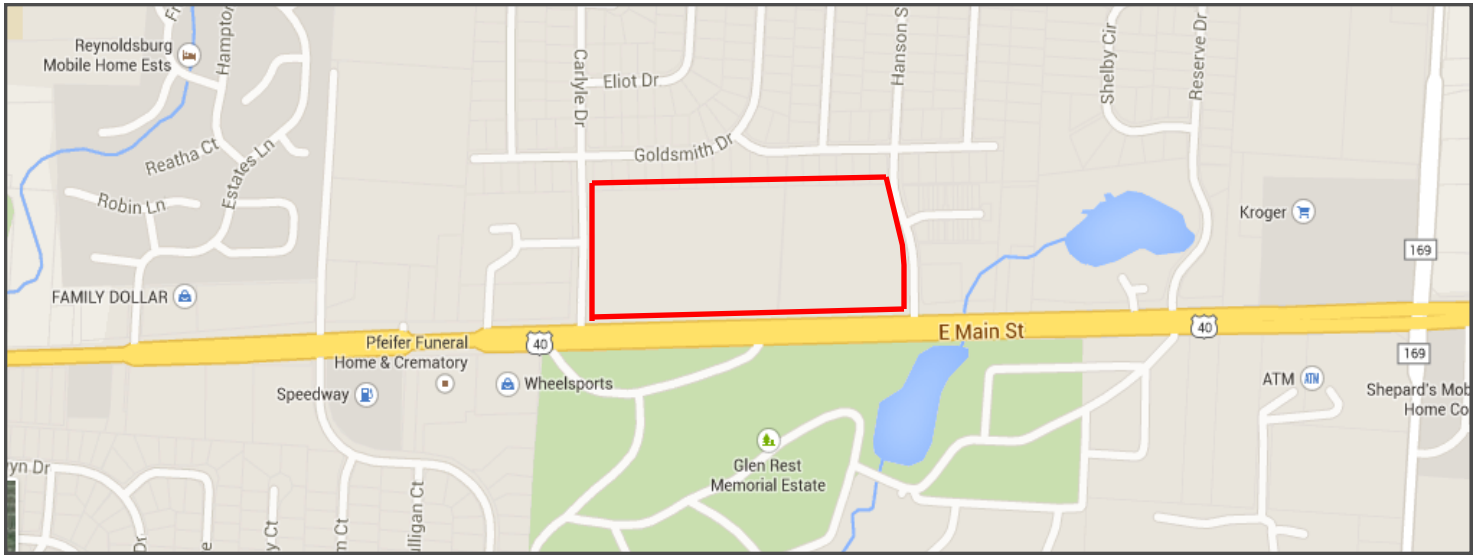


CAPITOL
EQUITIES

DEVELOPMENT LAND

View all of our properties at capitolequities.com

E. MAIN STREET & CARLYLE DRIVE REYNOLDSBURG, OH 43068



LOCATION: E. Main Street and Carlyle Drive
Reynoldsburg, OH

ACREAGE: 14.63 Acres

PURCHASE PRICE: \$95,000 per acre
(Will Not Divide the two parcels)

ZONED: Commercial

UTILITIES: Utilities at site. See page 3 for utility
service exhibit

TRAFFIC COUNTS: 13,660 vpd

DEMOGRAPHICS:

2015 Projection	1 mile	3 miles	5 miles
Population:	3,562	68,536	128,470
Households:	1,440	26,514	50,673
Average HH Income:	\$63,951	\$64,469	\$61,032

LIKE TO GET MORE INFO?
We'd love to hear from you.

Todd Kemmerer

tkemmerer@capitolequities.com
P: 614.760.5660 x 126

J.R. Kern

jrkern@capitolequities.com
P: 614.760.5660 x 124

Capitol Equities Realty

P: 614.760.5660
F: 614.798.0015

580 N. Fourth Street, Suite 120
Columbus, Ohio 43215

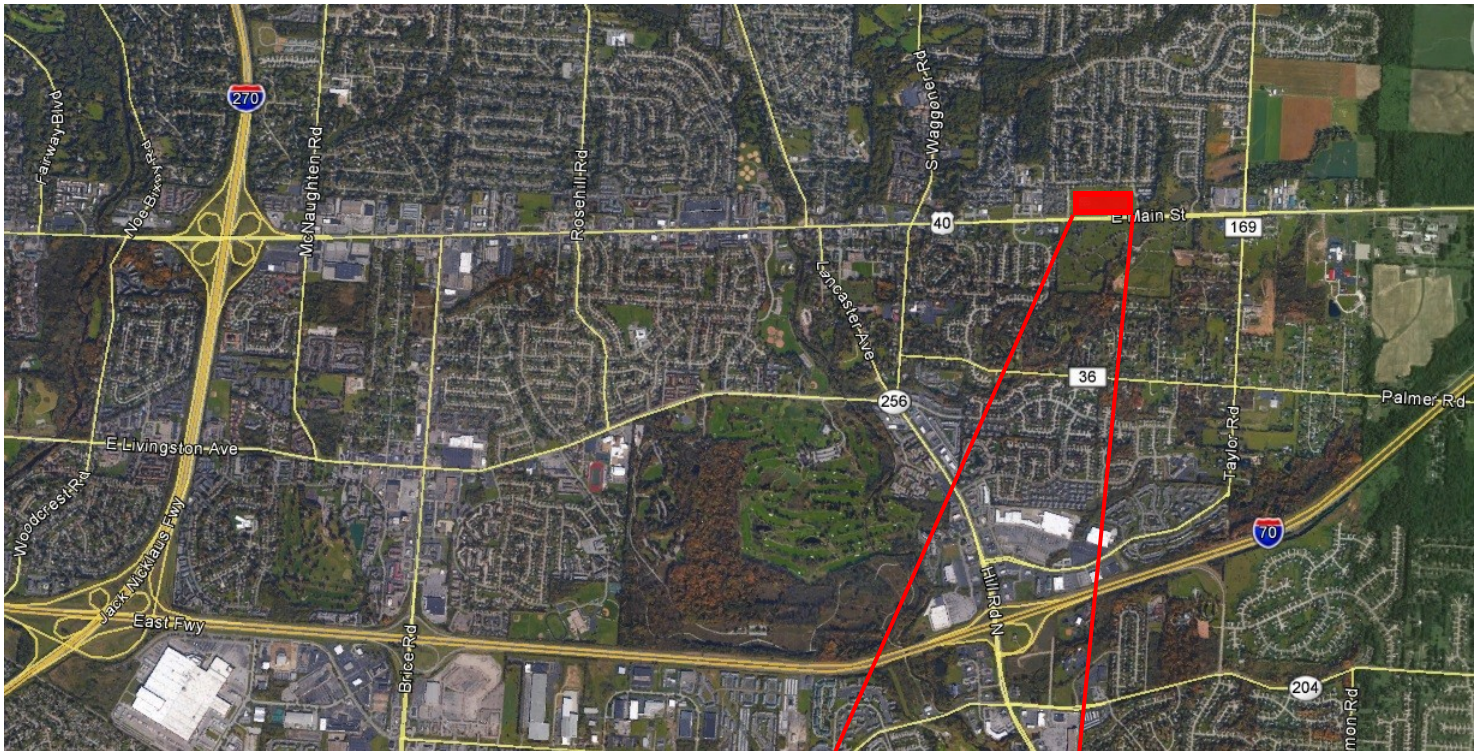
capitolequities.com



CAPITOL
EQUITIES

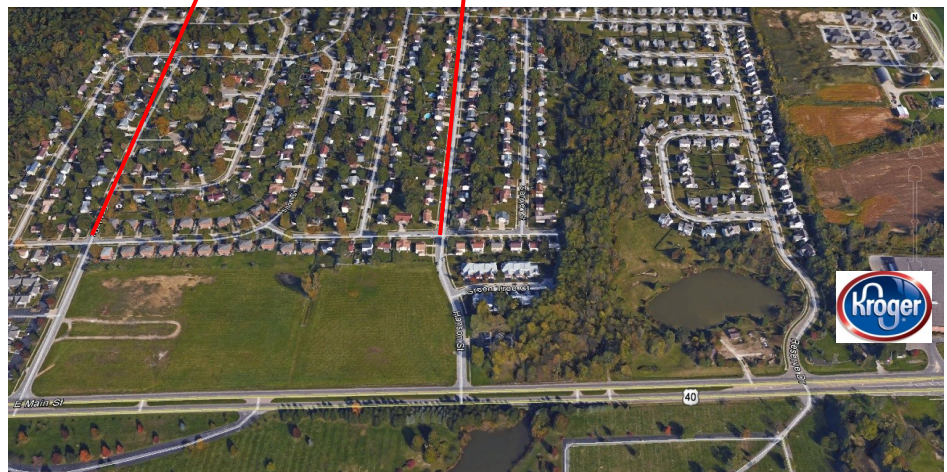
DEVELOPMENT LAND

E. MAIN STREET & CARLYLE DRIVE REYNOLDSBURG, OH 43068



PROPERTY FEATURES:

- 14.63 Acres
- Adjacent parcels zoned Residential



ZONING: Commercial
SCHOOLS: Reynoldsburg School District
9 ACRES: Parcel ID: 060-003828-00 (Franklin County)
5.63 ACRES: Parcel ID: 013-030390-00.000 (Licking County)



CAPITOL
EQUITIES

DEVELOPMENT LAND

E. MAIN STREET & CARLYLE DRIVE REYNOLDSBURG, OH 43068

