

@ 70 / 270 East

5225 Scarborough Blvd, Columbus, OH



USE: Industrial
AVAILABLE: 27.24 Acres

- Prime visibility along I-270 and I-70
 - 80,000 ADT on I-270
 - 129,000 ADT on I-70
- Immediate access to I-70
- 15 minutes from Columbus Airport; 17 minutes from downtown Columbus
- Access via Scarborough Blvd
- Rail served
- Zoned manufacturing
- 10 year 75% tax abatement from City of Columbus

	1 mi.	3 mi.	5 mi.
Households	5,273	46,023	94,756
Population	12,904	111,810	231,698
Median Income	\$42,464	\$43,673	\$48,823
Average Income	\$52,880	\$55,331	\$63,346



Land Development | Investment | Redevelopment | Construction Management

Leading *Development* Solutions • neyer1.com • 513.563.7555



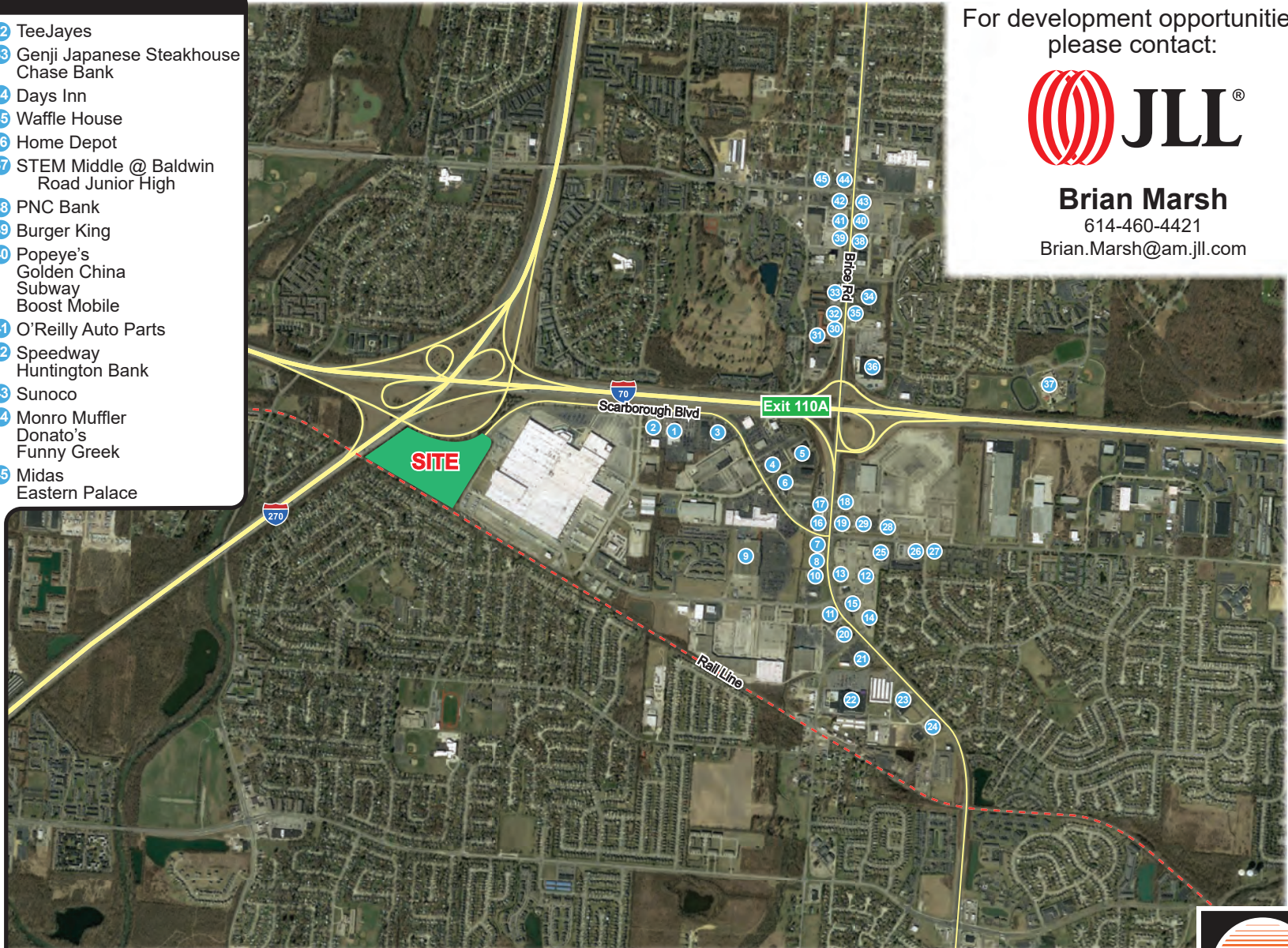
@ 70 / 270 East

5225 Scarborough Blvd, Columbus, OH



Area Amenities

- 1 Toyota Dealership
- 2 Fiat Dealership
- 3 Honda Dealership
- 4 Acura Dealership
- 5 Motel 6
- 6 Travelodge
- 7 Hertz
- 8 Walgreens
- 8 Waffle House
- 9 Front Room Furnishings
- 10 CNG
- 11 Applebee's
- 12 Michael's
- 12 FedEx
- 12 Family Dollar
- 12 Subway
- 13 Firestone Tire
- 13 Arby's
- 14 Ashley Furniture
- 15 Asian Star
- 16 KFC
- 16 Meineke
- 17 Fine Line Auto Body Shop
- 18 Starbucks Coffee
- 18 Cricket Wireless
- 18 Hibachi Go
- 19 BP
- 20 Speedway
- 21 Sears Outlet
- 22 Lowe's
- 23 Advance Auto Parts
- 23 Aldi
- 24 KinderCare
- 25 GFS
- 25 Jiffy Lube
- 26 Enterprise
- 27 UDF
- 28 McDonald's
- 29 Boston Market
- 29 Taco Bell
- 29 Chipotle
- 30 Tim Horton's
- 31 Red Roof Inn
- 31 La Quinta
- 31 Super 8
- 32 TeeJayes
- 33 Genji Japanese Steakhouse
- 33 Chase Bank
- 34 Days Inn
- 35 Waffle House
- 36 Home Depot
- 37 STEM Middle @ Baldwin Road Junior High
- 38 PNC Bank
- 39 Burger King
- 40 Popeye's
- 40 Golden China
- 40 Subway
- 40 Boost Mobile
- 41 O'Reilly Auto Parts
- 42 Speedway
- 42 Huntington Bank
- 43 Sunoco
- 44 Monro Muffler
- 44 Donato's
- 44 Funny Greek
- 45 Midas
- 45 Eastern Palace



For development opportunities please contact:



Brian Marsh

614-460-4421

Brian.Marsh@am.jll.com

Land Development | Investment | Redevelopment | Construction Management

Leading *Development* Solutions • neyer1.com • 513.563.7555

