



Lucks Food Decorating Company

3003 S Pine St
Tacoma, Washington 98409

Property Highlights

- 49,434 SF Total (shell: 40,684 SF, mezzanine: 8,750 SF)
- 2.27 acres (98,881 SF)
- Centrally located in the Nalley Valley with frontage on S Pine Street and Center Street
- Freestanding corporate image facility
- 9 dock high and 1 drive-in door
- 24' clear height
- Zoning: M-2 STGPD ST-M/IC, heavy industrial district
- Available May 1, 2021
- Call for Rates



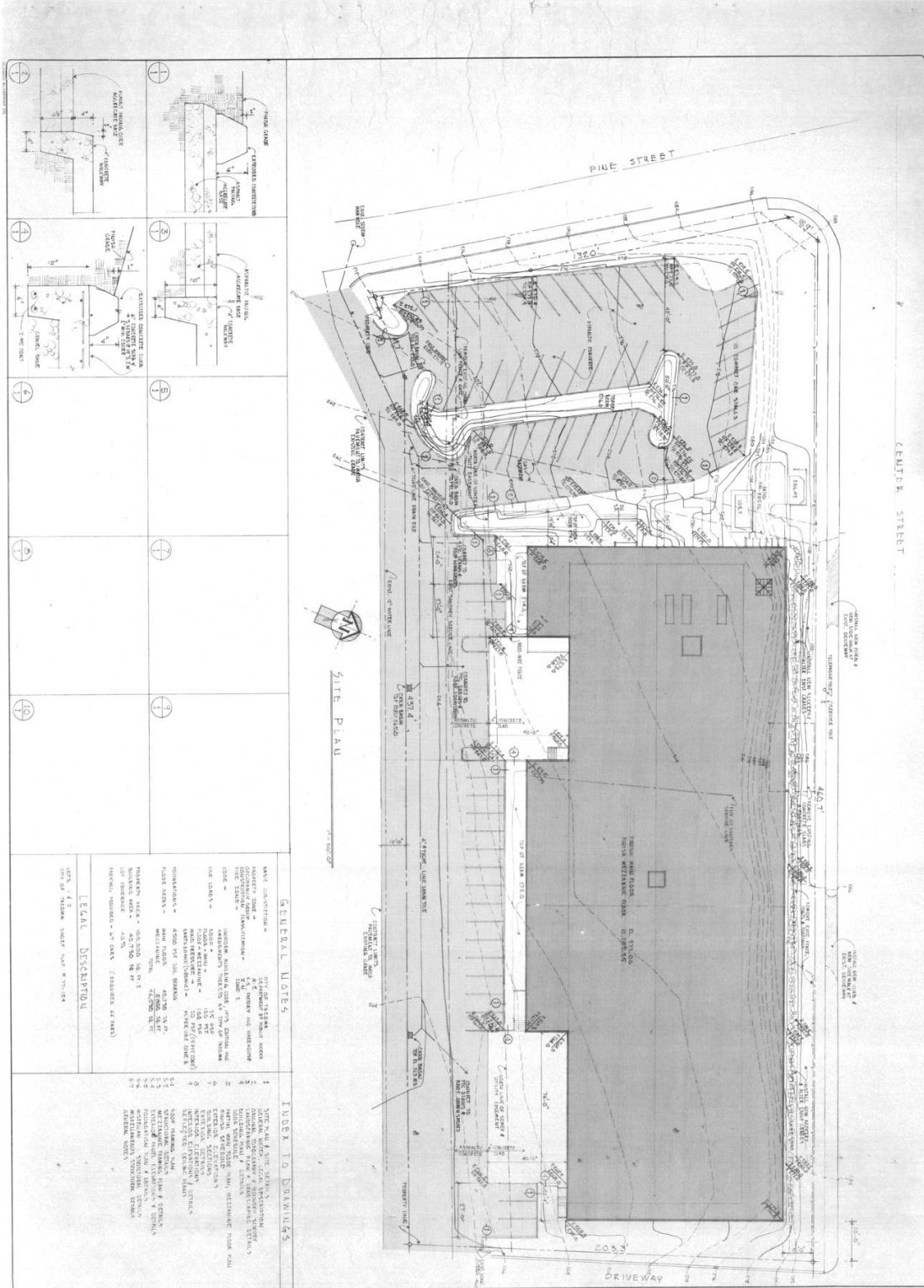
Dave Douglas, SIOR, CCIM
Partner | 253.203.1326
ddouglas@nai-psp.com

Arie Salomon, SIOR, CCIM
Principal | 425.586.5636
asalomon@nai-psp.com

Aaron Rosen
Vice President | 253.203.1319
arosen@nai-psp.com

Kyle Schipper
Senior Associate | 253.203.1320
kschipper@nai-psp.com





A Facility for the Oscar Lucks Company
Pine and Center Street
Tacoma, Washington

| REVISION | Item | mark | date |
|----------|------|------|------|
| | | | |
| | | | |
| | | | |

RIDENOUR, COCHRAN & LEWIS AIA ARCHITECTS 1715 114th Avenue S.E./Suite 212/Bellevue, Washington 98004/GLA-2074

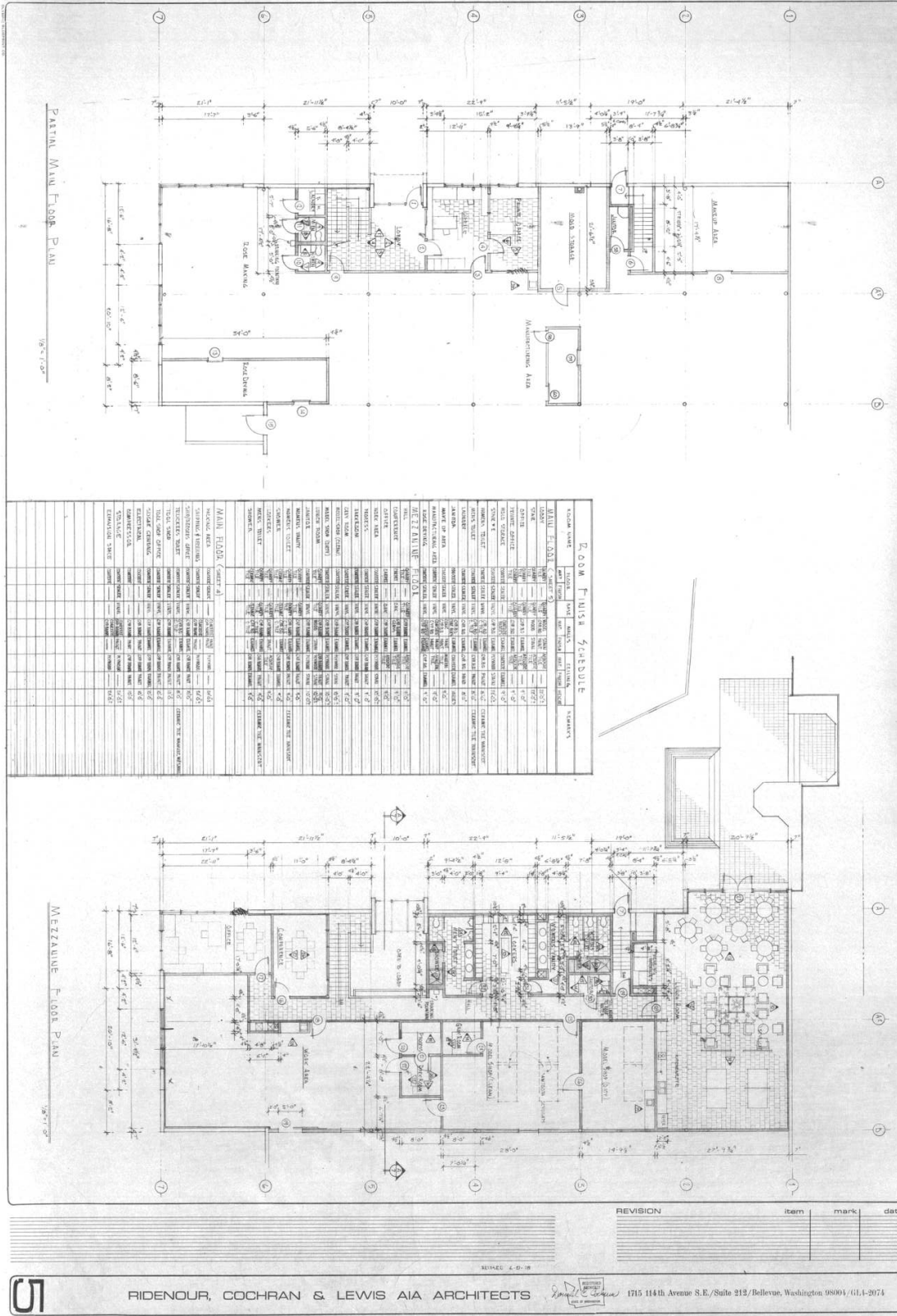
Dave Douglas, SIOR, CCIM
Partner | 253.203.1326
ddouglas@nai-psp.com

Arie Salomon, SIOR, CCIM
Principal | 425.586.5636
asalomon@nai-psp.com

Aaron Rosen
Vice President | 253.203.1319
arosen@nai-psp.com

Kyle Schipper
Senior Associate | 253.203.1320
kschipper@nai-psp.com





Dave Douglas, SIOR, CCIM Partner | 253.203.1326 ddouglas@nai-psp.com
Arie Salomon, SIOR, CCIM Principal | 425.586.5636 asalomon@nai-psp.com
Aaron Rosen Vice President | 253.203.1319 arosen@nai-psp.com
Kyle Schipper Senior Associate | 253.203.1320 kschipper@nai-psp.com



THE INFORMATION SUPPLIED HEREIN IS FROM SOURCES WE DEEM RELIABLE. IT IS PROVIDED WITHOUT ANY REPRESENTATION, WARRANTY OR GUARANTEE, EXPRESSED OR IMPLIED, AS TO ITS ACCURACY. PROSPECTIVE BUYER OR TENANT SHOULD CONDUCT AN INDEPENDENT INVESTIGATION AND VERIFICATION OF ALL MATTERS DEEMED TO BE MATERIAL, INCLUDING, BUT NOT LIMITED TO, STATEMENTS OF INCOME AND EXPENSES. CONSULT YOUR ATTORNEY, ACCOUNTANT OR OTHER PROFESSIONAL ADVISOR.