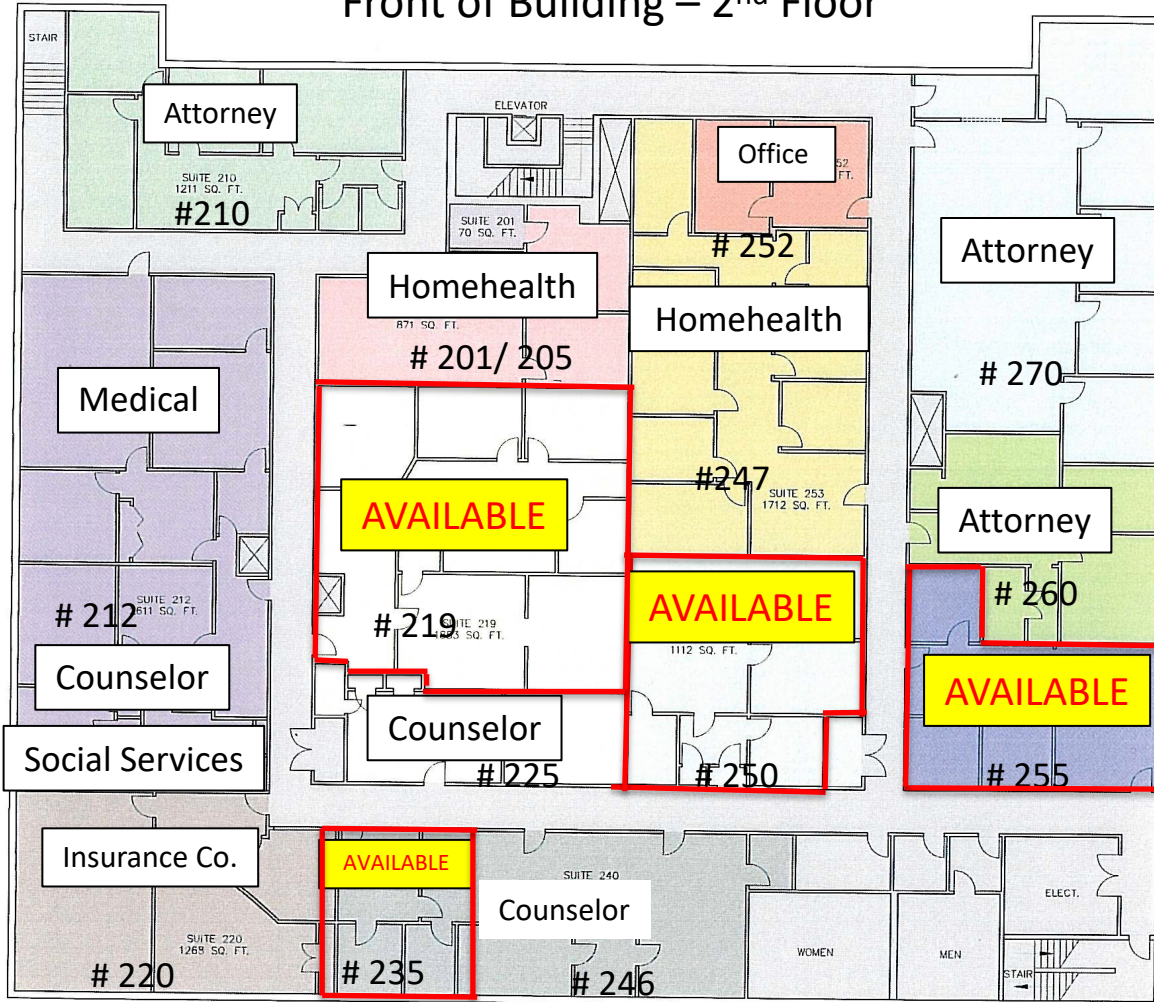


11th Street Professional Building

Front of Building – 2nd Floor



SECOND FLOOR PLAN

*square footages include a 12% "add on factor" for common area

Suite 201/205:

1059 sf

Suite 210:

1370 sf

Suite 211:

586 sf

Suite 212:

602 sf

Suite 213:

1675 sf

Suite 219:

2109 sf

Suite 220:

1951sf

Suite 225:

545 sf

Suite 235:

819.60 SF

Suite 246:

1098 sf

Suite 247:

1917.50 sf

Suite 250:

1245 sf

Suite 252:

408 sf NRA

Suite 255:

958 sf NRA

Suite 270:

3222.50 sf

Engineers & Designers
SIGMA ENGINEERS, INC.
 4059 Colley Ave.
 Beaumont, Texas 77706
 Phone (409) 808-1000
 Fax (409) 808-3420

11TH STREET PROFESSIONAL BUILDING
 LEASE SPACE SQUARE FOOTAGE
 BEAUMONT, TEXAS

TAG #:	
ISSUED FOR REVIEW	07-31-11
DRAWN BY	SKM
CHECKED BY	SKM
APPROVED BY	
SHEET NUMBER	A1.2
OF SHEETS	
PROJECT NO.	11-361