

## 43 Norfolk Street

San Francisco, CA

Approximately 2,700 sq ft on  
first and second floors

Building site area: 1,350 sq ft /  
54' x 25' (approx.)

Year built/renovated: 1947/2012

Height limit: 55-x

APN/Zoning: 3521-052 / WMUG  
(West SOMA mixed use-general)

Existing tenant in place through  
8/31/2017 — currently paying  
\$7,100 per month

Sales price: \$1.4 million



### Contact

**Jaclyn Marshall**  
415.229.8894  
jaclynm@kiddermathews.com  
LIC #01846532

**Bruce McLellan**  
415.229.8981  
brucem@kiddermathews.com  
LIC #00879071

## 43 Norfolk Street

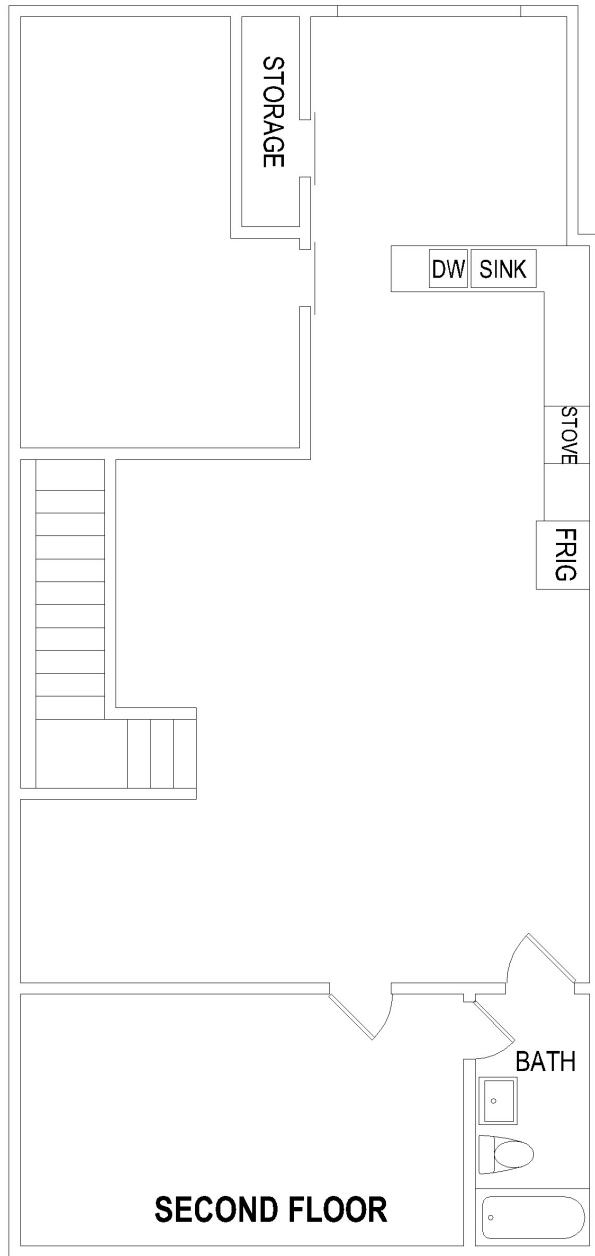
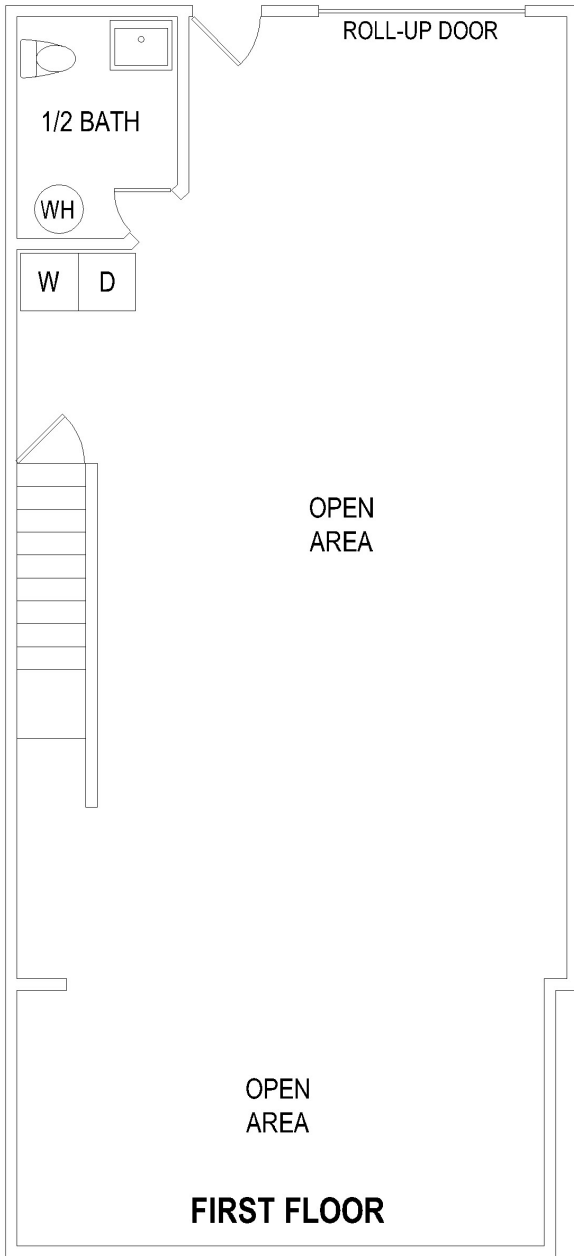


### Contact

**Jaclyn Marshall**  
415.229.8894  
jaclynm@kiddermathews.com  
LIC #01846532

**Bruce McLellan**  
415.229.8981  
brucem@kiddermathews.com  
LIC #00879071

## 43 Norfolk Street



### Contact

**Jaclyn Marshall**  
415.229.8894  
jaclynm@kiddermathews.com  
LIC #01846532

**Bruce McLellan**  
415.229.8981  
brucem@kiddermathews.com  
LIC #00879071