

# PRIME RETAIL SPACE ADJACENT TO KOHL'S

Douglasville, GA 30135 | 2989 Chapel Hill Road | Chapel Hill Rd & Stuart Mill Rd | Store #1033



AVAILABLE SF:  
25,200 SF

FRONTAGE:  
APPROX. 98'5"

ZONING:  
COMMERCIAL

RATES:  
CALL FOR DETAILS

## AREA ANCHORS



- 25,200 SF junior anchor endcap available fronting Chapel Hill Rd
- Adjacent co-tenants: Hobby Lobby, Aldi and LA Fitness
- Signalized and full access points

DEMOGRAPHICS	1 MILE	3 MILES	5 MILES	TRAFFIC COUNTS	
2018 POPULATION DENSITY	7,891	46,197	90,740	Chapel Hill Road	21,400 AADT
2018 DAYTIME POPULATION	9,800	46,753	76,570		
2018 AVERAGE HH INCOME	100,267	78,323	76,186		
2018 MEDIAN HH INCOME	78,874	78,323	76,186		



FOR MORE INFORMATION, CONTACT EXCLUSIVE AGENT(S):  
PATRICK BENTLEY • patrick.bentley@tscg.com • 770.955.2434

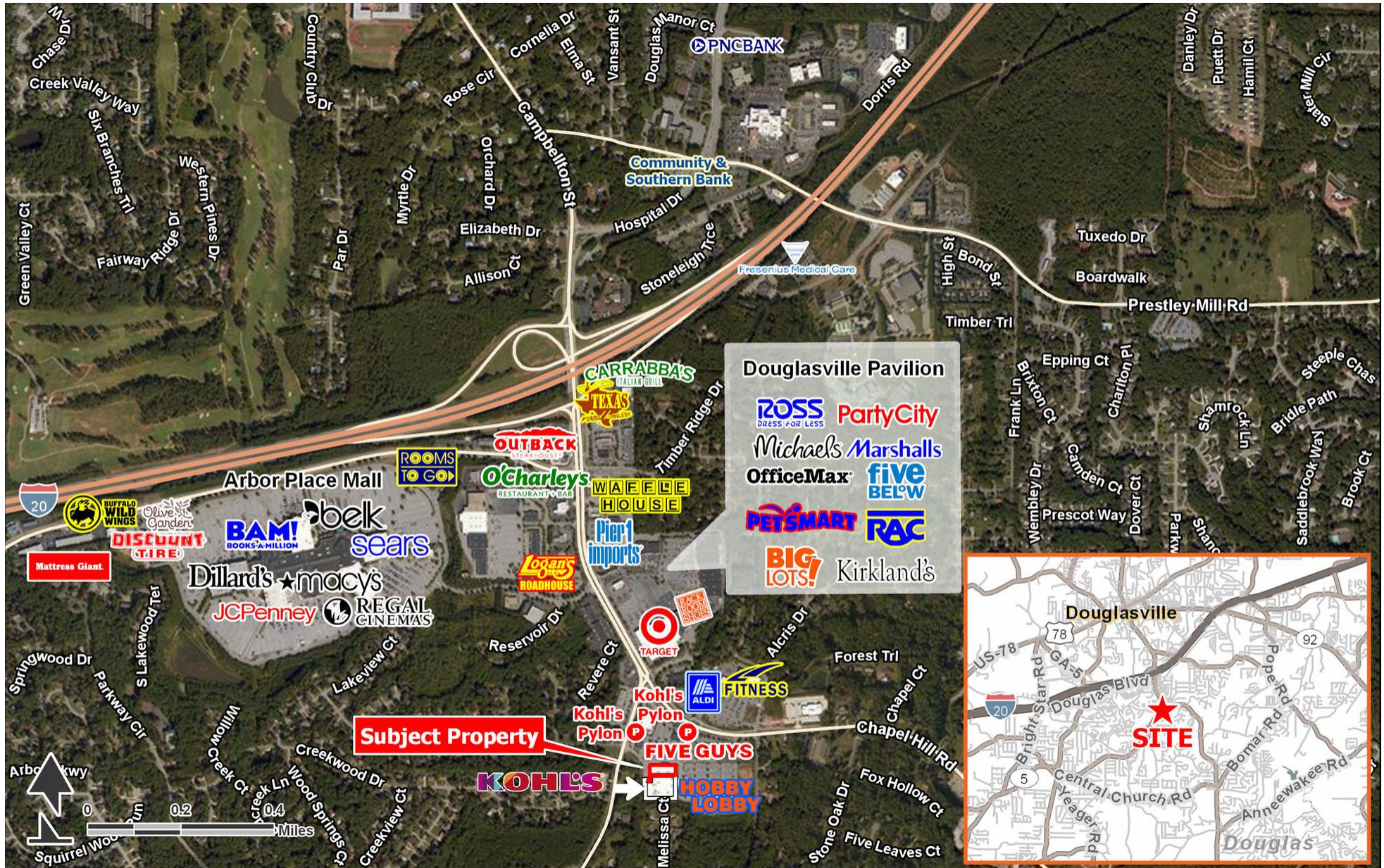


Demographics: Esri 2018 No warranty expressed or implied has been made as to the accuracy of the information provided herein, no liability assumed for error or omissions.



# PRIME RETAIL SPACE ADJACENT TO KOHL'S

Douglasville, GA 30135 | 2989 Chapel Hill Road | Chapel Hill Rd & Stuart Mill Rd | Store #1033



FOR MORE INFORMATION, CONTACT EXCLUSIVE AGENT(S):  
 PATRICK BENTLEY • [patrick.bentley@tscg.com](mailto:patrick.bentley@tscg.com) • 770.955.2434

TSCG

Stan Johnson Co.  
 THE NET LEASE AUTHORITY™

CHAINLINKS  
 RETAIL ADVISORS

Demographics: Esri 2018 No warranty expressed or implied has been made as to the accuracy of the information provided herein, no liability assumed for error or omissions.



# PRIME RETAIL SPACE ADJACENT TO KOHL'S

Douglasville, GA 30135 | 2989 Chapel Hill Road | Chapel Hill Rd & Stuart Mill Rd | Store #1033



FOR MORE INFORMATION, CONTACT EXCLUSIVE AGENT(S):  
 PATRICK BENTLEY • [patrick.bentley@tscg.com](mailto:patrick.bentley@tscg.com) • 770.955.2434

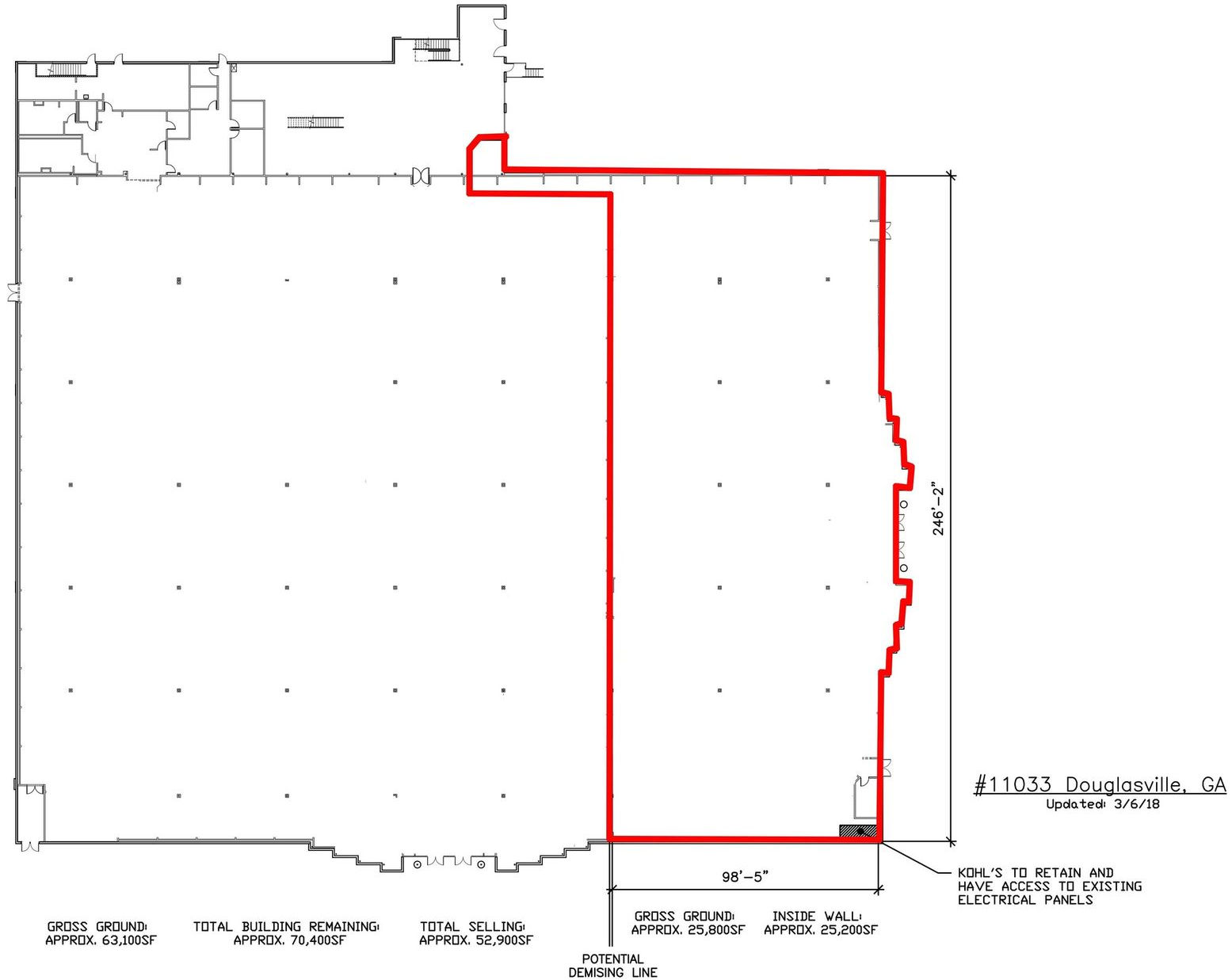


Demographics: Esri 2018 No warranty expressed or implied has been made as to the accuracy of the information provided herein, no liability assumed for error or omissions.



# PRIME RETAIL SPACE ADJACENT TO KOHL'S

Douglasville, GA 30135 | 2989 Chapel Hill Road | Chapel Hill Rd & Stuart Mill Rd | Store #1033



FOR MORE INFORMATION, CONTACT EXCLUSIVE AGENT(S):  
PATRICK BENTLEY • [patrick.bentley@tscg.com](mailto:patrick.bentley@tscg.com) • 770.955.2434

