

# Office / Retail Space for Lease



**DUEMELANDS**  
COMMERCIAL REAL ESTATE

1420 24<sup>th</sup> Avenue SW - Minot, North Dakota



**Lease Rate: Negotiable**

## Property Highlights

- ◆ Up to 2,500 sq. ft. available to Lease
- ◆ Newly remodeled
- ◆ Abundant parking
- ◆ Pylon & building signage available
- ◆ Located on Dakota Square Mall ring road
- ◆ Easy access to 16<sup>th</sup> Street SW & Hwy. 2
- ◆ Potential uses include offices, retail, or medical

## Minot Highlights

- ◆ 4<sup>th</sup> largest city in North Dakota
- ◆ Within eastern edge of Bakken Shale Formation
- ◆ Located at junction of main arterial Highway 2 (east-west) & Highway 83 (north-south)

## Demographics

- ◆ Population (city): 41,251
- ◆ Population (retail area): 73,146
- ◆ Average HH Income: \$67,746



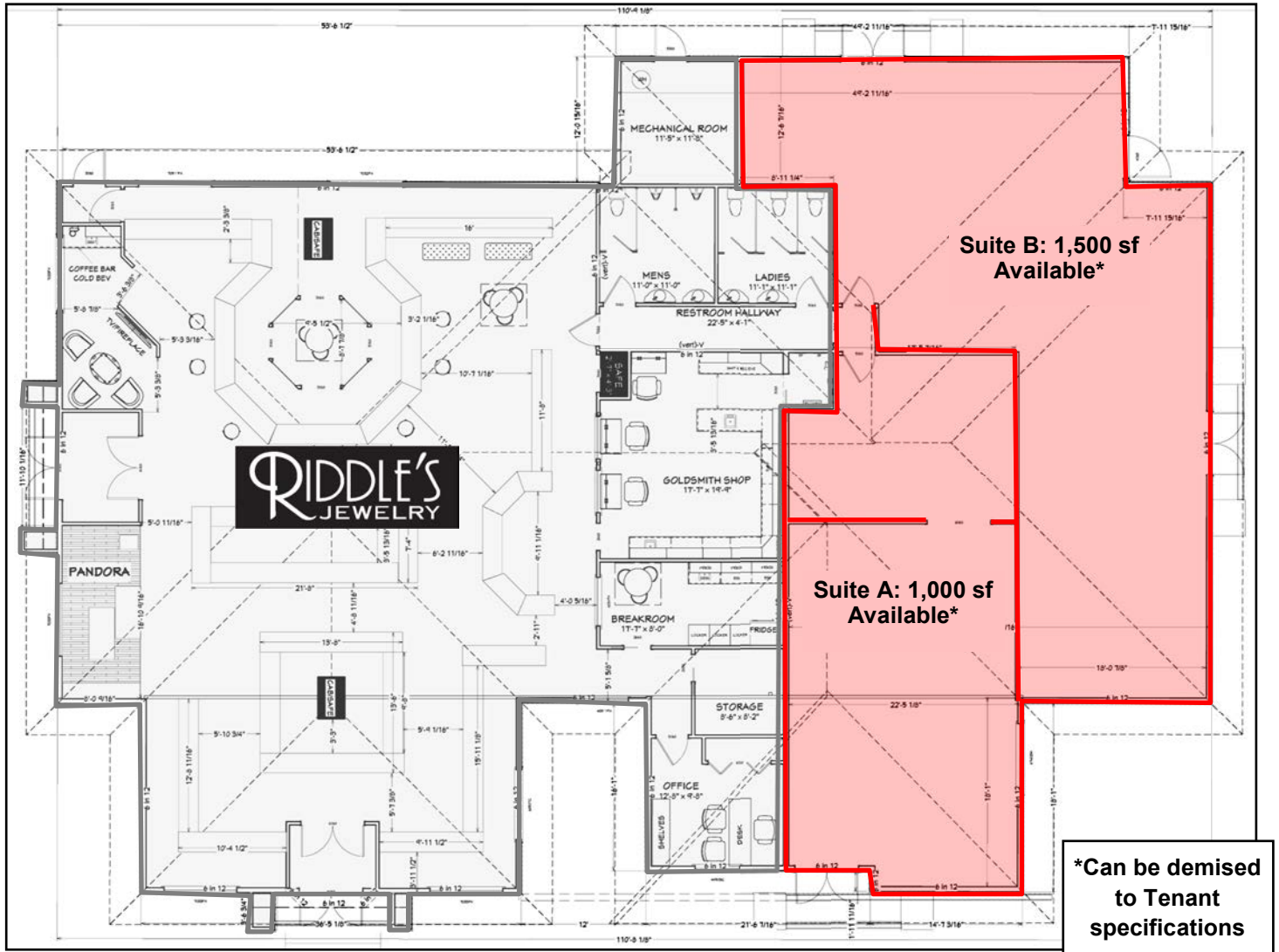
**Duemelands Commercial Real Estate**  
301 E. Thayer Avenue - Bismarck, ND 58501  
Phone: (701) 221-2222  
[www.duemelands.com](http://www.duemelands.com)

**Jill Duemeland, CCIM**  
*CEO & President*  
Phone: 701.221.9033  
[jill@duemelands.com](mailto:jill@duemelands.com)

**April Eide, CCIM**  
*Vice President of Brokerage*  
Direct: 701.223.5863  
[april@duemelands.com](mailto:april@duemelands.com)

# → Floorplan

Retail/Office for Lease



**Duemelands Commercial Real Estate**  
301 E. Thayer Avenue - Bismarck, ND 58501  
Phone: (701) 221-2222  
[www.duemelands.com](http://www.duemelands.com)

**Jill Duemeland, CCIM**  
CEO & President  
Phone: 701.221.9033  
[jill@duemelands.com](mailto:jill@duemelands.com)

**April Eide, CCIM**  
Vice President of Brokerage  
Direct: 701.223.5863  
[april@duemelands.com](mailto:april@duemelands.com)

# Exterior Pictures

Retail/Office for Lease



**Duemelands Commercial Real Estate**  
301 E. Thayer Avenue - Bismarck, ND 58501  
Phone: (701) 221-2222  
[www.duemelands.com](http://www.duemelands.com)

**Jill Duemeland, CCIM**  
CEO & President  
Phone: 701.221.9033  
[jill@duemelands.com](mailto:jill@duemelands.com)

**April Eide, CCIM**  
Vice President of Brokerage  
Direct: 701.223.5863  
[april@duemelands.com](mailto:april@duemelands.com)

# Property Location Aerials

Retail/Office for Lease

Minot, North Dakota



**Duemelands Commercial Real Estate**  
 301 E. Thayer Avenue - Bismarck, ND 58501  
 Phone: (701) 221-2222  
[www.duemelands.com](http://www.duemelands.com)

**Jill Duemeland, CCIM**  
 CEO & President  
 Phone: 701.221.9033  
[jill@duemelands.com](mailto:jill@duemelands.com)

**April Eide, CCIM**  
 Vice President of Brokerage  
 Direct: 701.223.5863  
[april@duemelands.com](mailto:april@duemelands.com)