

FOR LEASE | 4,800 SF

SHOWROOM/OFFICE/RETAIL WAREHOUSE

4131

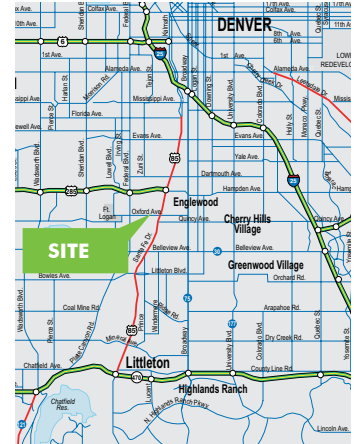
S. NATCHES COURT, UNITS H & J

OXFORD-SANTA FE BUSINESS PARK | ENGLEWOOD, CO 80110



PROPERTY FEATURES

- + 3' x 8' backlit identification sign
- + Drive-in loading doors (10'x10')
- + On-site management
- + Close to Riverpoint Shopping Center, banks, restaurants, Target and Costco
- + Free tenant and customer parking
- + 200 yards to Oxford Light Rail Station
- + Individual meter in each unit for gas and electricity



www.cbre.us/colorado

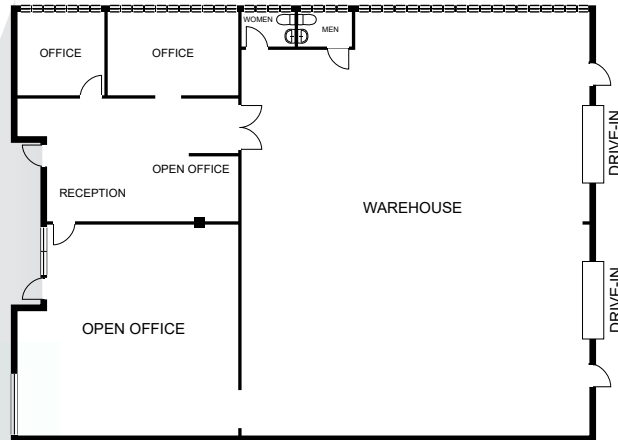
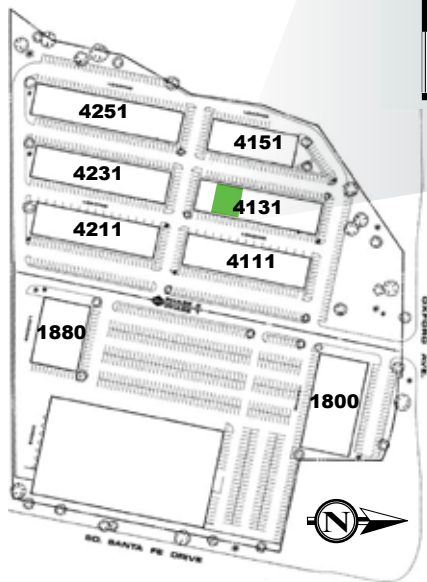
CBRE

FOR LEASE UNITS H & J

4131
S. NATCHES COURT
OXFORD-SANTA FE BUSINESS PARK



SITE PLAN



BUILDING DETAILS

AVAILABLE:	4,800 SF
OFFICE AREA:	900 SF
LOADING:	2 drive-in doors
ELECTRICAL:	400A, 220/208V, 3PH
CLEARANCE:	12'
YEAR BUILT:	1983-1984
LEASE RATE:	\$8.00/SF NNN
NNN EXPENSES:	\$3.95/SF (2020)



CONTACT US

MURRAY PLATT, SIOR

First Vice President
+1 720 528 6413
murray.platt@cbre.com

PAUL KLUCK, SIOR

First Vice President
+1 720 528 6405
paul.kluck@cbre.com

© 2020 CBRE, Inc. All rights reserved. This information has been obtained from sources believed reliable, but has not been verified for accuracy or completeness. You should conduct a careful, independent investigation of the property and verify all information. Any reliance on this information is solely at your own risk. CBRE and the CBRE logo are service marks of CBRE, Inc. All other marks displayed on this document are the property of their respective owners. Photos herein are the property of their respective owners. Use of these images without the express written consent of the owner is prohibited.

www.cbre.us/colorado

CBRE