

BECKER CROSSING

BECKER ROAD +
PORT ST. LUCIE BLVD

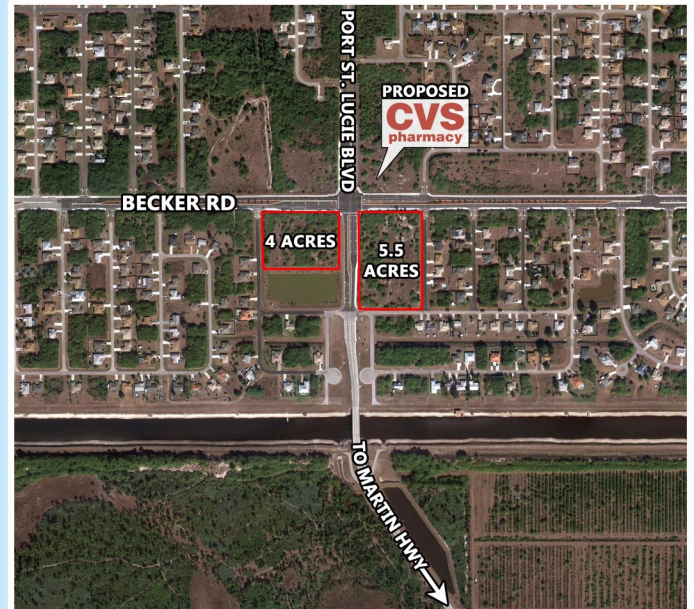
PORT ST. LUCIE, FL

SEC - UP TO 5.5 ACRES

SWC - 4 acres

(Parcels may be subdivided)

- Tremendous growth corridor
- Becker Road was recently Four-Laned
- Port St. Lucie Blvd Bridge into Martin County recently completed
- I-95 and Becker Road interchange recently completed



MELODY SPANO
561-212-2515 mspano@sraretail.com



1001 N US Hwy One, Ste. 710
Jupiter, FL 33477

BECKER CROSSING

BECKER ROAD +
PORT ST. LUCIE BLVD

PORT ST. LUCIE, FL

THE LANDING AT TRADITION



*We obtained the information above from sources we believe to be reliable. However, we have not verified its accuracy and make no guarantee, warranty or representation about it. You and your tax and legal advisors should conduct your own investigation of the property and transaction.

MELODY SPANO

561-212-2515 mspano@sraretail.com



1001 N US Hwy One, Ste. 710
Jupiter, FL 33477