



FOR LEASE

OFFICE / RETAIL SPACE AVAILABLE

338-340 MAIN STREET, SOUTHBRIDGE, MA 01550



Rated Best Commercial Real Estate Brokerage - Worcester Business Journal

BRIAN JOHNSON

Vice President

johnson@kelleher-sadowsky.com

O: 508.635.6783

C: 774.272.1112

CHRIS NAFF

Associate

naff@kelleher-sadowsky.com

O: 508.841.6212

C: 508.277.6275

EXECUTIVE SUMMARY



OFFERING SUMMARY

Property Type:	Retail
Building Size:	9,216 SF
Available SF:	2,400 SF
Lot Size:	0.13 Acres
Zoning:	GB - General Business
Lease Rate:	\$2,000 per month (Gross)
Utilities:	Oil Heat, National Grid Electric, Town Water & Sewer

PROPERTY OVERVIEW

Kelleher & Sadowsky Associates is pleased to introduce 338-340 Main Street in Southbridge, MA as available for lease. The ±2,400 square foot space is located on the first floor of this historic 1907 3-story brick building. Main Street in Southbridge is home to many local professional offices, retail shops, and restaurants. The property is walking distance to a CVS Pharmacy and Cumberland Farms and is only minutes from the Mass Pike, Route 20, and Interstate-84. The building abuts Southbridge's Central Street lot, a town parking lot that is slated for a complete renovation in the Summer of 2019, providing parking for both employees and customers. 338-340 Main Street is the perfect place for a new professional office or retail shop. Please give us a call to schedule a tour today.

DEMOGRAPHICS

	1 MILE	3 MILES	5 MILES
Total Households	4,075	8,735	13,449
Total Population	10,877	22,719	35,183
Average HH Income	\$47,120	\$57,302	\$66,769

BRIAN JOHNSON

Vice President

johnson@kelleher-sadowsky.com

O: 508.635.6783

C: 774.272.1112

CHRIS NAFF

Associate

naff@kelleher-sadowsky.com

O: 508.841.6212

C: 508.277.6275

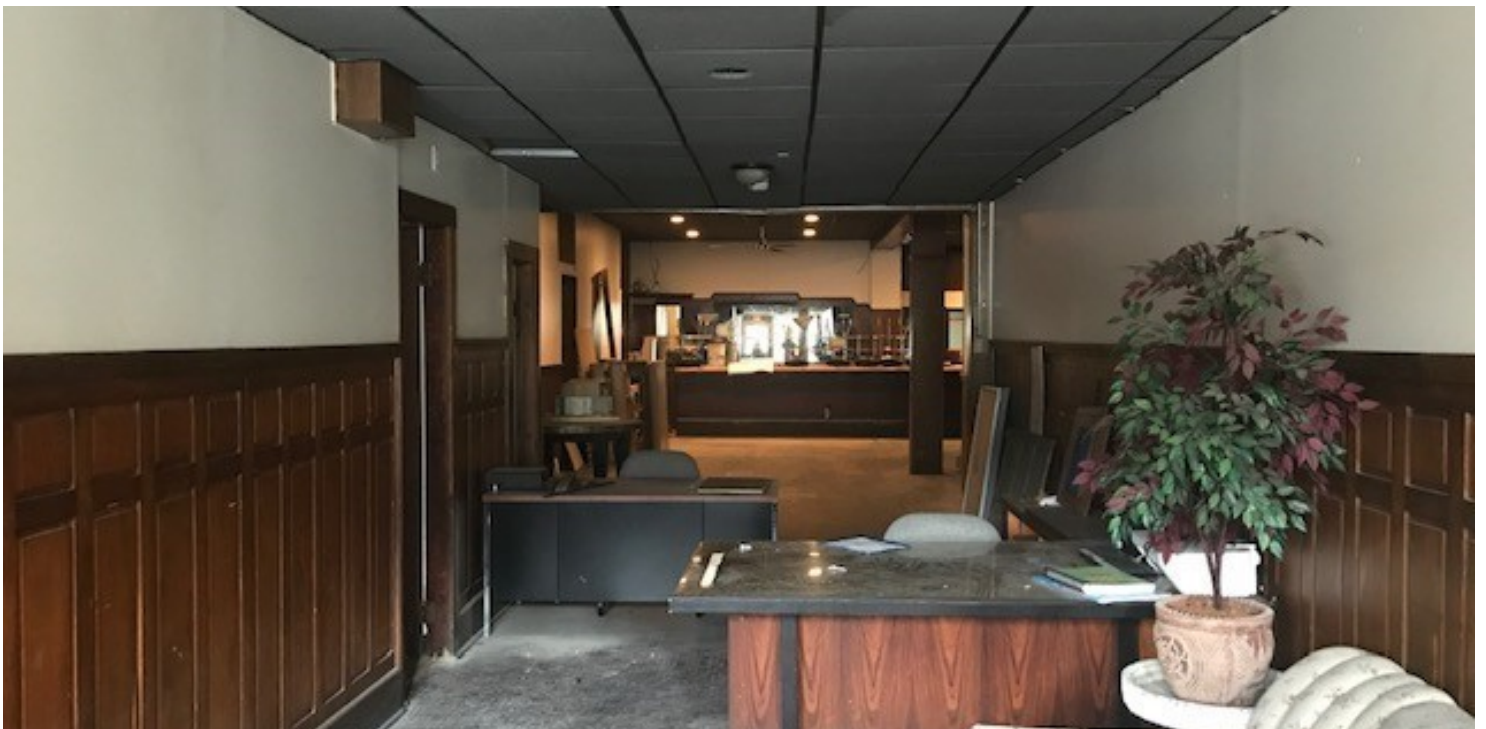


Worcester Best Commercial Real Estate Brokerage - Worcester Business Journal

120 Front Street, Suite 210 | Worcester, MA 01608 | 508.755.0707 | kelleher-sadowsky.com

FOR LEASE | OFFICE / RETAIL SPACE AVAILABLE

ADDITIONAL PHOTOS



BRIAN JOHNSON

Vice President

johnson@kelleher-sadowsky.com

O: 508.635.6783

C: 774.272.1112

CHRIS NAFF

Associate

naff@kelleher-sadowsky.com

O: 508.841.6212

C: 508.277.6275



Voted Best Commercial Real Estate Brokerage - Worcester Business Journal

120 Front Street, Suite 210 | Worcester, MA 01608 | 508.755.0707 | kelleher-sadowsky.com

This information has been obtained from sources believed reliable. We have not verified it and make no guarantee, warranty or representation about it. Any projections, opinions, assumptions or estimates used are for example only and do not represent the current or future performance of the property. You and your advisors should conduct an independent investigation of the property to determine to your own satisfaction the suitability of the property for your needs.