

ROSEVILLE'S PREMIER CLASS A OFFICE BUILDING

STONE POINT

CORPORATE CENTER
ROSEVILLE, CA



±2,308 TO ±12,711 SF AVAILABLE

1478 STONE POINT DRIVE
ROSEVILLE, CA



PROPERTY HIGHLIGHTS

1478 Stone Point - Stone Point Corporate Center is a Class A office and retail development in Sacramento's most dynamic submarket - Roseville, CA. 1478 Stone Point Drive is the only five-story office building in Roseville and provides easy access to I-80 and Highway 65. The mixed-use development includes 40,000 SF of high-end retail fronting Eureka Road, offering numerous options within walking distance, including the some of the area's finest restaurants, shops and entertainment venues.



BUILDING AMENITIES

Building offers two common conference rooms, fitness center with showers and lockers, ground floor food/coffee kiosk



SIGNAGE

Building and Monument signage available



PARKING

4 spaces per 1K square feet leased, optional reserved and unreserved subterranean parking available



ACCESS

Easy access to the I-80 Freeway



VIEWS

Spectacular views of the Sierras and Sacramento Valley



SECURITY

On-site 24hr security and security cameras



STONE POINT CORPORATE CENTER

LOCATION AERIAL



3

2

1

1

STONE POINT ROAD

EUREKA ROAD

ROCK RIDGE DRIVE

STONE POINT CORPORATE CENTER

DETAILS

- 1. FUTURE OFFICE DEVELOPMENT
- 2. ADVENTIST HEALTH CORPORATE HQ
- 3. ONSITE RETAIL AND FINE DINING AMENITIES

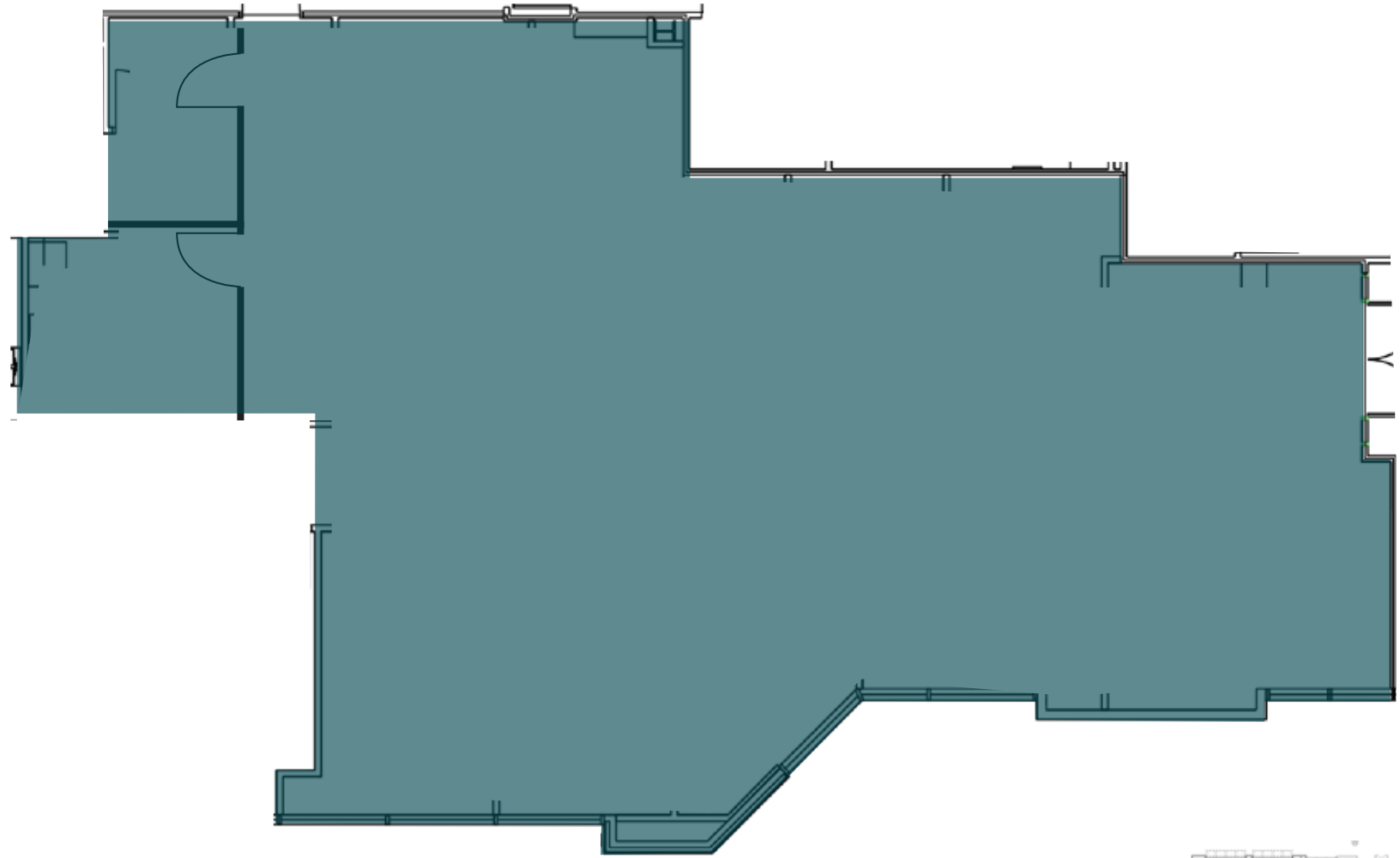
FLOOR PLANS

1st Floor

AVAILABILITY

1st Floor

SUITE	RSF
150	2,308



STONE POINT
CORPORATE CENTER

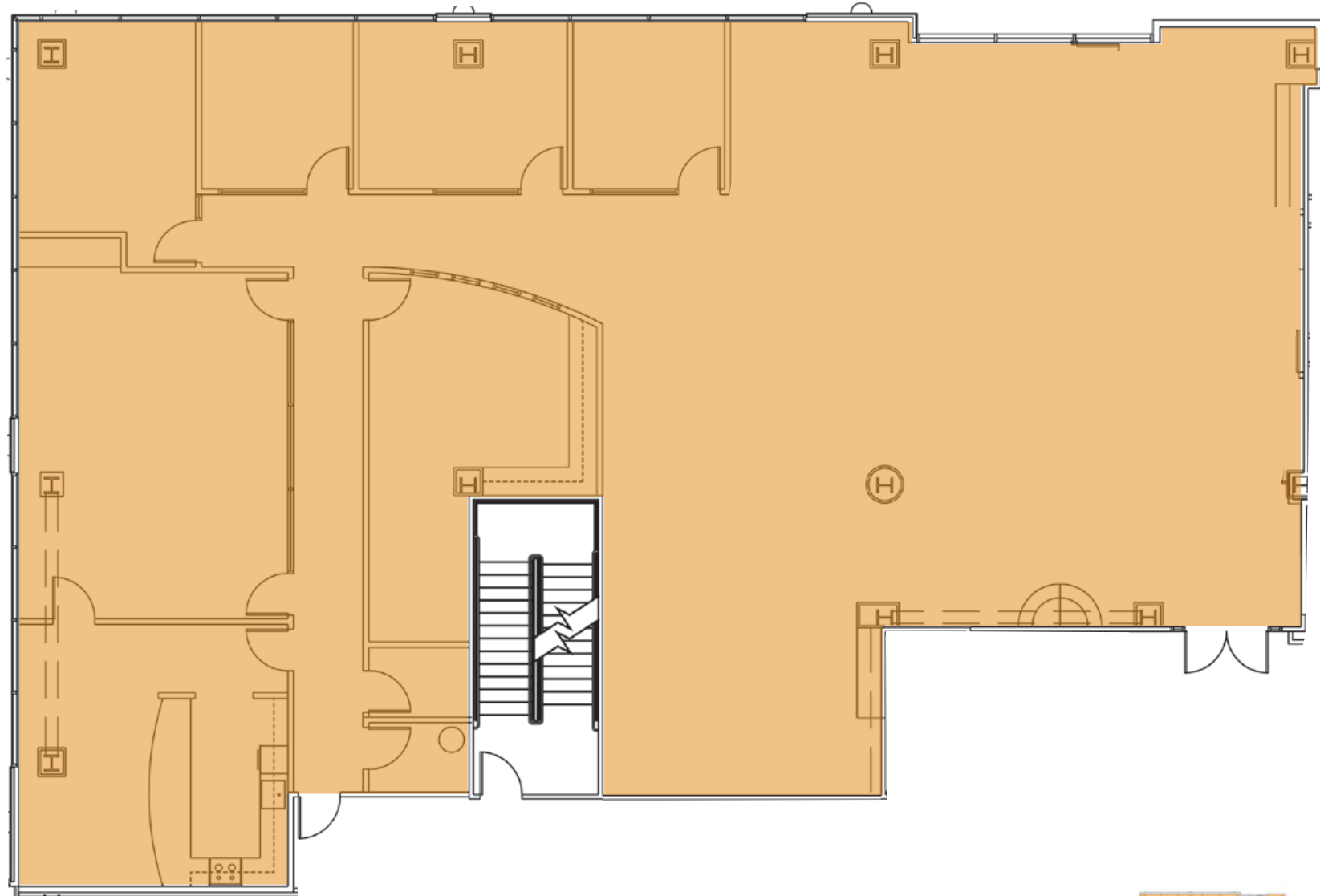
FLOOR PLANS

2nd Floor

AVAILABILITY

2nd Floor

SUITE	RSF
200	±5,559



STONE POINT
CORPORATE CENTER

FLOOR PLANS

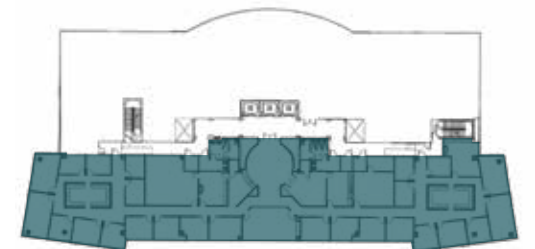
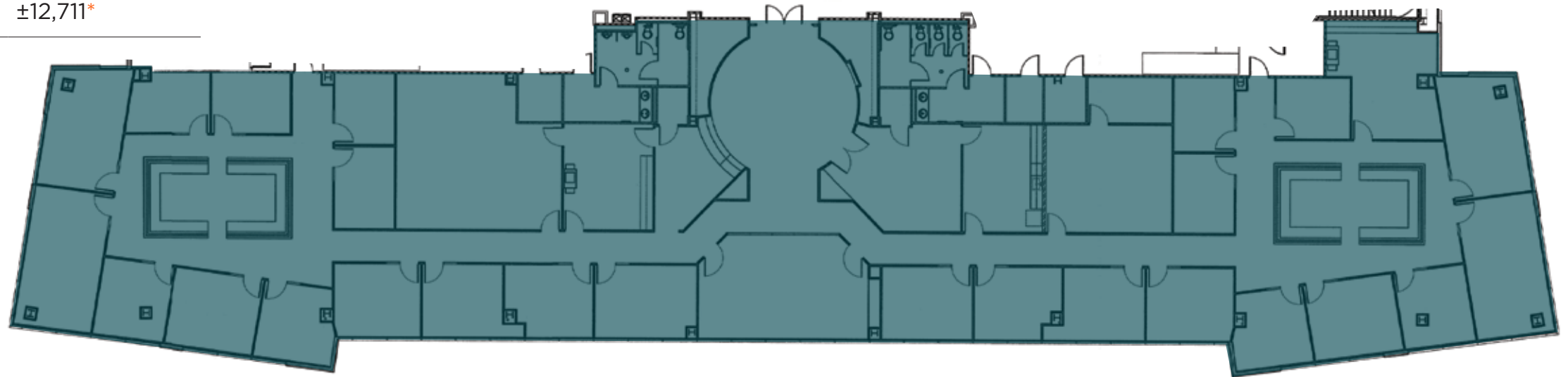
4th Floor

AVAILABILITY

2nd Floor

SUITE	RSF
400	±12,711*

*Divisible



STONE POINT
CORPORATE CENTER

FLOOR PLANS

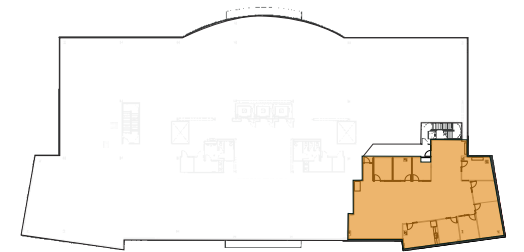
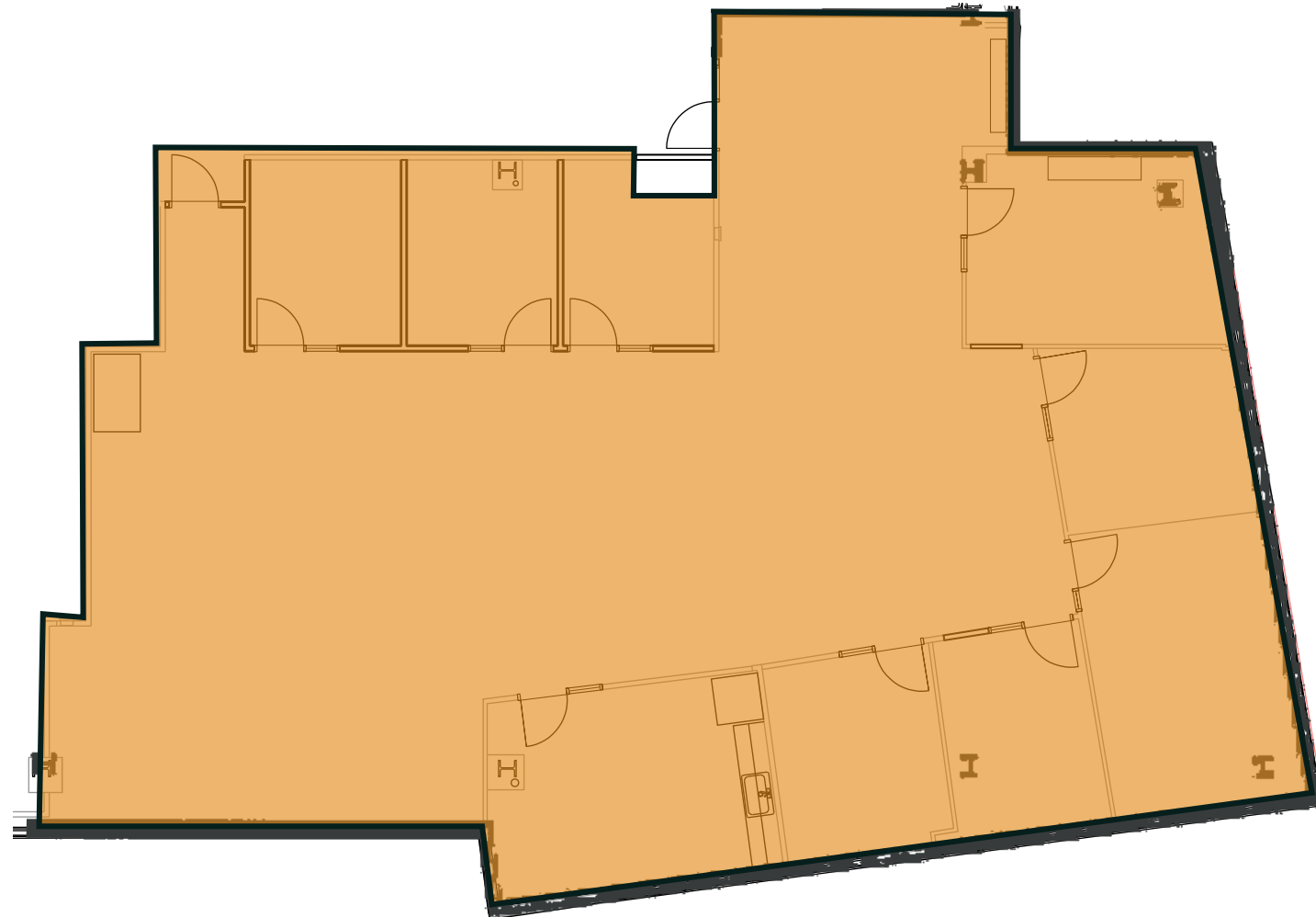
5th Floor

AVAILABILITY

5th Floor

SUITE	RSF
530	4,120*

*Sample space plan, currently 'warm shell' condition.



STONE POINT
CORPORATE CENTER



STONE POINT

CORPORATE CENTER

STONE POINT

CORPORATE CENTER

GALLERY



AMENITIES



STONE POINT

CORPORATE CENTER



1478 STONE POINT DRIVE
ROSEVILLE, CA

CONTACT INFORMATION

CHRIS SCHWARZE

EXECUTIVE DIRECTOR

916.288.4803

chris.schwarze@cushwake.com

CA License #01291261

CHAD COOK, MCR, SIOR, CCIM

SENIOR DIRECTOR

916.329.1562

chad.cook@cushwake.com

CA License #01711687

KEVIN PARTINGTON

EXECUTIVE DIRECTOR

916.288.4807

kevin.partington@cushwake.com

CA License #01199010



400 Capitol Mall, Suite 1800,

Sacramento, CA 95814

916.288.4800

LIC. #00616335

www.cushmanwakefield.com