



**OFFICE SPACE FOR LEASE**

**AMPLE PARKING & ABUNDANT AMENITIES NEARBY**

**Lease Rate**

\$18.00 - \$23.00/sf fsg

**Space Available**

Suite 104 - 1,031 sf  
Suite 206 - 1,004 sf  
Suite GL1 - 2,628 sf

**Property Highlights**

- Bank & ATM in lobby
- High ceilings
- Monument signage available
- Strong ownership
- Conveniently located

**Location Highlights**

- Great access off of Parker Road
- Close proximity to E-470
- Walking distance to shopping and restaurants

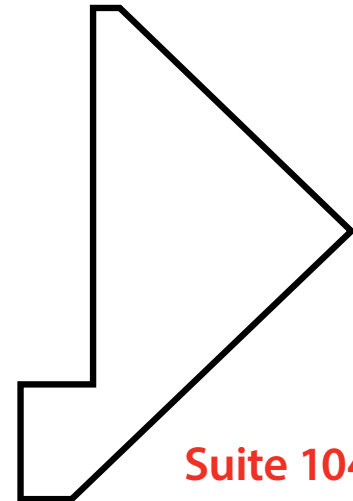
Partnership. Performance.

For more information, please contact:

**Justin Rayburn**, Principal  
720.508.8105  
justin.rayburn@avisonyoung.com

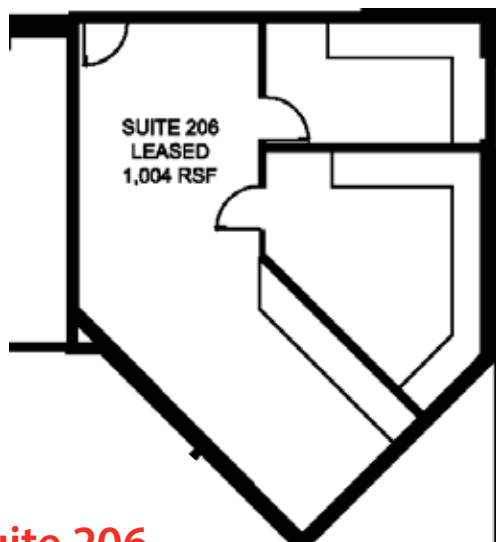
**Howard Schmidt**, Vice President  
720.508.8104  
howard.schmidt@avisonyoung.com

**Location Aerial**

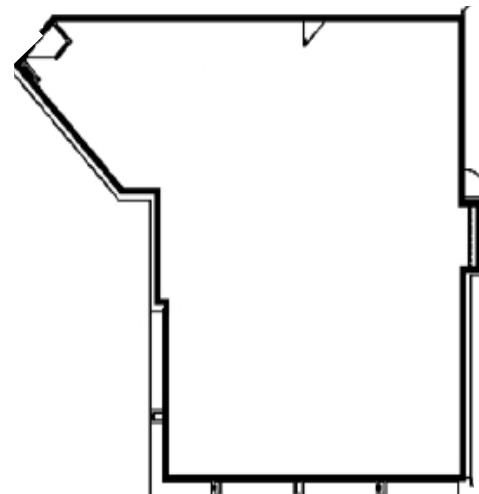


**Suite 104  
1,131 sf**

**Floorplans**



**Suite 206  
1,004 sf**



**Suite GL1  
2,628 sf**