

8901 SCHAEFER HIGHWAY
DETROIT, MICHIGAN

INDUSTRIAL FOR SALE OR LEASE
7,710 Square Feet Available



**SIGNATURE
ASSOCIATES**
KNOW SIGNATURE | KNOW RESULTS

TWO BUILDINGS

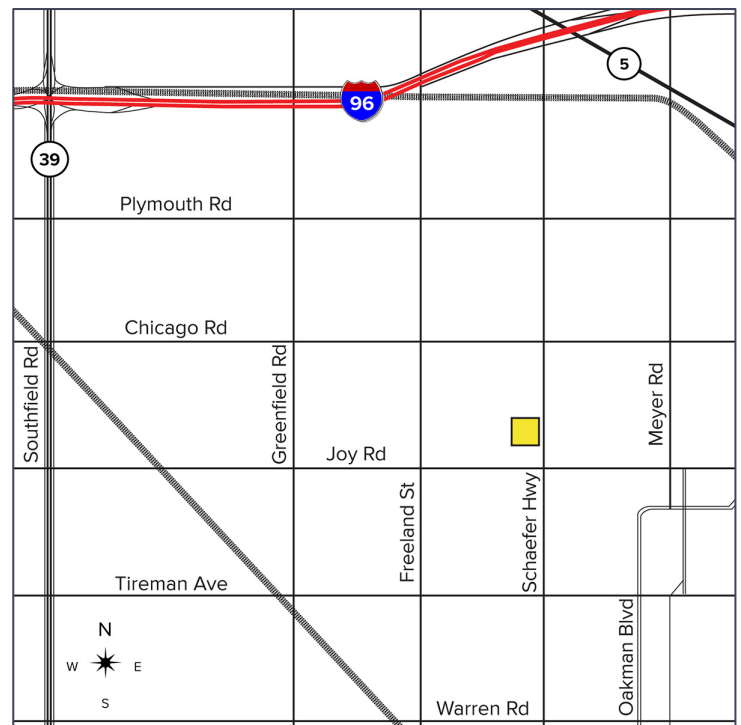


**VIEW
INSIDE**



PROPERTY FEATURES

- 7,710 square feet available
- 2,040 square feet of office
- 10' – 14' clear height
- (2) 14x10, 12x10 grade level doors
- Zoned M-4
- 3.5 acres
- (2) building site – (1) office and (1) shop
- Ideal for trucks or storage of heavy equipment
- Lease Rate: Contact Broker
- Sale Price: \$495,000 (\$64.20/sq.ft.)



For more information, please contact:

JOE STACK
(248) 359 0615
jstack@signatureassociates.com

CHRIS MONSOUR
(248) 948 0107
cmonsour@signatureassociates.com

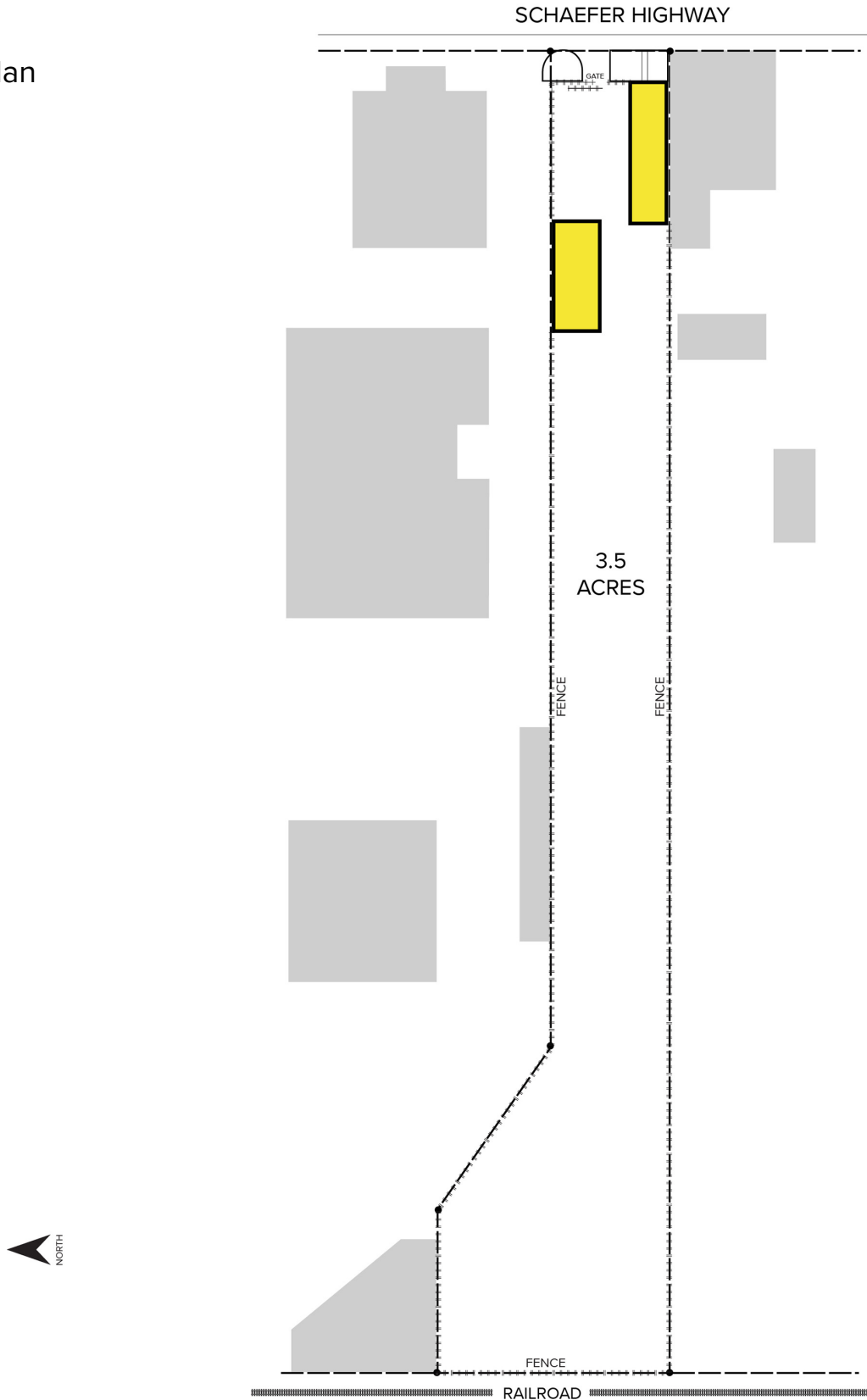
SIGNATURE ASSOCIATES
One Towne Square, Suite 1200
Southfield, MI 48076
www.signatureassociates.com

8901 Schaefer Highway – Detroit, Michigan

Industrial For Sale or Lease

7,710
Square Feet
AVAILABLE

Site Plan



For more information, please contact:

JOE STACK
(248) 359 0615
jstack@signatureassociates.com

CHRIS MONSOUR
(248) 948 0107
cmonsour@signatureassociates.com

SIGNATURE ASSOCIATES
One Towne Square, Suite 1200
Southfield, MI 48076
www.signatureassociates.com