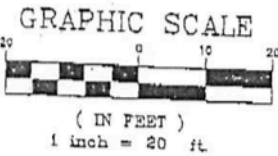


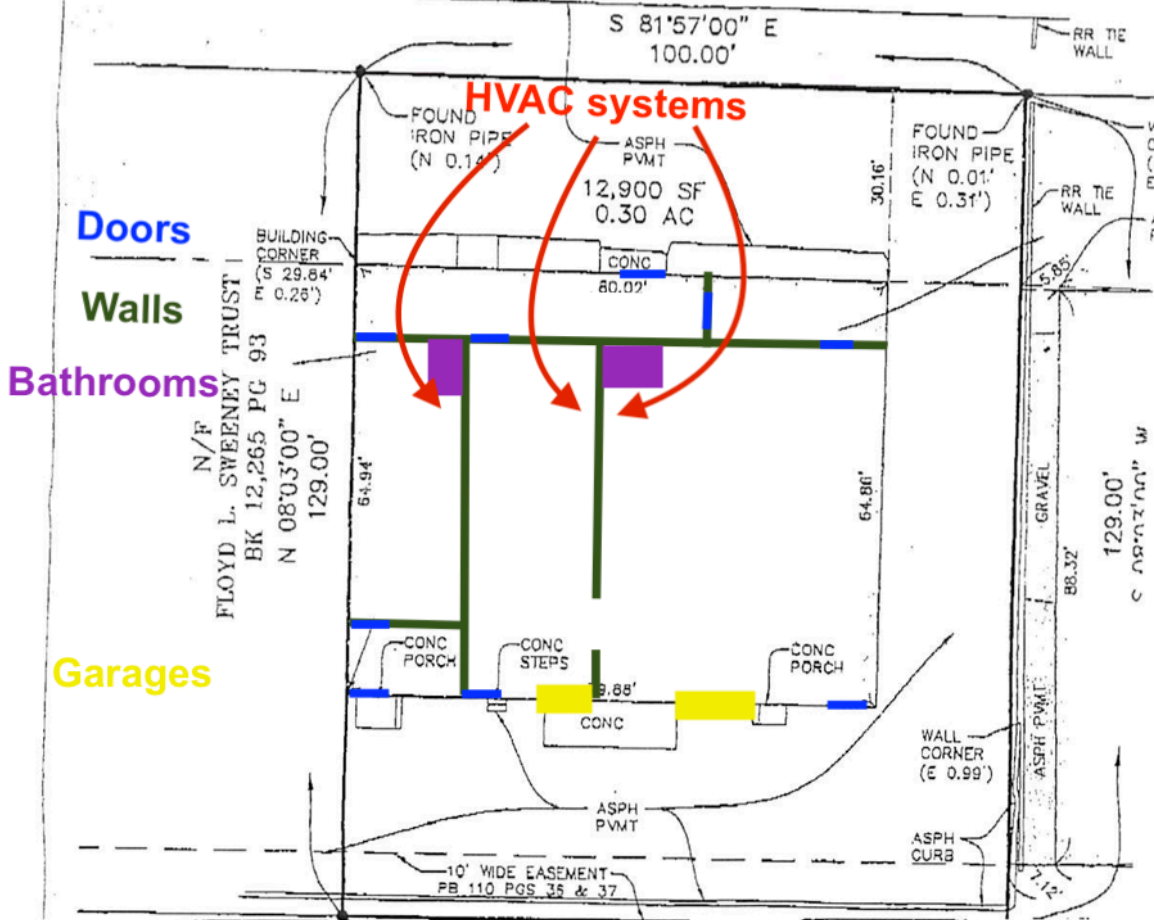
# A TRACT OF LAND IN SECTION 31, TOWNSHIP 46 NORTH, RANGE 6 EAST ST. LOUIS COUNTY, MISSOURI



## ABBREVI

|      |          |
|------|----------|
| N    | NORTH    |
| S    | SOUTH    |
| E    | EAST     |
| W    | WEST     |
| ASPH | ASPHALT  |
| CONC | CONCRETE |
| PVMT | PAVEMENT |

## BACH (50'W) BOULEVARD (DEDICATED PB 110 PGS 36 & 37)



100.00'  
N 81°57'00" E  
SECTION 1  
PAGE INDUSTRIAL CENTER  
PB 87 PG 9

**Massmann**  
SURVEYING

7751 Carondelet Ave. Suite 600  
St. Louis, MO 63105  
314-862-5577, 314-862-5579 F

This is to certify that at the request of Commercial Realty Associates, we have on the 28th day of April, 2004, executed a survey in accordance with the Missouri Board for Architects, Professional Engineers, and Professional Surveyors.