



## Park Place Office Building

733 East Airport, Baton Rouge, Louisiana 70806

### Property Highlights

- Office building in prime Baton Rouge location next to Independence Park
- Affordable office space with convenient access too Airline Hwy
- Great parking

### Available Spaces

Spaces	Lease Rate	Size (SF)
Suite 201	\$11.00 SF/yr	1,533
Suite 202	\$11.00 SF/yr	1,169



For more information

**Jonann Stutzman**

O: 225 297 7864 | C: 225 445 0473  
jonann@latterblum.com

**Ty Gose, SIOR, CCIM**

O: 225 295 0800 | C: 225 297 7808  
ty@latterblum.com

**CALL OR EMAIL FOR MORE INFORMATION**

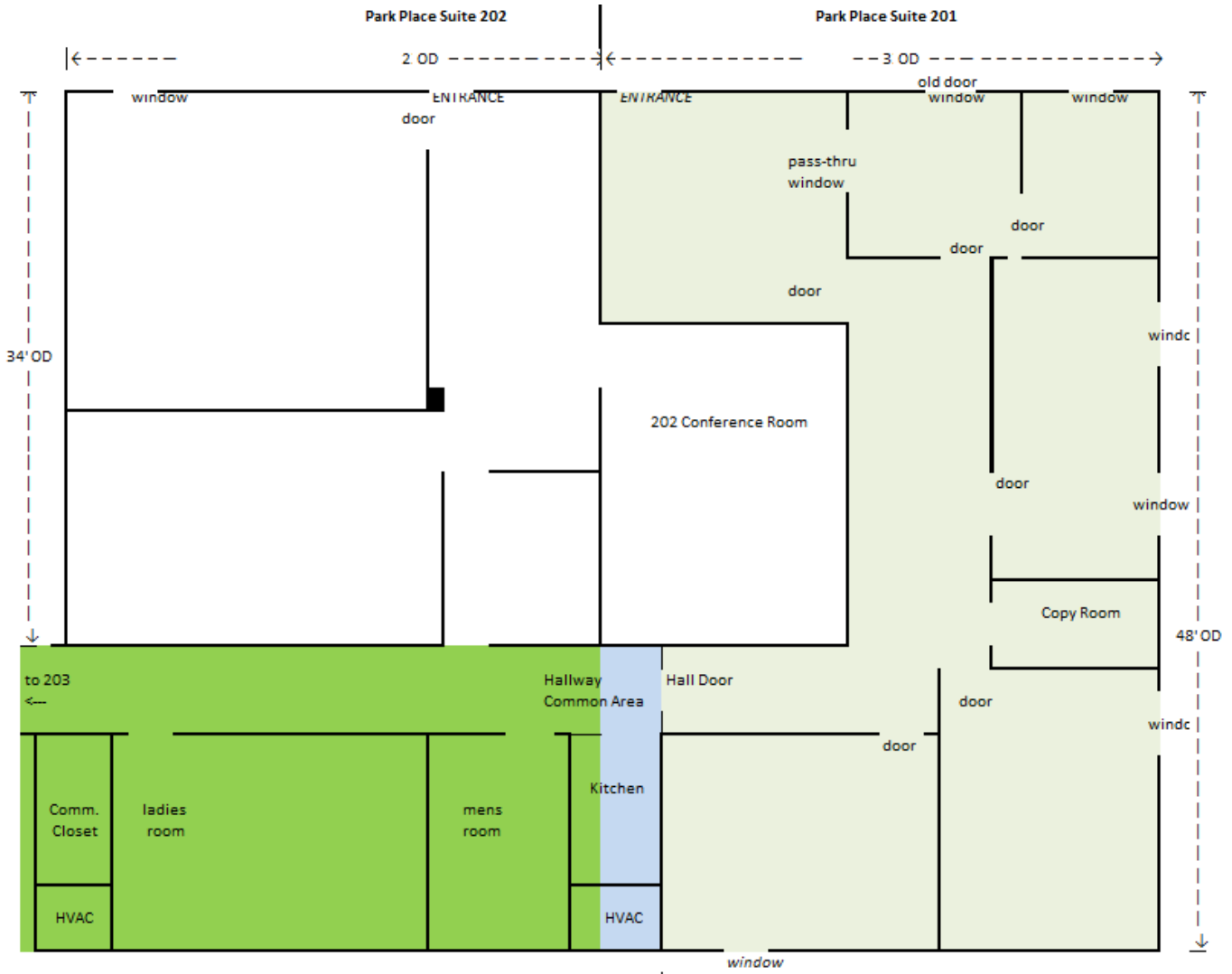
NO WARRANTY OR REPRESENTATION, EXPRESS OR IMPLIED, IS MADE AS TO THE ACCURACY OF THE INFORMATION CONTAINED HEREIN, AND THE SAME IS SUBMITTED SUBJECT TO ERRORS, OMISSIONS, CHANGE OF PRICE, RENTAL OR OTHER CONDITIONS, PRIOR SALE, LEASE OR FINANCING, OR WITHDRAWAL WITHOUT NOTICE, AND OF ANY SPECIAL LISTING CONDITIONS IMPOSED BY OUR PRINCIPALS NO WARRANTIES OR REPRESENTATIONS ARE MADE AS TO THE CONDITION OF THE PROPERTY OR ANY HAZARDS CONTAINED THEREIN ARE ANY TO BE IMPLIED. LICENSED IN LOUISIANA.

1700 City Farm Drive  
Baton Rouge, LA 70806  
225 295 0800 tel  
[latterblum.com](http://latterblum.com)

# Additional Photos



# Property Floor Plan



Suite 202 (new)	
main	23 x 34 = 78; OD
conf.rm. 13 x 15 = 195	
comm.area share= 192	(1/2 common area)
<b>Total =</b>	<b>1169 sq. ft.</b>
at \$11/year/ft = \$1072/month	

Suite 201 (new)	
33 x 48 = 158 OD	
plu: 1/2 com.area = 192 sq.f (1/2 common area)	
minus 3 x 16 = 48 sq. ft (part of common area incl. in OD dime)	
minus conf.rm. 13 x 15 = 195 sq.ft (202 conference room)	
<b>Total =</b>	<b>1533 sq. ft.</b>
at \$11/year/ft = \$1405/month	

# Location Maps

