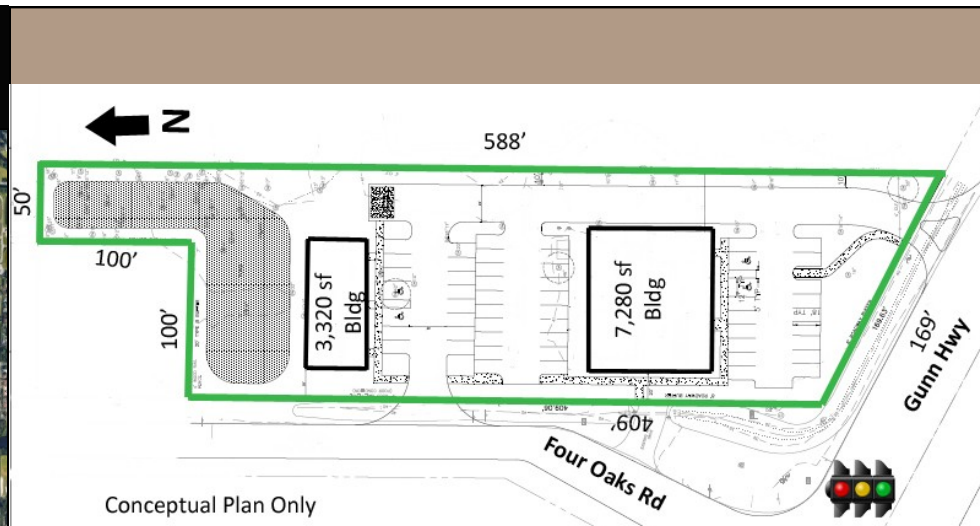
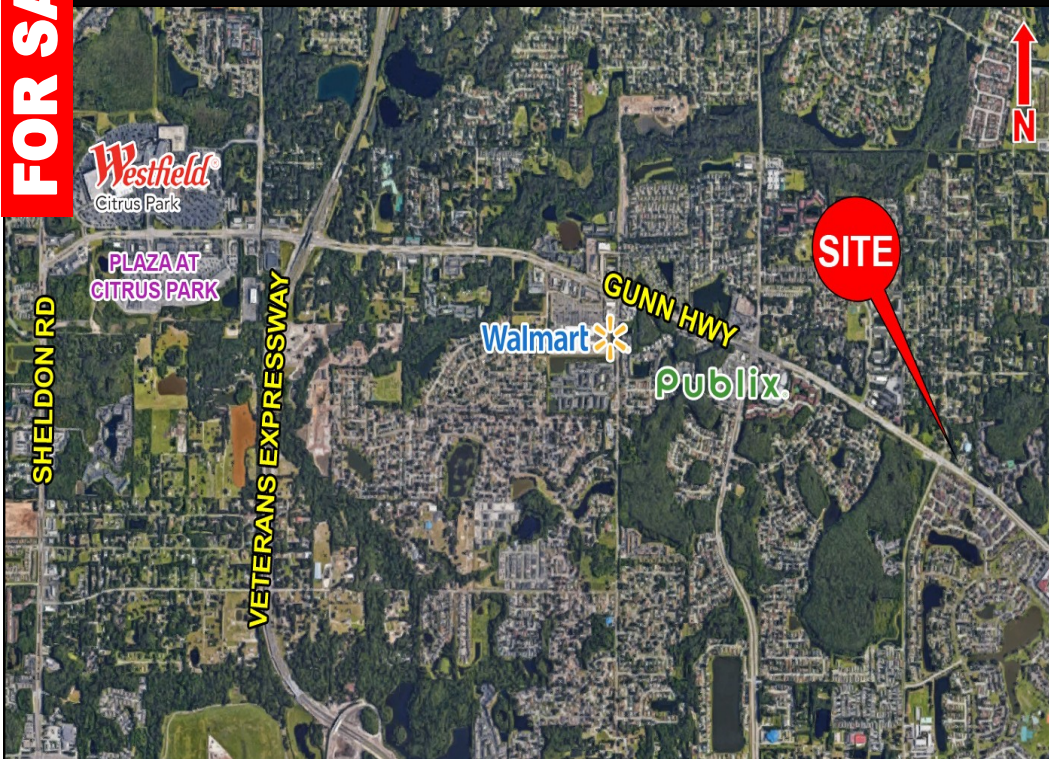


**FOR SALE**

THE  
**BOARDWALK**  
COMPANY



2017 Demographics	1 Mile	3 Mile	5 Mile
Population	15,725	95,093	259,458
Households	6,062	37,978	101,081
Average HH Income	\$71,068	\$77,219	\$72,611

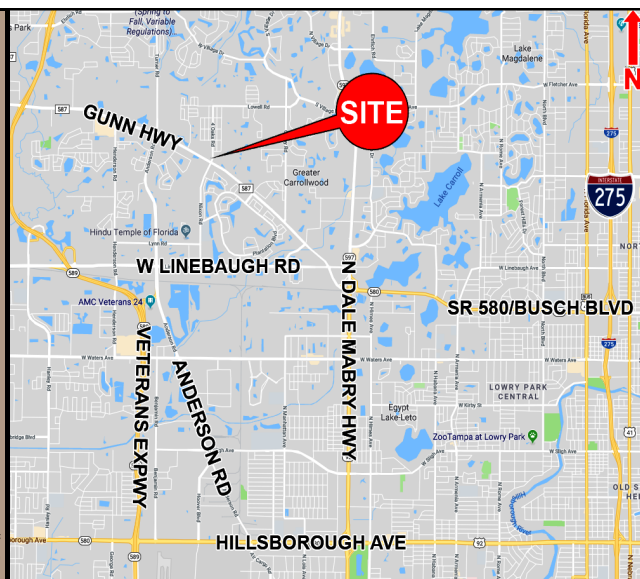
Source: U.S. Census Bureau, Esri

**Sale Price: \$680,000**

## DEVELOPMENT OPPORTUNITY • TAMPA, FL

Property #4166

- 1.66 acres (mol) -CG(R) Commercial, General (Restricted)
- Located at the signalized intersection of Gunn Highway and Four Oaks Road
- Possessing approximately 169 feet of Gunn Highway road footage, along with approximately 400 feet of frontage along Four Oaks Road
- Traffic counts of 29,500 vehicles per day along Gunn Highway per FDOT
- High visibility and exposure



For more information, contact:

**John Quattrochi**  
Broker

Office: 727.784.1007  
Fax: 727.784.1008  
Cell: 727.460.2201

[jquattrochi@boardwalkcompany.com](mailto:jquattrochi@boardwalkcompany.com)

31640 US Hwy 19 N, Suite 1  
Palm Harbor, FL 34684

[www.BoardwalkCompany.com](http://www.BoardwalkCompany.com)  
LICENSED REAL ESTATE BROKER

The information contained herein was collected from sources deemed to be reliable. The Boardwalk Company, its Agents and Sellers make no warranties or representation of any manner as to the accuracy, and the same is subject to misstatements of fact, errors or omissions, prior sale, change of price, terms, withdrawal from market without notice or other modifications. Buyer, tenants and/or all other parties shall verify all information independently.