

204 WEST 14TH STREET

BETWEEN SEVENTH & EIGHTH AVENUES | CHELSEA

ksr
KASSIN SABBAGH REALTY



204 WEST 14TH STREET

BETWEEN SEVENTH & EIGHTH AVENUES | CHELSEA

SIZE

Ground Floor

1,150 SF

Basement

800 SF

FRONTAGE

45'

CEILING HEIGHT

12'

ASKING RENT

Upon Request

POSSESSION

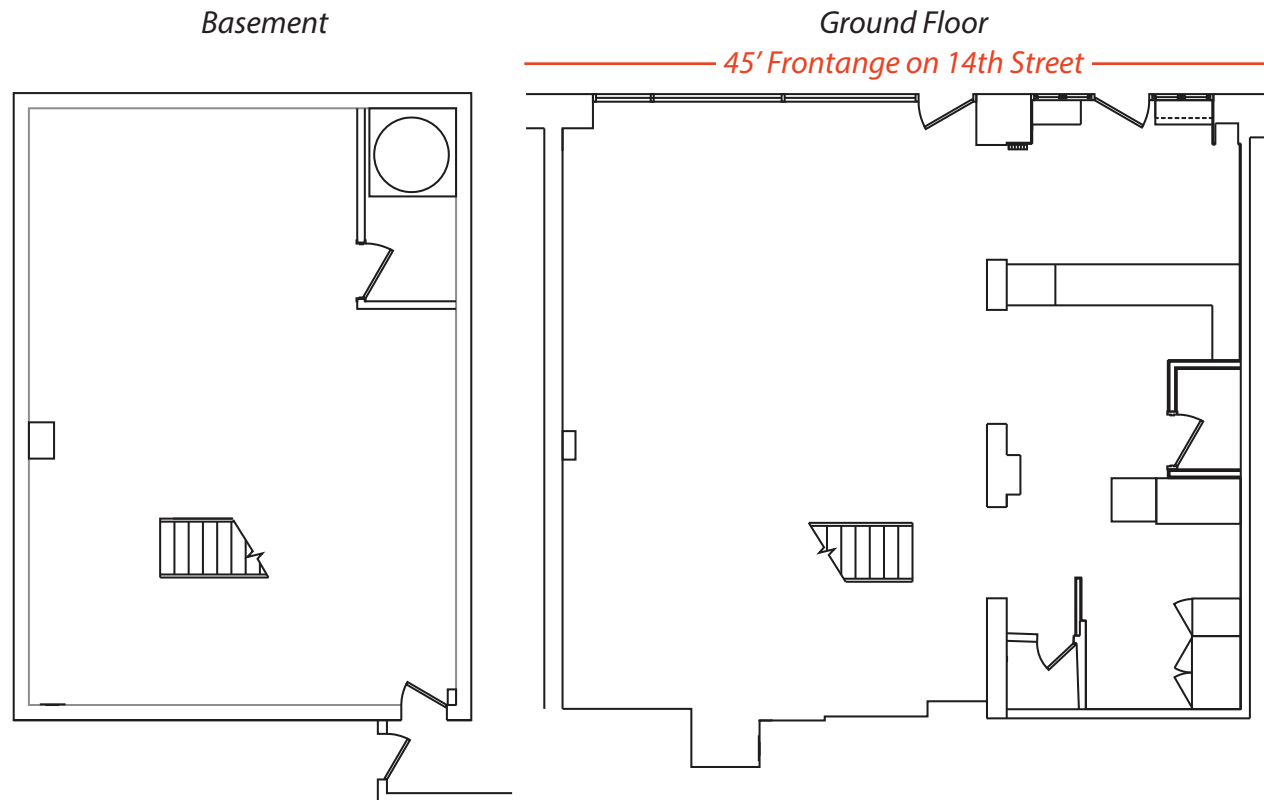
Immediate

TRANSPORTATION

1 2 3 A C E F M L

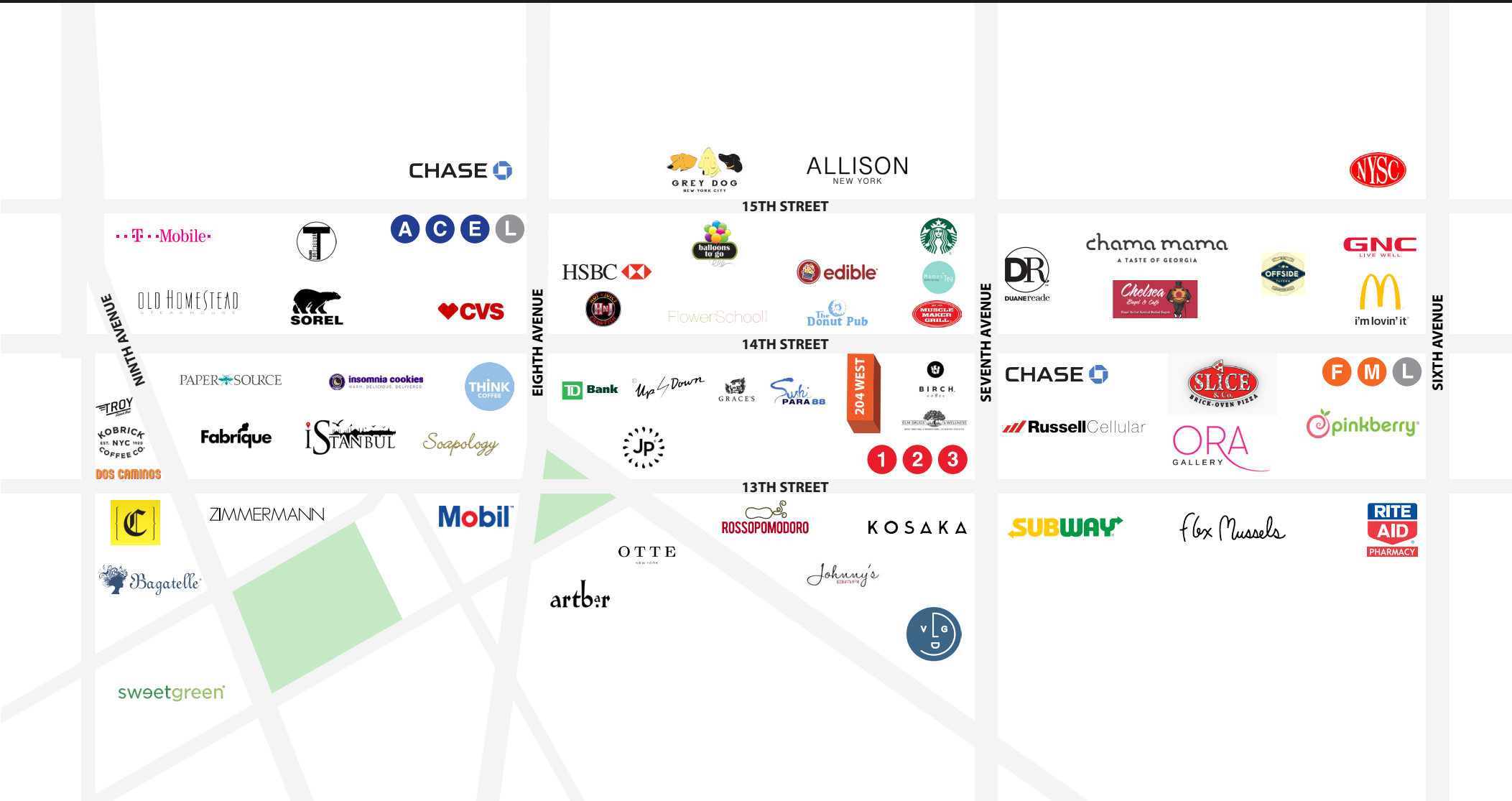
COMMENTS

- Gas & ventilation in place
- Formerly Dirty Bird (both window bays)
- Fully built out turnkey restaurant with HVAC, vent and hood
- Walk in box in the basement
- Steps away from the 14th Street station



204 WEST 14TH STREET

BETWEEN SEVENTH & EIGHTH AVENUES | CHELSEA



KASSIN SABBAGH REALTY
 1385 Broadway 22nd floor
 New York, NY 10018
 (212) 417 - 9217
 www.ksrny.com

ALBERT MANOPLA
 AManopla@ksrny.com
212.380.8369

MAYER GHONOJA
 MGhonoja@ksrny.com
347.409.8355

JACK KHASKI
 JackK@ksrny.com
917.355.0559

CONTACT OUR BROKER(S) FOR MORE INFORMATION