



LOGISTICS FACILITY BUILDING

FOR LEASE

# LOGISTICS FACILITY CLOSE TO NJ TURNPIKE

2382 Route 130 North, South Brunswick, NJ 08810

*For More Information, Contact*

**CHARLES T. KAVANAGH**

*Executive Vice President*  
ctkavanagh@blauberg.com  
973.379.6644 x113



830 Morris Turnpike, Suite 201, Short Hills, NJ 07078

[www.blauberg.com](http://www.blauberg.com)

# LOGISTICS FACILITY CLOSE TO NJ TURNPIKE

2382 Route 130 North, South Brunswick, NJ 08810



## PROPERTY DESCRIPTION

Truck/Trailer Logistics Facility

## LOCATION DESCRIPTION

Approx. 2.5 Miles to NJ Turnpike

## OFFERING SUMMARY

Lease Rate:	Negotiable
Available SF:	2,500 SF
Lot Size:	10 Acres
Building Size:	2,500 SF

## PROPERTY HIGHLIGHTS

- New Facilities Ideal for Used or New Truck, Trailer or Equipment Sales
- High Visibility Location for Expanding Truck Fleets
- 1,500-2,500 SF of New Office Space Available
- 20 High Visibility Highway Display Locations
- Potentially More Trailer Staging Sites Available
- Vehicle and Trailer Maintenance Service Available
- Call to Discuss Potential for Your Operation
- Located in the Heart of New Jersey's Prime Distribution Market

For More Information, Contact

**CHARLES T. KAVANAGH**

Executive Vice President

ctkavanagh@blauberg.com

973.379.6644 x113

830 Morris Turnpike  
Suite 201  
Short Hills, NJ 07078

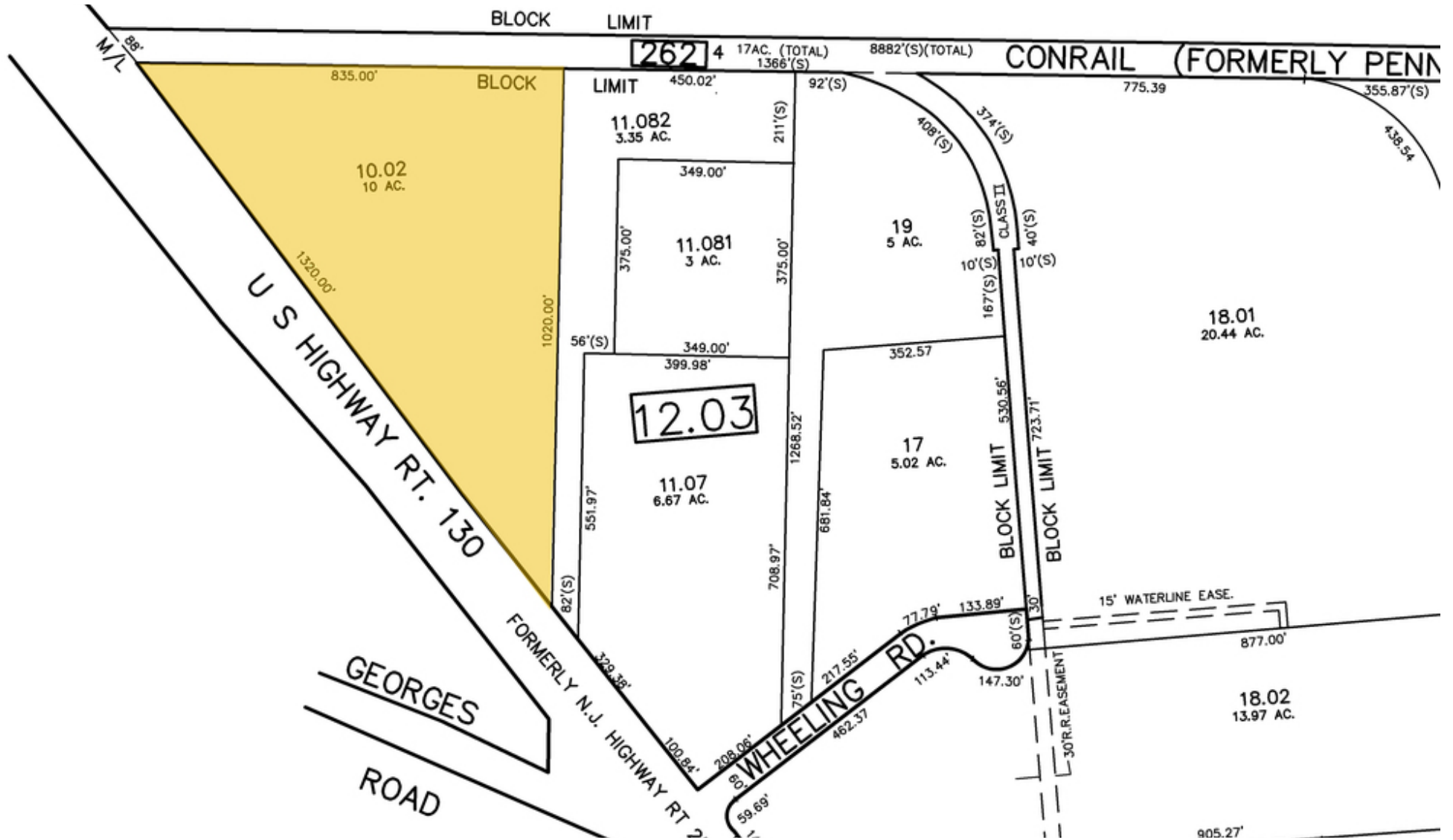
[www.blauberg.com](http://www.blauberg.com)



The information contained herein has been obtained from sources considered to be reliable, but no guarantee of its accuracy is made by this company. In addition, no representation is made respecting zoning, condition of title, dimensions, or any matters of a legal or environmental nature. Such matters should be referred to legal counsel for determination. Terms and conditions are subject to change without prior notice. Subject to errors and omissions.

# LOGISTICS FACILITY CLOSE TO NJ TURNPIKE

2382 Route 130 North, South Brunswick, NJ 08810



For More Information, Contact  
**CHARLES T. KAVANAGH**  
 Executive Vice President  
 ctkavanagh@blauberg.com  
 973.379.6644 x113

830 Morris Turnpike  
 Suite 201  
 Short Hills, NJ 07078

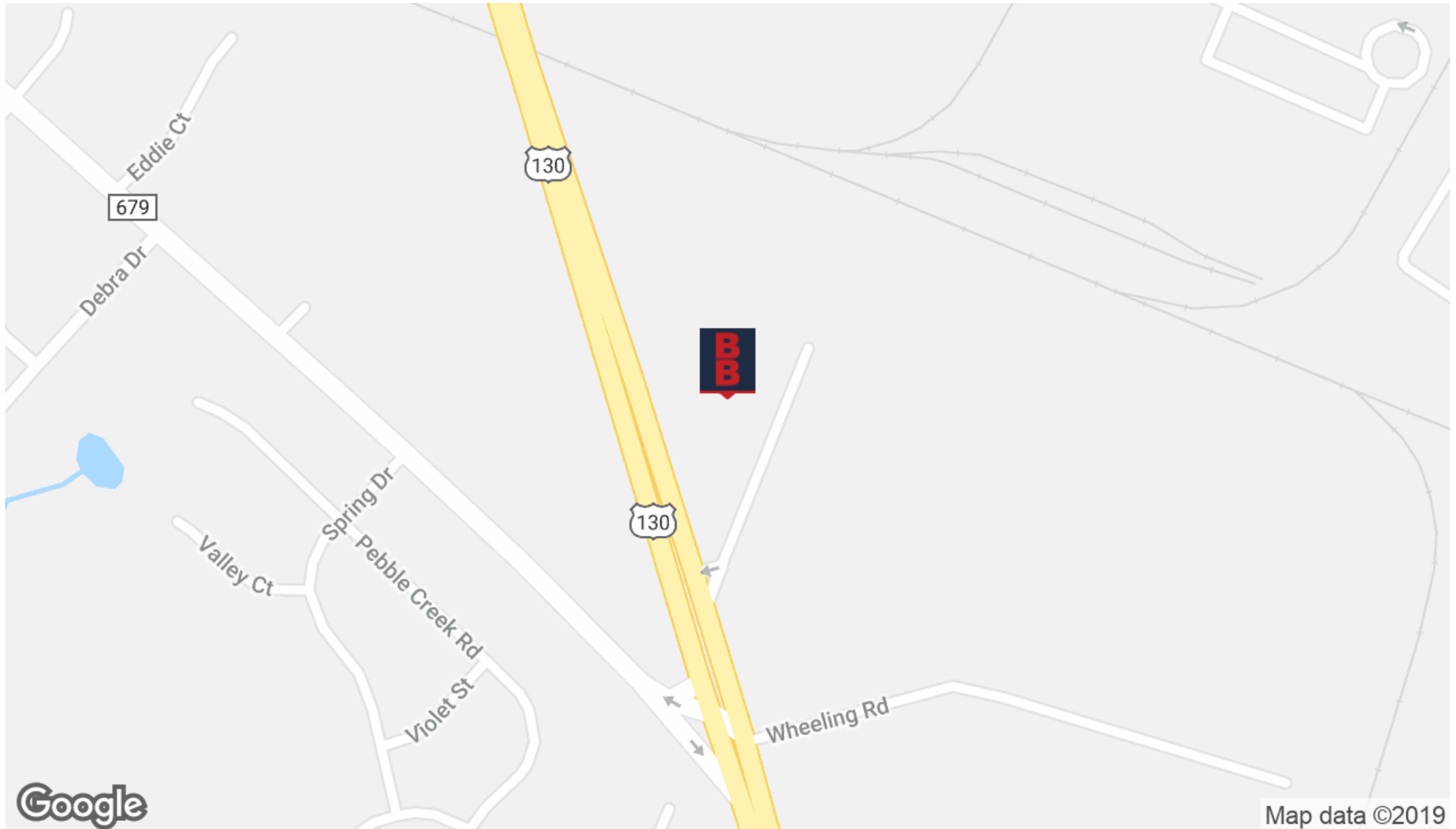
[www.blauberg.com](http://www.blauberg.com)



The information contained herein has been obtained from sources considered to be reliable, but no guarantee of its accuracy is made by this company. In addition, no representation is made respecting zoning, condition of title, dimensions, or any matters of a legal or environmental nature. Such matters should be referred to legal counsel for determination. Terms and conditions are subject to change without prior notice. Subject to errors and omissions.

# LOGISTICS FACILITY CLOSE TO NJ TURNPIKE

2382 Route 130 North, South Brunswick, NJ 08810



For More Information, Contact

**CHARLES T. KAVANAGH**

Executive Vice President

ctkavanagh@blauberg.com

973.379.6644 x113

830 Morris Turnpike  
Suite 201  
Short Hills, NJ 07078

[www.blauberg.com](http://www.blauberg.com)



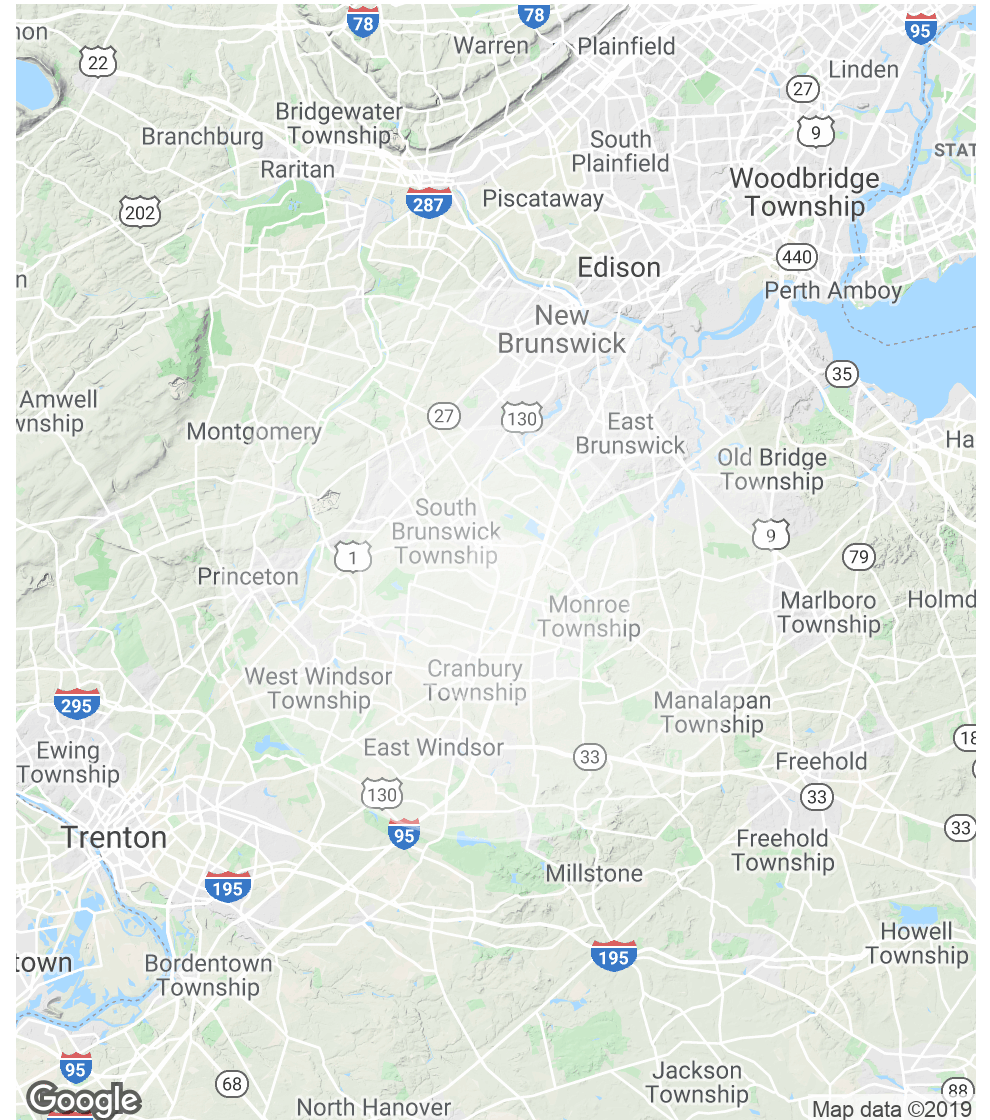
The information contained herein has been obtained from sources considered to be reliable, but no guarantee of its accuracy is made by this company. In addition, no representation is made respecting zoning, condition of title, dimensions, or any matters of a legal or environmental nature. Such matters should be referred to legal counsel for determination. Terms and conditions are subject to change without prior notice. Subject to errors and omissions.

# LOGISTICS FACILITY CLOSE TO NJ TURNPIKE

2382 Route 130 North, South Brunswick, NJ 08810

POPULATION	1 MILE	5 MILES	10 MILES
Total Population	1,597	83,090	485,304
Median age	37.3	44.5	38.1
Median age (Male)	37.4	44.4	37.5
Median age (Female)	37.1	44.7	38.6
HOUSEHOLDS & INCOME	1 MILE	5 MILES	10 MILES
Total households	496	33,094	172,278
# of persons per HH	3.2	2.5	2.8
Average HH income	\$128,748	\$99,505	\$102,506
Average house value	\$396,077	\$357,805	\$403,636

\* Demographic data derived from 2010 US Census



For More Information, Contact  
**CHARLES T. KAVANAGH**

Executive Vice President  
ctkavanagh@blauberg.com  
973.379.6644 x113

830 Morris Turnpike  
Suite 201  
Short Hills, NJ 07078

[www.blauberg.com](http://www.blauberg.com)



The information contained herein has been obtained from sources considered to be reliable, but no guarantee of its accuracy is made by this company. In addition, no representation is made respecting zoning, condition of title, dimensions, or any matters of a legal or environmental nature. Such matters should be referred to legal counsel for determination. Terms and conditions are subject to change without prior notice. Subject to errors and omissions.

# LOGISTICS FACILITY CLOSE TO NJ TURNPIKE

2382 Route 130 North, South Brunswick, NJ 08810



## CHARLES T. KAVANAGH

Executive Vice President

[ctkavanagh@blauberg.com](mailto:ctkavanagh@blauberg.com)

**Direct:** 973.379.6644 x113 | **Cell:** 908.209.8118

## PROFESSIONAL BACKGROUND

Mr. Kavanagh was initially a member of the Berg Enterprises Industrial Division prior to its acquisition by the American Can Company. During its transformation to a national financial services firm, Berg was merged with its sister company the Leslie Blau Company in 1974. He has more than 40 years experience in industrial and commercial real estate and had worked for period in the construction industry prior to starting his real estate career. At Blau & Berg, Mr. Kavanagh as represented many clients in site selection, acquisition, disposition and new construction projects, in and outside of New Jersey.

## EDUCATION

A graduate of St Peter's College, he attended a joint JD/MBA program at Rutgers University and was admitted to the New Jersey Bar in 1974. In 1990 Mr. Kavanagh was one of a small group of brokers who acquired the assets of the Blau & Berg Company from Primerica/Margaretten (successor to American Can Co) and is currently a principal in the firm.

The principals of the Blau & Berg Company have been active in community service and Charles was a member of the Brielle Board of Education for ten years, eight years as President, and was Vice President of the Monmouth County School Boards Association. Additionally, he has for many years been active in fund raising for local Little League and Pop Warner organizations.

*For More Information, Contact*

**CHARLES T. KAVANAGH**

*Executive Vice President*

[ctkavanagh@blauberg.com](mailto:ctkavanagh@blauberg.com)

973.379.6644 x113

830 Morris Turnpike  
Suite 201  
Short Hills, NJ 07078

[www.blauberg.com](http://www.blauberg.com)



The information contained herein has been obtained from sources considered to be reliable, but no guarantee of its accuracy is made by this company. In addition, no representation is made respecting zoning, condition of title, dimensions, or any matters of a legal or environmental nature. Such matters should be referred to legal counsel for determination. Terms and conditions are subject to change without prior notice. Subject to errors and omissions.