

GROUND BROKEN MAY 1ST!



Clinton Keith Village Shopping Center

FOR LEASE | 2 Drive Thru Pads
2 Shop Buildings Available

Up to 13,000 contiguous square feet

Contact:

Peter Orth
Senior Vice President
+1 858 677 5382
peter.orth@colliers.com
Lic. No. 00448913

Colliers International
4350 La Jolla Village Dr. | Suite 500
San Diego, CA 92122
P: +1 858 455 1515

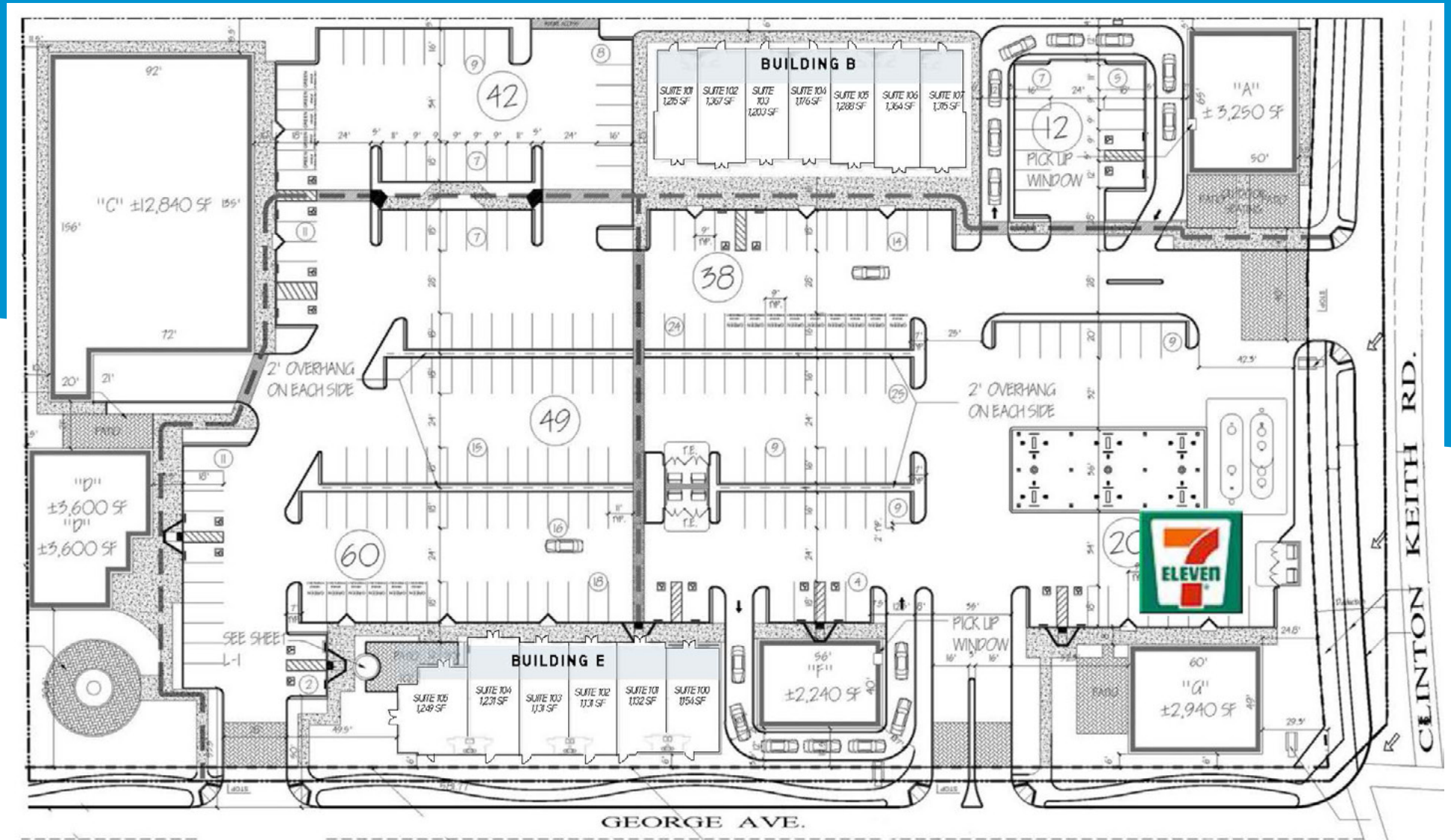


Accelerating success.

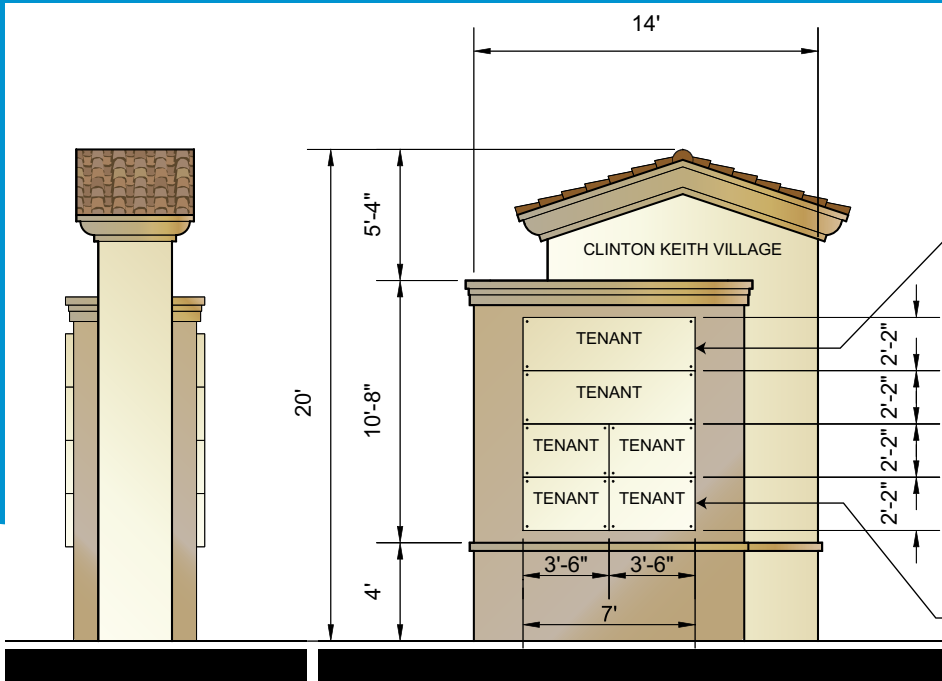
Neighboring Tenants



Site Plan



Project Features



- ▶ Seeking food, retail, financial, fast food, automotive and shop tenants
- ▶ Drive-thru Pads and in-line space available
- ▶ Large monument signage
- ▶ High growth residential area with many new residential developments
- ▶ Excellent visibility to signalized intersection
- ▶ Offers street exposure, strong demographics and traffic counts
- ▶ Located within a major retail area, across the street from Oak Creek Village Marketplace (Albertson's Sav-On, McDonald's & Starbucks)
- ▶ Close proximity to Inland Valley Medical Center
- ▶ Located on Clinton Keith Road, just east of the I-15, on the signalized intersection at George Avenue. Clinton Keith Road is a major thoroughfare, now completed to French Valley.

Location Overview



FOR LEASE | Clinton Keith Village Shopping Center, Wildomar, CA



Contact:

[Peter Orth](#)

Senior Vice President

+1 858 677 5382

peter.orth@colliers.com

Lic. No. 00448913

colliers.com/sandiego

This document has been prepared by Colliers International for advertising and general information only. Colliers International makes no guarantees, representations or warranties of any kind, expressed or implied, regarding the information including, but not limited to, warranties of content, accuracy and reliability. Any interested party should undertake their own inquiries as to the accuracy of the information. Colliers International excludes unequivocally all inferred or implied terms, conditions and warranties arising out of this document and excludes all liability for loss and damages arising there from. This publication is the copyrighted property of Colliers International and/or its licensor(s). ©2018. All rights reserved.

Colliers International
4350 La Jolla Village Dr. | Suite 500
San Diego, CA 92122
P: +1 858 455 1515
Lic. No. 01908588



Accelerating success.