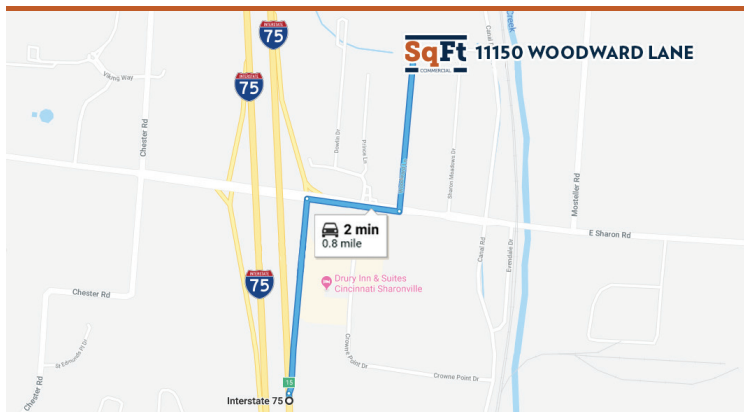




11150 WOODWARD LANE CINCINNATI, OH 45241 - HAMILTON COUNTY

AVAILABLE FOR LEASE



PROPERTY HIGHLIGHTS

 **6,000 SqFt (60'x100') Total SqFt**

- Freestanding industrial/office building located in City of Sharonville
- Immediate highway access to I-275/75
- \$7.00/SqFt NNN

Total SqFt:	6,000 SqFt (60'x100')
Warehouse SqFt:	1,800 (60'x30')
Office SqFt:	4,200 (60'x70')
Clear Height:	11'-13'
Year Built:	1990's
Type Construction:	Masonry and metal
Lighting:	Fluorescent
Column Spacing:	Clear span
Dock doors:	One (1) - 10'x10'

Drive-in doors:	One (1) - 10'x10'
Sprinkler:	Yes; Wet system
Electrical Service:	200amp/120volt/single-phase
Heat:	Natural gas
Roof:	Metal
Truck court:	30'
Parking Lot:	10+ spaces and expansion parking available
Restrooms:	One (1) set of men's/women's

INFO@SQFTCOMMERCIAL.COM | (513) 843-1600 | SQFTCOMMERCIAL.COM

11150 WOODWARD LANE
CINCINNATI, OH

ADDITIONAL PHOTOS



INFO@SQFTCOMMERCIAL.COM | (513) 843-1600 | SQFTCOMMERCIAL.COM



Rod MacEachen
(513) 675-5764
Rod@SqFtCommercial.com

Roddy MacEachen
(513) 739-3985
Roddy@SqFtCommercial.com

Jared Wagoner
(812) 890-1768
Jared@SqFtCommercial.com

11150 WOODWARD LANE

CINCINNATI, OH

AERIAL VIEW



INFO@SQFTCOMMERCIAL.COM | (513) 843-1600 | SQFTCOMMERCIAL.COM



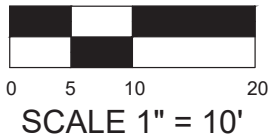
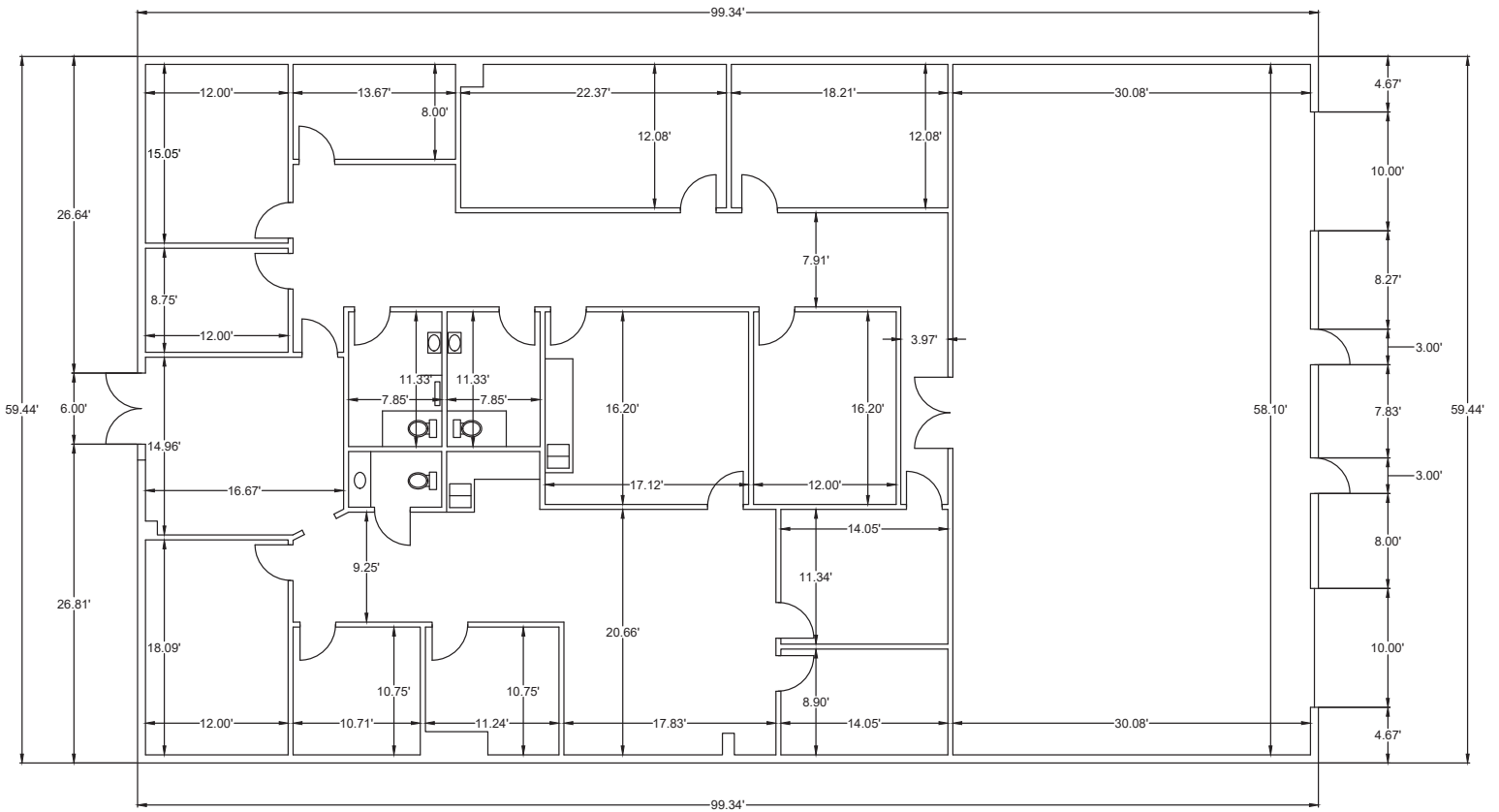
Rod MacEachen
(513) 675-5764
Rod@SqFtCommercial.com

Roddy MacEachen
(513) 739-3985
Roddy@SqFtCommercial.com

Jared Wagoner
(812) 890-1768
Jared@SqFtCommercial.com

1150 WOODWARD LANE CINCINNATI, OH

FLOOR PLAN



INFO@SQFTCOMMERCIAL.COM | (513) 843-1600 | SQFTCOMMERCIAL.COM



Rod MacEachen
(513) 675-5764
Rod@SqFtCommercial.com

Roddy MacEachen
(513) 739-3985
Roddy@SqFtCommercial.com

Jared Wagoner
(812) 890-1768
Jared@SqFtCommercial.com