



**PANDEMIC  
SPECIAL  
PRICES**

# **MEDICAL/PROFESSIONAL OFFICES**

25 North 14th Street • San Jose, California

The information contained herein has been obtained from sources we deem reliable. We cannot, however, assume responsibility for its accuracy.

# 700± SF to 10,500± SF - FOR LEASE

## 25 N. 14th Street San Jose, CA

### Available Suites

<b>Lower Level:</b>	<b>Ste 55</b>	<b>3,855 SF</b>
<b>Lower Level</b>	<b>Ste 60</b>	<b>960 SF</b>
<b>Lower Level</b>	<b>Ste 65</b>	<b>2,521 SF</b>
<b>Lower Level</b>	<b>Ste 70</b>	<b>1,434 SF</b>
<b>Lower Level</b>	<b>Ste 20</b>	<b>2,166 SF</b>
<b>4th Floor</b>	<b>Ste 450</b>	<b>719 SF</b>
<b>6th Floor</b>	<b>Ste 670</b>	<b>744 SF</b>
<b>8th Floor</b>	<b>Ste 870</b>	<b>1,114 SF</b>
<b>9th Floor</b>	<b>Ste 900</b>	<b>1,967 SF</b>
	<b>Ste 906</b>	<b>1,133 SF</b>
	<b>Ste 930</b>	<b>942 SF</b>

- Central location with convenient access to Hwys. 101, 280, 87, and public transportation.
- Minutes from Downtown, City Hall, and San Jose International Airport.
- Ten Story Class B Building with three levels of onsite covered parking.
- Available office suites range from 700± RSF to 10,500± RSF.
- New paint and carpet, with additional TI allowances available
- Property Manager on Site
- 24 Hour Access
- Close proximity to amenities.
- Call to Tour and For Pricing

The information contained herein has been obtained from sources we deem reliable. We cannot, however, assume responsibility for its accuracy.



COMMERCIAL BROKERAGE | INVESTMENT SALES | PROPERTY MANAGEMENT

8 No. San Pedro Street, Suite 300 San Jose, California 95110

Tel: 408.378.5900 [www.moinc.net](http://www.moinc.net)

Silverstone  
Commercial



Month-to-Month Office Leases Available

**25 N. 14th Street  
San Jose, CA**

**Available Suites**

<b>Suite 160 ....2,259 SF</b>	<b>Suite 820 ....1,150 SF</b>
<b>Suite 440 .....859 SF</b>	<b>Suite 840 ....1,048 SF</b>
<b>Suite 550 ....1,530 SF</b>	<b>Suite 860 ....1,048 SF</b>
<b>Suite 560 ....1,236 SF</b>	<b>Suite 880 ...2,359 SF</b>
<b>Suite 630 .....850 SF</b>	<b>Suite 890 ....1,257 SF</b>
<b>Suite 650 .....466 SF</b>	<b>Suite 920 ....1,287 SF</b>
<b>Suite 740 .....851 SF</b>	<b>Suite 940 ..... 842 SF</b>
<b>Suite 780 ....1,212 SF</b>	<b>Suite 950 ....1,051 SF</b>
<b>Suite 790 ....1,041 SF</b>	

The information contained herein has been obtained from sources we deem reliable. We cannot, however, assume responsibility for its accuracy.



**COMMERCIAL BROKERAGE | INVESTMENT SALES | PROPERTY MANAGEMENT**

8 No. San Pedro Street, Suite 300 San Jose, California 95110

Tel: 408.378.5900 [www.moinc.net](http://www.moinc.net)

**Silverstone  
Commercial**

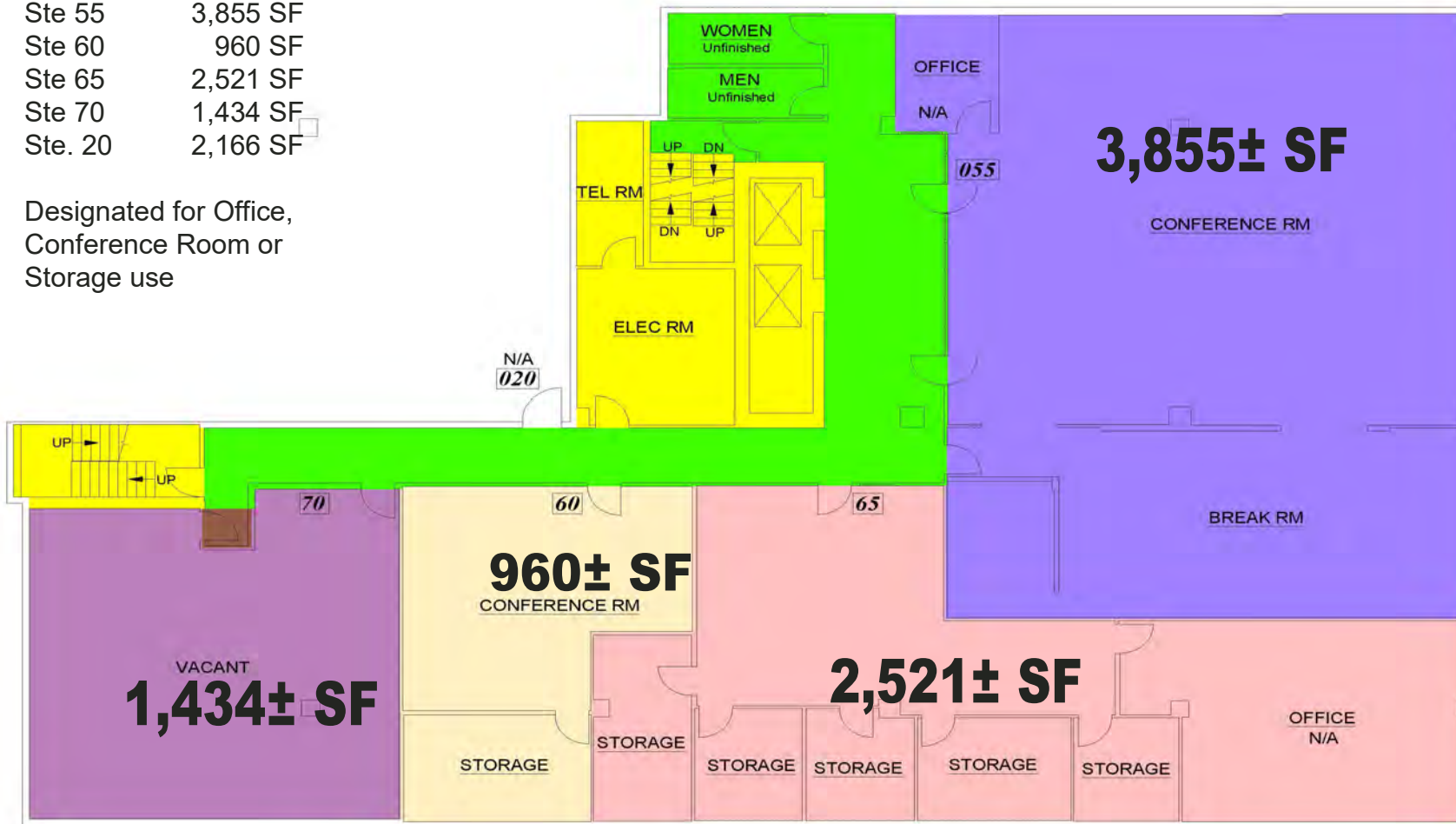


# 25 N. 14th Street San Jose, CA

## Lower Level Office Suites:

Ste 55	3,855 SF
Ste 60	960 SF
Ste 65	2,521 SF
Ste 70	1,434 SF
Ste. 20	2,166 SF

Designated for Office,  
Conference Room or  
Storage use



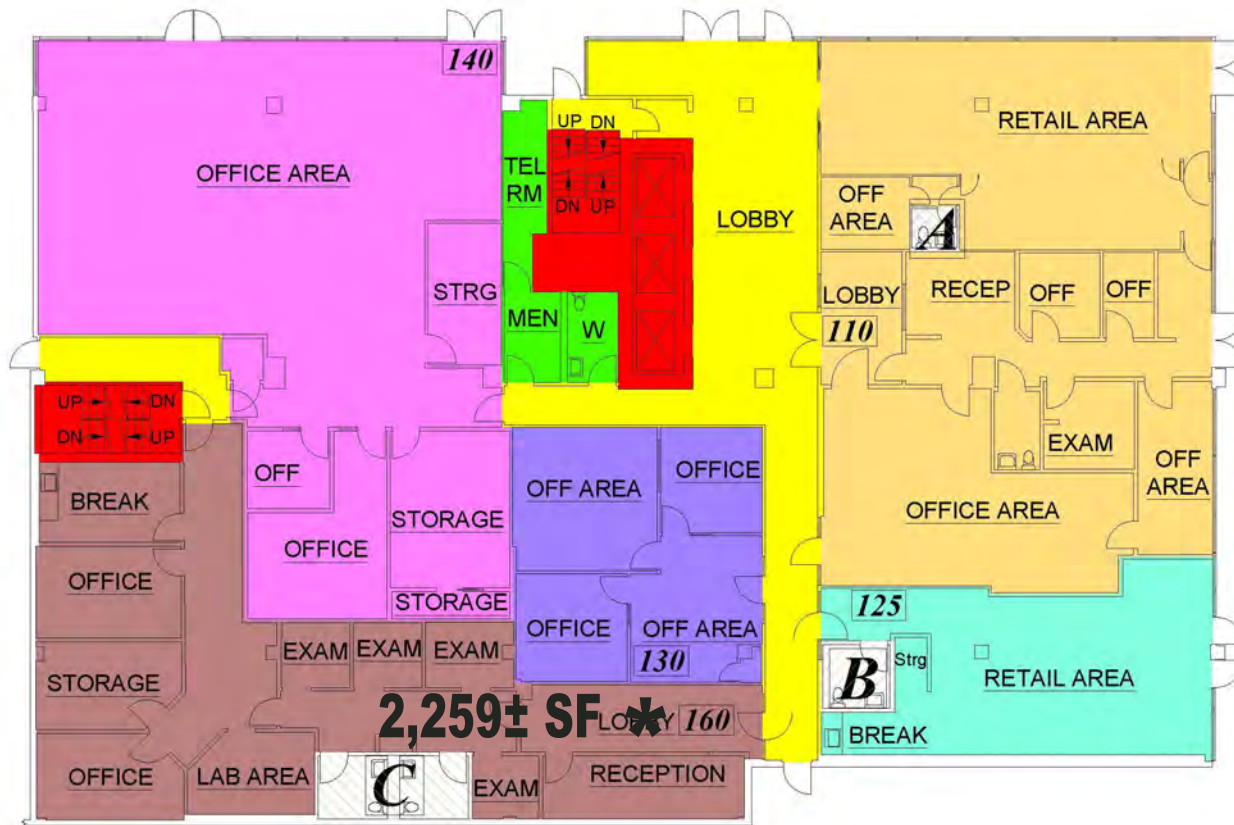
Suite #	Occup. Area	Rentable	Capped R.	Capped LF	% of Tot. R.
55	2,965.9	3,855.5	3,855.5	1.2999	4.9
60	738.7	960.3	960.3	1.2999	1.2
65	1,839.2	2,520.8	2,520.8	1.2999	3.2
70	1,103.2	1,434.1	1,434.1	1.2999	1.8

The information contained herein has been obtained from sources we deem reliable. We cannot, however, assume responsibility for its accuracy.

# 25 N. 14th Street San Jose, CA

## 1st Floor

Suite 160\* 2,259 SF (Mo. To Mo.)



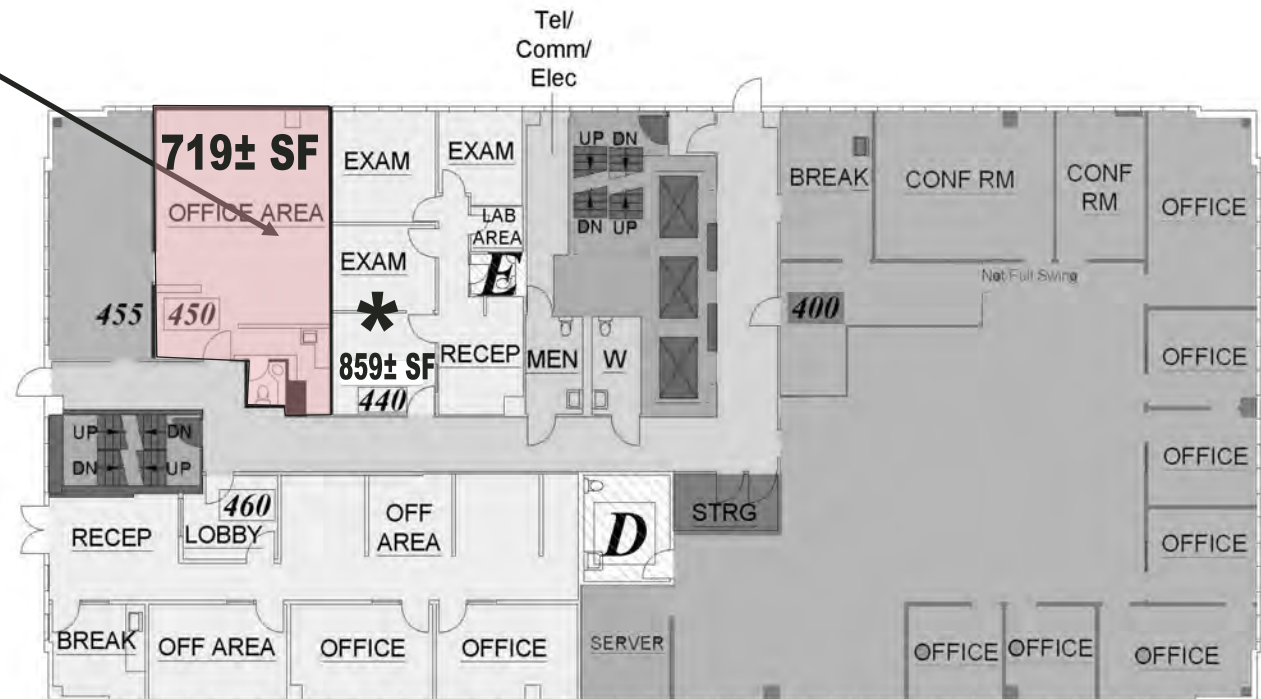
The information contained herein has been obtained from sources we deem reliable. We cannot, however, assume responsibility for its accuracy.

# 25 N. 14th Street San Jose, CA

## 4th Floor

Suite 450— 719± SF

Suite 440\* - 859± SF (Mo. To Mo.)



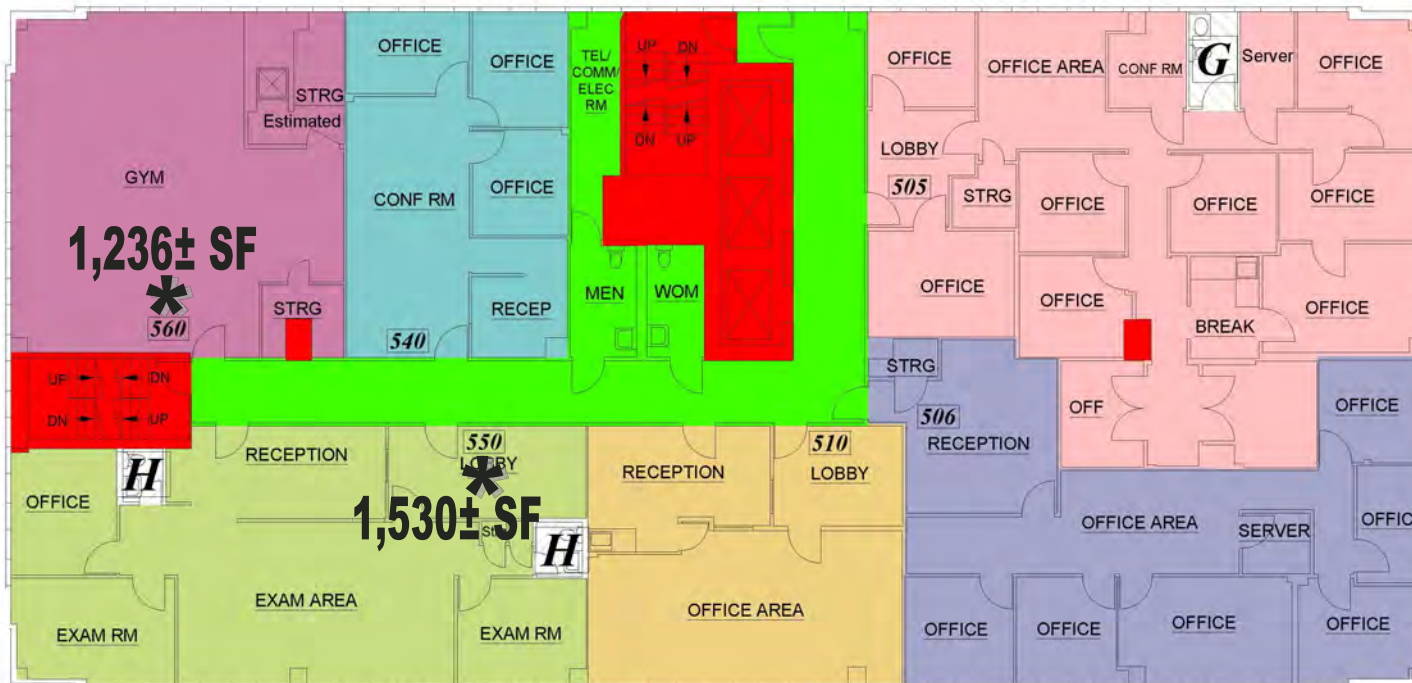
The information contained herein has been obtained from sources we deem reliable. We cannot, however, assume responsibility for its accuracy.

# 25 N. 14th Street San Jose, CA

## 5th Floor

Suite 550\* 1,530± SF (Mo. to Mo.)

Suite 560\* 1,236± SF (Mo. to Mo.)



The information contained herein has been obtained from sources we deem reliable. We cannot, however, assume responsibility for its accuracy.

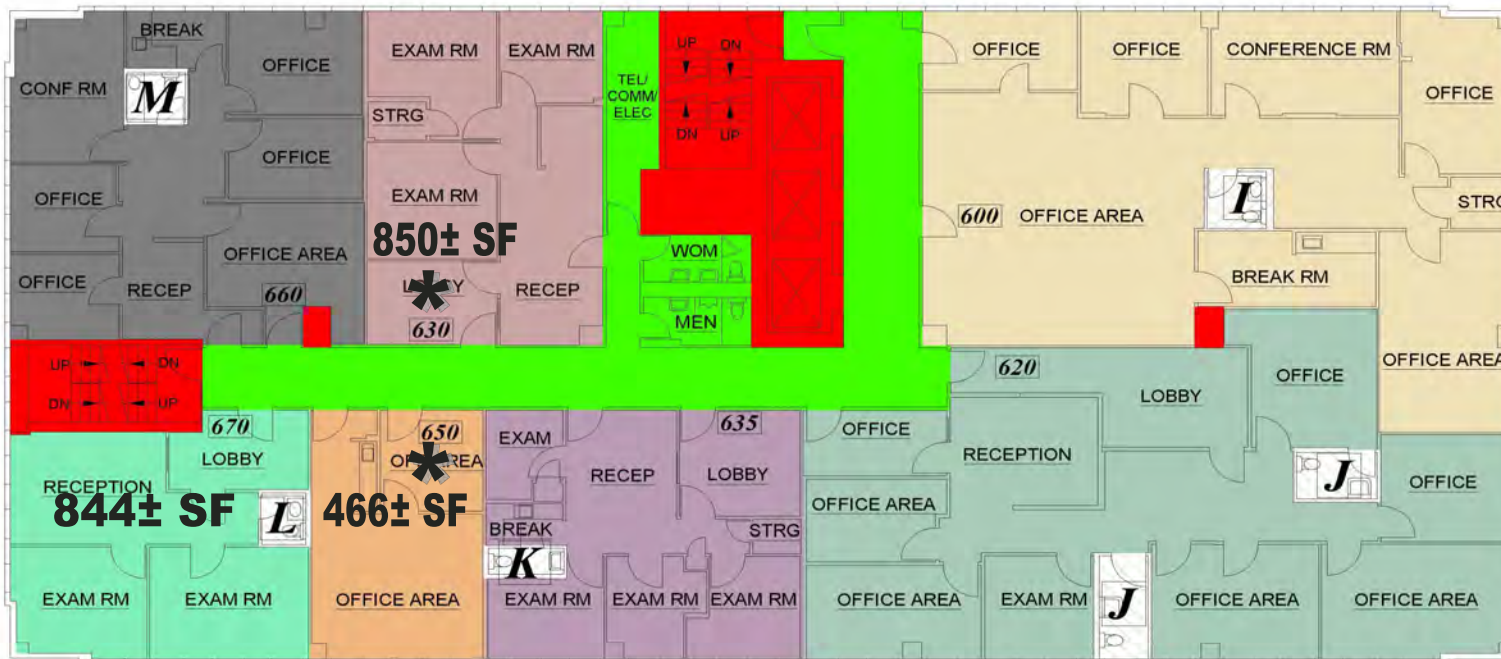
# 25 N. 14th Street San Jose, CA

## 6th Floor

Suite 630\* 850± SF (Mo. To Mo.)

Suite 650\* 466± SF (Mo. To Mo.)

Suite 670 744± SF



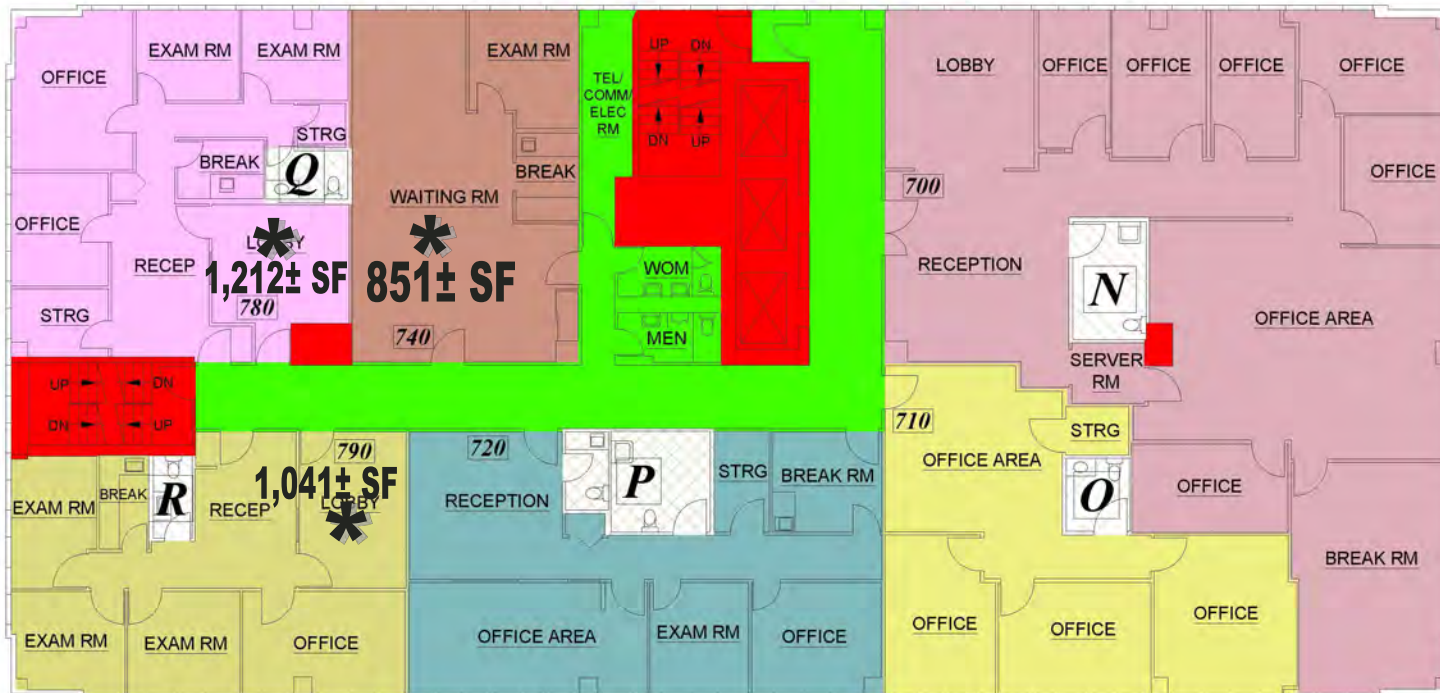
Suite #	Occup. Area	Rentable	Capped R.	Capped LF	% of Tot. R.
600	1,671.6	2,171.6	2,171.6	1,2991	2.8
620	1,644.1	2,191.2	2,191.2	1,3327	2.8
630	850.0	850.8	850.8	1,2775	1.1
635	842.4	844.0	844.0	1,3140	1.1
650	364.6	465.7	465.7	1,2775	0.8
660	938.7	1,224.3	1,224.3	1,3043	1.6
670	559.1	744.3	744.3	1,3311	1.0



# 25 N. 14th Street San Jose, CA

## 7th Floor

Suite 740*	851 SF (Mo. to Mo.)
Suite 780*	1,212 SF (Mo. to Mo.)
Suite 790*	1,041 SF (Mo. to Mo.)



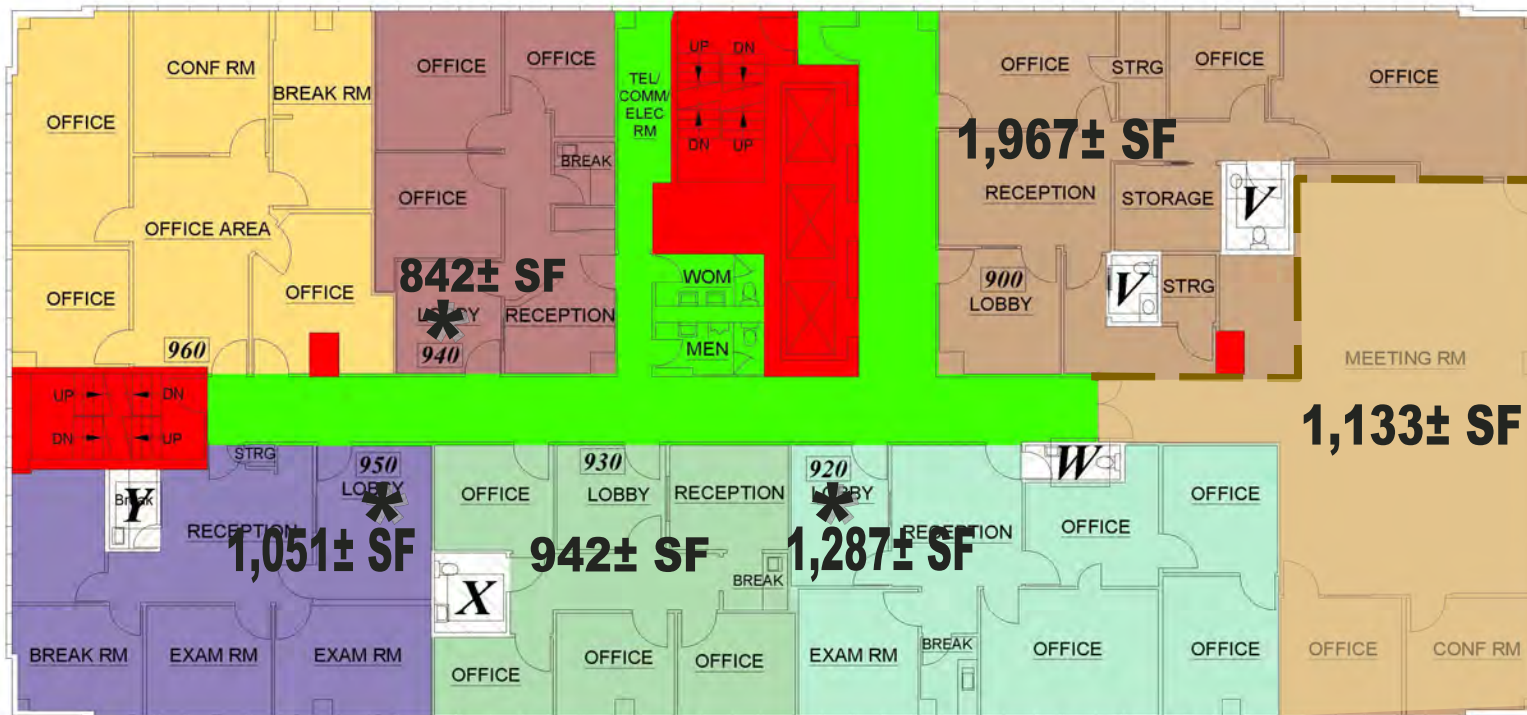
The information contained herein has been obtained from sources we deem reliable. We cannot, however, assume responsibility for its accuracy.



# 25 N. 14th Street San Jose, CA

## 9th Floor

Suite 900	1,967 SF	} Suites can be combined for 3,100± SF
Suite 906	1,133 SF	
Suite 920*	1,287 SF	
Suite 930	942 SF	
Suite 940*	842 SF	
Suite 950*	1,051 SF	



The information contained herein has been obtained from sources we deem reliable. We cannot, however, assume responsibility for its accuracy.

# 25 N. 14th Street San Jose, CA

Interior and Exterior Upgrades Underway



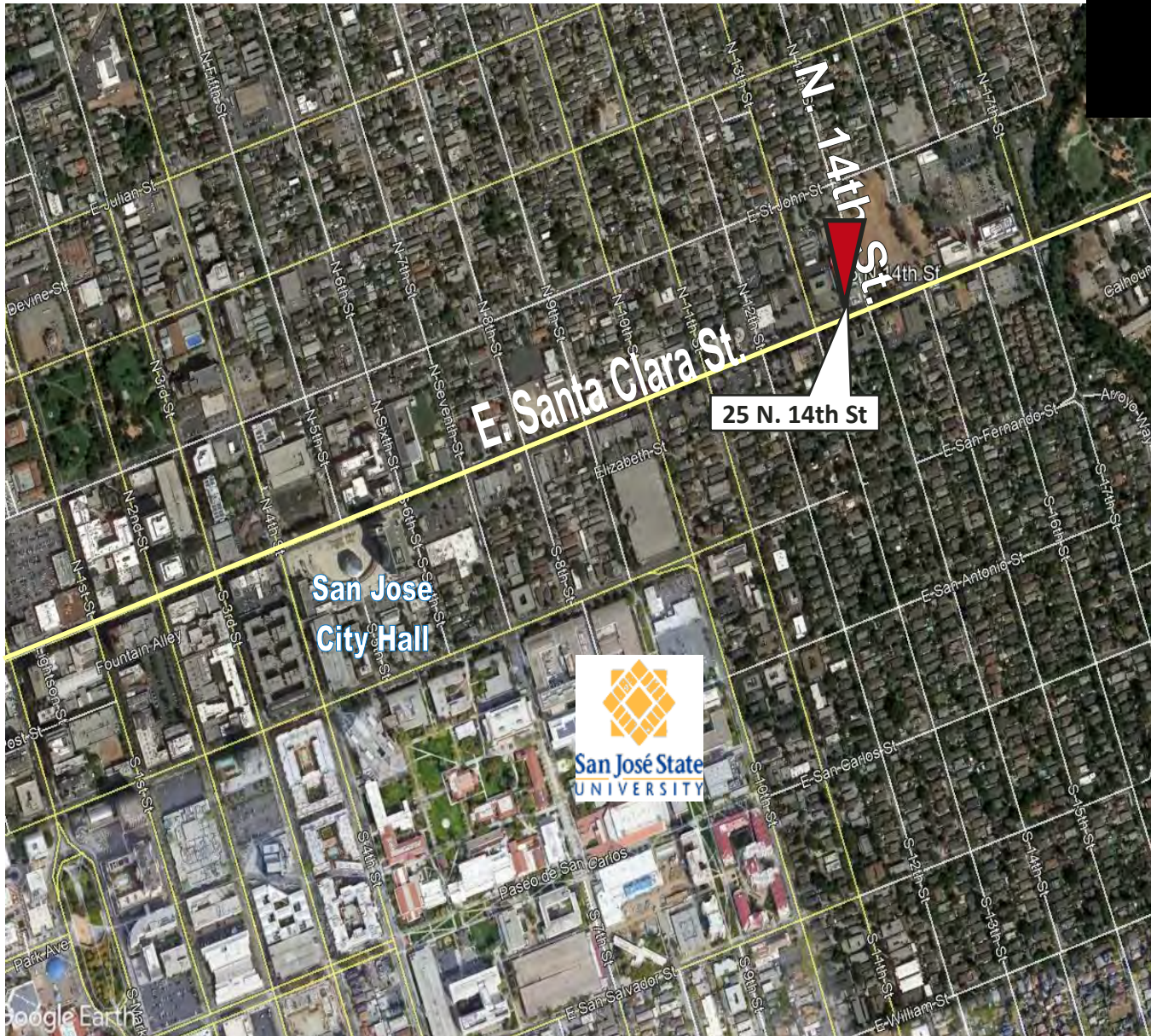
The information contained herein has been obtained from sources we deem reliable. We cannot, however, assume responsibility for its accuracy.

# 25 N. 14th Street San Jose, CA



The information contained herein has been obtained from sources we deem reliable. We cannot, however, assume responsibility for its accuracy.

# 25 N. 14th Street San Jose, CA



for more information contact:

**Matt Perez**  
**Meacham/Oppenheimer**

Lic. #02017798

**mperez@moinc.net**  
**(408) 477-2516**

**Michael Joseph**  
**Silverstone Commercial**

Lic. #01382905

**mjoseph@**  
**silverstonecommercial.com**  
**(408) 375-5572**

The information contained herein has been obtained from sources we deem reliable. We cannot, however, assume responsibility for its accuracy.



COMMERCIAL BROKERAGE | INVESTMENT SALES | PROPERTY MANAGEMENT

8 No. San Pedro Street, Suite 300 San Jose, California 95110

Tel: 408.378.5900 [www.moinc.net](http://www.moinc.net)

Silverstone  
Commercial

