



For Sale

±106.7 AC

© 2019 Pictometry

CONTACT BROKERS FOR MORE INFORMATION:

# Bluff Road

Hopkins, South Carolina

**Patrick Palmer**

+1 803 556 3340

ppalmer@naicolumbia.com

**Lee Bussell Jr**

+1 803 744 9865

Lbussell@naicolumbia.com

**Bobby Balboni**

+1 803 744 9846

bbalboni@naicolumbia.com

THE INFORMATION CONTAINED HEREIN HAS BEEN GIVEN TO US BY THE OWNER OF THE PROPERTY OR OTHER SOURCES WE DEEM RELIABLE. WE HAVE NO REASON TO DOUBT ITS ACCURACY, BUT WE DO NOT GUARANTEE IT. ALL INFORMATION SHOULD BE VERIFIED PRIOR TO PURCHASE OR LEASE.

**NAI**Columbia

807 Gervais Street, Suite 200  
Columbia, South Carolina 29201  
+1 803.254.0100  
[www.naicolumbia.com](http://www.naicolumbia.com)



## Bluff Road

Hopkins, South Carolina

### Property Features

- ± 106.7 acres for sale
- Wildlife includes deer, wild boar and turkey
- Drivable road system
- ± 890' frontage on Bluff Road
- ±13 miles from Downtown Columbia
- Myers Creek runs through the northeast corner of the property
- Sales price- \$425,000

For more information:

### Patrick Palmer, CCIM

+1 803 556 3340 • ppalmer@naicolumbia.com

### Lee Bussell Jr

+1 803 744 9865 • lbussell@naicolumbia.com

### Bobby Balboni

+1 803 744 9846 • bbalboni@naicolumbia.com





For Sale

# Land

106.7 Acres | \$3983.13 / AC



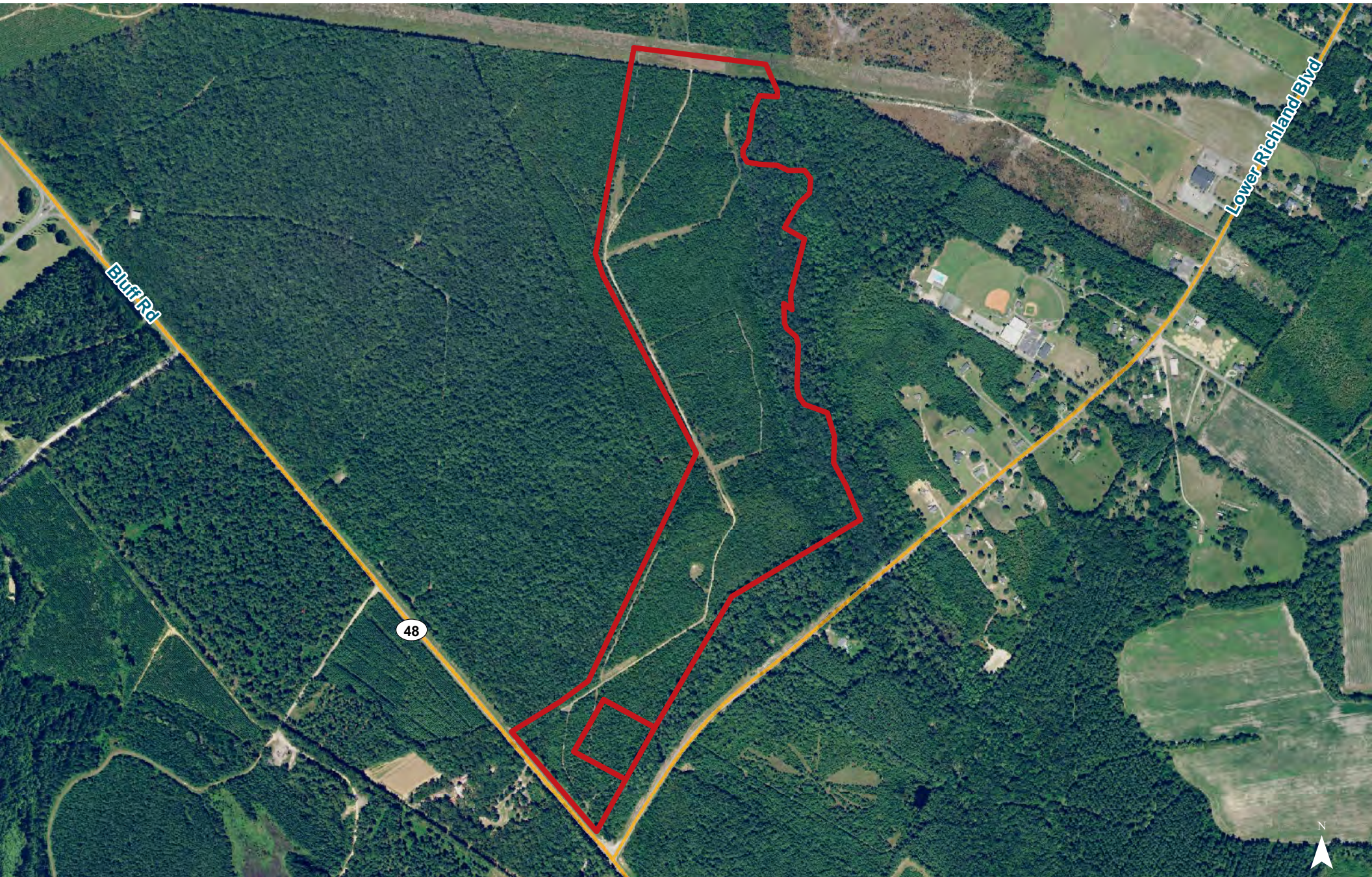


# Location



Map Updated: Thursday, January 30, 2020. This information submitted is not guaranteed. Although obtained from reliable sources, all information should be confirmed prior to use or reliance upon the information. This document may not be reproduced in whole or in part without the express written consent of NAI Columbia.

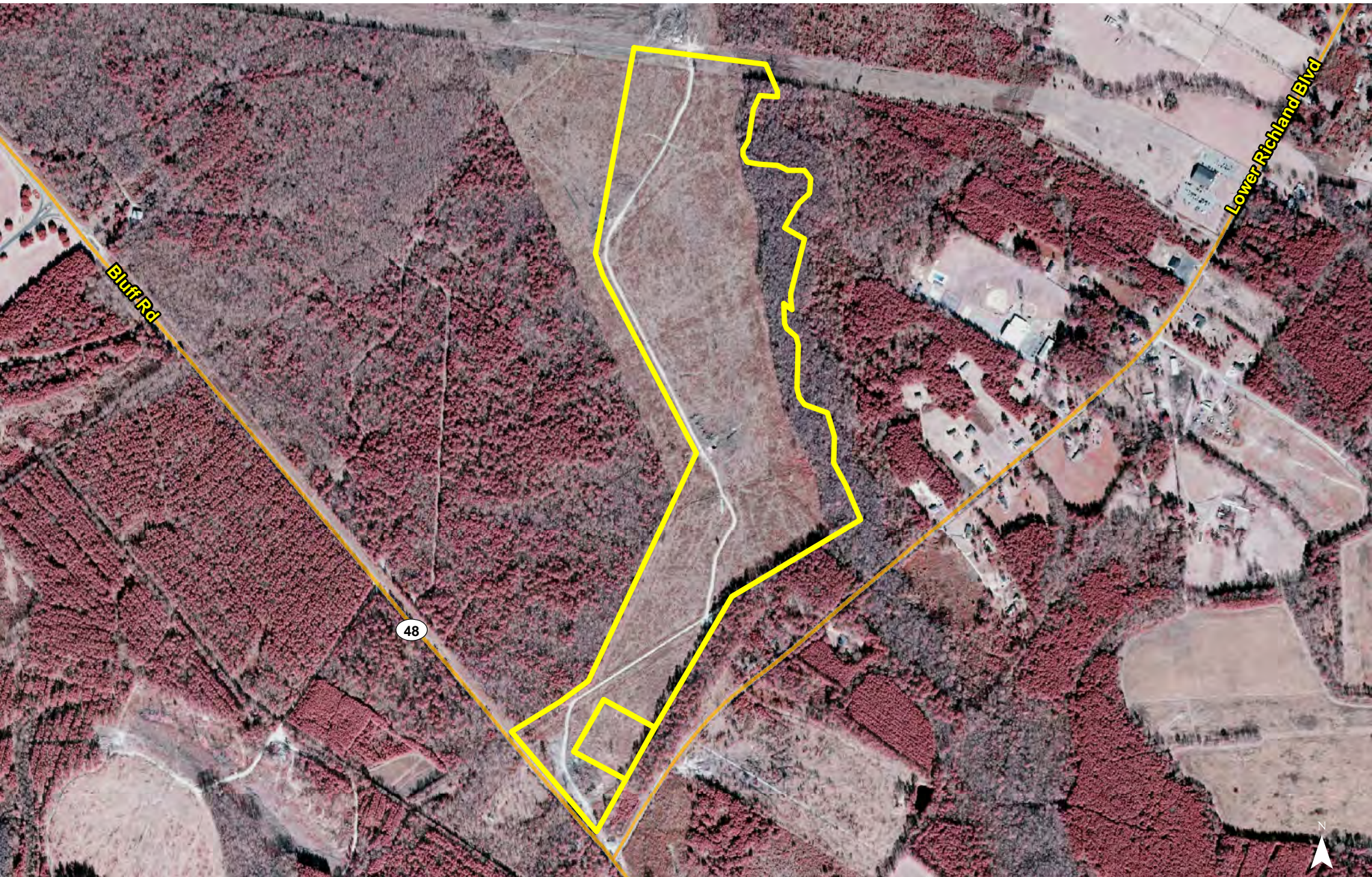




Map Updated: Thursday, January 30, 2020. This information submitted is not guaranteed. Although obtained from reliable sources, all information should be confirmed prior to use or reliance upon the information. This document may not be reproduced in whole or in part without the express written consent of NAI Columbia.

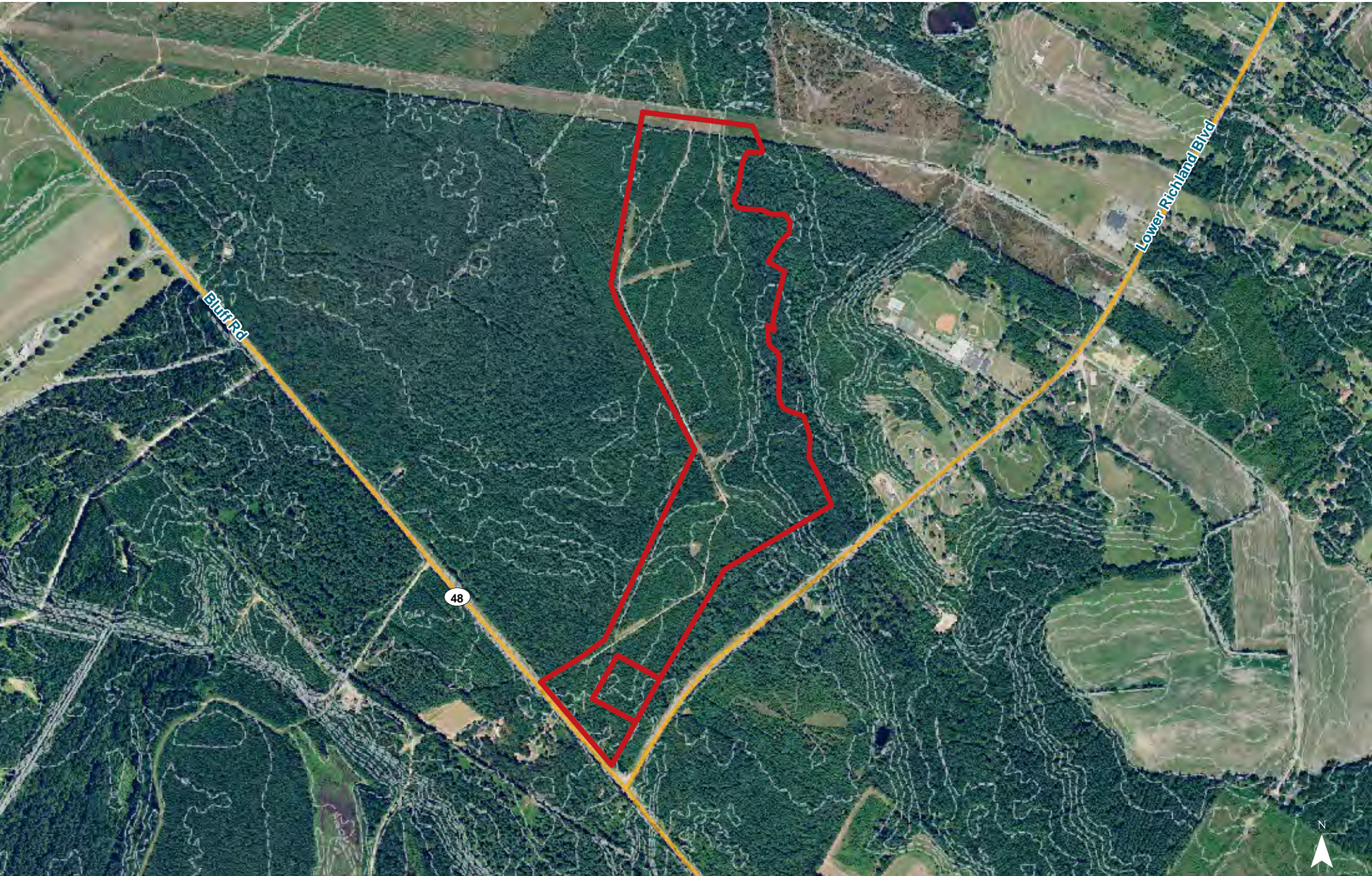






Map Updated: Thursday, January 30, 2020. This information submitted is not guaranteed. Although obtained from reliable sources, all information should be confirmed prior to use or reliance upon the information. This document may not be reproduced in whole or in part without the express written consent of NAI Columbia.



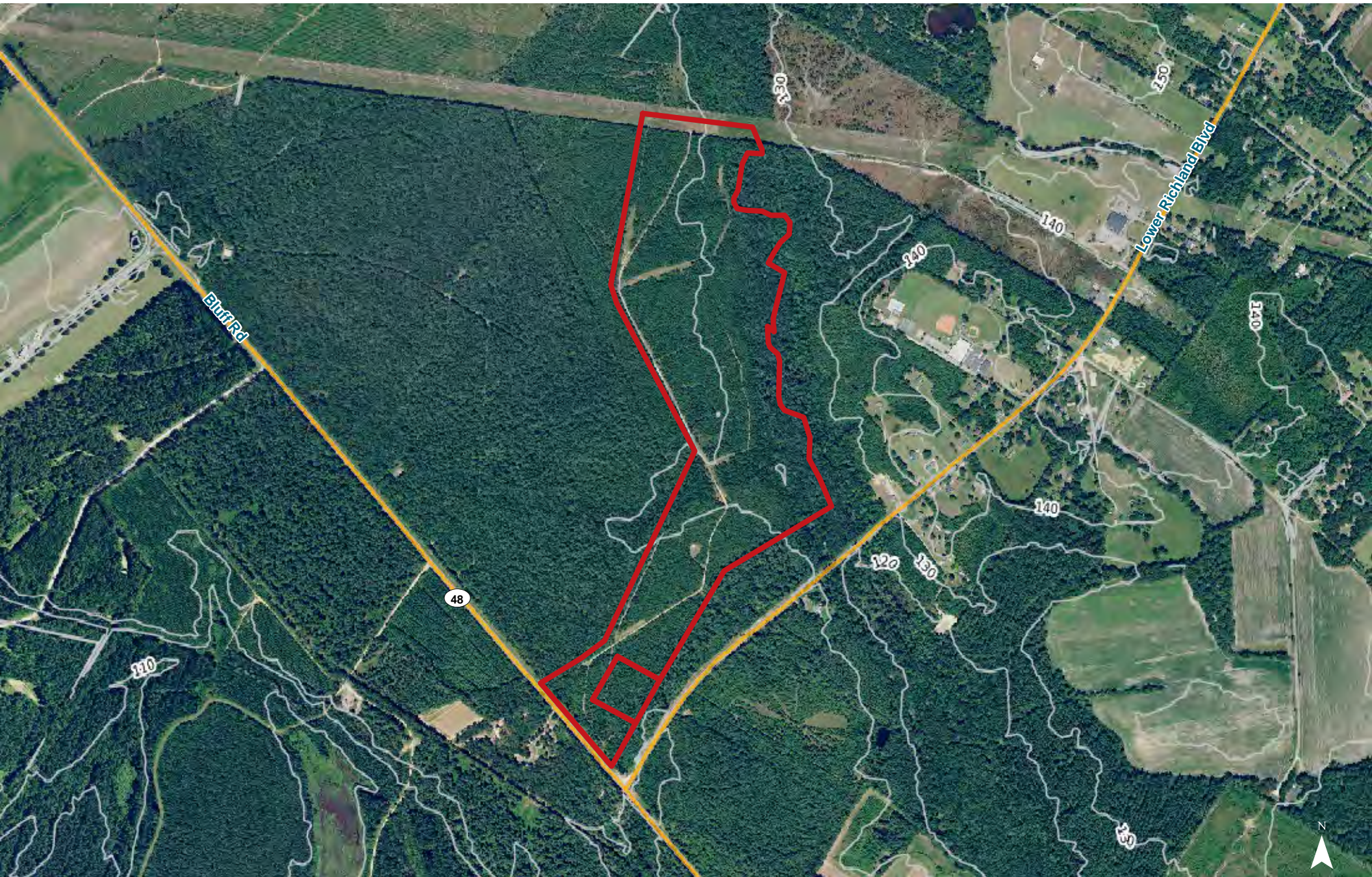


Map Updated: Thursday, January 30, 2020. This information submitted is not guaranteed. Although obtained from reliable sources, all information should be confirmed prior to use or reliance upon the information. This document may not be reproduced in whole or in part without the express written consent of NAI Columbia.





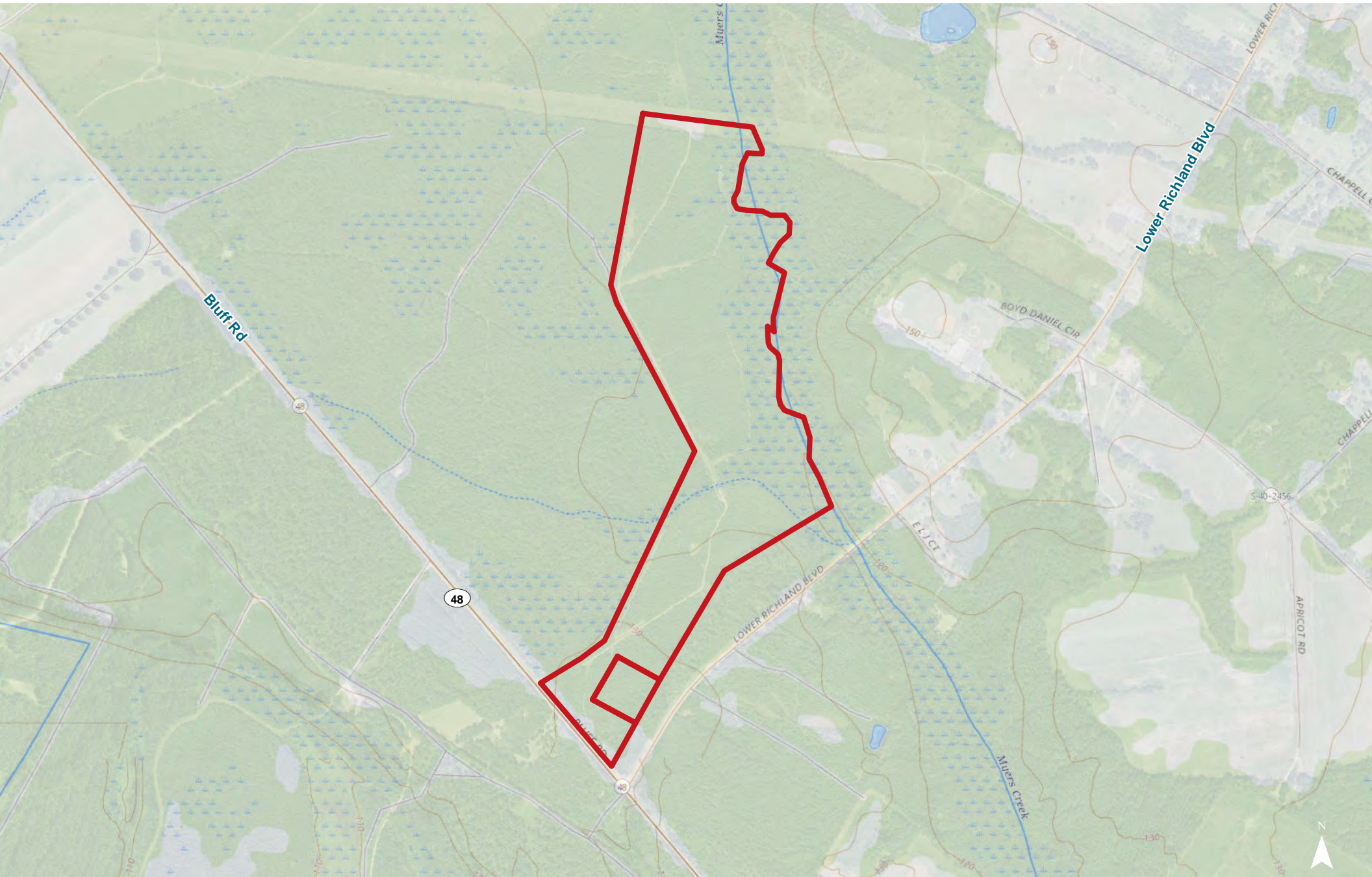
# Topographical Map: 10'



Map Updated: Thursday, January 30, 2020. This information submitted is not guaranteed. Although obtained from reliable sources, all information should be confirmed prior to use or reliance upon the information. This document may not be reproduced in whole or in part without the express written consent of NAI Columbia.

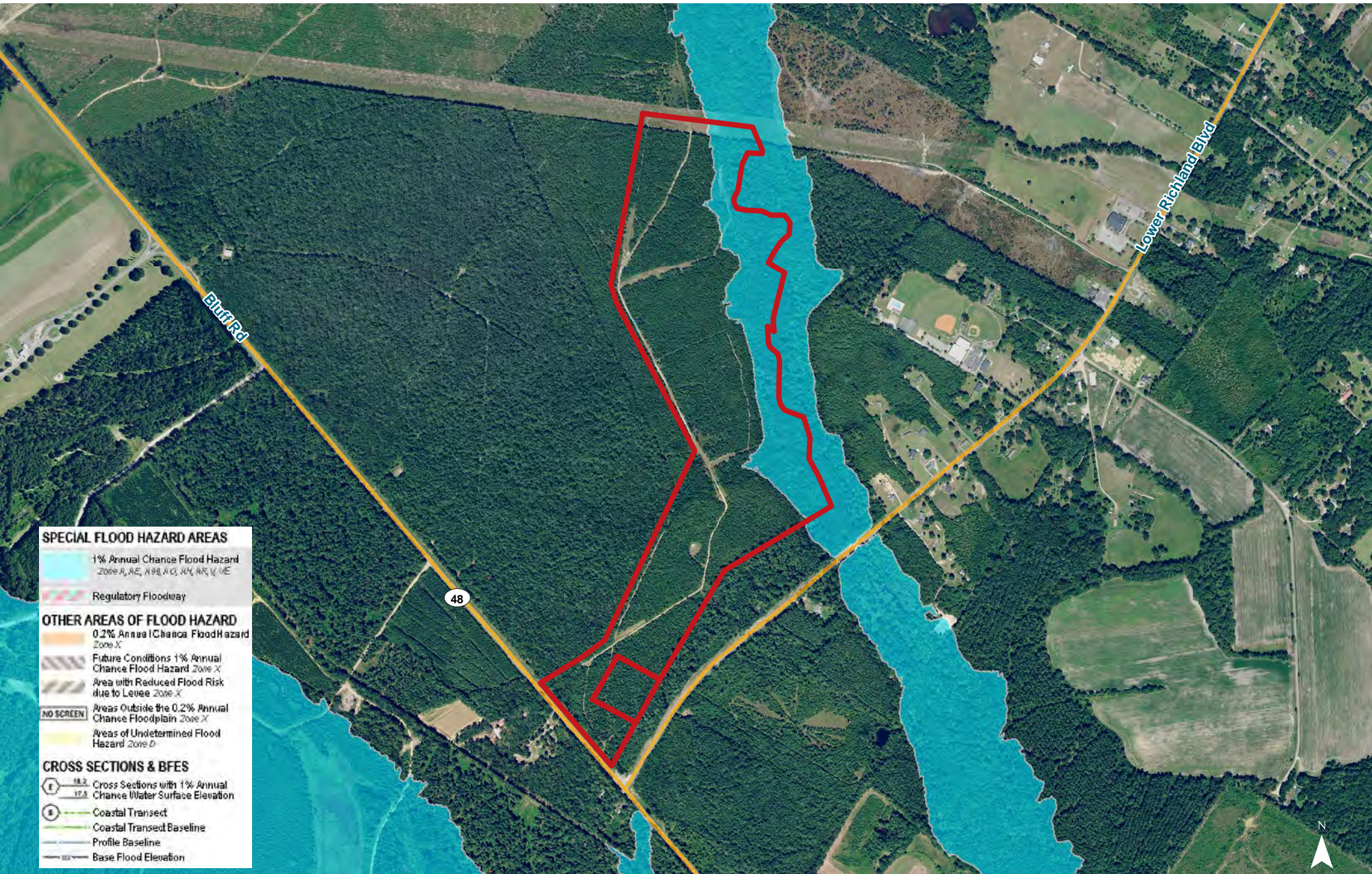


# Topographical Map



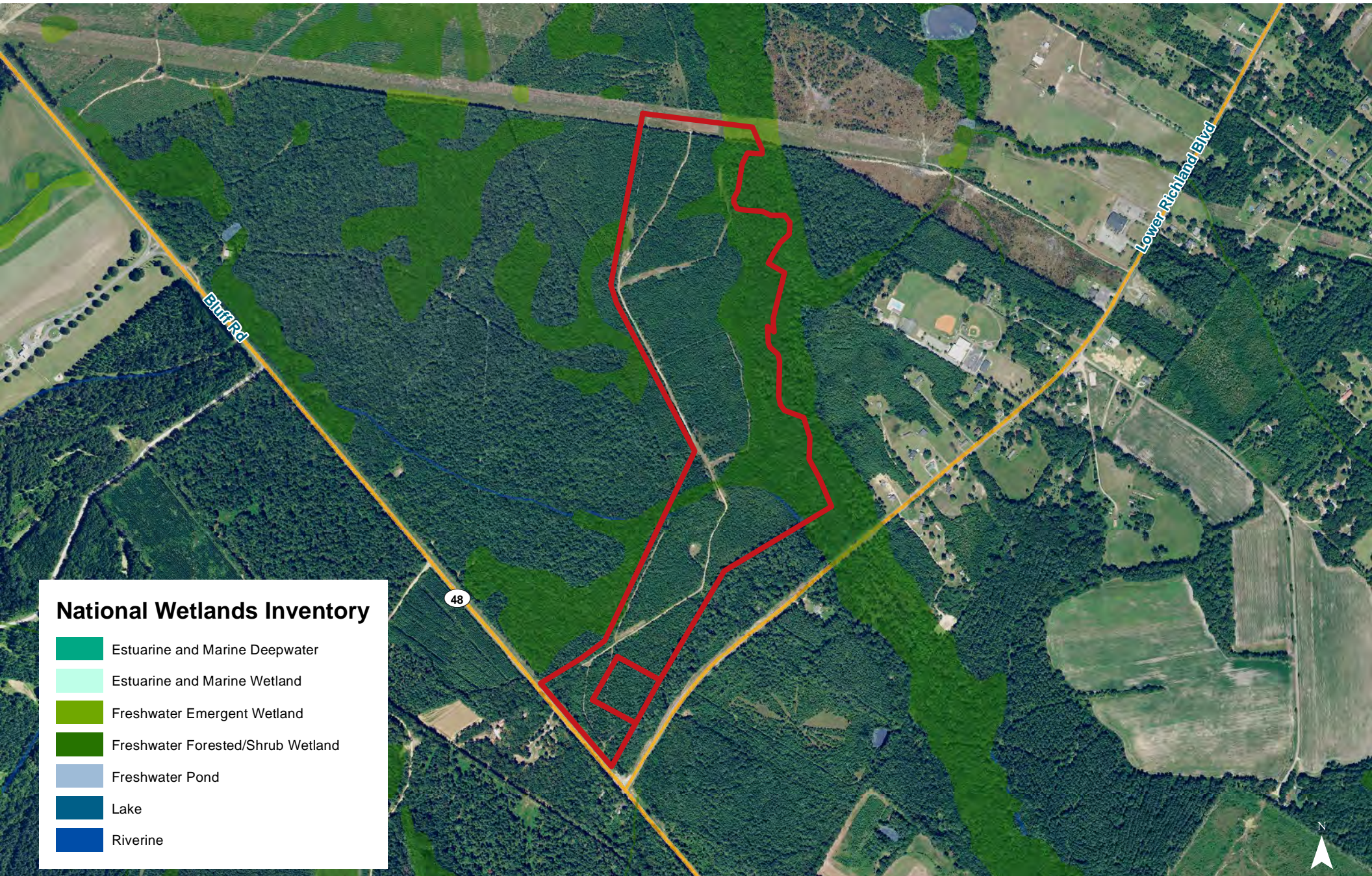
Map Updated: Thursday, January 30, 2020. This information submitted is not guaranteed. Although obtained from reliable sources, all information should be confirmed prior to use or reliance upon the information. This document may not be reproduced in whole or in part without the express written consent of NAI Columbia.





Map Updated: Thursday, January 30, 2020. This information submitted is not guaranteed. Although obtained from reliable sources, all information should be confirmed prior to use or reliance upon the information. This document may not be reproduced in whole or in part without the express written consent of NAI Columbia.



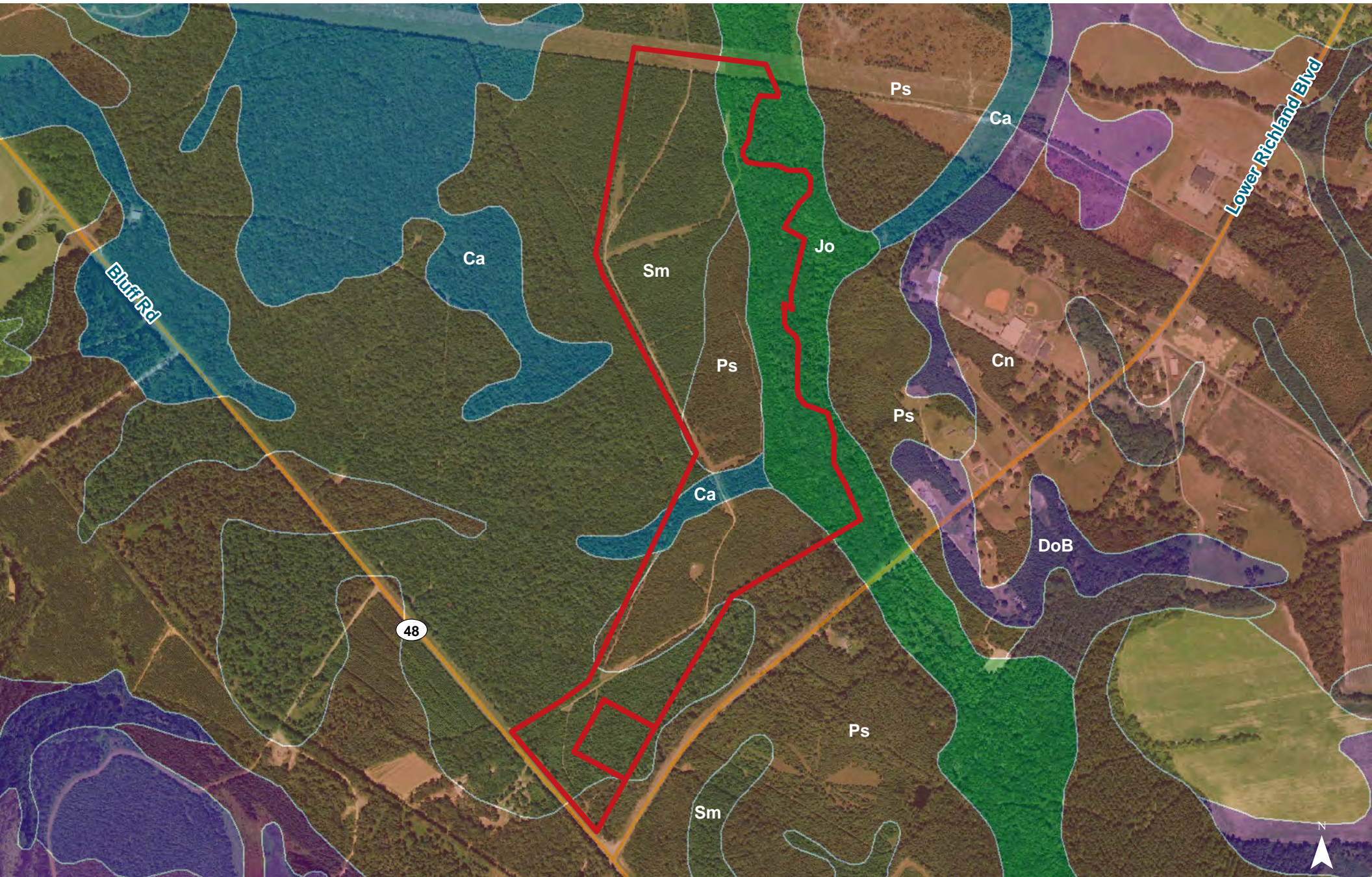


### National Wetlands Inventory

- Estuarine and Marine Deepwater
- Estuarine and Marine Wetland
- Freshwater Emergent Wetland
- Freshwater Forested/Shrub Wetland
- Freshwater Pond
- Lake
- Riverine

Map Updated: Thursday, January 30, 2020. This information submitted is not guaranteed. Although obtained from reliable sources, all information should be confirmed prior to use or reliance upon the information. This document may not be reproduced in whole or in part without the express written consent of NAI Columbia.





Map Updated: Thursday, January 30, 2020. This information submitted is not guaranteed. Although obtained from reliable sources, all information should be confirmed prior to use or reliance upon the information. This document may not be reproduced in whole or in part without the express written consent of NAI Columbia.



# Map Unit Description (Brief, Generated)

Richland County, South Carolina

[Minor map unit components are excluded from this report]

**Map unit:** Ca - Cantey loam

**Component:** Cantey (100%)

*The Cantey component makes up 100 percent of the map unit. Slopes are 0 to 2 percent. This component is on depressions, flats, marine terraces on coastal plains. The parent material consists of clayey marine deposits. Depth to a root restrictive layer is greater than 60 inches. The natural drainage class is poorly drained. Water movement in the most restrictive layer is moderately high. Available water to a depth of 60 inches is low. Shrink-swell potential is low. This soil is not flooded. It is not ponded. A seasonal zone of water saturation is at 0 inches during January, February, March, April, November, December. Organic matter content in the surface horizon is about 3 percent. Nonirrigated land capability classification is 3w. This soil meets hydric criteria.*

**Map unit:** Cn - Clarendon sandy loam

**Component:** Clarendon (100%)

*The Clarendon component makes up 100 percent of the map unit. Slopes are 0 to 2 percent. This component is on marine terraces on coastal plains. The parent material consists of loamy marine deposits. Depth to a root restrictive layer is greater than 60 inches. The natural drainage class is moderately well drained. Water movement in the most restrictive layer is moderately high. Available water to a depth of 60 inches is moderate. Shrink-swell potential is low. This soil is not flooded. It is not ponded. A seasonal zone of water saturation is at 24 inches during January, February, March, December. Organic matter content in the surface horizon is about 2 percent. Nonirrigated land capability classification is 2w. This soil does not meet hydric criteria.*

**Map unit:** DoB - Dothan loamy sand, 2 to 6 percent slopes

**Component:** Dothan (100%)

*The Dothan component makes up 100 percent of the map unit. Slopes are 2 to 6 percent. This component is on marine terraces on coastal plains. The parent material consists of plinthic loamy marine deposits. Depth to a root restrictive layer is greater than 60 inches. The natural drainage class is well drained. Water movement in the most restrictive layer is moderately high. Available water to a depth of 60 inches is moderate. Shrink-swell potential is low. This soil is not flooded. It is not ponded. A seasonal zone of water saturation is at 36 inches during January, February, March, April. Organic matter content in the surface horizon is about 0 percent. Nonirrigated land capability classification is 2e. This soil does not meet hydric criteria.*



# Map Unit Description (Brief, Generated)

Richland County, South Carolina

**Map unit:** Jo - Johnston loam

**Component:** Johnston (100%)

*The Johnston component makes up 100 percent of the map unit. Slopes are 0 to 2 percent. This component is on flood plains, coastal plains. The parent material consists of loamy alluvium. Depth to a root restrictive layer is greater than 60 inches. The natural drainage class is very poorly drained. Water movement in the most restrictive layer is moderately high. Available water to a depth of 60 inches is moderate. Shrink-swell potential is low. This soil is frequently flooded. It is not ponded. A seasonal zone of water saturation is at 0 inches during January, February, March, April, May, June, July, August, September, October, November, December. Organic matter content in the surface horizon is about 6 percent. Nonirrigated land capability classification is 7w. This soil meets hydric criteria.*

**Map unit:** Ps - Persanti very fine sandy loam

**Component:** Persanti (96%)

*The Persanti component makes up 96 percent of the map unit. Slopes are 0 to 2 percent. This component is on marine terraces on coastal plains. The parent material consists of clayey marine deposits. Depth to a root restrictive layer is greater than 60 inches. The natural drainage class is moderately well drained. Water movement in the most restrictive layer is moderately high. Available water to a depth of 60 inches is moderate. Shrink-swell potential is low. This soil is not flooded. It is not ponded. A seasonal zone of water saturation is at 24 inches during January, February, March, April, December. Organic matter content in the surface horizon is about 2 percent. Nonirrigated land capability classification is 2w. This soil does not meet hydric criteria.*

**Map unit:** Sm - Smithboro loam

**Component:** Smithboro (90%)

*The Smithboro component makes up 90 percent of the map unit. Slopes are 0 to 2 percent. This component is on marine terraces on coastal plains. The parent material consists of clayey marine deposits. Depth to a root restrictive layer is greater than 60 inches. The natural drainage class is somewhat poorly drained. Water movement in the most restrictive layer is moderately high. Available water to a depth of 60 inches is moderate. Shrink-swell potential is low. This soil is not flooded. It is not ponded. A seasonal zone of water saturation is at 6 inches during January, February, March, December. Organic matter content in the surface horizon is about 2 percent. Nonirrigated land capability classification is 3w. This soil does not meet hydric criteria.*