



Highlights

- 6-Story office building totaling 82,998 sf
- Smart card access control (24/7 building access)
- Premier Downtown Boca Location
- Café on premises
- On-site property management

Available Suites

- Suite 110 3,621 rsf
 - Suite 200 5,013 rsf
 - Suite 220 3,689 rsf
 - Suite 250 2,548 rsf
 - Suite 610 1,955 rsf
 - Suite 620 1,624 rsf
- >Can be combined offering 8,702 rsf

CLASS A OFFICE SPACE FOR LEASE

Gary A. Gottlieb, SIOR, Principal

561.721.7025

gary.gottlieb@avisonyoung.com

Keith O'Donnell, Principal

561.893.7011

keith.odonnell@avisonyoung.com



Lobby



Covered Portico Entry with Valet



Office View - Boca Raton Resort & Club

For more information please contact:

Gary A. Gottlieb, SIOR, Principal

561.721.7025

gary.gottlieb@avisonyoung.com

Keith O'Donnell, Principal

561.893.7011

keith.odonnell@avisonyoung.com

SUITE 110 PHOTOS



For more information please contact:

Gary A. Gottlieb, SIOR, Principal

561.721.7025

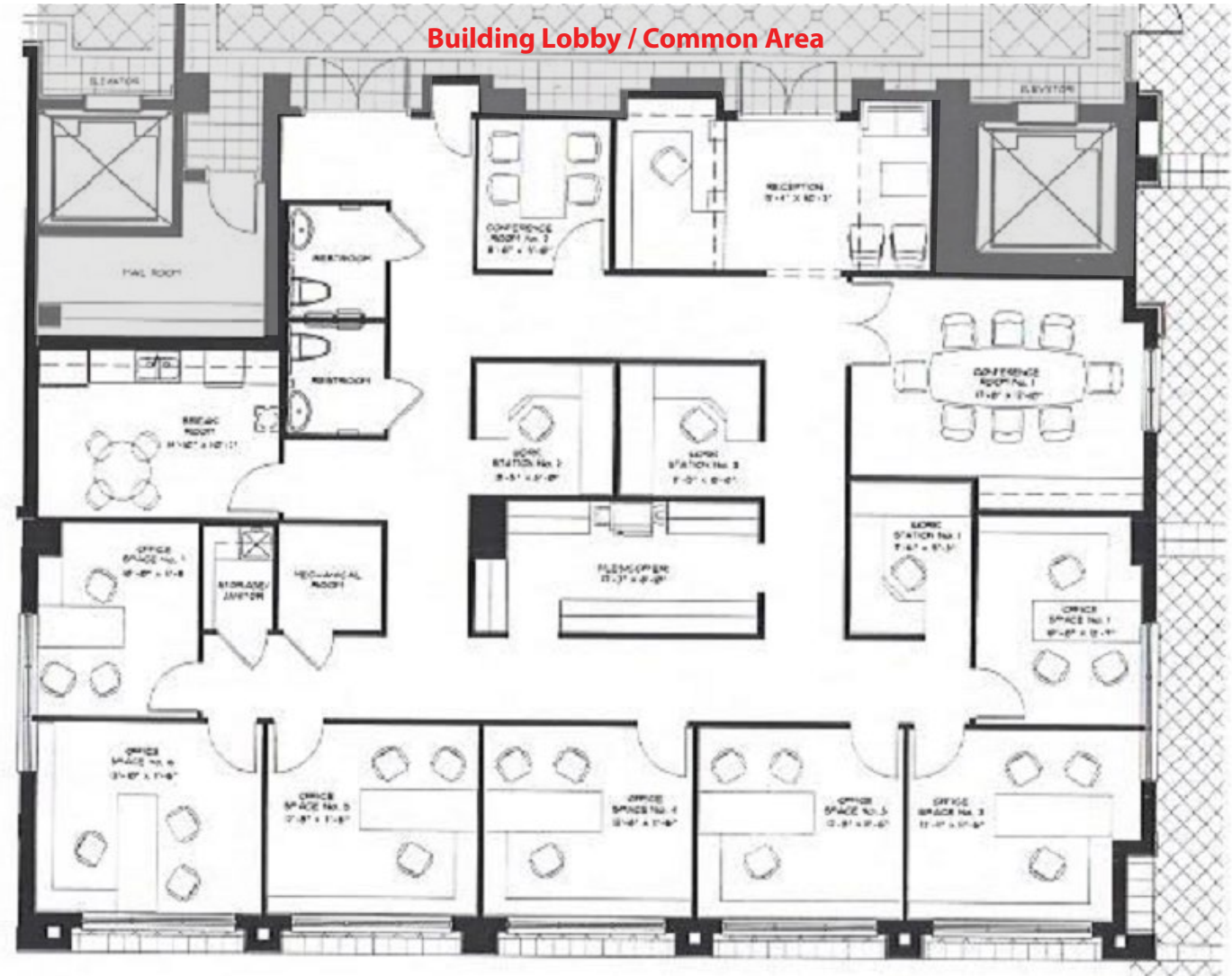
gary.gottlieb@avisonyoung.com

Keith O'Donnell, Principal

561.893.7011

keith.odonnell@avisonyoung.com

Suite 110 - 3,621 rsf



Rental Rate

- \$23.00 psf (NNN)
- + \$16.50 in Operating Expenses
- (includes Tenant electric and janitorial)

For more information please contact:

Gary A. Gottlieb, SIOR, Principal
561.721.7025
gary.gottlieb@avisonyoung.com

Keith O'Donnell, Principal
561.893.7011
keith.odonnell@avisonyoung.com

SUITE 200-220 PHOTOS



For more information please contact:

Gary A. Gottlieb, SIOR, Principal

561.721.7025

gary.gottlieb@avisonyoung.com

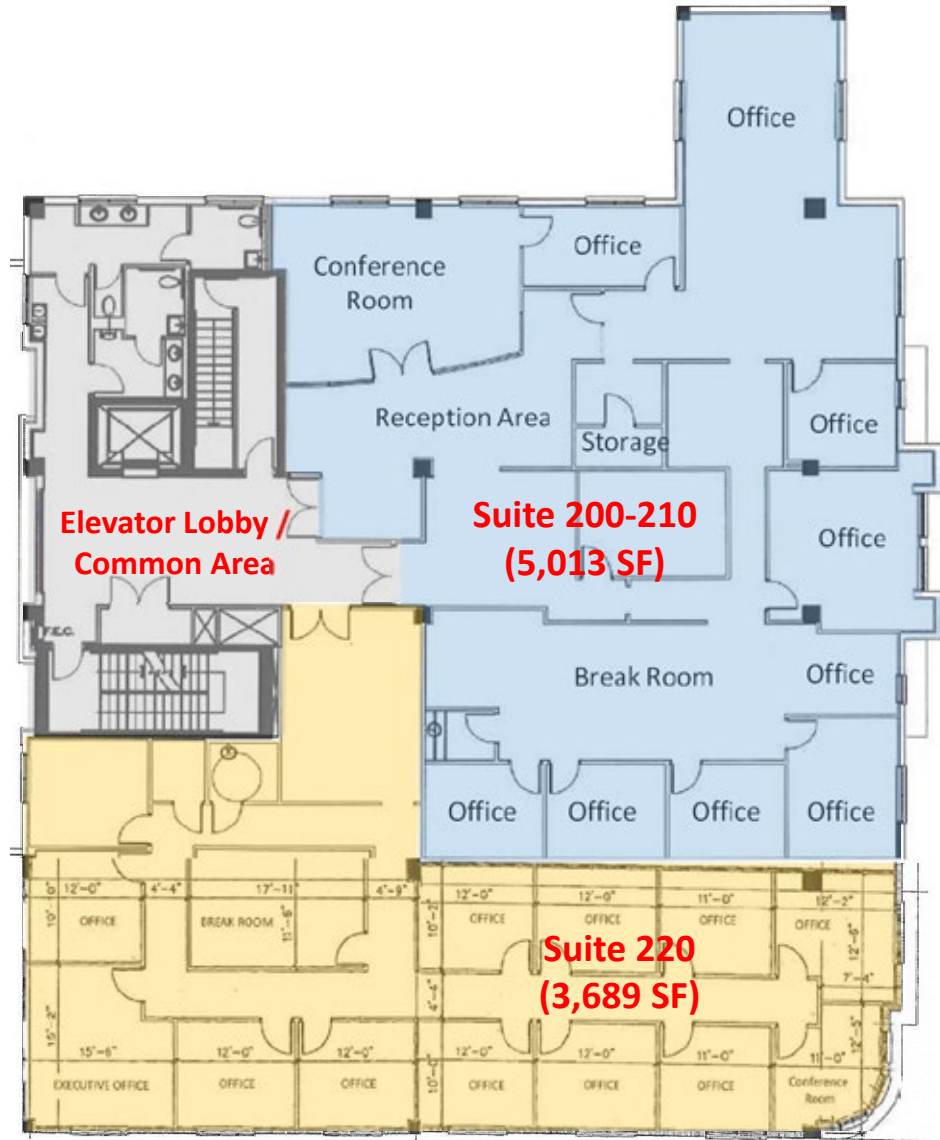
Keith O'Donnell, Principal

561.893.7011

keith.odonnell@avisonyoung.com

Suite 200 - 5,013 rsf

Suite 220 - 3,689 rsf



Rental Rate

- \$23.00 psf (NNN)
- + \$16.50 in Operating Expenses
- (includes Tenant electric and janitorial)

For more information please contact:

Gary A. Gottlieb, SIOR, Principal

561.721.7025

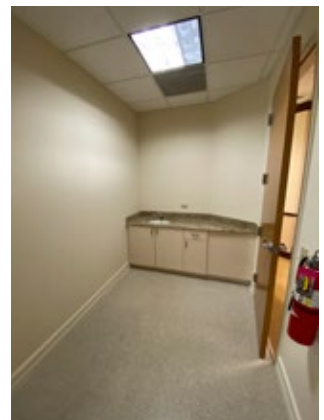
gary.gottlieb@avisonyoung.com

Keith O'Donnell, Principal

561.893.7011

keith.odonnell@avisonyoung.com

SUITE 250 PHOTOS



For more information please contact:

Gary A. Gottlieb, SIOR, Principal

561.721.7025

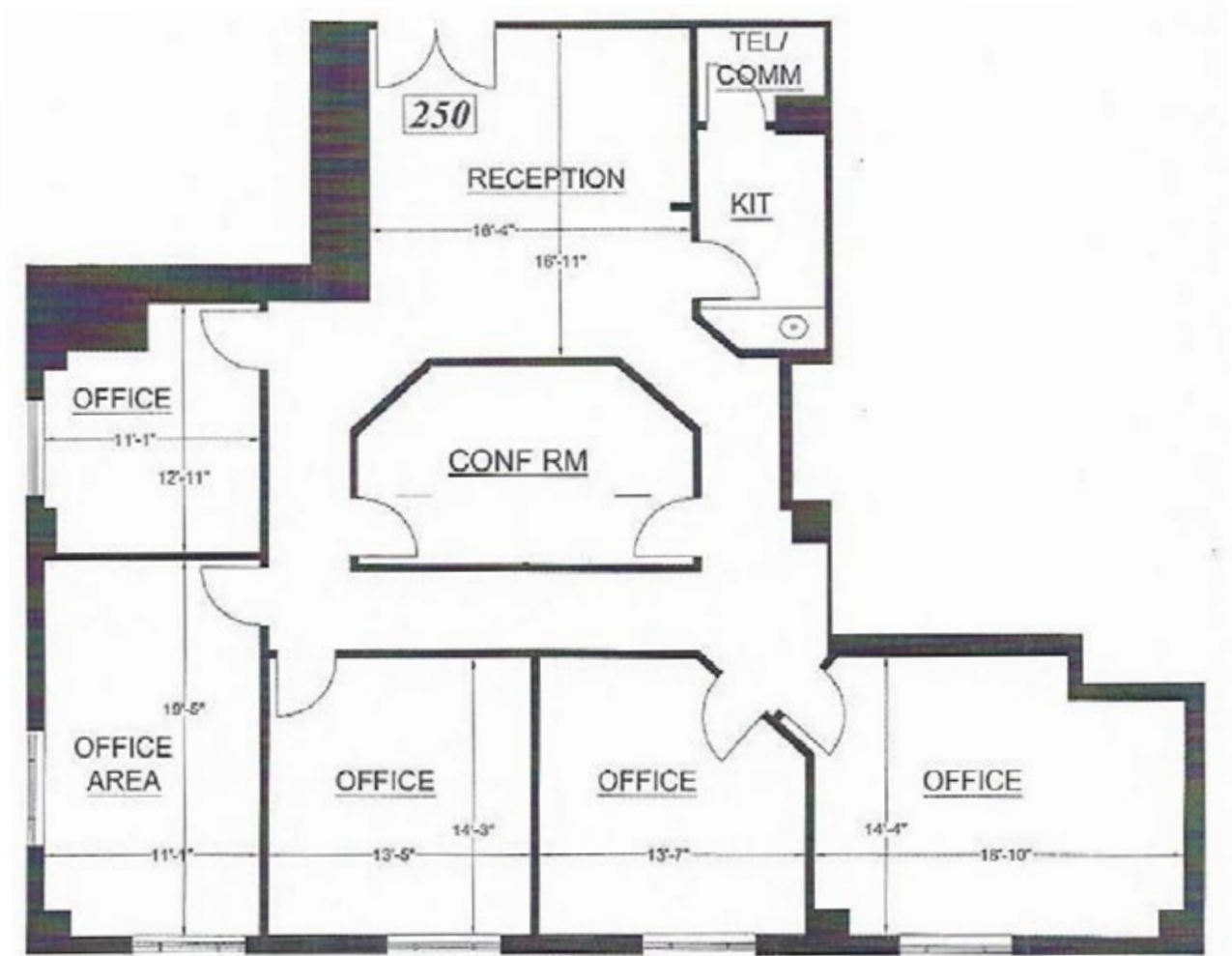
gary.gottlieb@avisonyoung.com

Keith O'Donnell, Principal

561.893.7011

keith.odonnell@avisonyoung.com

Suite 250 - 2,548 rsf



Rental Rate

- \$23.00 psf (NNN)
- + \$16.50 in Operating Expenses
- (includes Tenant electric and janitorial)

For more information please contact:

Gary A. Gottlieb, SIOR, Principal

561.721.7025

gary.gottlieb@avisonyoung.com

Keith O'Donnell, Principal

561.893.7011

keith.odonnell@avisonyoung.com

Suite 610 - 1,955 rsf

Suite 620 - 1,624 rsf



Rental Rate

- \$23.00 psf (NNN)
- + \$16.50 in Operating Expenses
- (includes Tenant electric and janitorial)

For more information please contact:

Gary A. Gottlieb, SIOR, Principal

561.721.7025

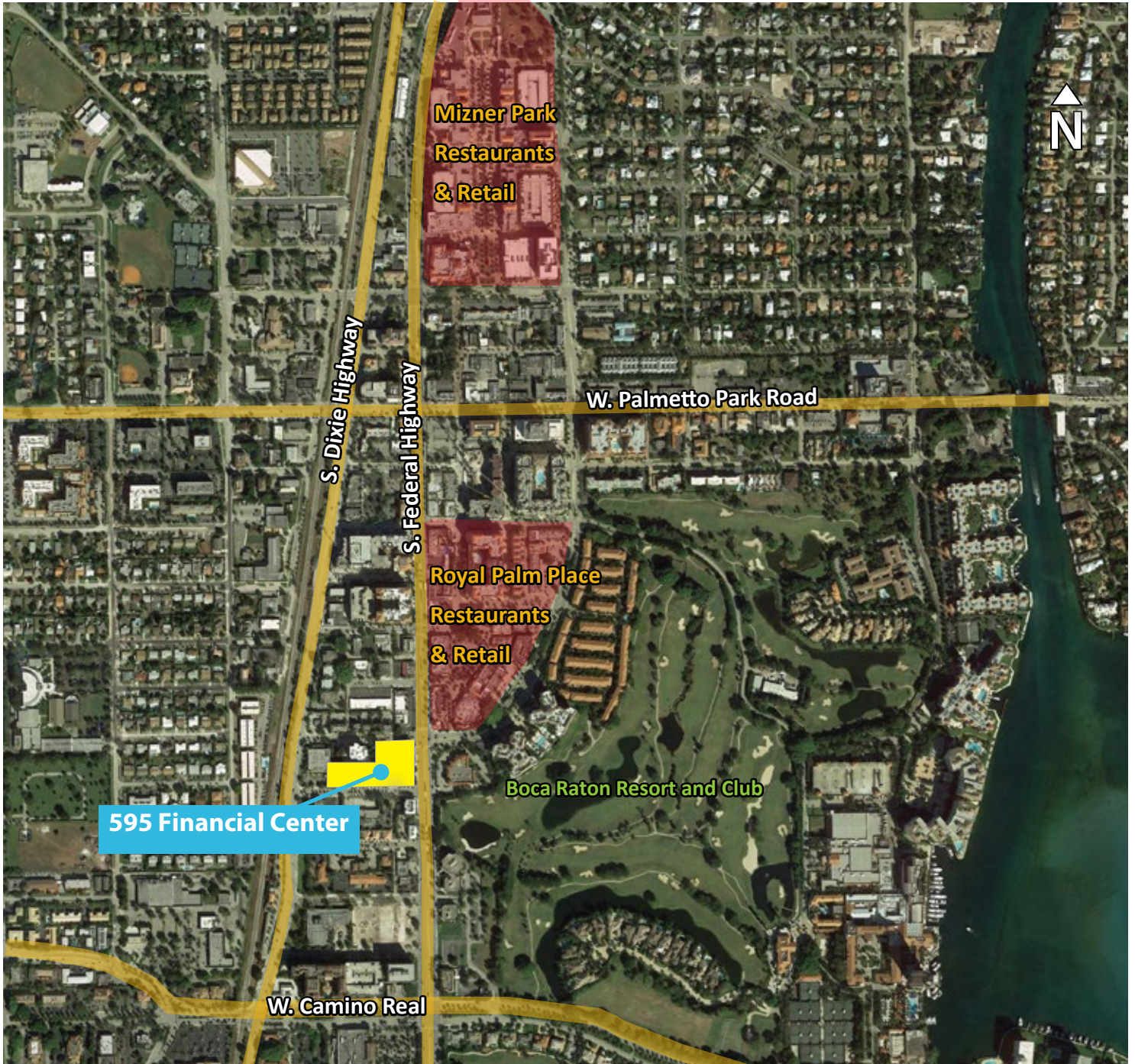
gary.gottlieb@avisonyoung.com

Keith O'Donnell, Principal

561.893.7011

keith.odonnell@avisonyoung.com

Property Location



For more information please contact:

Gary A. Gottlieb, SIOR, Principal

561.721.7025

gary.gottlieb@avisonyoung.com

Keith O'Donnell, Principal

561.893.7011

keith.odonnell@avisonyoung.com