

OFFICE SPACE FOR SUBLEASE

OFFICE SPACE FOR SUBLEASE

1376 Miners Drive, Suite 107

Lafayette CO 80026



Size: 3,358/RSF
Rate: \$9.50/RSF/Year NNN
Expenses: Estimated at \$5.73/RSF/Year
Term: Thru December 31, 2020
County: Boulder

- Great opportunity for an office user for a variety of uses.
- Direct walk-in 24 hour access.
- Front door parking with plenty of additional parking spaces.
- Individual signage and monument signage available.
- Excellent location, straight ahead of main entrance.
- Great western and southwest views with lots of natural light.
- Well established property surrounded by restaurants, breweries, shopping and a few blocks from Old Town.
- Furniture available.



Mary Jo Cummings

Cell: 720.220.6000

9025 East Kenyon Avenue, Suite 100 Denver, CO 80237

SHELDON • GOLD REALTY INC. mcummings@sg-realty.com

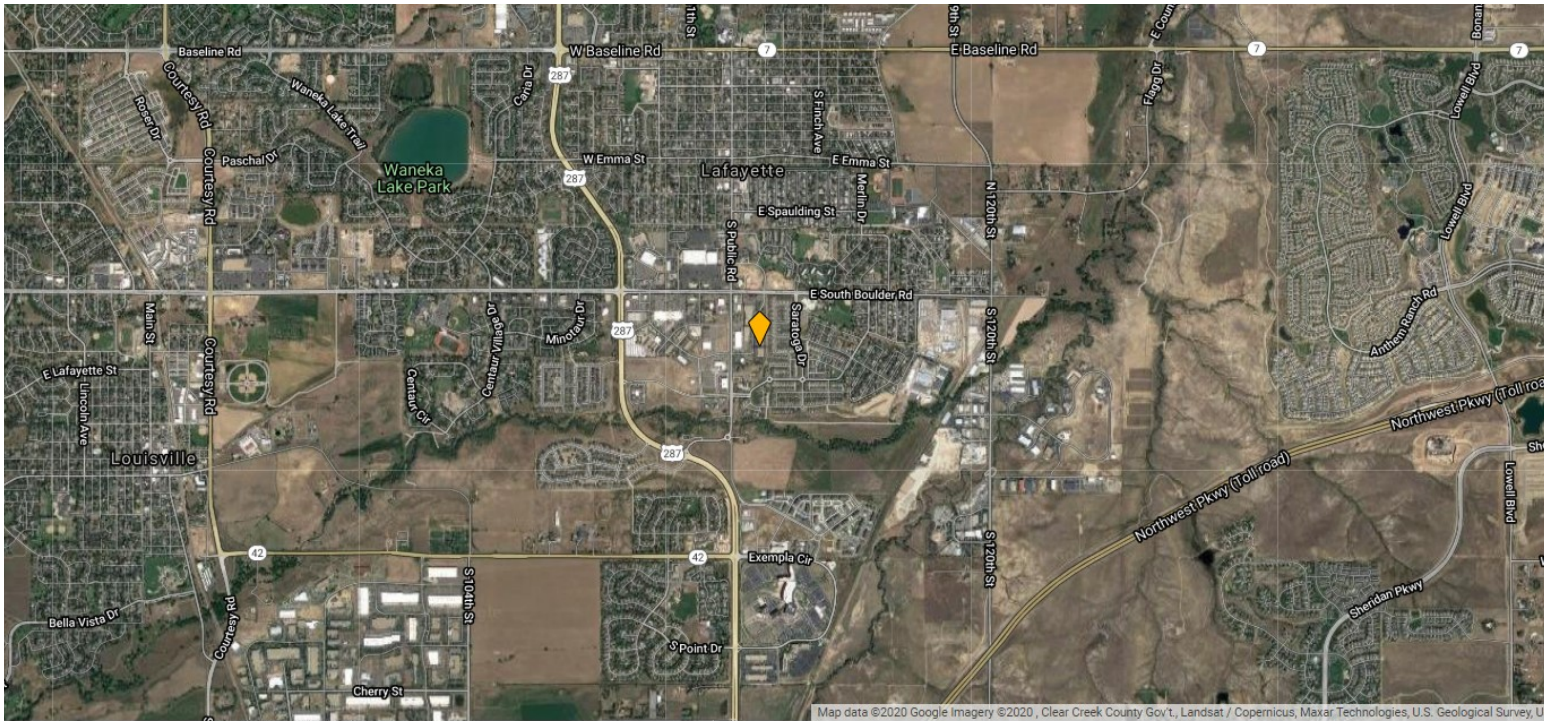
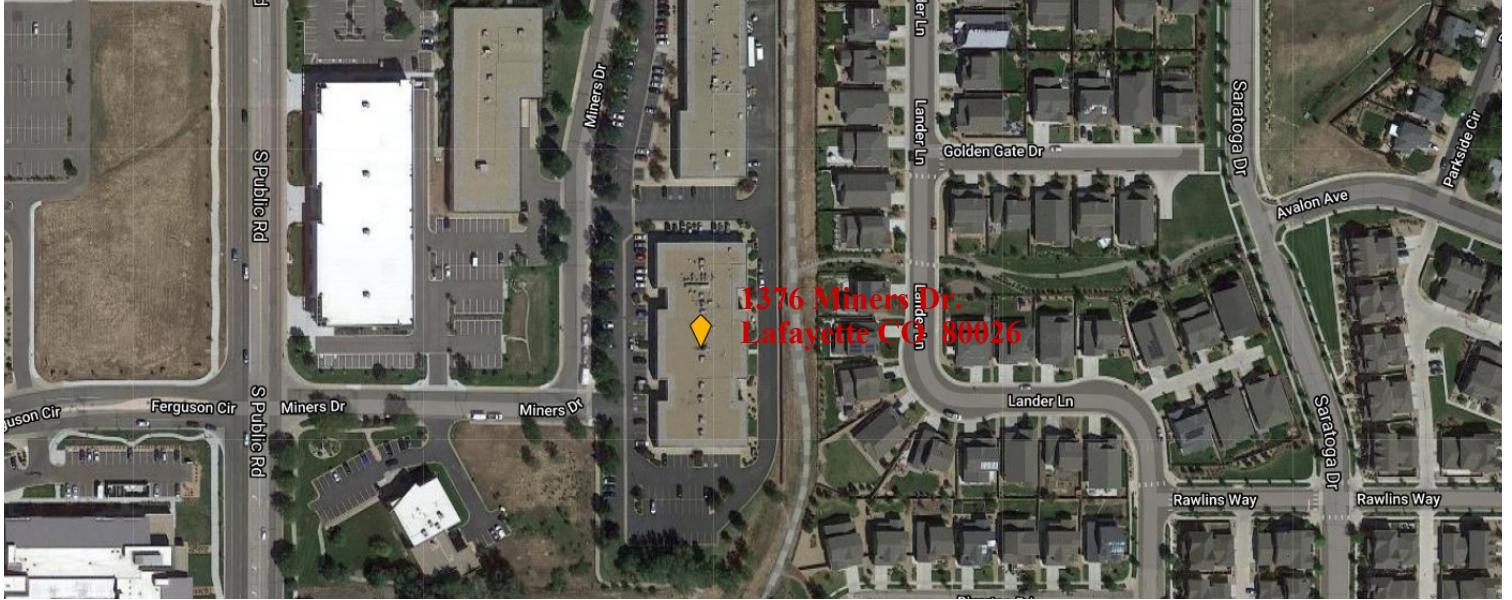
commercial real estate services

www.sg-realty.com



THE INFORMATION CONTAINED HEREIN, WHILE NOT GUARANTEED, IS FROM SOURCES WE BELIEVE RELIABLE. PRICE, TERMS AND INFORMATION ARE SUBJECT TO CHANGE. SHELDON•GOLD REALTY INC. AND ITS BROKER ASSOCIATES, ARE OR WILL BE ACTING AS AGENTS OF THE SELLER/LESSOR WITH THE DUTY TO REPRESENT THE INTERESTS OF THE SELLER/LESSOR. SHELDON•GOLD REALTY INC. WILL NOT ACT AS YOUR AGENT UNLESS AN AGENCY AGREEMENT IS SIGNED AND IN EFFECT.

OFFICE SPACE FOR SUBLEASE
1376 Miners Drive, Suite 107
Lafayette CO 80026



OFFICE SPACE FOR SUBLEASE

1376 Miners Drive, Suite 107

Lafayette CO 80026

