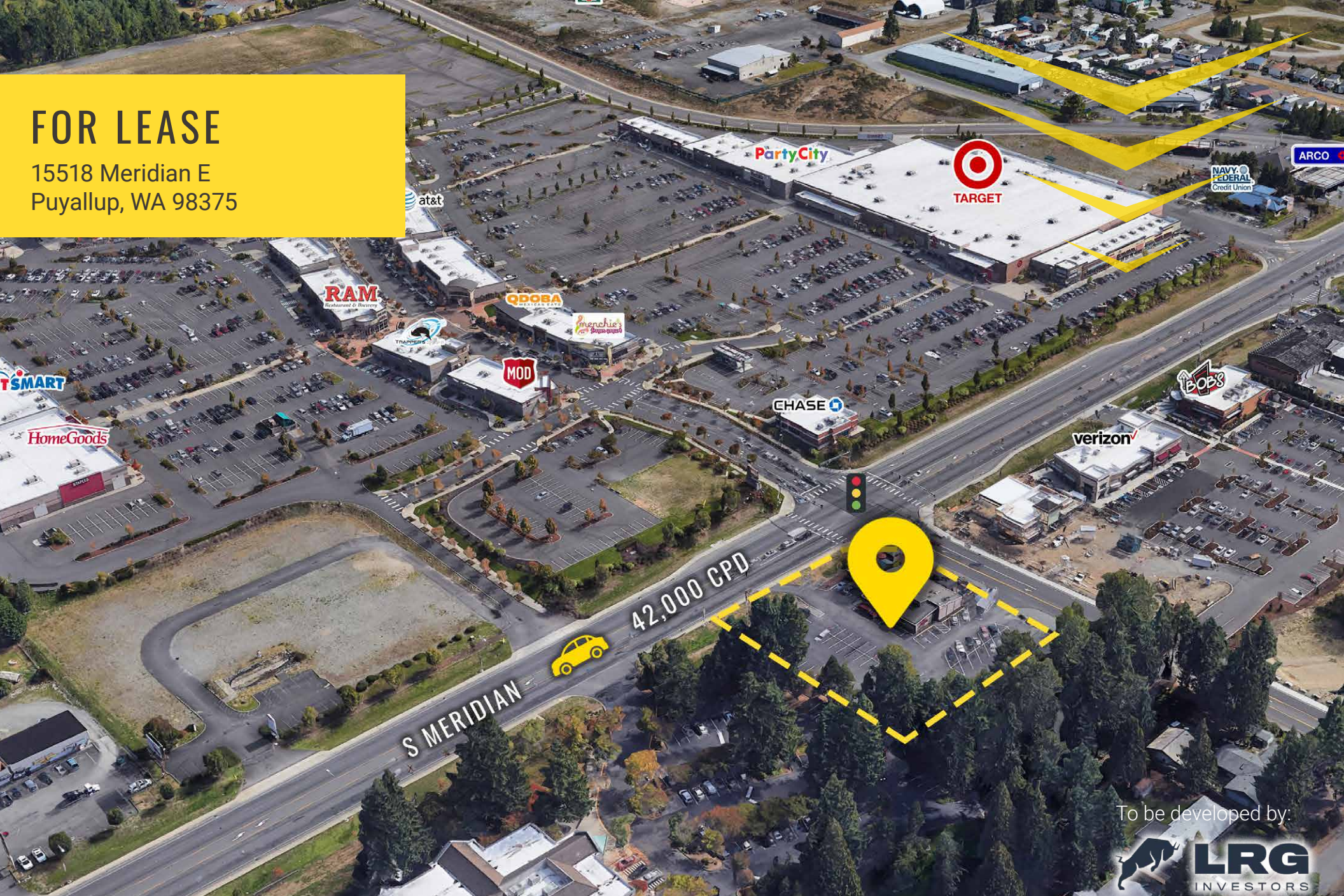


FOR LEASE

15518 Meridian E
Puyallup, WA 98375



To be developed by:



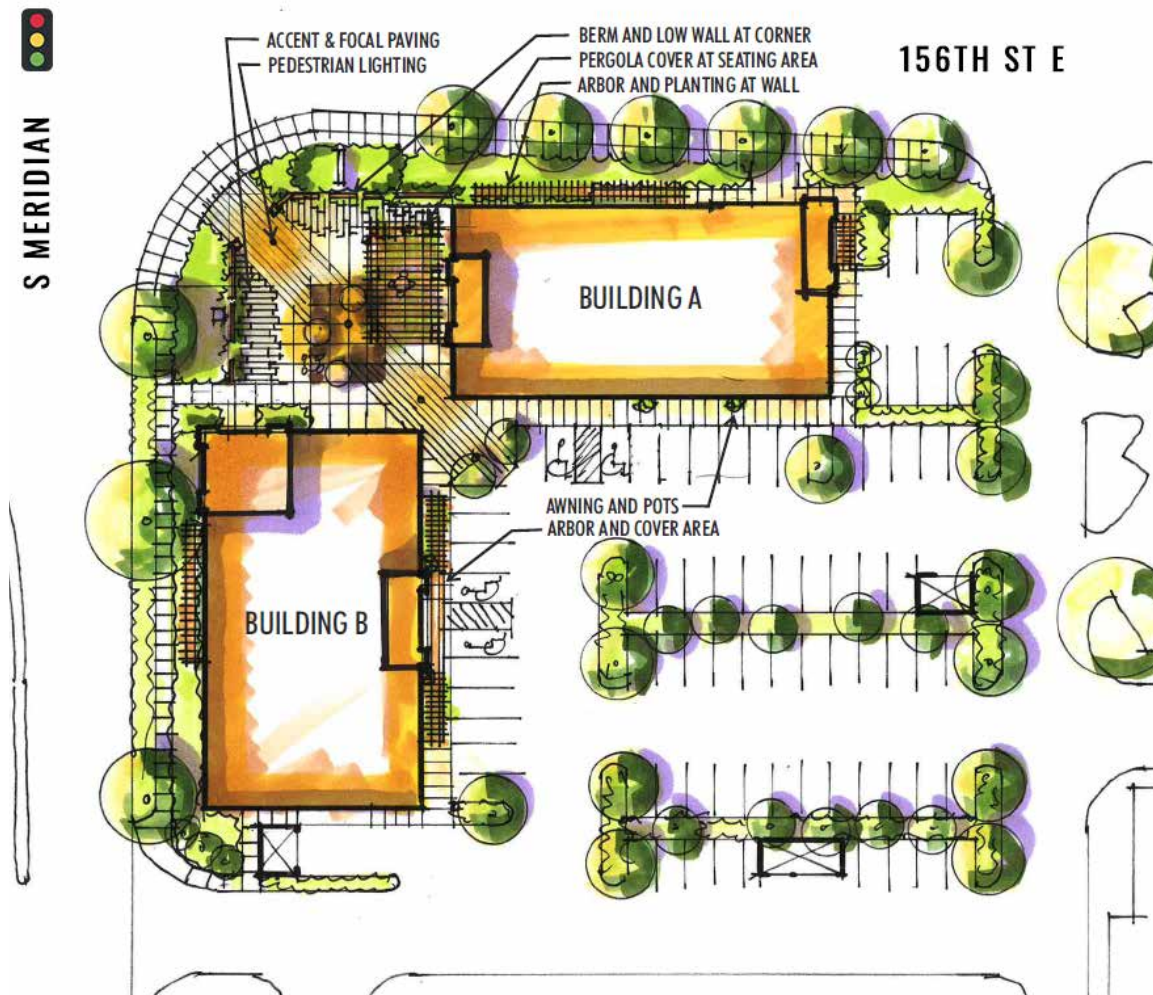
PUYALLUP DEVELOPMENT

Justin Holmes | Josh Parnell

First Western Properties—Tacoma Inc. | 253.472.0404
6402 Tacoma Mall Blvd, Tacoma, WA 98409 | fwp-inc.com

15518 MERIDIAN E:

- Premier retail development with drive-thru opportunity located in the heart of Puyallup along the busy thoroughfare of S Meridian with over 42,000 CPD.
- Located at a lighted intersection across from Sunrise Village anchored by Target, LA Fitness and Home Goods.
- Large amount of residential growth happening in the immediate area.



*Preliminary site plan and subject to change – Drive-Thru opportunities available

NEARBY RETAIL



DEMOGRAPHICS

POPULATION

Mile 1	Mile 3	Mile 5
8,210	91,744	171,535

AVERAGE HH INCOME

Mile 1	Mile 3	Mile 5
\$102,241	\$97,631	\$98,414

DAYTIME POPULATION

Mile 1	Mile 3	Mile 5
5,614	40,985	88,909



PROPOSED RENDERING: VIEW FROM INTERSECTION



PROPOSED RENDERING: VIEW FROM PARKING

LOCATION DETAILS



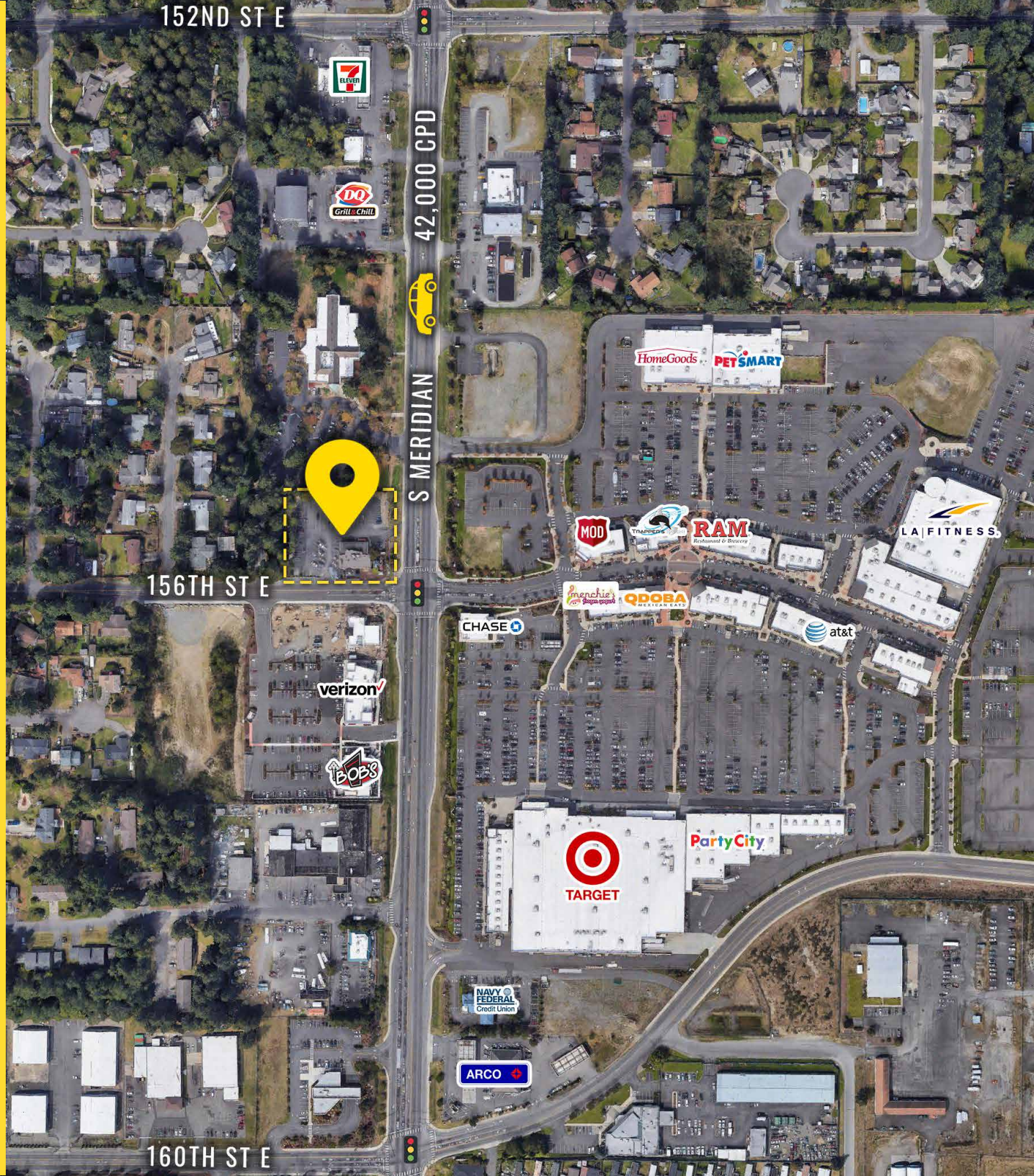
42,000 CPD
S Meridian



Located in the
South Hill retail core
of Puyallup



Over 2,000 new homes
and apartments planned
in the immediate area



TACOMA | KIRKLAND | PORTLAND | SEATTLE



RELATIONSHIP FOCUSED. RESULTS DRIVEN.

JUSTIN HOLMES

253.447.2282
justin@firstwesternproperties.com

JOSH PARNELL

253.284.3630
josh@firstwesternproperties.com



First Western Properties—Tacoma Inc. | 253.472.0404
6402 Tacoma Mall Blvd, Tacoma, WA 98409 | fwp-inc.com

© First Western Properties, Inc. DISCLAIMER: The above information has been secured from sources believed to be reliable, however, no representations are made to its accuracy. Prospective tenants or buyers should consult their professional advisors and conduct their own independent investigation. Properties are subject to change in price and/or availability without notice.