

2,000-3,000-5,000-6,000-10,000 SF AVAILABLE FOR LEASE



NORTH WATERFALL GLEN
9014-9018 HERITAGE PARKWAY, WOODRIDGE, IL

OFFICE

- 1,950 SF
- 3,365 SF
- 5,406 SF
- 6,511 SF
- 10,721 SF

FLEX

- 6,272 SF

FEATURES



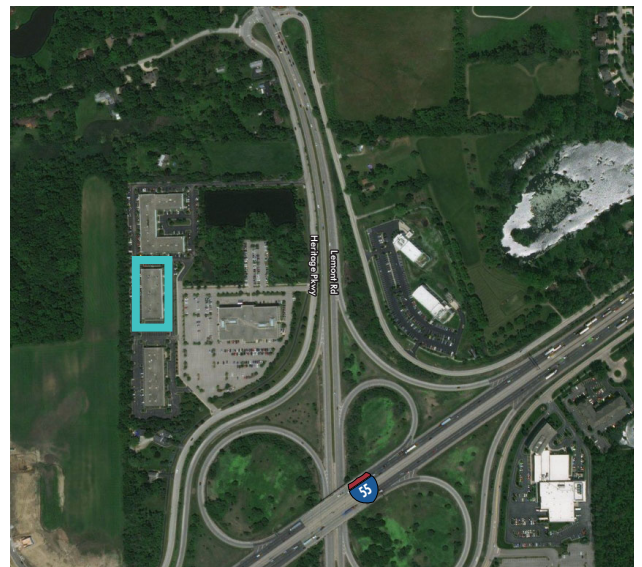
GREAT
EXPRESSWAY
ACCESS AT I-55 &
LEMONT RD



5/1,000 SF
PARKING
RATIO



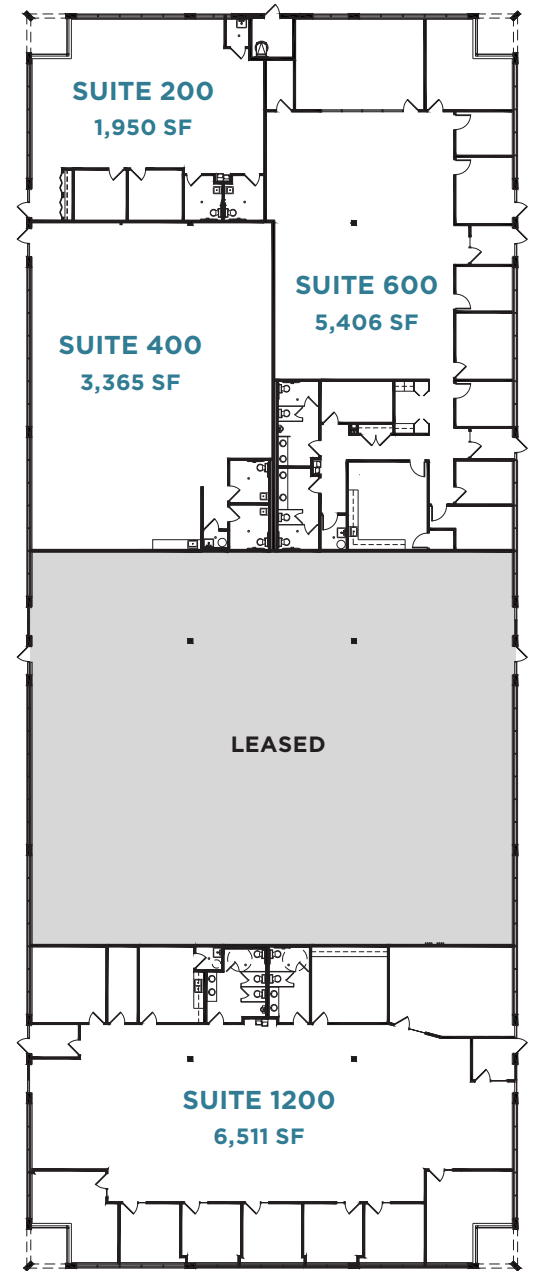
ADJACENT TO
WATERFALL
GLEN FOREST
PRESERVE





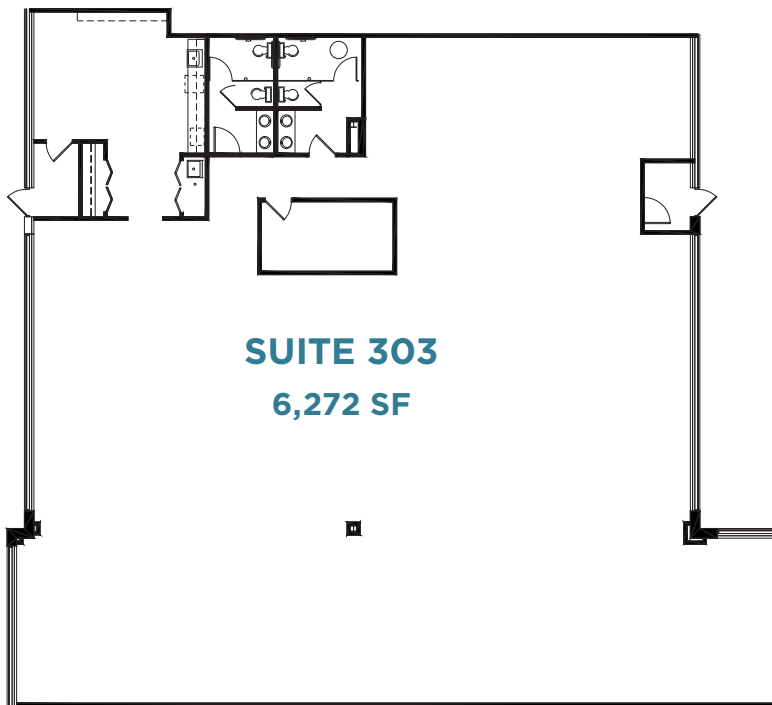
OFFICE FLOORPLAN

9018 Heritage Parkway



FLEX FLOORPLAN

9014 Heritage Parkway



CONTACTS

BILL ELWOOD

Executive Vice President
+1 630 573 7033
william.elwood@cbre.com

DAVID JUSTH

Executive Vice President
+1 630 573 1273
david.justh@cbre.com

TARA TORBIK

Senior Associate
+1 630 573 7822
tara.torbik@cbre.com



© 2019 CBRE, Inc. All rights reserved. This information has been obtained from sources believed reliable, but has not been verified for accuracy or completeness. Any projections, opinions, or estimates are subject to uncertainty. The information may not represent the current or future performance of the property. You and your advisors should conduct a careful, independent investigation of the property and verify all information. Any reliance on this information is solely at your own risk. CBRE and the CBRE logo are service marks of CBRE, Inc. and/or its affiliated or related companies in the United States and other countries. All other marks displayed on this document are the property of their respective owners. Photos herein are the property of their respective owners and use of these images without the express written consent of the owner is prohibited. PMStudio_Feb2019