



**Office Condo For Sale**

**1460** | **Russell Road | Suite 202**  
Paoli, PA

Partnership. Performance.

## OFFICE CONDO SALE OPPORTUNITY: 2,539 SF

*Prime Location Just Off of Lancaster Avenue and on the Daylesford Train Station (Paoli-Thorndale SEPTA Regional Rail)*

- Space: > 2,539 square feet
- Location: > Tredyffrin Township  
> Ranked #2 school district in U.S.A. by Niche  
> Directly off Route 30 (Lancaster Avenue)  
> 100 yards from the Daylesford Train Station (SEPTA Regional Rail)
- Zoning: > C1 Zoning
- Price: > \$505,000

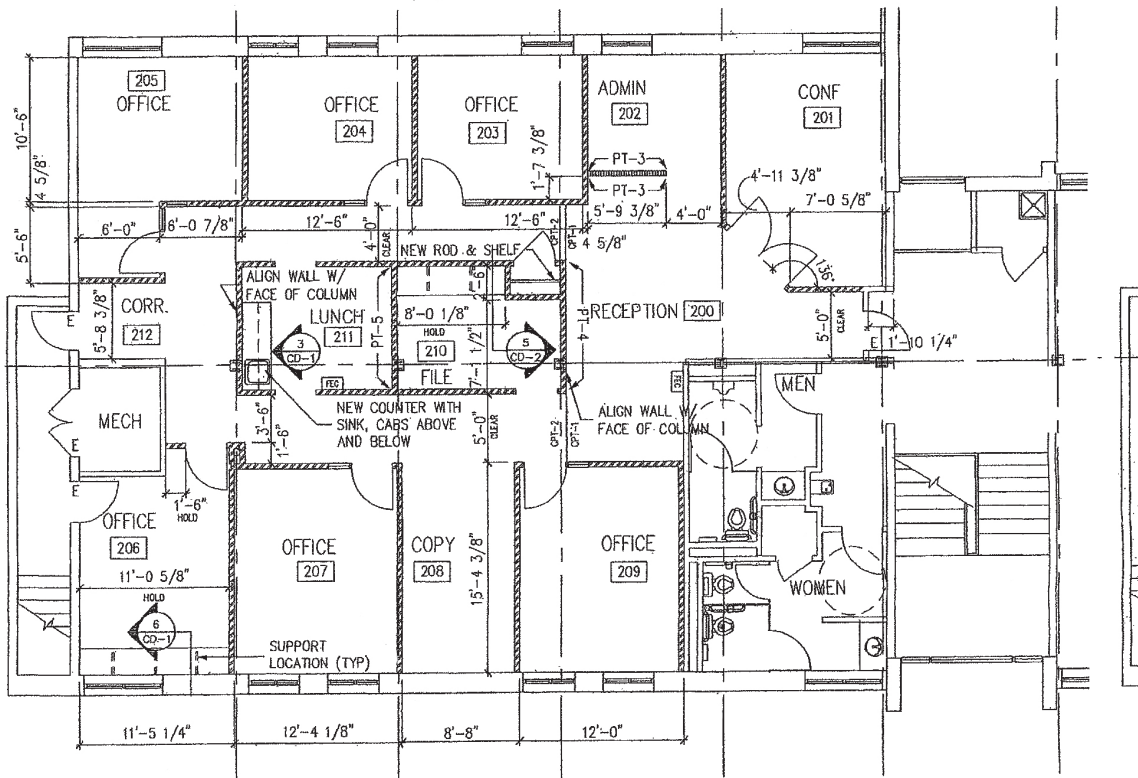
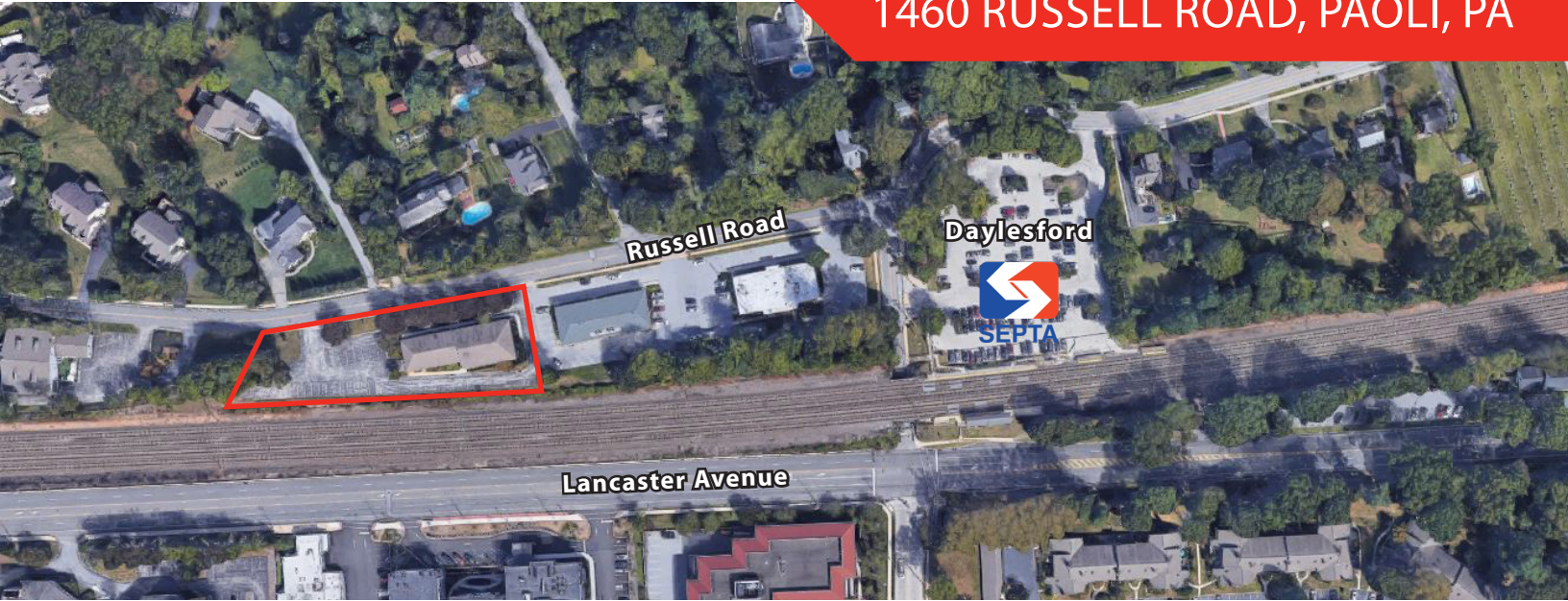


Platinum member

**Scott Williams**, Principal  
D 610.276.3147  
C 610.721.9912  
scott.williams@avisonyoung.com

# RARE OFFICE CONDO SALE OPPORTUNITY: \$505,000

## 1460 RUSSELL ROAD, PAOLI, PA



Intelligent  
Real Estate  
Solutions



Platinum  
member

[avisonyoung.com](http://avisonyoung.com)