

**RATE REDUCED**

**ZEBULON PLAZA**



**6394 Zebulon Road  
Macon, Bibb County, Georgia 31220**

**EBERHARDT & BARRY**



- Located in North Macon off Interstate 475, Exit 9
- **Suite 101 - 4,122 SF Glass Front Retail Space**  
Formerly Crossfit Encompass  
**Base Rent: \$12/PSF, NNN (CAM, T&I: \$3.68/PSF)**  
**Total Monthly Rent: \$5,386.08**
- **Suite 103 - 1,029 SF Glass Front Retail Space**  
Formerly Macon Auto Pawn  
Large open Area                      One (1) restroom  
**Reduced Base Rent: \$14/PSF, NNN (CAM, T&I: \$3.68/PSF)**  
**Total Monthly Rent: \$1,516.06**
- Traffic Count:
  - 26,800 vehicles per day on Zebulon road
  - 41,500 vehicles per day I-475 Northbound
  - 53,100 vehicles per day on I-475 Southbound
- Parking: 63 asphalt paved spaces
- Tenants: AMP, CT Nails, Miracle Ear, Vapor Trail, Marco's Pizza

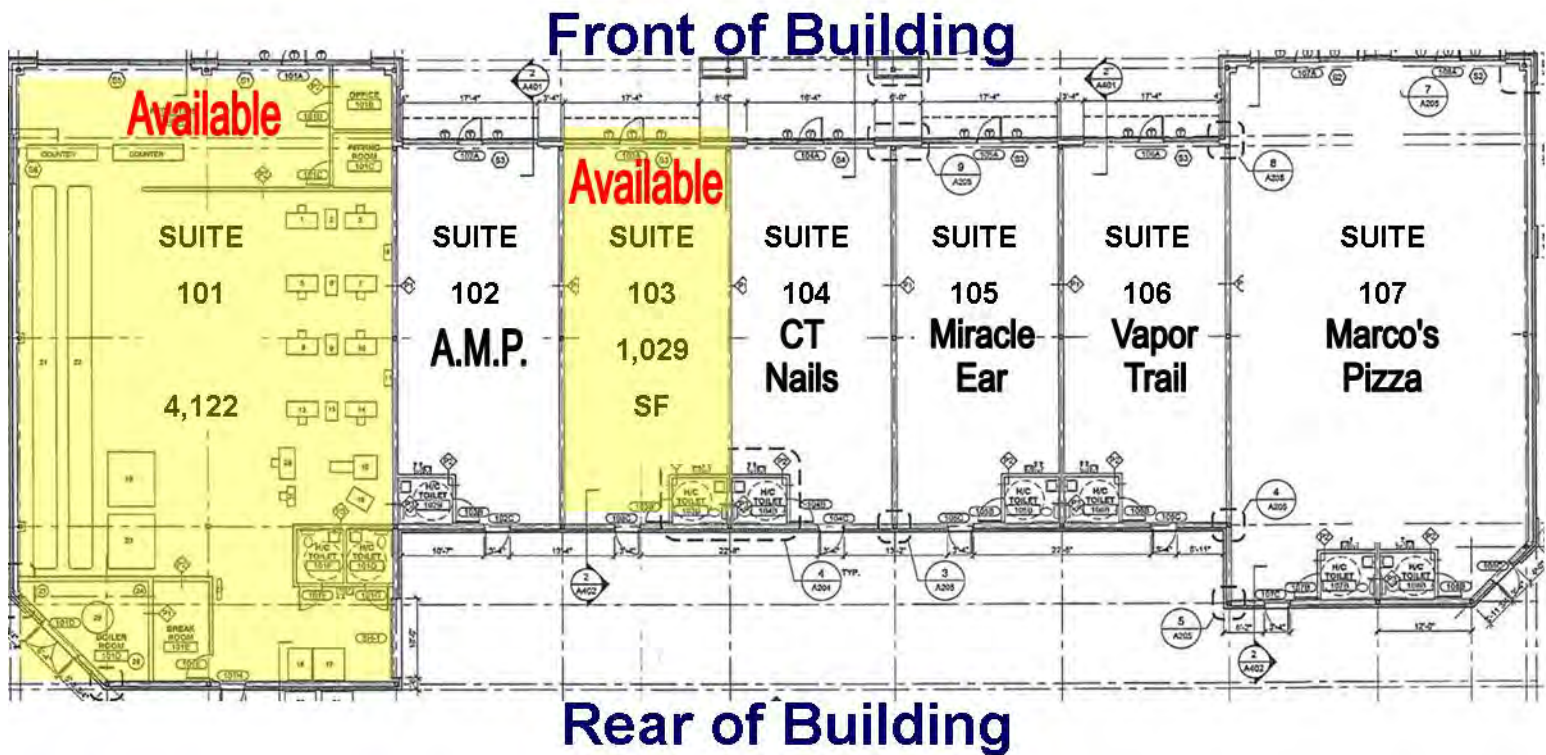
**FOR MORE DETAILS CONTACT:**

Revised 6/30/20

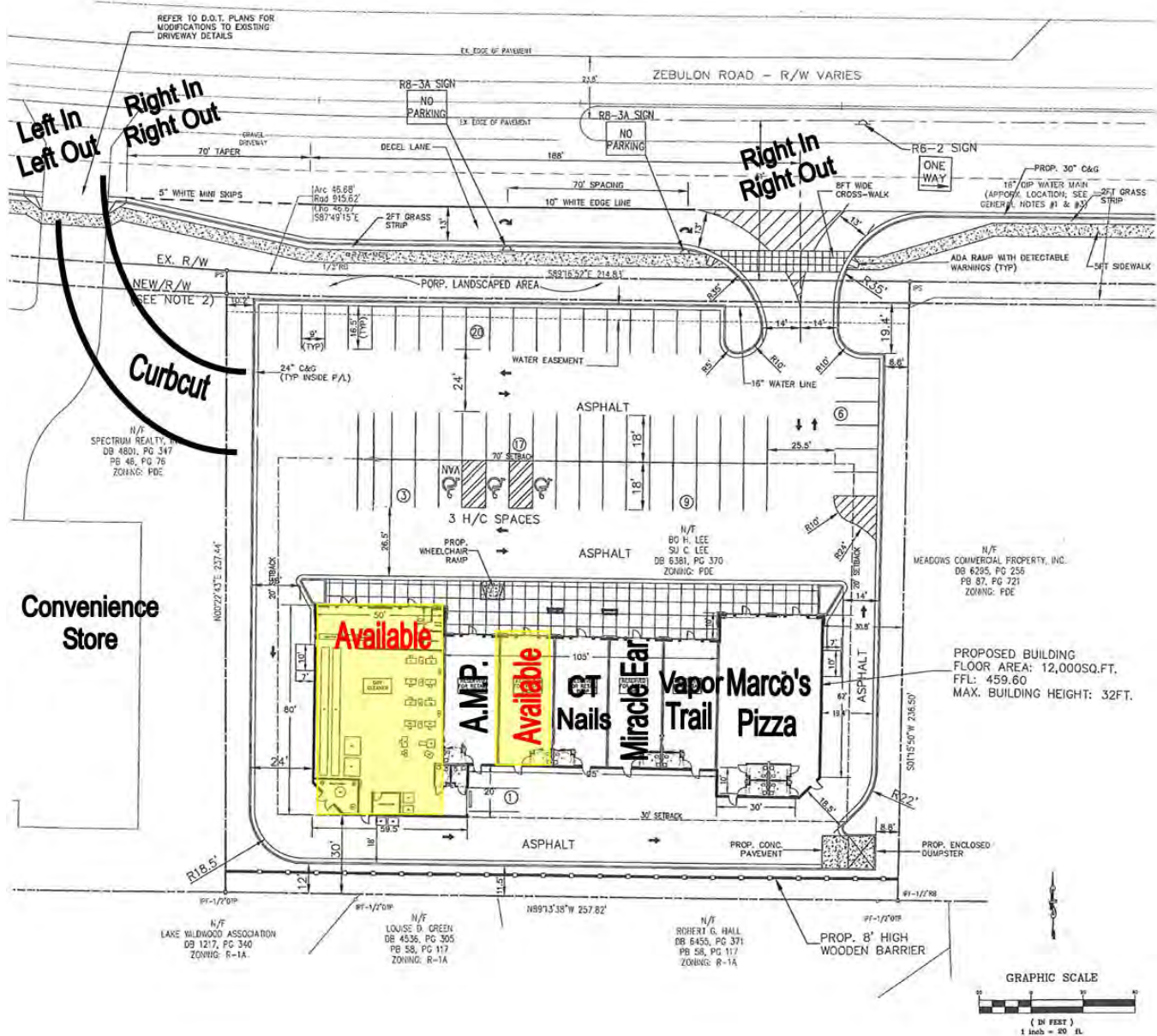
**STEPHANIE FOLSOM, CCIM - EXCLUSIVE AGENT**  
**stephanie@cbcworldwide.com**  
**Coldwell Banker Commercial Eberhardt & Barry Inc.**

**Main** 478-746-8171    **Toll Free** 800-926-0990  
**Fax** 478-746-1362    **Cell** 478-361-8259

990 Riverside Drive  
Macon, GA 31201



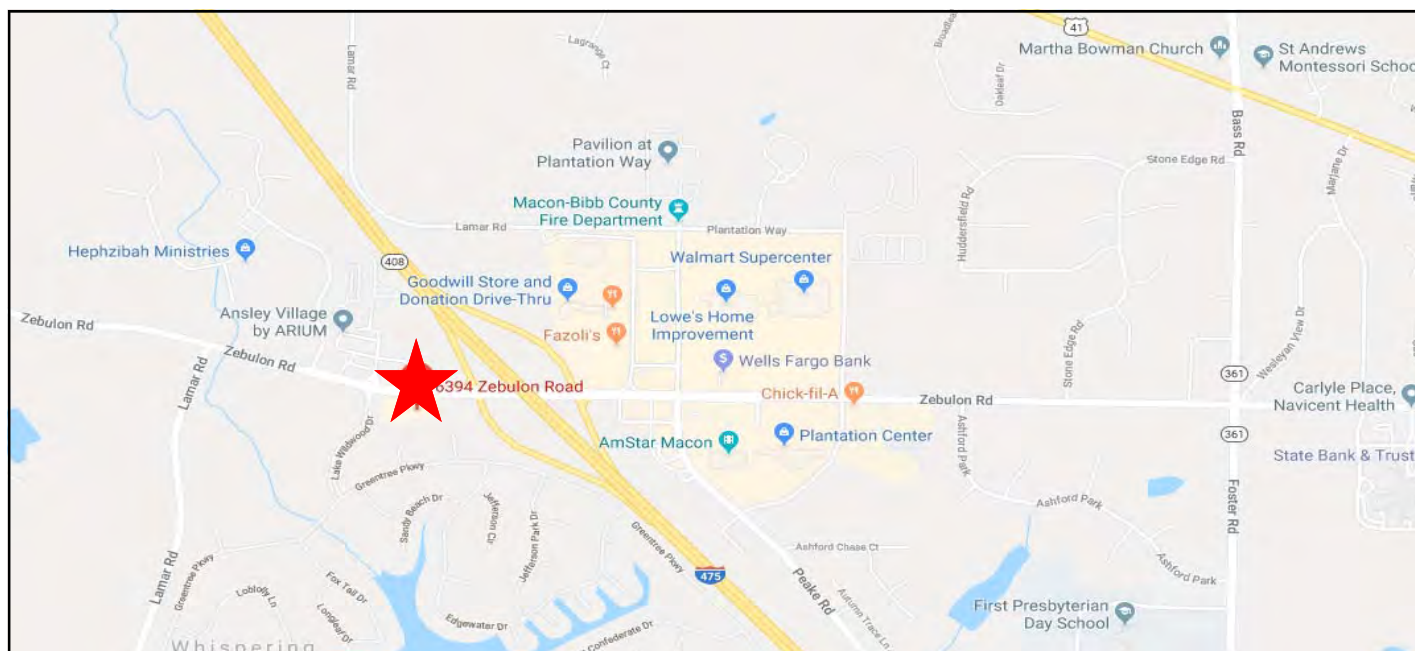






6394 Zebulon Road - Macon, GA 31220

MAPS





## KEY FACTS

18,283

Population



2.5

 Average  
Household Size

42.4

Median Age

\$71,741

 Median Household  
Income

## EDUCATION

6%

 No High  
School  
Diploma


22%

 High School  
Graduate


26%

Some College



46%

 Bachelor's/Grad/Prof  
Degree

## BUSINESS



420

Total Businesses



6,087

Total Employees

## EMPLOYMENT



White Collar

76%



Blue Collar

11%



Services

14%

3.5%

 Unemployment  
Rate

## INCOME



\$71,741

 Median Household  
Income


\$40,141

Per Capita Income



\$197,415

Median Net Worth

## Households By Income

The largest group: \$50,000 - \$74,999 (18.9%)

The smallest group: &lt;\$15,000 (4.0%)

Indicator ▲	Value	Difference	
<\$15,000	4.0%	-13.7%	
\$15,000 - \$24,999	6.3%	-7.2%	
\$25,000 - \$34,999	7.5%	-4.4%	
\$35,000 - \$49,999	15.1%	-0.4%	
\$50,000 - \$74,999	18.9%	+4.6%	
\$75,000 - \$99,999	13.9%	+5.2%	
\$100,000 - \$149,999	18.1%	+7.4%	
\$150,000 - \$199,999	7.2%	+4.1%	
\$200,000+	9.0%	+4.5%	

## KEY FACTS

47,476

Population



2.4

 Average  
Household Size

39.3

Median Age

\$62,332

 Median Household  
Income

## EDUCATION

6%

 No High  
School  
Diploma

 24%  
High School  
Graduate

 26%  
Some College

 44%  
Bachelor's/Grad/Prof  
Degree

## BUSINESS



1,638

Total Businesses



20,601

Total Employees

## EMPLOYMENT



75%

White Collar



11%

Blue Collar



13%

Services

4.0%

 Unemployment  
Rate

## INCOME



\$62,332

 Median Household  
Income


\$38,367

Per Capita Income



\$129,082

Median Net Worth

## Households By Income

The largest group: \$50,000 - \$74,999 (16.6%)

The smallest group: \$150,000 - \$199,999 (5.9%)

Indicator ▲	Value	Difference	
<\$15,000	6.8%	-10.9%	
\$15,000 - \$24,999	8.8%	-4.7%	
\$25,000 - \$34,999	9.3%	-2.6%	
\$35,000 - \$49,999	15.4%	-0.1%	
\$50,000 - \$74,999	16.6%	+2.3%	
\$75,000 - \$99,999	11.9%	+3.2%	
\$100,000 - \$149,999	15.5%	+4.8%	
\$150,000 - \$199,999	5.9%	+2.8%	
\$200,000+	9.8%	+5.3%	