

Westchase Dental/Medical For Lease



Westchase Commons Dental/Medical 13047 W. Linebaugh Ave., Suite 102 | Tampa, FL

- Beautifully appointed former dental office in coveted Westchase Commons
- 1,500 SF - Pre-plumbed and wired for dental or medical use
- Efficient floor plan with up to 4 operatories/exam rooms, large business office, break/patient consult room and private office
- HIPAA compliant check-in/check-out and convenient patient restroom in reception
- Ideally located just East of Race Track Rd. with easy access to and from Hillsborough, Pinellas and Pasco Counties



THERESA MARGARIS
T: 727-238-3876 x305
M: 813-765-0948
tmargaris@holdthyssen.com

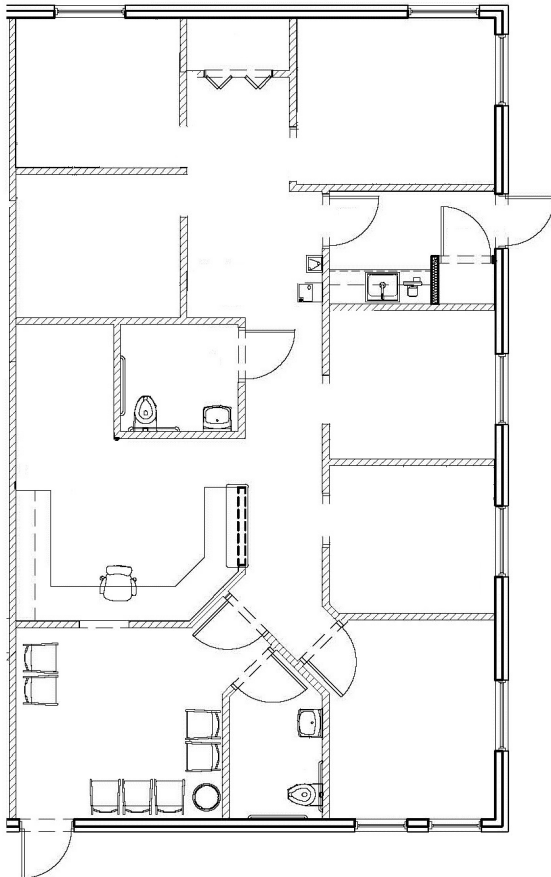
28163 U.S. Highway 19 N.
Suite 102
Clearwater, FL 33761

www.holdthyssen.com

AERIAL



FLOOR PLAN



FOR MORE INFORMATION, VISIT THE LISTING HERE:



THERESA MARGARIS
tmargaris@holdthyssen.com
T: 727-238-3876 x305
M: 813-765-0948

28163 U.S. Highway 19 N.
Suite 102
Clearwater, FL 33761



www.holdthyssen.com