

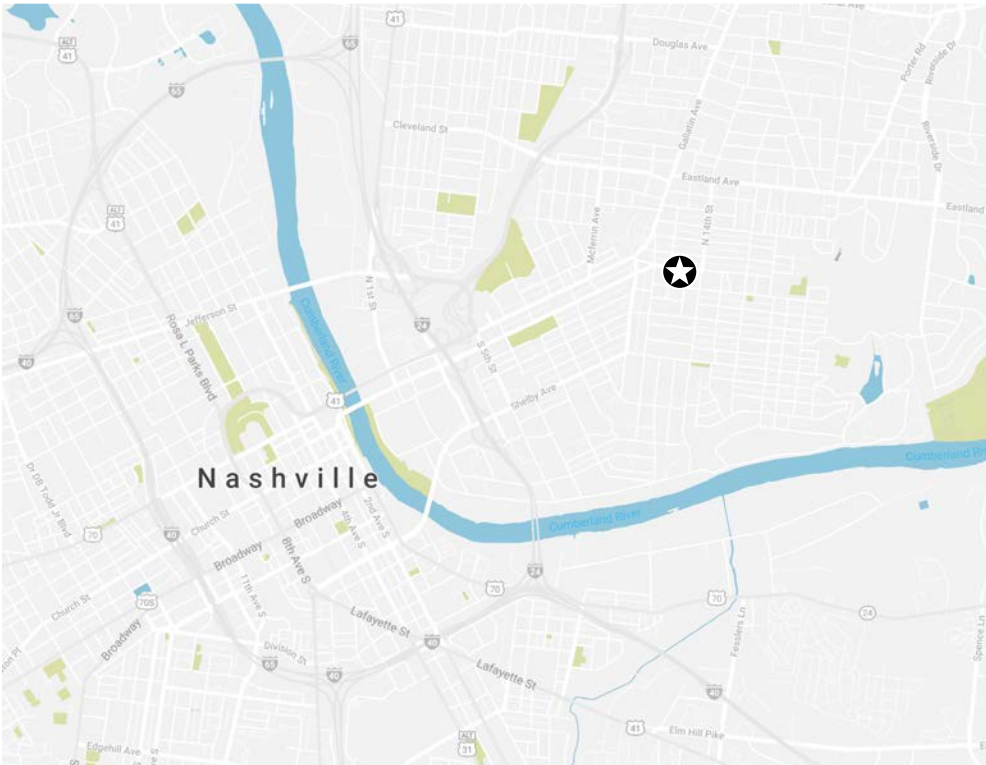


# 1106 WOODLAND

FOR LEASE | 2,282 — 2,895 SF | EAST NASHVILLE

**FOUNDRY**  
COMMERCIAL

# PROPERTY OVERVIEW



## PROPERTY DETAILS

---

<b>Address</b>	1106 Woodland Street Nashville, Tennessee 37206
<b>Sub Market</b>	East Nashville, Five Points
<b>Size</b>	Suite A: 2,282 SF   Suite D: 2,895 SF
<b>Availability</b>	Now available for tenant build-out
<b>Project Team</b>	Center 615   Design 615   Foundry Commercial
<b>Possible Uses</b>	Retail   Creative Office

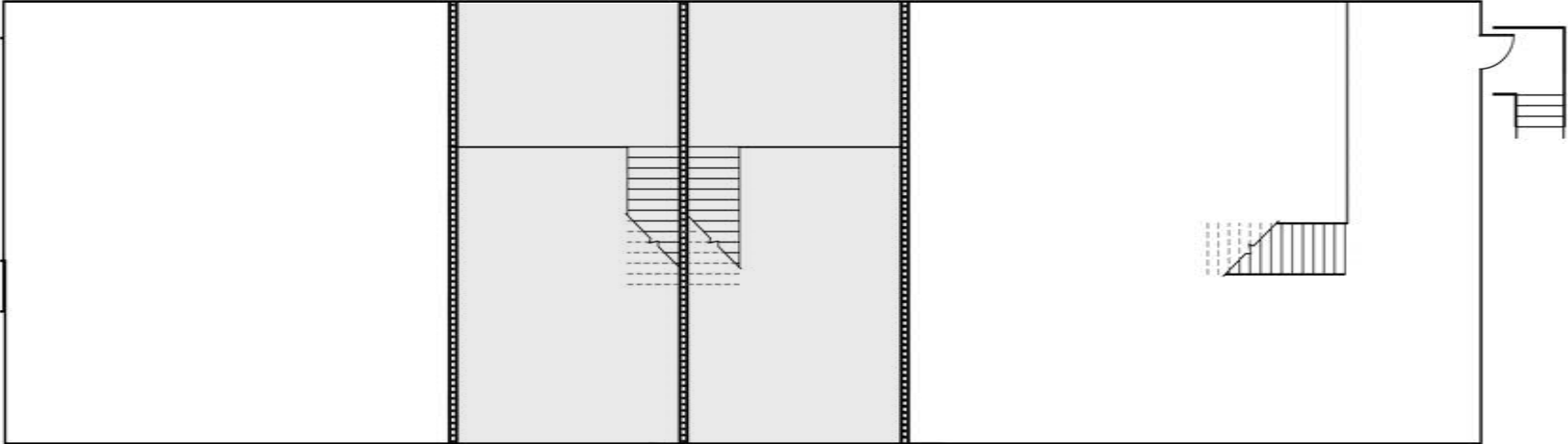
---

## PROPERTY HIGHLIGHTS

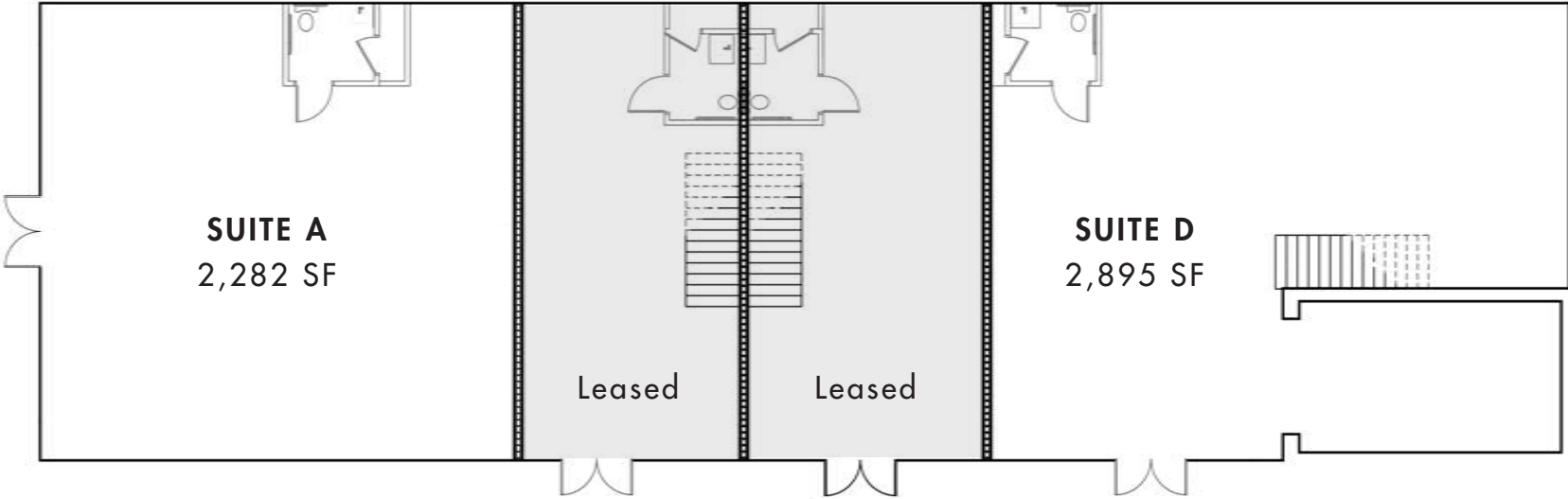
- Prime location at Five Points, the epicenter of East Nashville
- Less than half a mile to interstate access and Downtown Nashville
- Walkable immediate neighborhood - within one block of numerous restaurants, bars, coffee shops, and amenities
- Renovation and modern upgrades for the building almost complete
- Signage opportunity available
- Onsite and street parking available

# TENANT LAYOUT

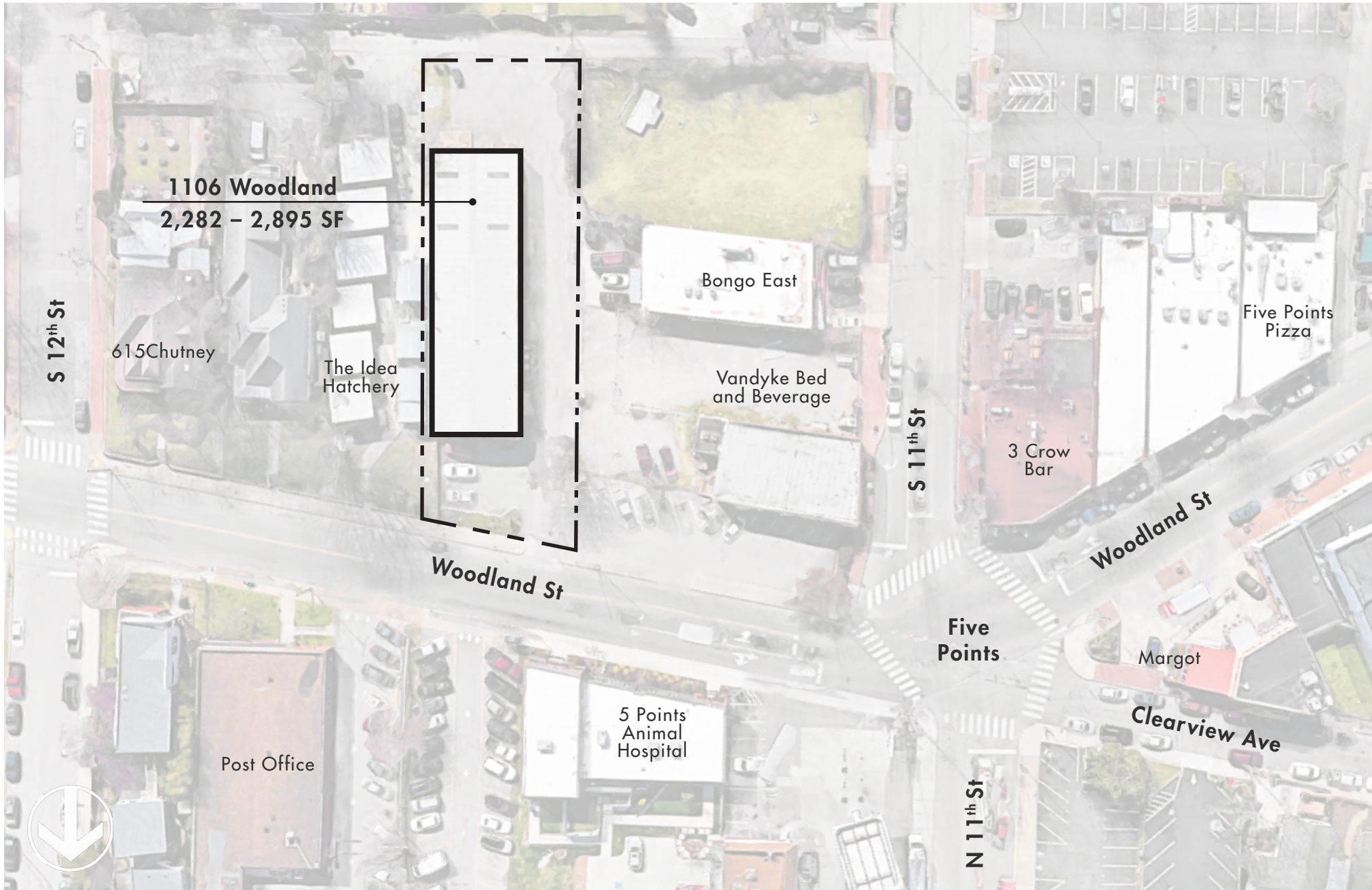
MEZZANINE LEVEL



GROUND LEVEL



# SITE PLAN



# AMENITY MAP

## DINING + DRINKING

- 1 3 Crow Bar
- 2 5 Points Tacos
- 3 5 Spot
- 4 615Chutney
- 5 Attaboy
- 6 Basement East
- 7 Batter'd & Fried
- 8 Bolton's Spicy Chicken & Fish
- 9 Bongo East
- 10 BoomBozz Craft Pizza & Taphouse
- 11 Burger Up
- 12 Butcher & Bee
- 13 Cilantro
- 14 Rosemary & Beauty Queen
- 15 Crying Wolf
- 16 Drifters
- 17 Duke's Bar
- 18 Edley's BBQ
- 19 Filling Station
- 20 Five Points Pizza
- 21 Greko Greek
- 22 Hunters Station
- 23 I Dream of Weenie
- 24 Kawaii Poke
- 25 Koi Sushi & Thai
- 26 Marché Artisan Foods
- 27 Margot
- 28 Nobles Kitchen & Beer Hall
- 29 Pied Piper Creamery
- 30 Red Door Saloon
- 31 Smith & Lentz Brewing
- 32 Maru Sushi
- 33 Wild Cow
- 34 The Soda Parlor
- 35 Treehouse
- 36 Yeast Nashville

## OFFICE + DEVELOPMENTS

- 37 Center 615
- 38 Hill Center Five Points
- 39 Wabash Building & 900 Main
- 40 Shoppes on Fatherland

## RESIDENTIAL + HOTEL

- 41 Amplify on Main Apartments
- 42 East End Lofts
- 43 Eastside Heights Apartments
- 44 Russell
- 45 Stacks on Main Apartments
- 46 Vandyke Bed & Beverage

## WELLNESS + SERVICES

- 47 Candle Bar
- 48 Cumberland Hardware
- 49 Float Horizon
- 50 FLWR Shop
- 51 O.Liv Body Bar
- 52 Rudy's Barbershop
- 53 Scout's Barbershop
- 54 Sips & Strokes
- 55 Turnip Truck
- 56 Woodland Wine Merchant



# THE NEIGHBORHOOD



## EAST NASHVILLE

The growing, thriving, eclectic, historic, and hip East Nashville has become one of the city's most-desired areas to live, work, and play. Its low-key vibe and neighborly personality make this community a great place to escape without leaving town.



1106 WOODLAND STREET  
NASHVILLE, TN

---

ANDREW MAXWELL

ANDREW.MAXWELL@FOUNDRYCOMMERCIAL.COM

615.324.0793

**FOUNDRY**  
COMMERCIAL

foundrycommercial.com

