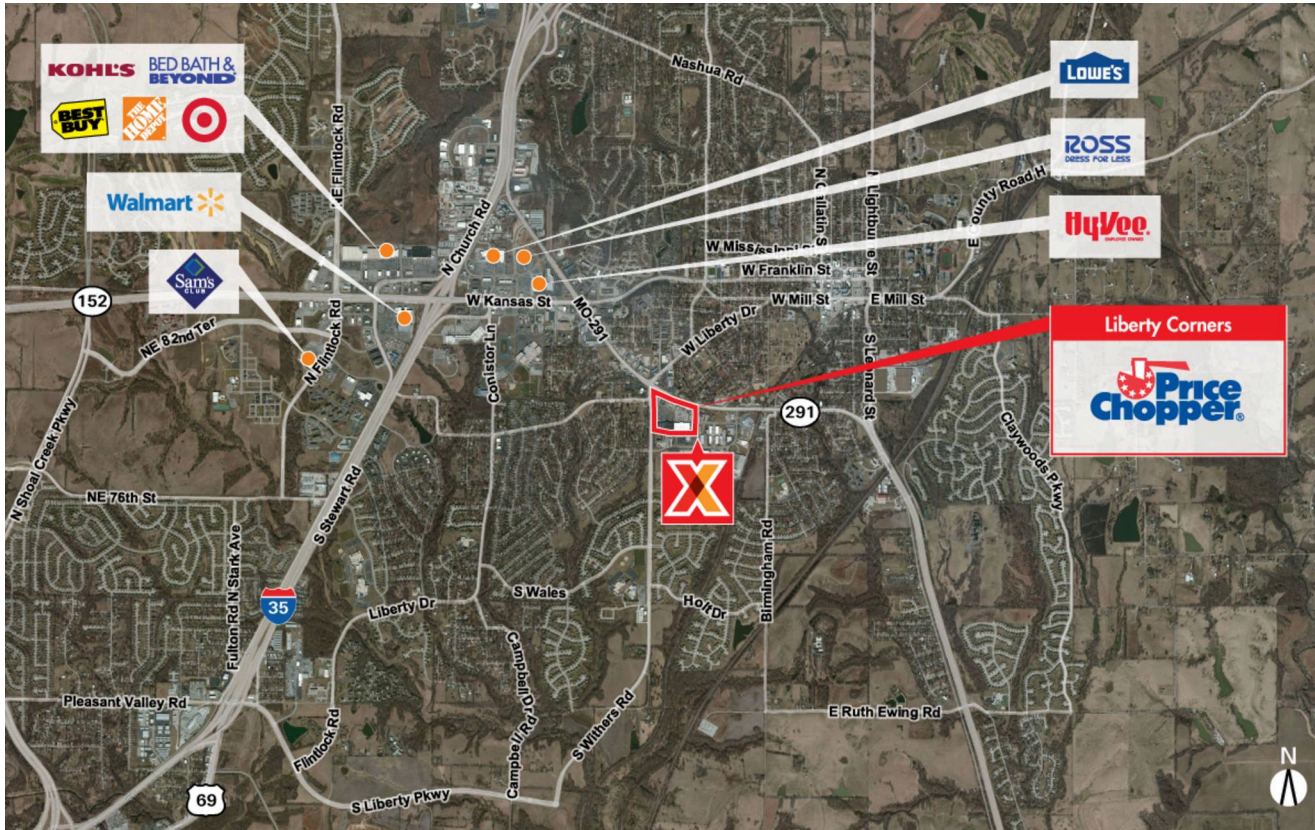


Kansas City, MO-KS

LIBERTY CORNERS

39.236204, -94.434987

840-916 South 291 Highway | Liberty, MO 64068



CENTER SIZE: 124,808 SF



| DEMOGRAPHICS | 1 MILE | 3 MILE | 5 MILE |
|--------------|----------|----------|----------|
| 👤 | 9,632 | 44,497 | 71,678 |
| 🏠 | 3,813 | 16,251 | 26,184 |
| 💰 | \$78,630 | \$89,378 | \$88,913 |

Surrounded by an affluent population with an average household income of \$89,000+ within 3 miles

Price Chopper-anchored center with national retailers including Dollar Tree, GNC, Great Clips & Sally Beauty Supply

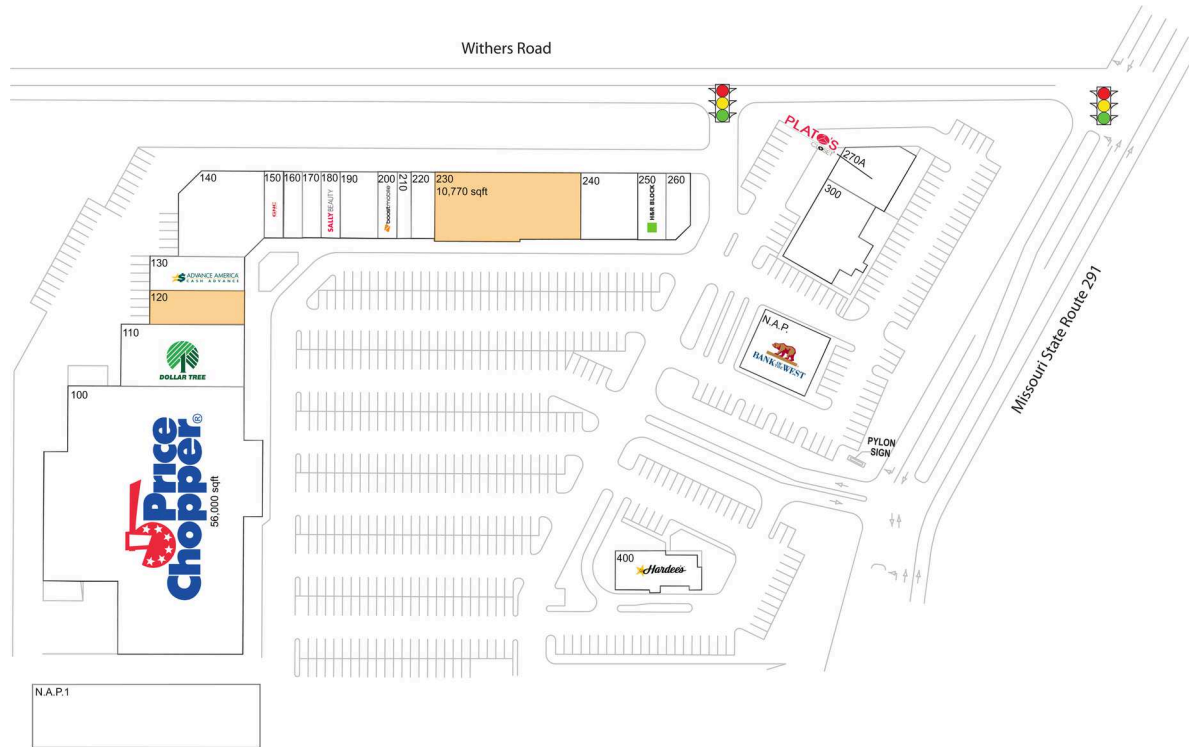
Close proximity to Liberty Triangle, the major retail node in Liberty

New façade renovations completed fall 2017

Kansas City, MO-KS

LIBERTY CORNERS

39.236204, -94.434987
840-916 South 291 Highway | Liberty, MO 64068



AVAILABLE SPACE

| | |
|-----|-----------|
| 120 | 4,500 SF |
| 230 | 10,770 SF |

CURRENT RETAILERS

| | | |
|---------|----------------------------|-----------|
| N.A.P. | Bank of the West | |
| N.A.P.1 | Sutherland | |
| 100 | Price Chopper | 56,000 SF |
| 110 | Dollar Tree | 8,450 SF |
| 130 | Advance America | 2,700 SF |
| 140 | Woodchux | 7,800 SF |
| 150 | GNC | 1,400 SF |
| 160 | Great Clips | 1,400 SF |
| 170 | Tropical Treats and Sweets | 1,400 SF |
| 180 | Sally Beauty Supply | 1,400 SF |
| 190 | Go Pet Go | 2,800 SF |
| 200 | Boost Mobile | 1,400 SF |
| 210 | Beltone Hearing Aids | 1,050 SF |
| 220 | Designer Nail and Spa | 1,750 SF |
| 240 | J&S Pizza | 4,200 SF |
| 250 | H&R Block | 2,100 SF |
| 260 | Biscari Brothers Bicycles | 2,000 SF |
| 270A | Plato's Closet | 3,576 SF |
| 300 | The Big Biscuit | 6,736 SF |
| 400 | Hardee's | 3,426 SF |

4145 - 01.15.19