

# 250

E. OLIVE

BURBANK, CA



CBRE



# property features



79,763 SF, Class A office building



Located in the heart of Downtown Burbank, adjacent to AMC Entertainment Village and Burbank Town Center



Existing tenants include Turner Broadcasting, CBS, Squanch Games, Marza Animation & Formosa Group



Highly-visible signage opportunities with flexible leasing terms



High-end existing improvements including edit bays, blackout shades, exposed ceilings and dark fiber. Ideal for media/entertainment tenants



Convenient access to the 5 Freeway and Downtown Burbank Metro Station





# availability

## SUITE AVAILABILITY

**SUITE 202\***  
4,211 SF

Immediate

**SUITE 203\***  
4,598 SF

Immediate

**SUITE 204**  
2,592 SF

30 day notice

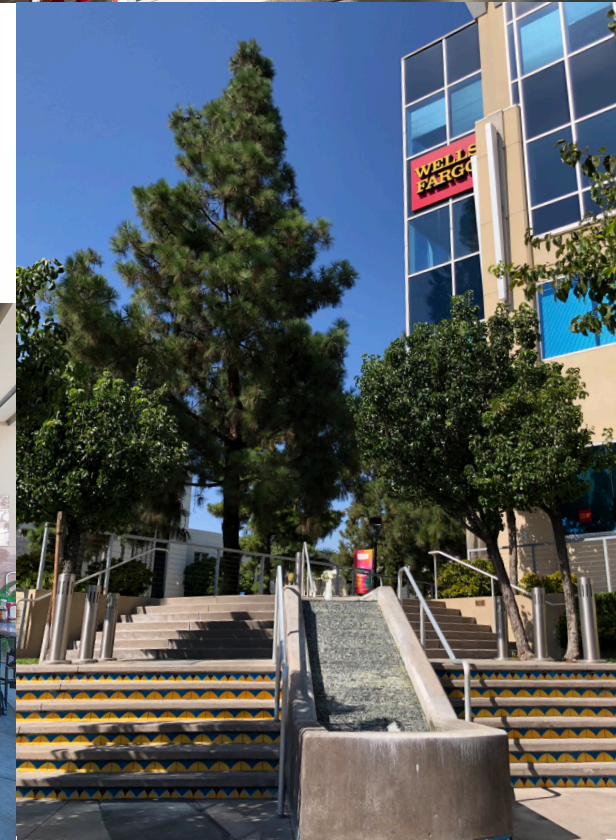
\*Contiguous to 8,809



**CONTACT BROKER FOR  
PRICING DETAILS**

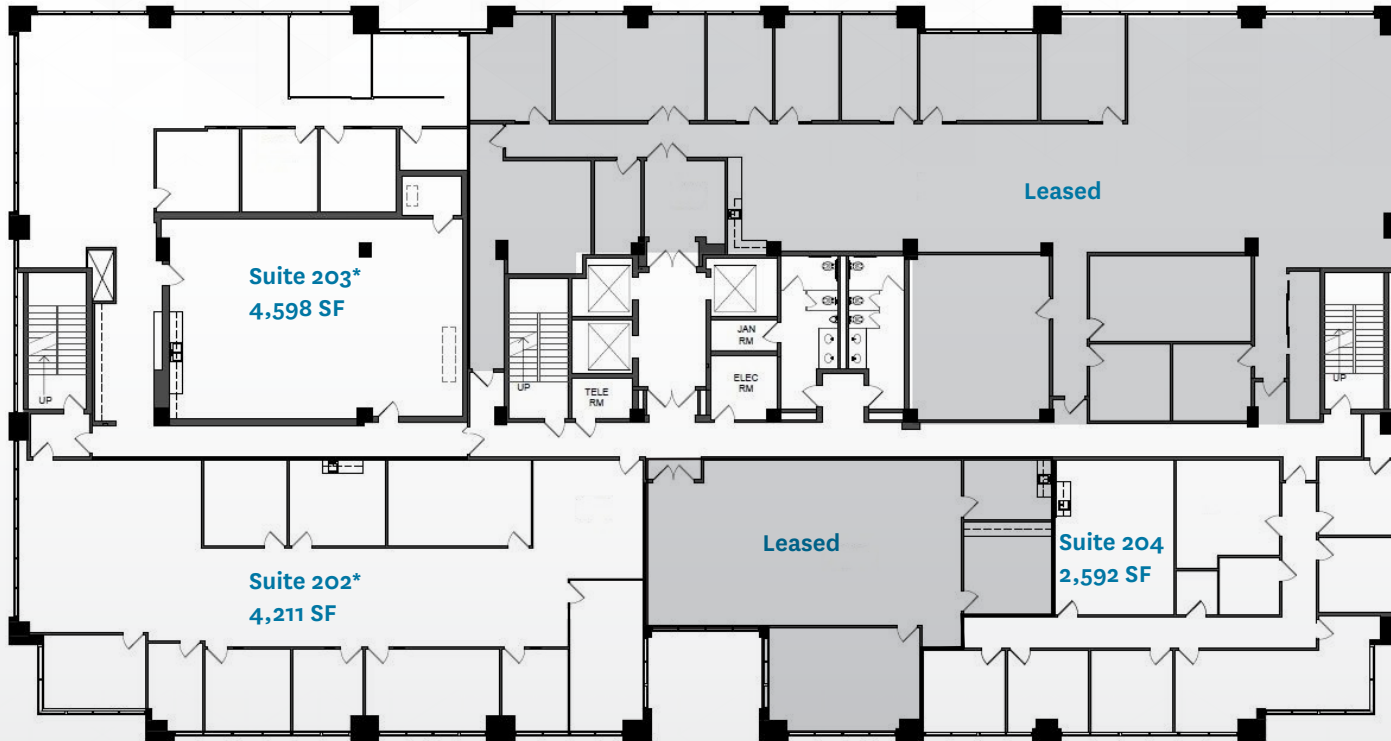
**PARKING**

3/1,000





# floor plans



\*Contiguous to 8,809



Suite 203



Suite 202





**250**  
E. OLIVE

BURBANK, CA

## contacts:

**Jackie Benavidez**

Senior Associate

Lic. 01894070

+1 818 502 6758

jackie.benavidez@cbre.com

**Natalie Bazarevitsch**

Senior Vice President

Lic. 01188604

+1 818 502 6723

natalie.bazarevitsch@cbre.com

**Kevin Duffy**

Senior Vice President

Lic. 01032613

+1 818 502 6724

kevin.duffy@cbre.com

**CBRE**

© 2019 CBRE, Inc. All rights reserved. This information has been obtained from sources believed reliable, but has not been verified for accuracy or completeness. You should conduct a careful, independent investigation of the property and verify all information. Any reliance on this information is solely at your own risk. CBRE and the CBRE logo are service marks of CBRE, Inc. All other marks displayed on this document are the property of their respective owners, and the use of such logos does not imply any affiliation with or endorsement of CBRE. Photos herein are the property of their respective owners. Use of these images without the express written consent of the owner is prohibited.