

FOR LEASE

4227 South Meridian
Puyallup, WA 98373

CAN BE COMBINED
6,312 SF

AVAILABLE
2,800 SF

AVAILABLE
3,512 SF



MERIDIAN PLAZA

Carrie Walker | Justin Holmes

First Western Properties—Tacoma Inc. | 253.472.0404
6402 Tacoma Mall Blvd, Tacoma, WA 98409 | fwp-inc.com

MERIDIAN PLAZA is located just off of Highway 512 in the retail core of Puyallup, WA. The property is situated on the busy corner of Meridian & 43rd Ave SW at the south of the South Hill Mall. Puyallup is home of the Washington State Fair grounds (moments away) and boasts a large population density which makes Meridian Plaza a great site for any Tenant looking for a high traffic location.

4227 SOUTH MERIDIAN:

2,800 SF \$30.00 PSF PLUS NNN (\$10.06)

3,512 SF \$30.00 PSF PLUS NNN (\$10.06)

SPACES CAN BE COMBINED FOR 6,312 SF

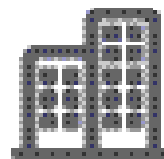
- Located at lighted intersection on Meridian
- Great visibility with high traffic counts
- Wide open and ready for tenants' improvements
- Located a block away from South Hill Mall



Population



Average HH Income



Daytime Population

Regis - 2019

	Population	Average HH Income	Daytime Population
Mile 1	8,126	\$75,111	9,372
Mile 3	84,210	\$92,108	55,080
Mile 5	176,352	\$92,402	104,755

NEARBY TENANTS



LOCATION DETAILS



Located in the South Hill
Retail core



Located moments
from HWY 512

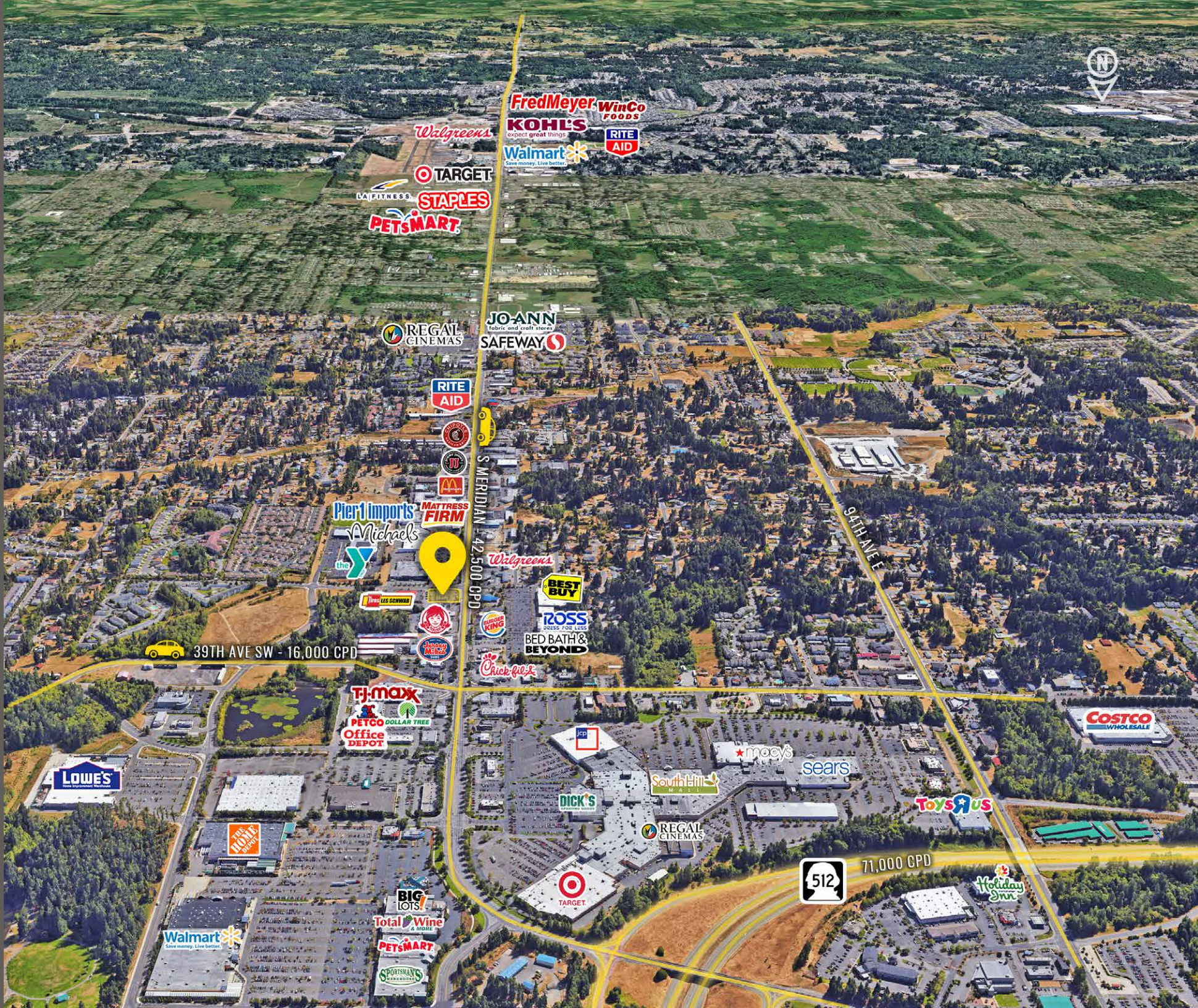


42,500 CPD
S Meridian



9,300 CPD
43rd Ave SE

LOCATION DETAILS



Fred Meyer WinCo FOODS

KOHL'S expect great things

Walmart Save money. Live better.

RITE AID

Walgreens

TARGET

LAIFITNESS

STAPLES

PETSMART

REGAL CINEMAS

JO-ANN Fabric and craft stores

SAFEMART

RITE AID

McDonald's

JC PENNEY

WALGREENS

Pier 1 imports

MATTRESS FIRM

Michaels

the Y

Walgreens

BEST BUY

THE SCHWAB

BURGER KING

TROSS DRESS FOR LESS

BED BATH & BEYOND

39TH AVE SW - 16,000 CPD

Chick-fil-A

TJ-maxx

PETCO DOLLAR TREE

Office DEPOT

JCP

mcey's

sears

COSTCO WHOLESALE

LOWE'S Home Improvement Centers

THE HOME DEPOT

DICK'S Sporting Goods

REGAL CINEMAS

Toys R Us

71,000 CPD

512

Holiday Inn

BIG LOTS!

Total Wine & More

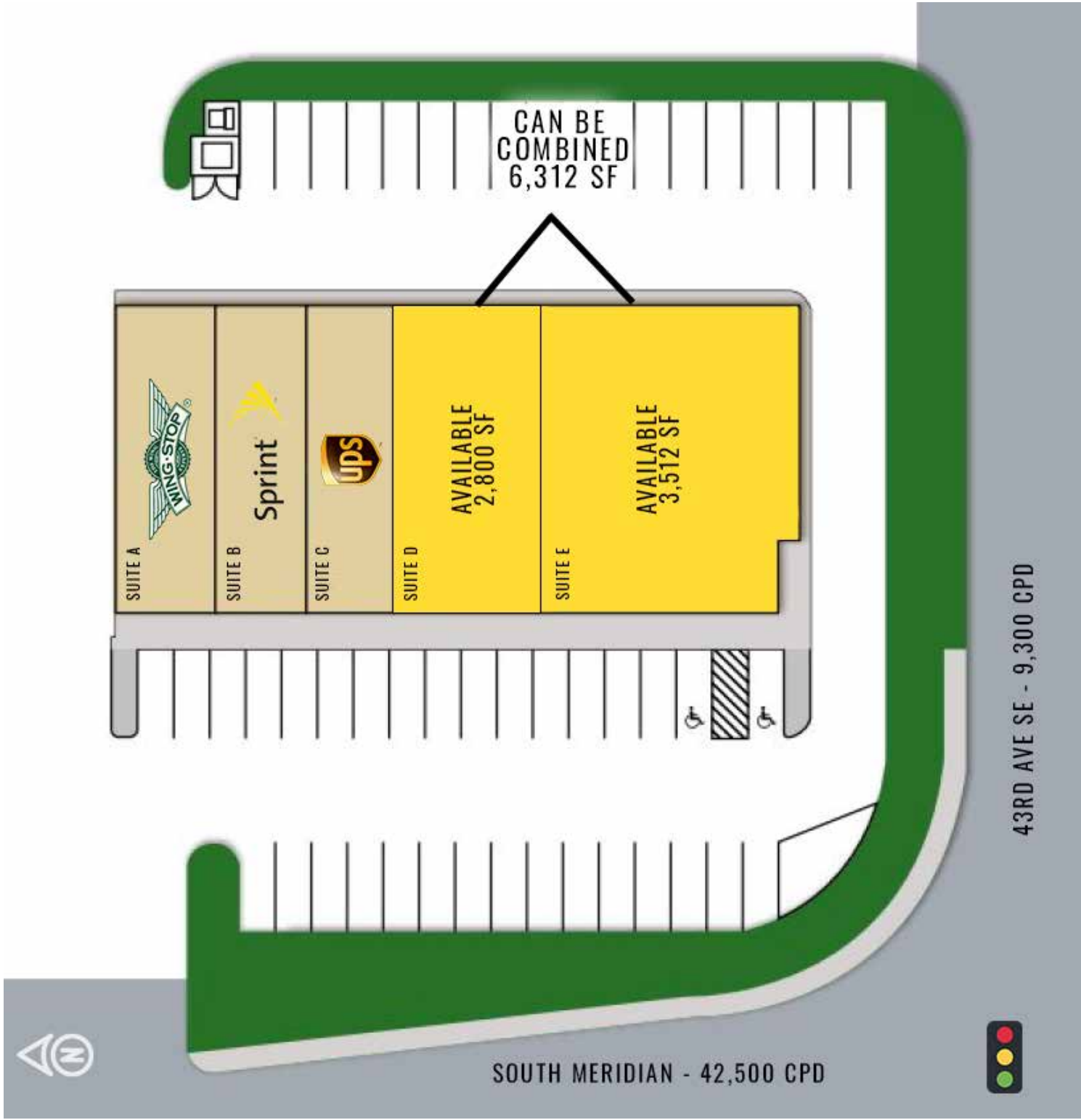
PETSMART

Walmart Save money. Live better.

SPORTSMAN'S

TARGET

SITE PLAN





PUYALLUP, WA is just 35 miles south of Seattle situated at the foot of scenic Mount Rainier. Puyallup plays host to the Washington State Fair, where over one million people attend each September. The city has a rich agricultural past but there is much more to Puyallup than meets the eye. The retail shopping centers, dining opportunities and a modern regional medical center are just some of the many amenities appreciated by residents and visitors.

TACOMA | KIRKLAND | PORTLAND | SEATTLE



RETAIL FOCUSED. RESULTS DRIVEN.

CARRIE WALKER

253.284.3644
carrie@firstwesternproperties.com

JUSTIN HOLMES

253.447.2282
justin@firstwesternproperties.com



First Western Properties—Tacoma Inc. | 253.472.0404
6402 Tacoma Mall Blvd, Tacoma, WA 98409 | fwp-inc.com

© First Western Properties, Inc. DISCLAIMER: The above information has been secured from sources believed to be reliable, however, no representations are made to its accuracy. Prospective tenants or buyers should consult their professional advisors and conduct their own independent investigation. Properties are subject to change in price and/or availability without notice.