

# ±15,246 SQ. FT. OF LAND FOR SALE

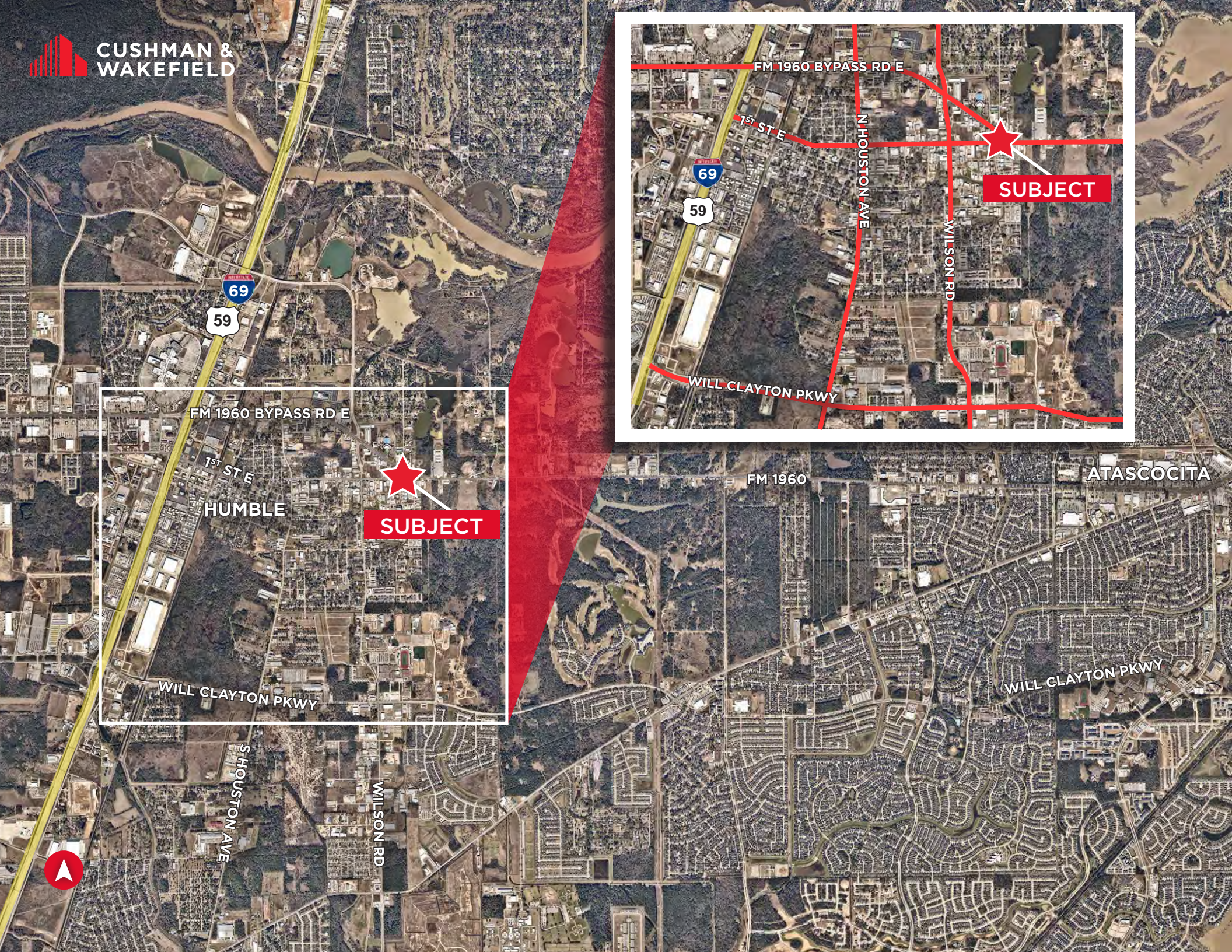
FM 1960 BY-PASS RD E & 1ST STREET  
HUMBLE, TX 77338

**CUSHMAN &  
WAKEFIELD**

CALL BROKER FOR PRICING

- Frontage on FM 1960 By-Pass Road East: ± 165'
- Approximately 1 ½ miles east of US 59/I-69
- Approximately 1 mile east of the city of Humble & 4 miles west of the city of Atascocita
- Less than 5 miles to George Bush International Airport
- Part of the Humble ISD - Humble High School & Ross Sterling Middle School
- HCAD #: 0431500190060





FM 1960 ATASCOCITA

WILL CLAYTON PKWY

WILL CLAYTON PKWY

HUMBLE

FM 1960 BYPASS RD E

69

59

1ST ST E

HOUSTON AVE

WILSON RD

FM 1960

FM 1960 BYPASS RD E

1ST ST E

N HOUSTON AVE

WILSON RD

WILL CLAYTON PKWY

SUBJECT

SUBJECT

# PROPERTY DETAILS

The site is located just east of the city of Humble, Harris County, Texas and is within the Houston metropolitan area. Famously, Humble became an oil boomtown in the early 20th century when oil was first discovered there in 1904. By 1905, the Humble oilfield was the largest producing oilfield in Texas. Humble was home of Humble Oil, a predecessor of Exxon.

## DEMOGRAPHICS

	3 MILE	5 MILE	10 MILE
<b>Population Summary</b>			
2021 Total Population	43,367	176,033	505,418
2026 Total Population	46,987	194,705	552,943
<b>Median Age</b>			
2021	33.1	33.8	33.4
2026	32.9	33.7	33.7
<b>2021 Households by Income</b>			
Average Household Income	\$75,886	\$95,469	\$93,562
<b>2026 Households by Income</b>			
Average Household Income	\$84,661	\$106,809	\$104,500



## CONTACT INFORMATION

**MEREDITH T. CULLEN**  
Director  
+1 713 331 1809  
meredith.cullen@cushwake.com

**DAVID L. COOK, SIOR, CRE**  
Vice Chairman  
+1 713 963 2888  
david.cook@cushwake.com