

# newark TECH-PARK

New Ownership  
10 Minutes from Palo Alto

**8100 Jarvis Avenue**  
Stand Alone Building  
±49,580 SF divisible to ±24,530 SF

**CHRIS SHAFFER**  
408.982.8451  
cshaffer@ngkf.com  
CA RE Lic #00902221

**STEVE KAPP**  
510.300.0213  
skapp@ngkf.com  
CA RE Lic #01069911

**CURTIS STAHL**  
510.300.0222  
cstahle@ngkf.com  
CA RE Lic #01955258

**RANDY SCOTT**  
650.688.8510  
rscott@ngkf.com  
CA RE Lic #00852506

# newark TECH-PARK

## PROJECT HIGHLIGHTS

- New Ownership
- Heavy Capital Improvements Planned
- High image headquarters type campus
- Two separate buildings totaling ±99,750 SF
- Located at foot of Dumbarton Bridge - Only 10 minutes to Palo Alto!
- High quality steel frame / glass curtain wall construction - built in 2001
- Adjacent to Pacific Research biotech campus and Aloft Hotel
- 4 /1,000 parking ratio
- Nearby retail amenities

- High Speed Data Service (TI Lines and Fiber Optic Services - now with Comcast Business Internet)
- Centrally located in the Bay Area with close driving access to all three major airports (OAK, SFO, SJC)

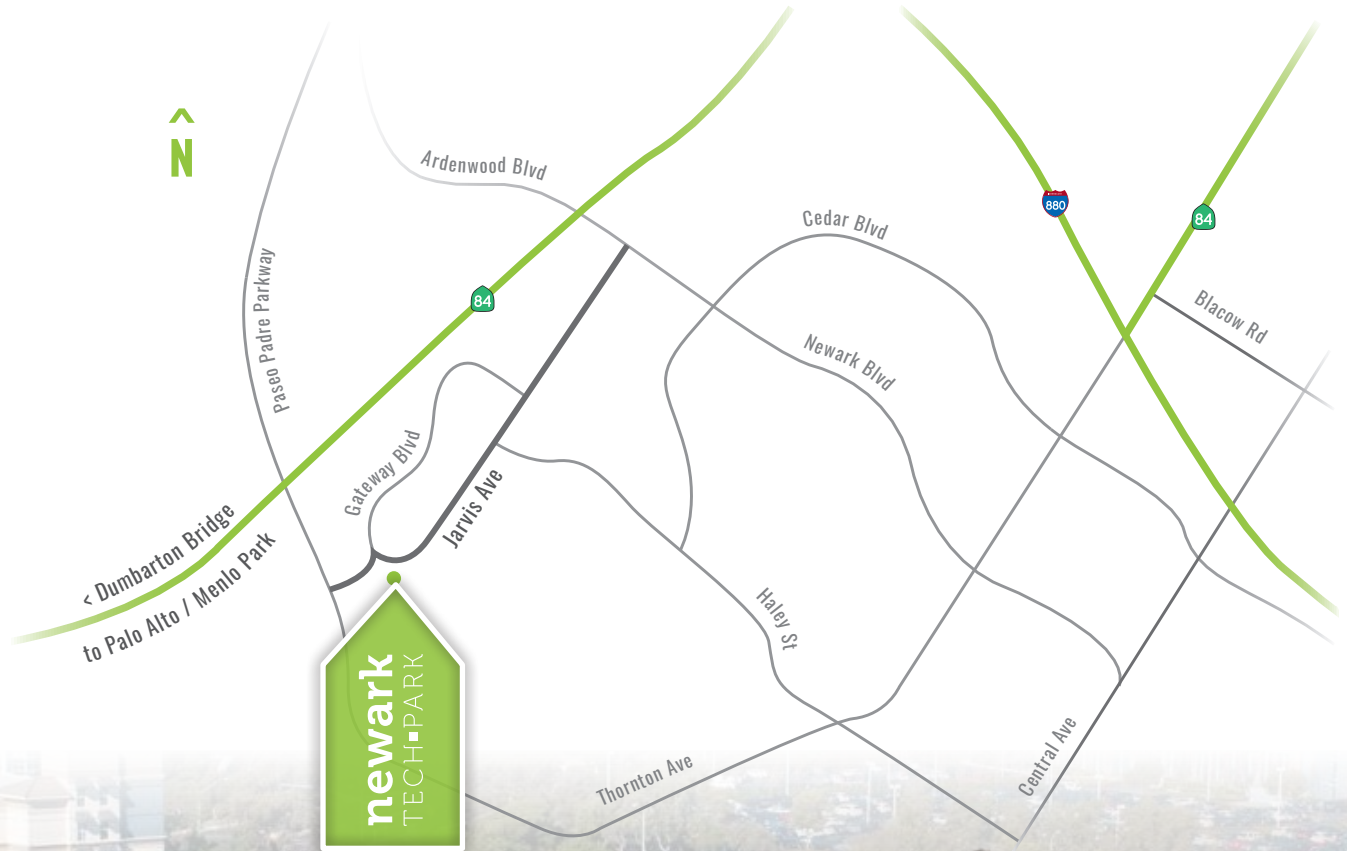
8100  
Jarvis

8000  
Jarvis



# newark TECH-PARK

## LOCATION



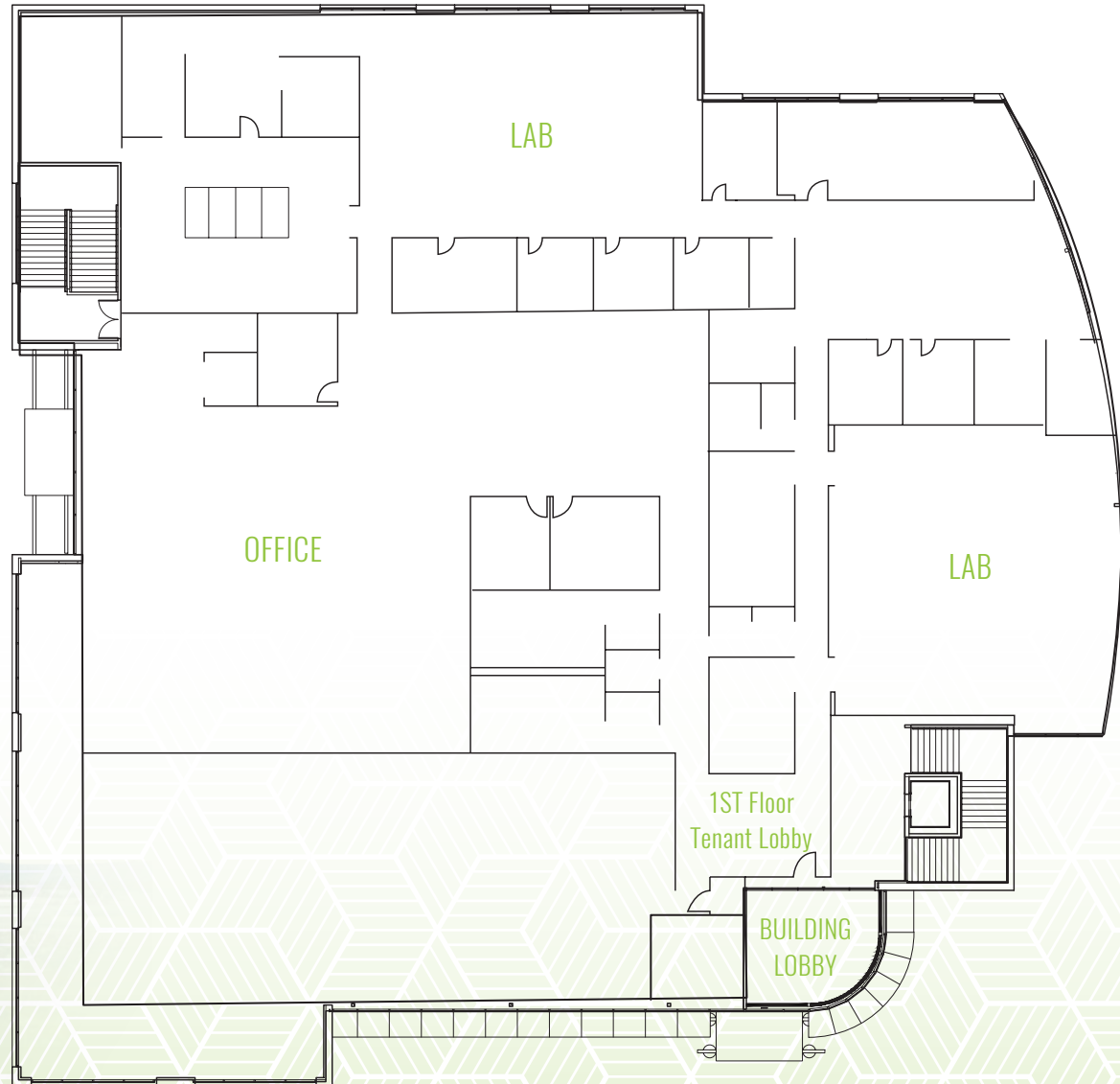
# newark

TECH-PARK

8100  
Jarvis Ave

1st  
FLOOR  
±24,530 SF

Will provide solutions to  
Life Science Requirements



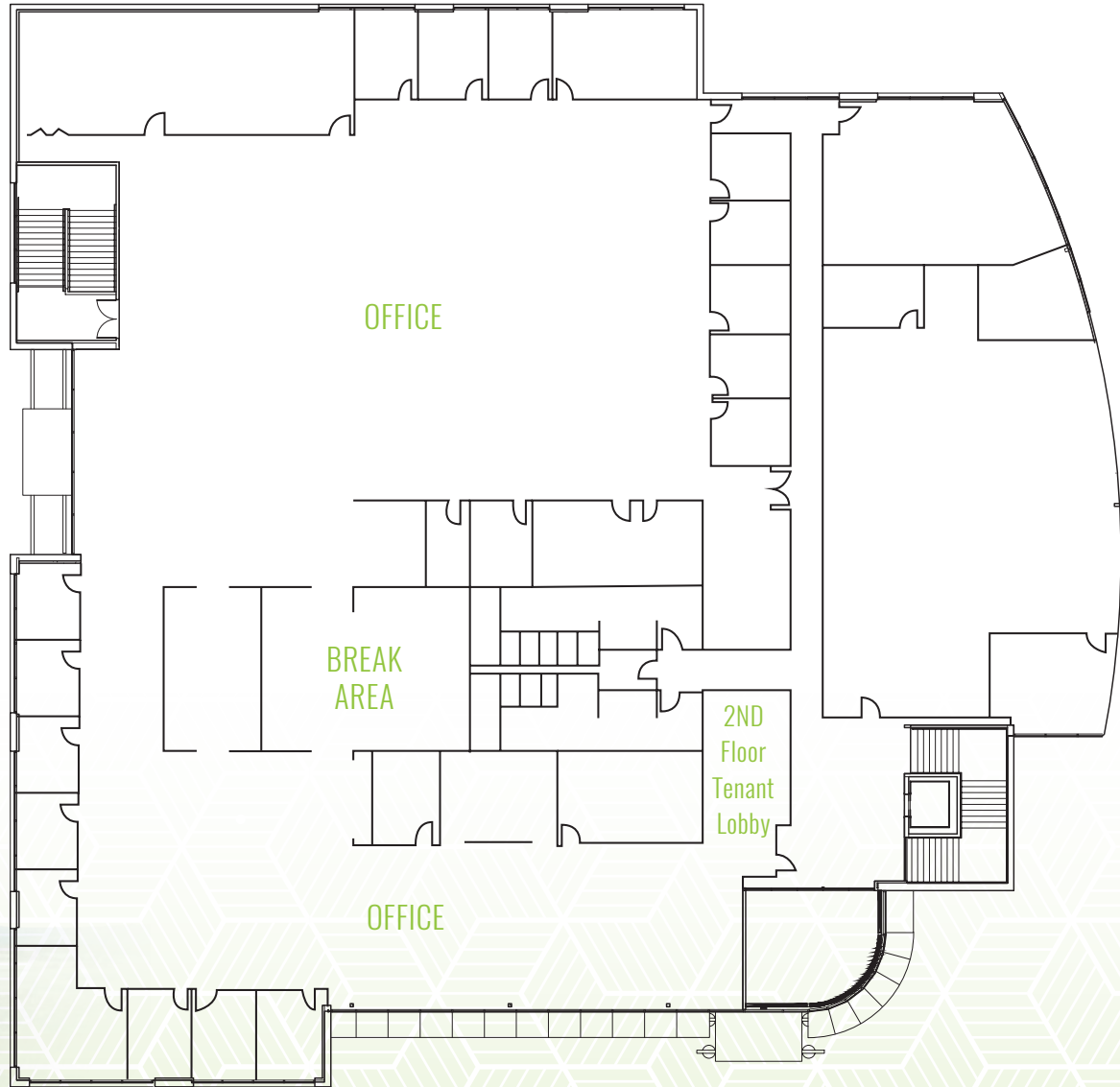
# newark

TECH PARK

8100  
Jarvis Ave

2nd  
FLOOR  
±25,050 SF

Will provide solutions to  
Life Science Requirements



OAKLAND

FREMONT

SAN JOSE

ARDENWOOD

NEWARK

N



ARDELYX

ZOSANO

COURTYARD

Marriott

OMRON

ADIENT

a Johnson & Johnson company

Boehringer Ingelheim

efi

kateeva



Boehringer Ingelheim



TE connectivity

Kellogg's

to Palo Alto

relevance

RMS

Stanford HEALTH CARE

Logitech

A&C

aloft



newark  
TECH-PARK

- |                              |                              |                               |                        |
|------------------------------|------------------------------|-------------------------------|------------------------|
| 1 King of Thai Noodles House | 10 Pier 98 Sushi Bar & Grill | 19 Chopsticks Pho & Grill     | 28 Johnny's Pub        |
| 2 Pizza Italia               | 11 Sweethoney                | 20 Oasis Palace               | 29 CVS                 |
| 3 Miaos Deli                 | 12 Anytime Fitness           | 21 Newark Café                | 30 Starbucks           |
| 4 Chatpatta Corner           | 13 Sprouts                   | 22 Ranch 99 Market            | 31 McDonald's          |
| 5 Jack in the Box            | 14 Burger King               | 23 Little Sichuan             | 32 Fairwood Café       |
| 6 Chipotle                   | 15 Cham Sae Bistro           | 24 Starbucks                  | 33 Taquería Los Gallos |
| 7 Tasty Pot                  | 16 Vitality Bowls            | 25 Safeway                    | 34 Domino's Pizza      |
| 8 Campanella Italian Cuisine | 17 Del Taco                  | 26 Mr. Pickle's Sandwich Shop |                        |
| 9 Pizza Hut                  | 18 Chan's Kitchen            | 27 Panda Express              |                        |

The distributor of this communication is performing acts for which a real estate license is required. The information contained herein has been obtained from sources deemed reliable but has not been verified and no guarantee, warranty or representation, either express or implied, is made with respect to such information. Terms of sale or lease and availability are subject to change or withdrawal without notice. 14-0752 | 11/19

3055 Olin Avenue, Suite 2200  
San Jose, CA 95128 | www.ngkf.com

