

Winter Park Office For Lease



W. Morse Office Building

851 W. Morse Avenue | Winter Park, FL 32789

- 4,536 SF single story office building
- Open floor plan
- 27 parking spaces, 1 handicap space
- Sits just off of Park Avenue in the heart of Winter Park on Morse Blvd.
- Ideal location with highly visible signage
- Contact Agent for leasing rates

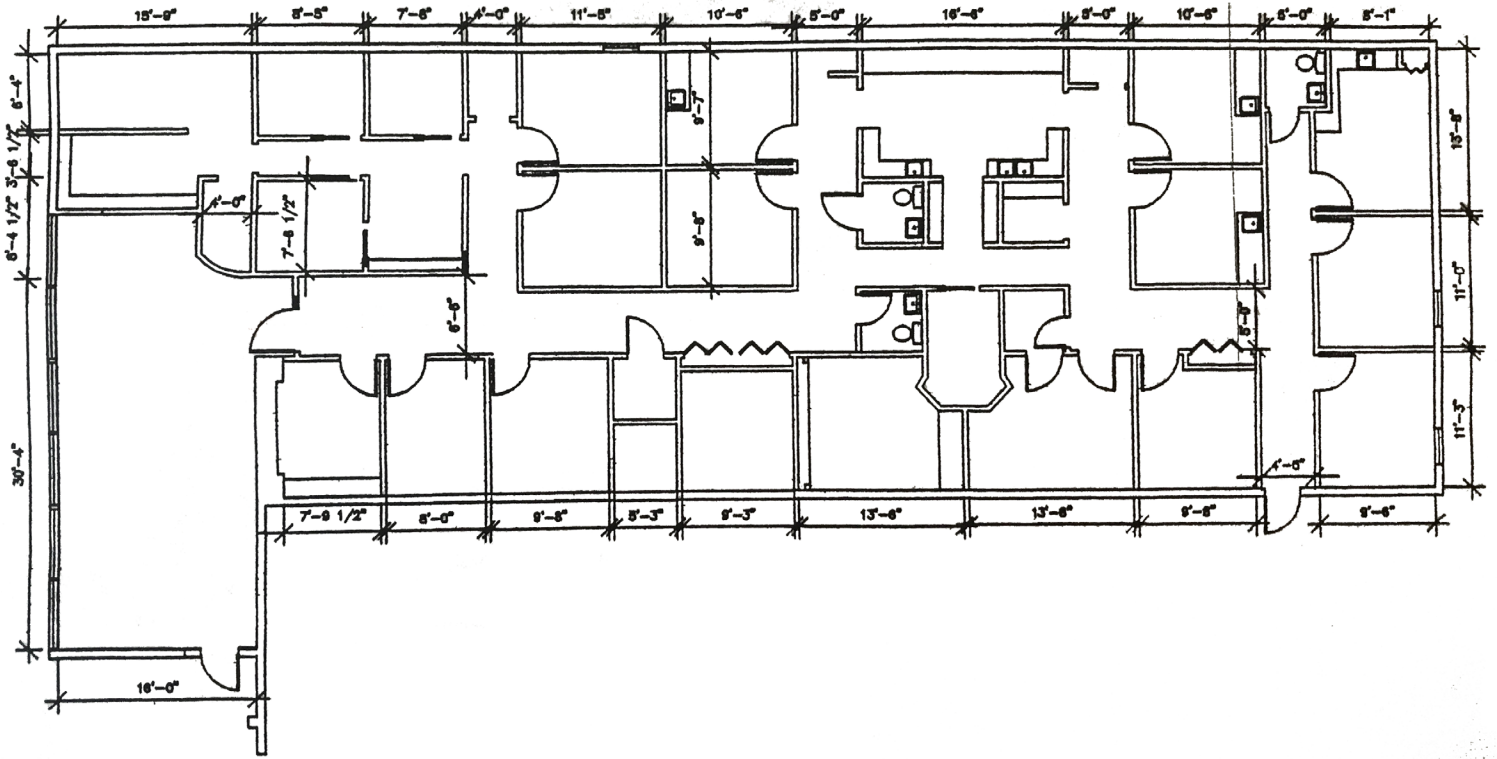


BOB HOLD
T: 407-691-0505
bhold@holdthyssen.com

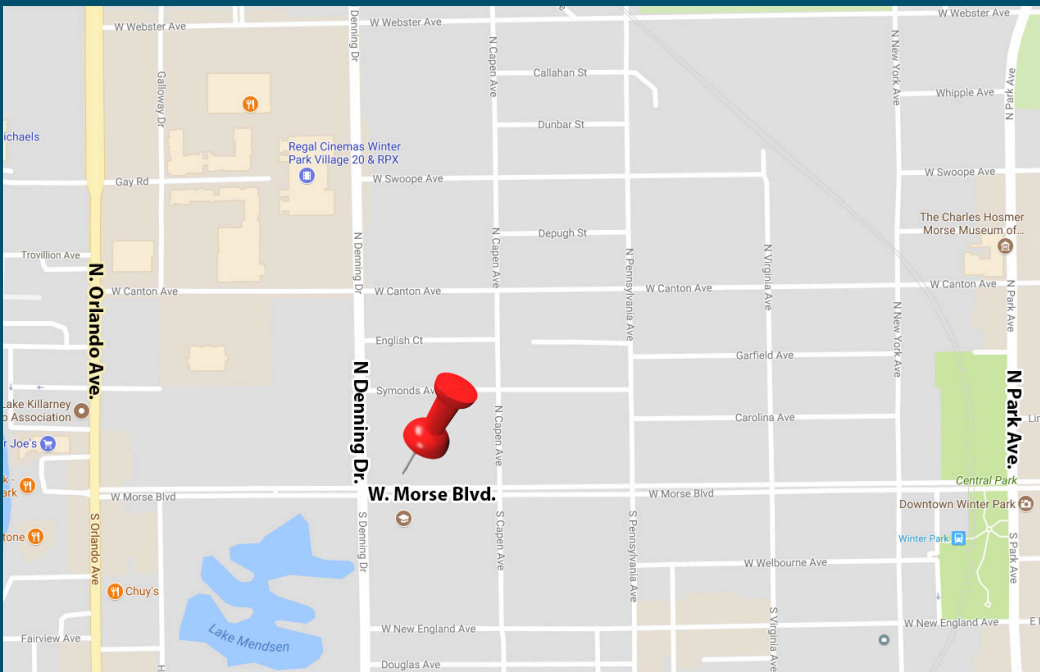
301 S. New York Ave.
Suite 200
Winter Park, FL 32789

www.holdthyssen.com

FLOOR PLANS



LOCATION



FOR MORE INFORMATION:



BOB HOLD
bhold@holdthysen.com
T: 407-691-0505

301 S. New York Avenue
Suite 200
Winter Park, FL 32789



The information above has been obtained from sources believed reliable. While we do not doubt its accuracy we make no guarantee, warranty or representation about it. It is your responsibility to independently confirm its accuracy and completeness. Any projections, opinions, assumptions, or estimates used are for example only and do not represent the current or future performance of the property. Hold-Thysen, Inc. is a licensed real estate broker.

www.holdthysen.com