

THE STANDARD AT AUBURN

206 N. Gay Street, Auburn, AL 36830

EXECUTIVE SUMMARY



LOCATION OVERVIEW

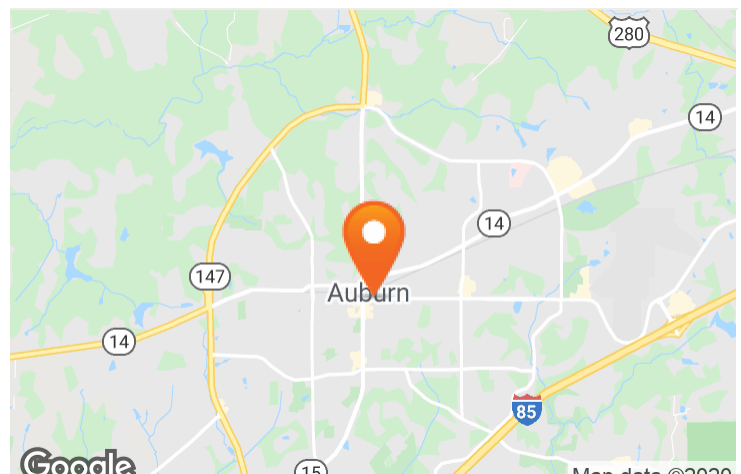
Located at the northeast corner of N. Gay Street and E. Glenn Avenue.

PROPERTY HIGHLIGHTS

- 15,712 square feet of ground floor retail.
- Ample parking available.
- Upscale student housing above with 219 units and 683 beds; 79% of undergrads live off campus.
- AU football games bring 100,000+ visitors with annual economic impact of nearly \$100 million.
- Mixed-use development servicing Auburn University with enrollment of 29,776 students, 11,864 enrolled during summer.
- Auburn University campus is 0.2 miles SW of The Standard and has an \$800 Million economic impact annually including university payroll, local student spending and visitor spending at university events.

DEMOGRAPHICS

	3 MILES	5 MILES	10 MILES
2019 Population	50,260	71,150	107,466
2019 Daytime Population	59,702	81,612	113,717
2019 Average HH Income (\$)	\$62,522	\$66,839	\$67,846



EXCLUSIVE AGENT(S)

DAVID ASHFORD, CCIM • david.ashford@tscg.com • 205.870.5655

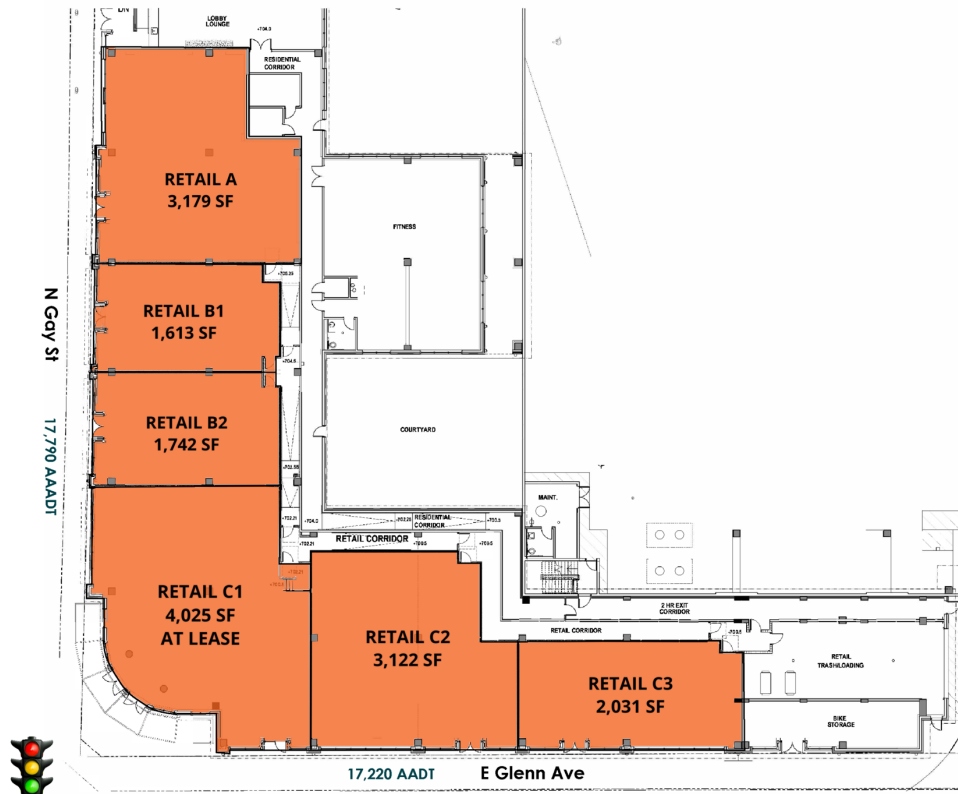
STEPHANIE MCCULLOUGH • stephanie.mccullough@tscg.com • 904.565.2635

KELLY PULIGNANO • kelly.pulignano@tscg.com • 904.565.2635

THE STANDARD AT AUBURN

206 N. Gay Street, Auburn, AL 36830

SITE PLAN



SUITE	TENANT NAME	SPACE SIZE
A	Available	3,179 SF
B1	Available	1,613 SF
B2	Available	1,742 SF
C1	Available	4,025 SF
C2	Available	3,122 SF
C3	Available	2,031 SF

EXCLUSIVE AGENT(S)

DAVID ASHFORD, CCIM • david.ashford@tscg.com • 205.870.5655

STEPHANIE MCCULLOUGH • stephanie.mccullough@tscg.com • 904.565.2635

KELLY PULIGNANO • kelly.pulignano@tscg.com • 904.565.2635

The Standard at Auburn

206 N Gay St

March 2019



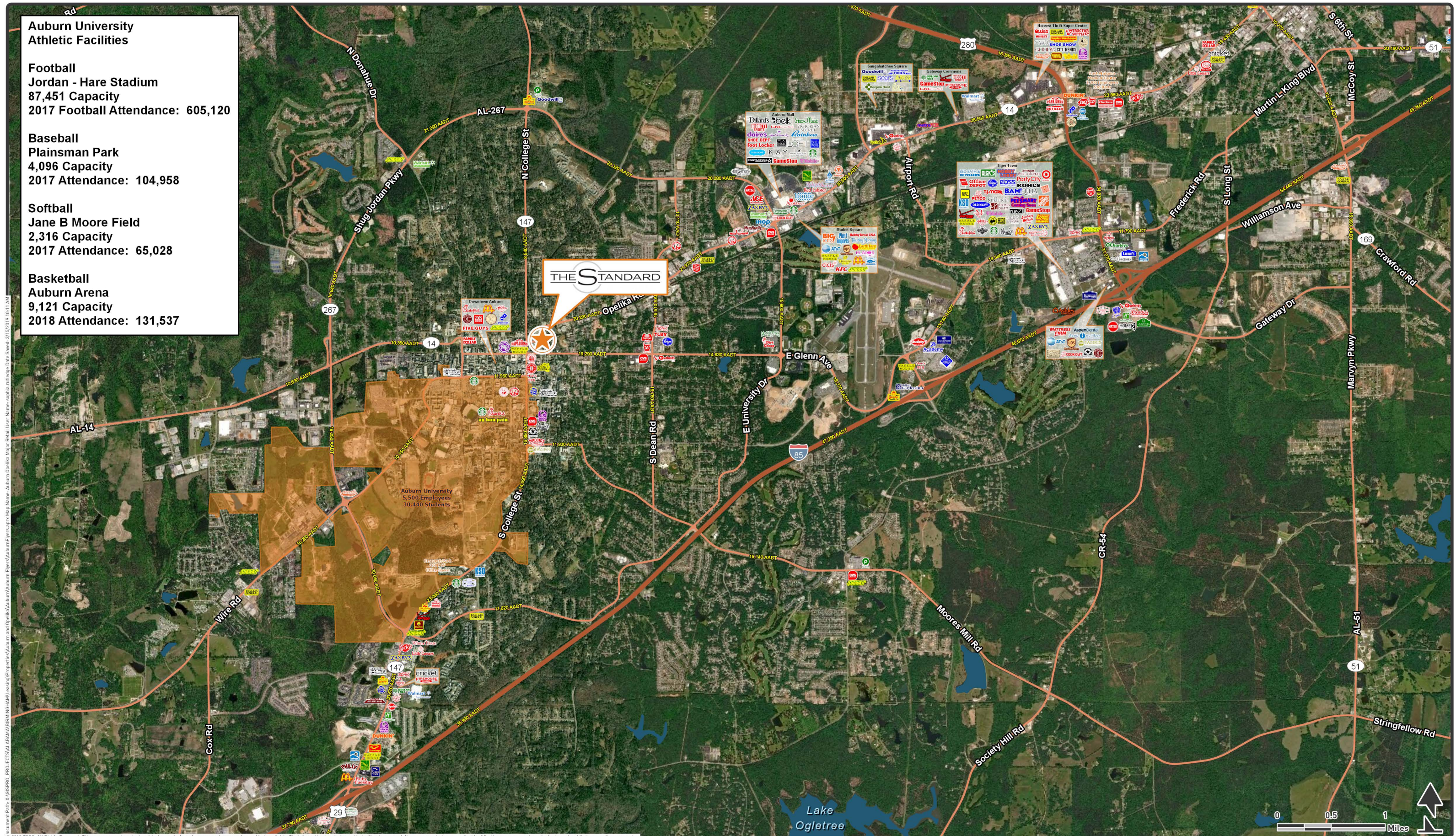
**Auburn University
Athletic Facilities**

Football
Jordan - Hare Stadium
87,451 Capacity
2017 Football Attendance: 605,120

Baseball
Plainsman Park
4,096 Capacity
2017 Attendance: 104,958

Softball
Jane B Moore Field
2,316 Capacity
2017 Attendance: 65,028

Basketball
Auburn Arena
9,121 Capacity
2018 Attendance: 131,537



© 2019 TSCG. All Rights Reserved. This map was produced using data from private and government sources deemed to be reliable. The information herein is provided without representation or warranty. Logos are for identification purposes and may be trademarks of their respective companies.

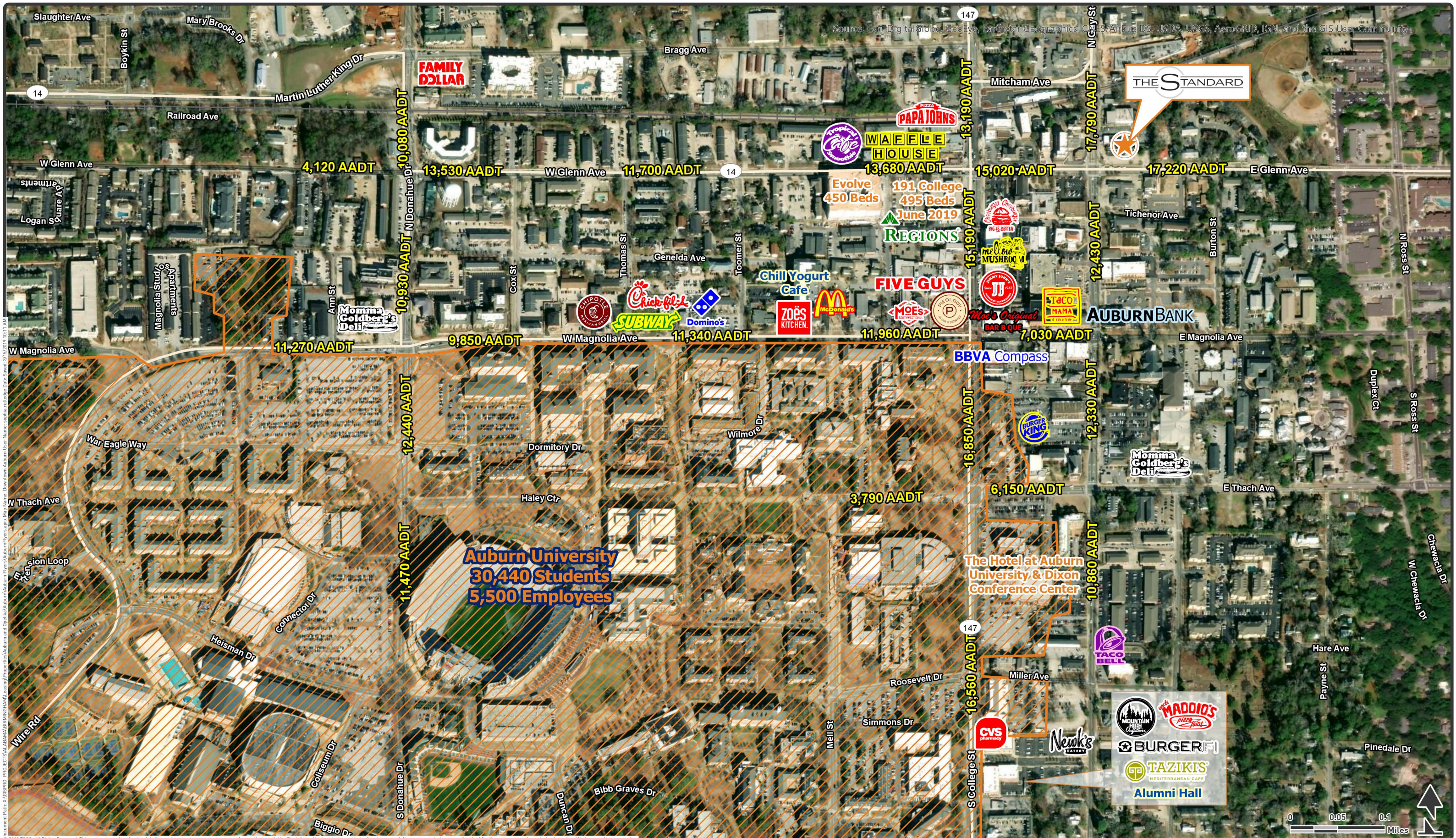
The Standard at Auburn

206 N Gay St



March 2019

Source: Esri, DigitalGlobe, GeoEye, Earthstar Geographics, CNES/Airbus DS, USDA, USGS, AeroGRID, IGN, and the GIS User Community



© 2019 TSCG. All Rights Reserved. This map was produced using data from private and government sources deemed to be reliable. The information herein is provided without representation or warranty. Logos are for identification purposes and may be trademarks of their respective companies.