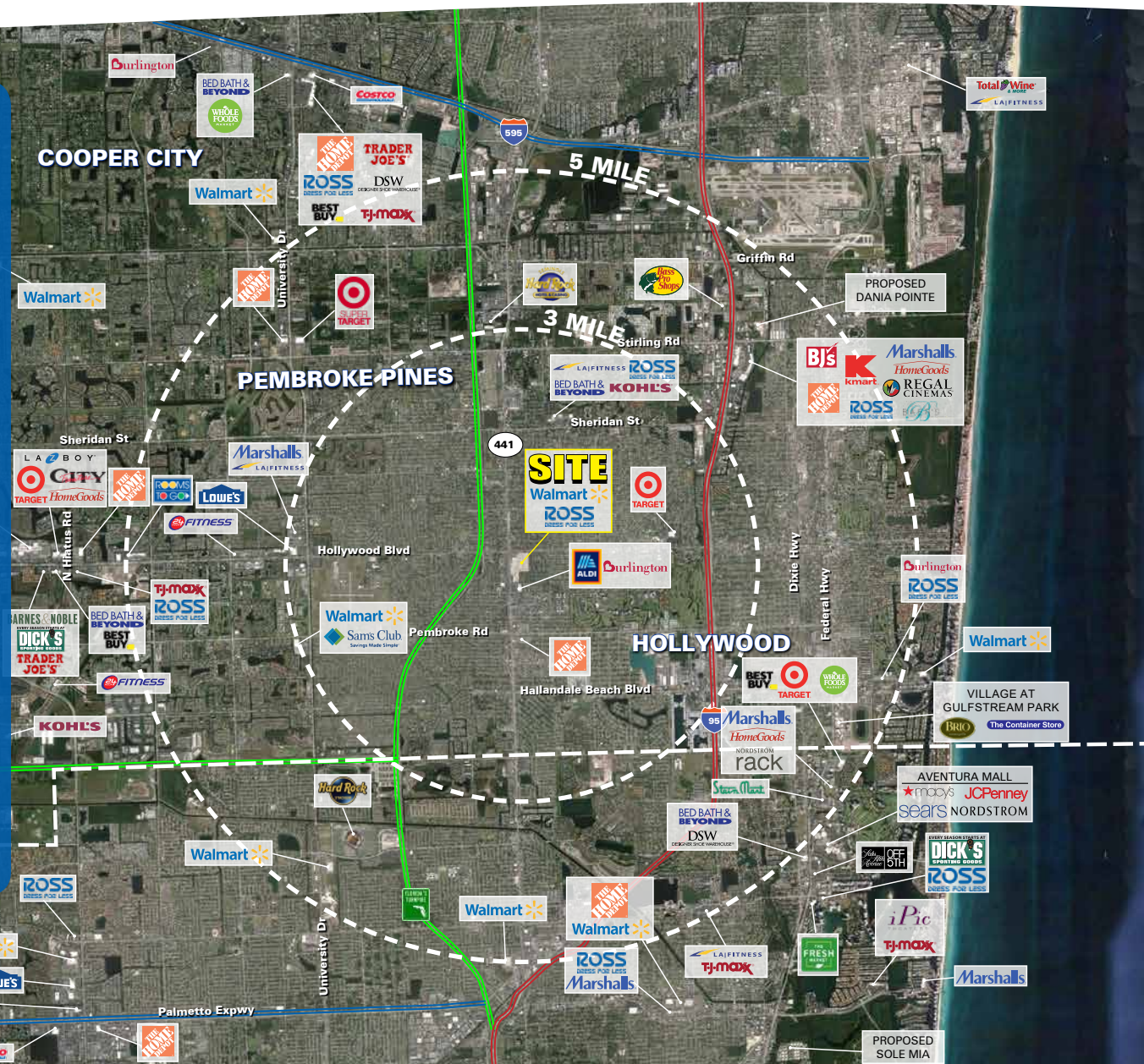


For Lease

- Located on the southeast corner of Hollywood Blvd & 441
- 40 Acre redevelopment in the heart of Broward County
- Over 80,000 cars travel the intersection daily
- Delivery - Immediately
- 1,200 - 3,600 SF retail/restaurant space available
- Property offers retailers the benefits of an immediate local population of almost 200,000 people in a 3 mile radius

2019 DEMOGRAPHICS	1 MILE	3 MILE	5 MILE
Population	22,514	182,980	464,665
Avg HH Income	\$60,718	\$67,878	\$68,083



Brent Andrews

561.424.3016
bandrews@atlanticretail.com

Elizabeth Wright

561.424.3026
ewright@atlanticretail.com

SITE
PET SUPERMARKET
DELIVERY
 1,200 - 3,600+/- SF AVAILABLE



38,000 ADT

Hollywood Blvd

OWNED SEPARATELY

38,000 ADT



\$67,878 **38,000**
 AVG HH INCOME ADT ON
 IN 3 MILE RADIUS HOLLYWOOD BLVD



HOLLYWOOD, FL
Hollywood Blvd & US 441

Brent Andrews
 561.424.3016
 bandrews@atlanticretail.com

Elizabeth Wright
 561.424.3026
 ewright@atlanticretail.com

ATLANTICRETAIL.COM



HOLLYWOOD, FL
Hollywood Blvd & US 441

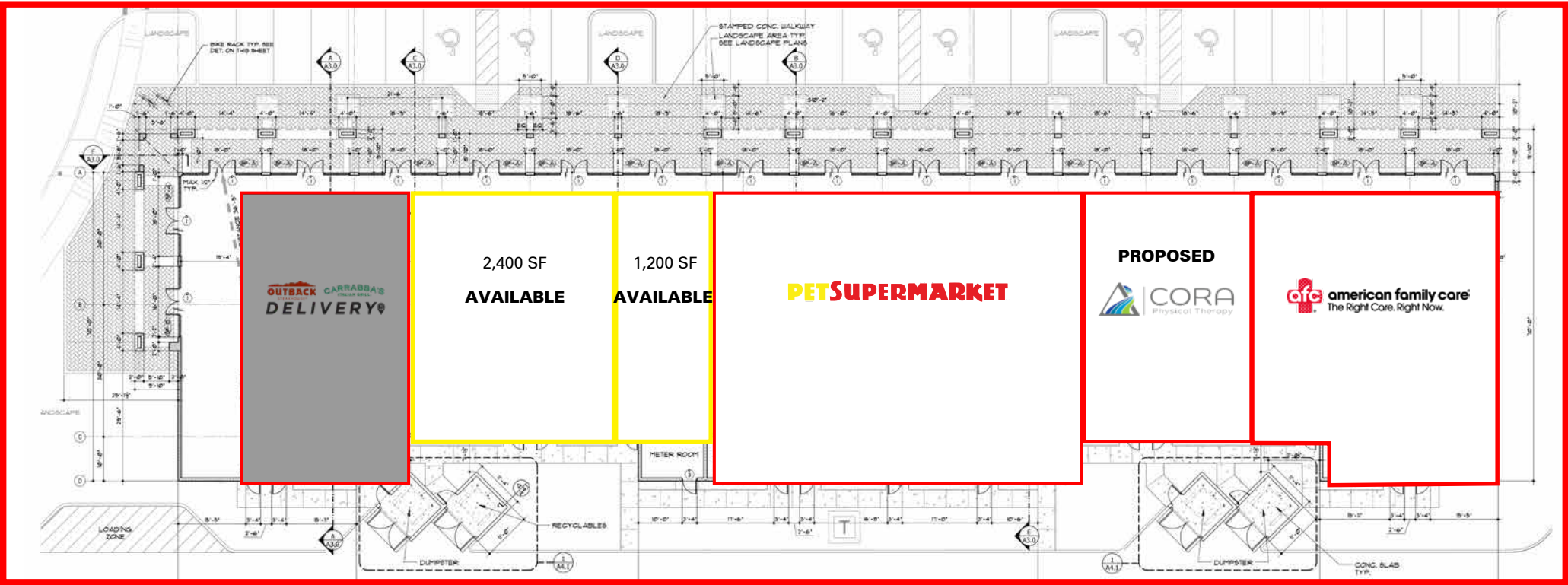
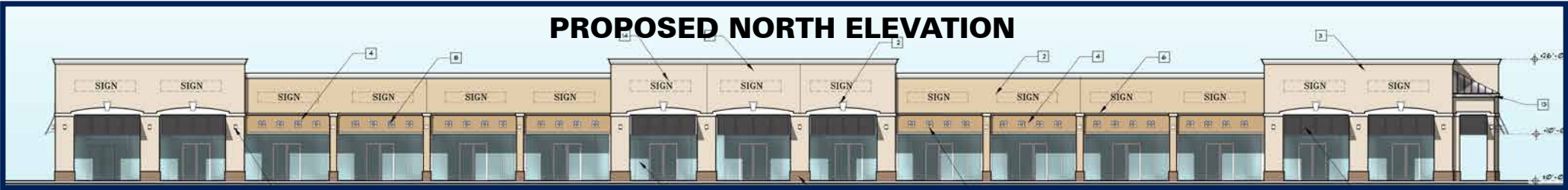
SITE PLAN OVERLAY

Brent Andrews
 561.424.3016
 bandrews@atlanticretail.com

Elizabeth Wright
 561.424.3026
 ewright@atlanticretail.com

ATLANTICRETAIL.COM

PROPOSED NORTH ELEVATION



HOLLYWOOD, FL
 Hollywood Blvd & US 441

RENDERING & SITE PLAN

Brent Andrews
 561.424.3016
 bandrews@atlanticretail.com

Elizabeth Wright
 561.424.3026
 ewright@atlanticretail.com

ATLANTICRETAIL.COM