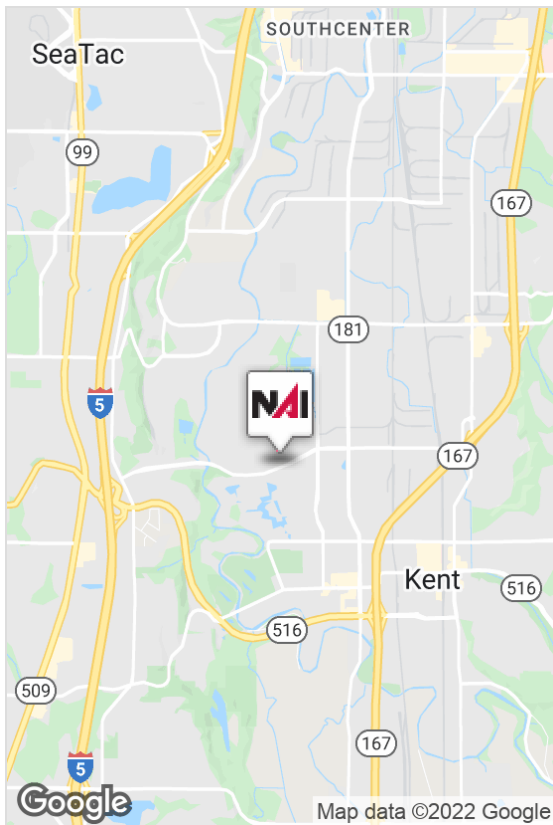


For Lease

Industrial For Lease



JTT Industrial Building

5836 S 228th Street, Kent, WA 98032

- 5,355 SF (Including 1,480 SF of Mezzanine)
- 1,980 SF Office
- 1 Grade level door
- 20' Clear Height
- Upgraded lighting
- 480V 3-phase power
- Easy access to I-5 (via 228th)
- Lease Rate:
\$1.00 Shell, NNN
\$1.10 Office
\$0.75 Mezz
- Available now

For more information:

Kent Channing

+1 425 586 5628 • kchanning@nai-ppsp.com

Arie Salomon, SIOR, CCIM

+1 425 586 5636 • asalomon@nai-ppsp.com



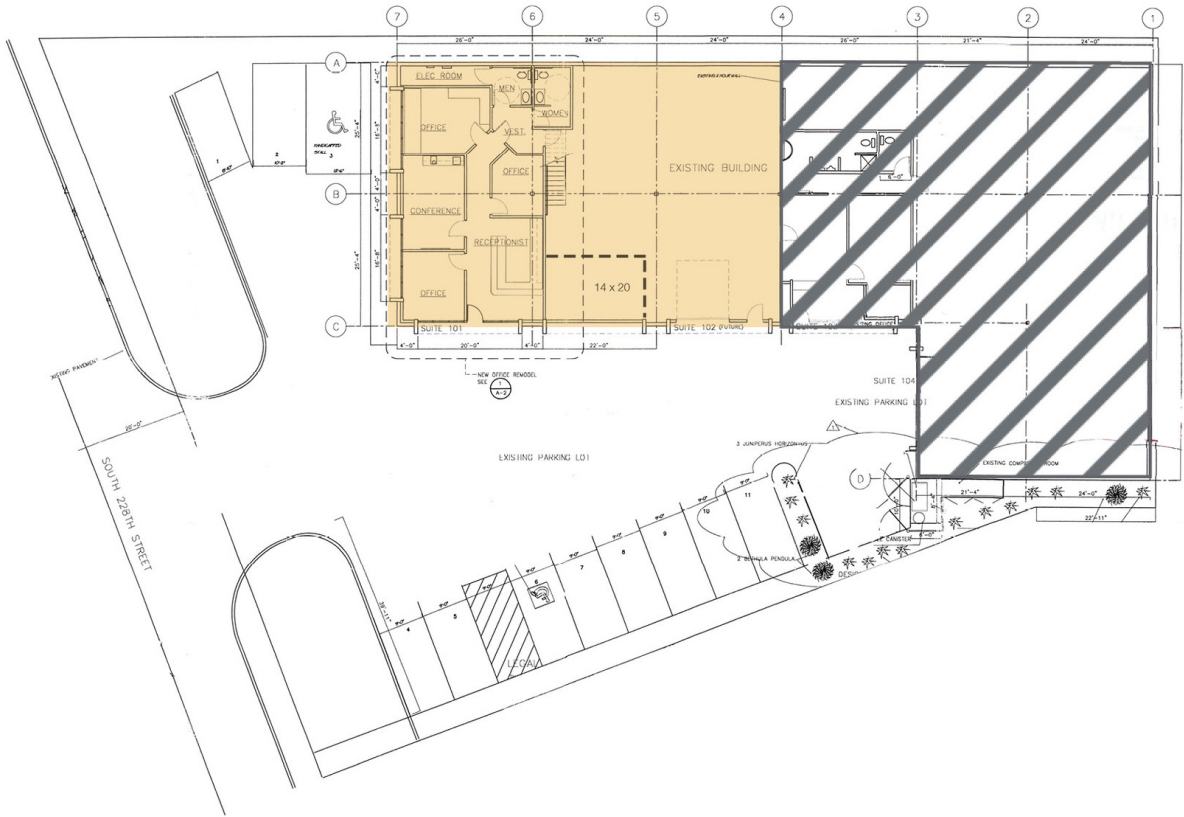
BELLEVUE | SEATTLE | TACOMA

THE INFORMATION CONTAINED HEREIN HAS BEEN GIVEN TO US BY THE OWNER OF THE PROPERTY OR OTHER SOURCES WE DEEM RELIABLE, WE HAVE NO REASON TO DOUBT ITS ACCURACY, BUT WE DO NOT GUARANTEE IT. ALL INFORMATION SHOULD BE VERIFIED PRIOR TO PURCHASE OR LEASE.

914 A Street, Suite 200
Tacoma, WA 98402
+1 253 383 3100
nai-ppsp.com

Industrial for Lease

JTT Industrial Building



BELLEVUE | TACOMA

914 A Street, Suite 200

Tacoma, WA 98402

+1 253 383 3100

nai-psp.com

THE INFORMATION CONTAINED HEREIN HAS BEEN GIVEN TO US BY THE OWNER OF THE PROPERTY OR OTHER SOURCES WE DEEM RELIABLE, WE HAVE NO REASON TO DOUBT ITS ACCURACY, BUT WE DO NOT GUARANTEE IT. ALL INFORMATION SHOULD BE VERIFIED PRIOR TO PURCHASE OR LEASE.