
5 Hanover Square

Prime Retail Available

FINANCIAL DISTRICT
NEW YORK, NY



NEWMARK

CIM Creating Value.
Enhancing Communities.

5 HANOVER SQUARE

Property Details

Location

On Pearl Street between Hanover and William Streets

Approximate Size

Ground Floor 1,902 SF

Term

Long term

Frontage

25 Feet on Hanover Square

Possession

Immediate

Site Status

Currently H&R Block Advisors

Adjacent Retail

The Little Beet, Sweetgreen, Starbucks, Joe & The Juice, Cava, Tend Dental, DIG, Le Labo, and &Pizza

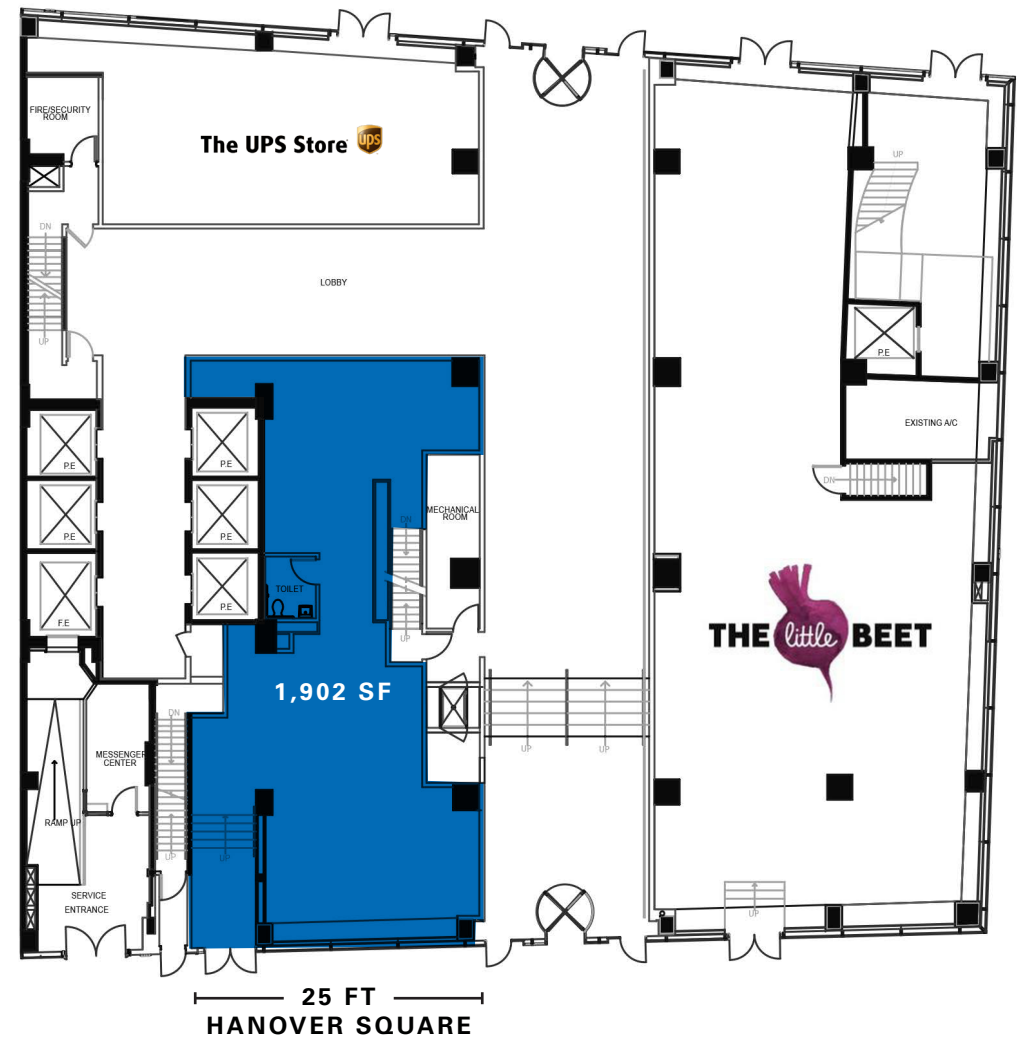
Additional Features

Basement storage available

At the base of a 25-story, 338,000-SF office tower in the heart of Lower Manhattan

Steps from the 2, 3, 4, 5, J and Z subway lines

Ground Floor



5 HANOVER SQUARE



⊕ COMING SOON

CONTACT

Ross Kaplan

t 212-850-5418

ross.kaplan@nrmk.com

William Chaplin

t 212-351-9352

william.chaplin@nrmk.com

nrmk.com