

# Property Overview



South Lyon Church

59255 10 Mile Road  
South Lyon, Michigan



Focus.

Strategy.

Results.

[www.gerdomrealty.com](http://www.gerdomrealty.com)

**59255 10 Mile Road, South Lyon, Michigan**

**Property Summary**



**Property: 59255 10 Mile Road, South Lyon, MI 48178**

**Offering: 7,200 Square Feet Available**

**Asking Rate: \$12.00 per Square Feet**

**NNN: TBD**

**Population: 29,413 (Three Miles)**

**Med HH Inc.: \$79,962 (Three Miles)**

**Traffic Count: 10,000 Vehicles per Day on 10 Mile Road**

This former Shepherd's Way Lutheran Church in the heart of South Lyon's rapidly expanding market is available. The subject is in excellent condition and can be used as-is for a Church facility. The building is situated on 4.4 Acres of land with 130 parking spaces. The 7,200 SF Church is equipped with a two large worship halls, three bathrooms, one kitchen, coat room, covered entrance, and multiple office and storage rooms. Located less than 1 mile east of downtown South Lyon, the site has excellent visibility and accessibility. And it's surrounded by dense residential population that is constantly growing!

**Listing Agents:**

**Michael Murphy  
Extension 112**

[mmurphy@gerdorealty.com](mailto:mmurphy@gerdorealty.com)

**Tjader Gerdom  
Extension 101**

[tgerdom@gerdomrealty.com](mailto:tgerdom@gerdomrealty.com)

The information contained herein was obtained from sources deemed reliable. While we trust these sources we cannot warrant or guarantee their accuracy.

**Gerdom Realty & Investment**

44725 Grand River Avenue, Suite #102, Novi, MI 48375

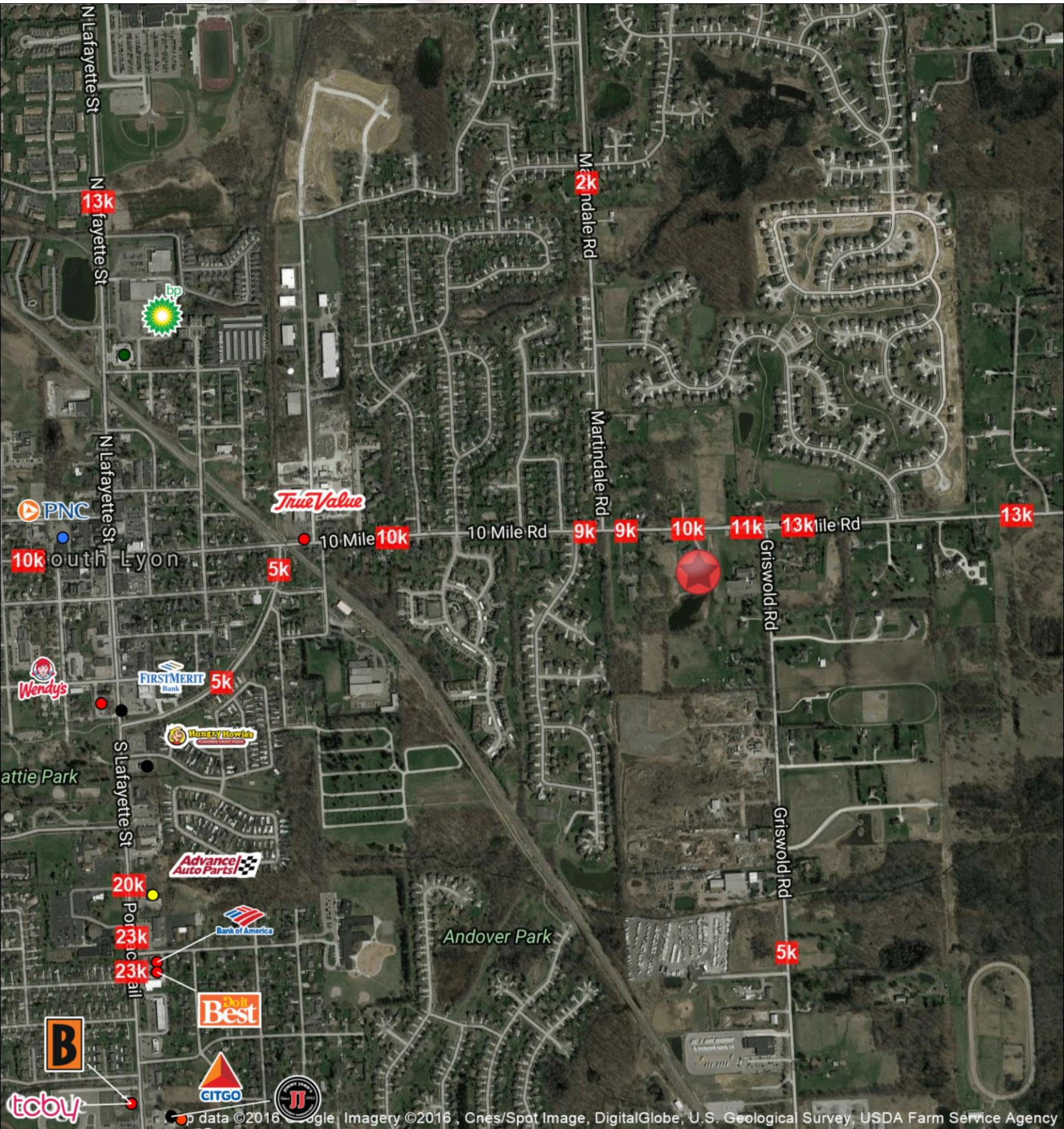
Phone: 248.242.6766 Fax: 866.301.9543

[www.gerdomrealty.com](http://www.gerdomrealty.com)



# 59255 10 Mile Road, South Lyon, Michigan

## Trade Area Aerial

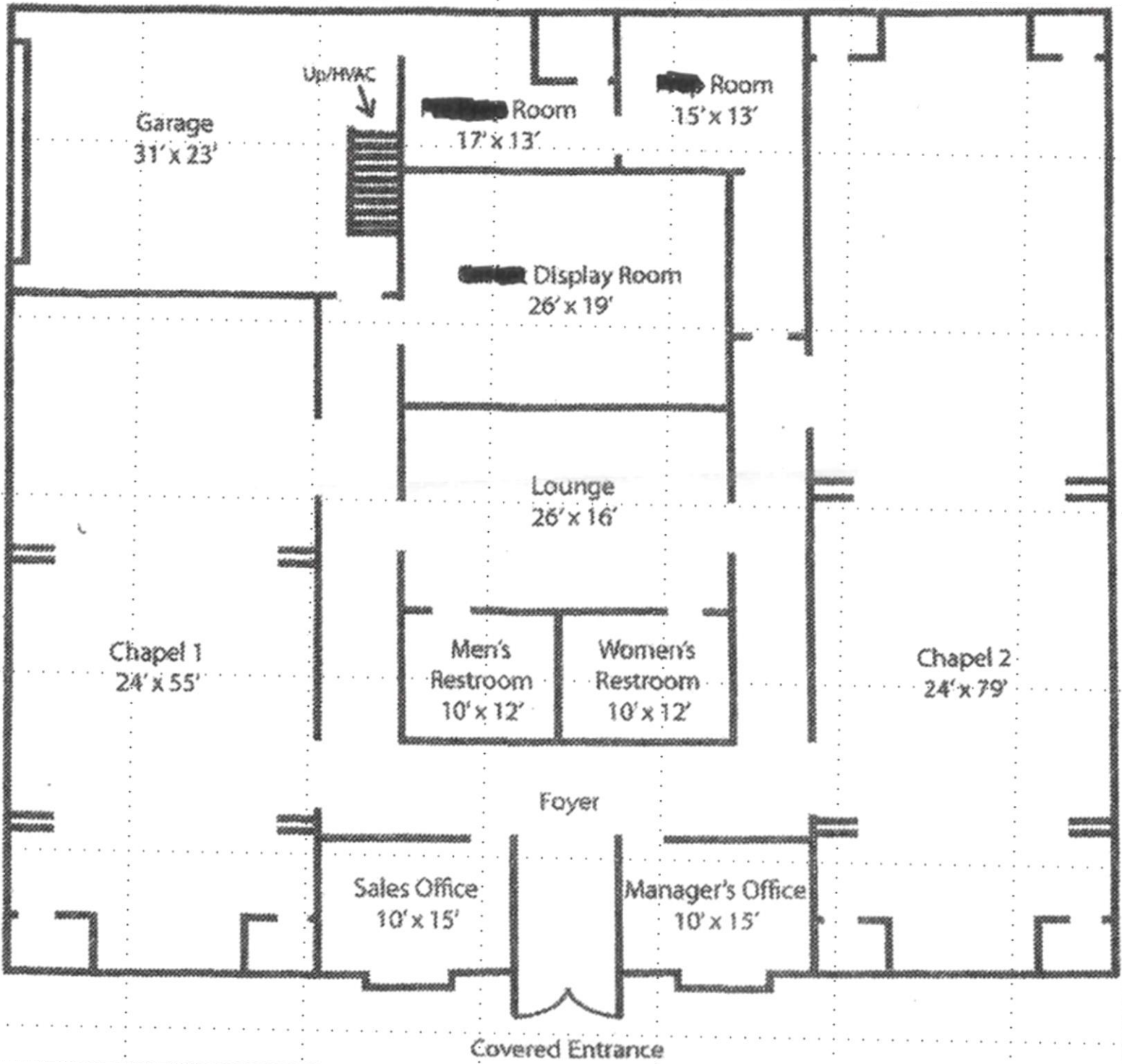


Map data ©2016 Google Imagery ©2016 Cnes/Spot Image, DigitalGlobe, U.S. Geological Survey, USDA Farm Service Agency





59255 10 Mile Road, South Lyon, Michigan  
Floor Plan



59255 10 Mile Road, South Lyon, Michigan  
Photographs



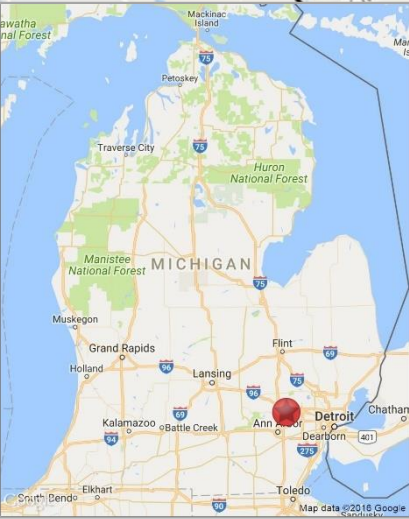
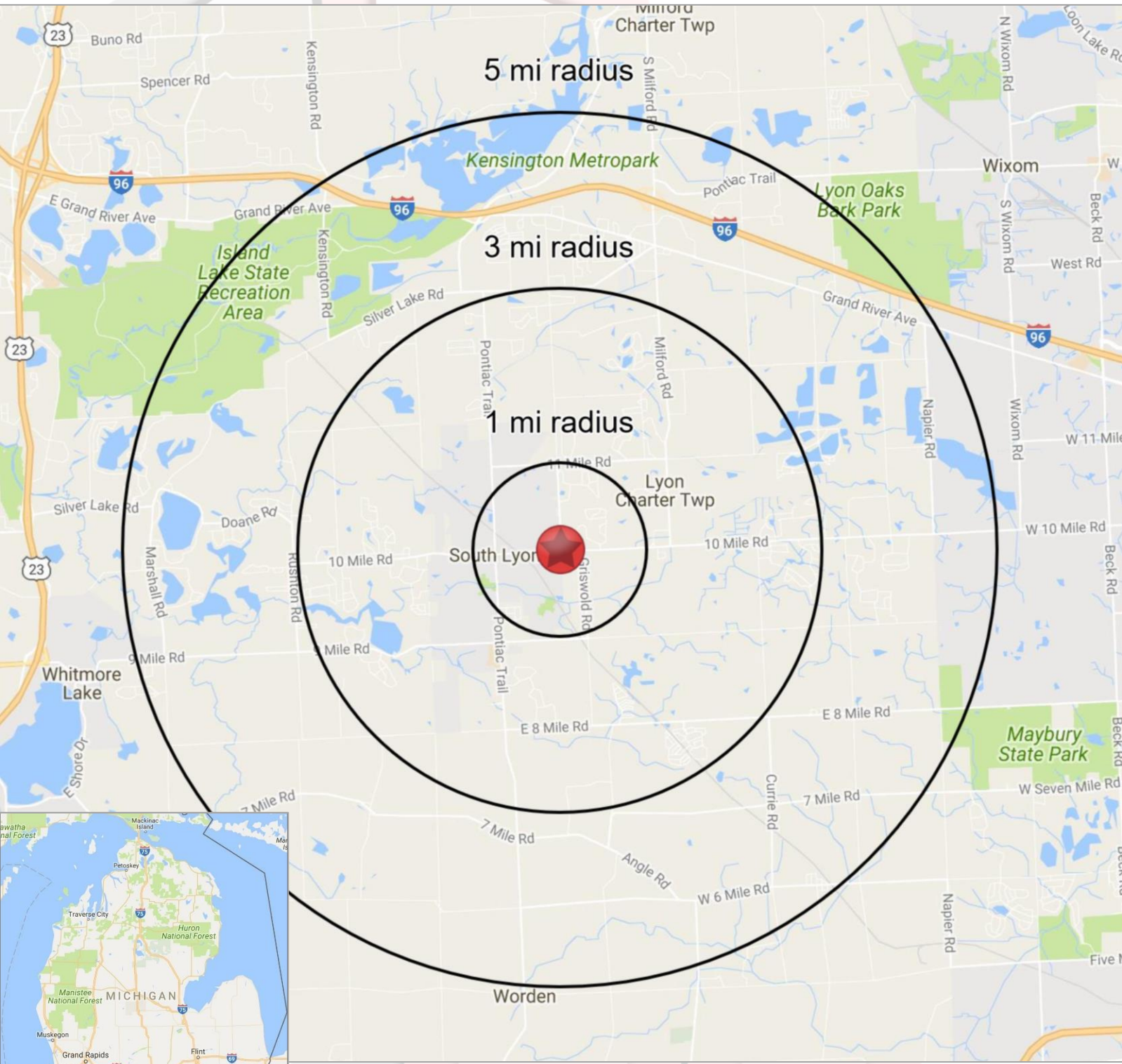


# 59255 10 Mile Road, South Lyon, Michigan Photographs





# 59255 10 Mile Road, South Lyon, Michigan



# 59255 10 Mile Road, South Lyon, Michigan

## FULL PROFILE

2000-2010 Census, 2016 Estimates with 2021 Projections

Calculated using Weighted Block Centroid from Block Groups



Lat/Lon: 42.4612/-83.6370

RF1

59225 10 Mile Rd

South Lyon, MI 48178

1 mi radius 3 mi radius 5 mi radius

		1 mi radius	3 mi radius	5 mi radius
POPULATION	2016 Estimated Population	7,491	29,413	47,307
	2021 Projected Population	7,576	29,965	48,199
	2010 Census Population	6,503	25,850	41,056
	2000 Census Population	5,026	21,744	35,058
	Projected Annual Growth 2016 to 2021	0.2%	0.4%	0.4%
	Historical Annual Growth 2000 to 2016	3.1%	2.2%	2.2%
HOUSEHOLDS	2016 Estimated Households	2,792	11,289	18,167
	2021 Projected Households	2,898	11,789	18,962
	2010 Census Households	2,361	9,701	15,473
	2000 Census Households	1,914	8,208	13,005
	Projected Annual Growth 2016 to 2021	0.8%	0.9%	0.9%
	Historical Annual Growth 2000 to 2016	2.9%	2.3%	2.5%
AGE	2016 Est. Population Under 10 Years	15.6%	13.4%	12.7%
	2016 Est. Population 10 to 19 Years	14.7%	14.3%	13.9%
	2016 Est. Population 20 to 29 Years	10.5%	10.1%	10.7%
	2016 Est. Population 30 to 44 Years	23.2%	20.0%	19.1%
	2016 Est. Population 45 to 59 Years	19.8%	22.3%	23.1%
	2016 Est. Population 60 to 74 Years	11.0%	14.1%	14.8%
	2016 Est. Population 75 Years or Over	5.2%	5.8%	5.7%
	2016 Est. Median Age	35.3	39.1	39.8
MARITAL STATUS & GENDER	2016 Est. Male Population	48.2%	48.7%	49.3%
	2016 Est. Female Population	51.8%	51.3%	50.7%
	2016 Est. Never Married	23.9%	23.7%	24.5%
	2016 Est. Now Married	55.0%	58.2%	57.7%
	2016 Est. Separated or Divorced	16.2%	12.0%	12.2%
	2016 Est. Widowed	4.9%	6.0%	5.6%
INCOME	2016 Est. HH Income \$200,000 or More	9.0%	8.3%	9.8%
	2016 Est. HH Income \$150,000 to \$199,999	9.7%	10.5%	9.6%
	2016 Est. HH Income \$100,000 to \$149,999	21.0%	19.4%	18.3%
	2016 Est. HH Income \$75,000 to \$99,999	12.0%	13.7%	12.5%
	2016 Est. HH Income \$50,000 to \$74,999	16.6%	16.9%	17.2%
	2016 Est. HH Income \$35,000 to \$49,999	8.9%	9.8%	10.4%
	2016 Est. HH Income \$25,000 to \$34,999	10.0%	9.0%	9.6%
	2016 Est. HH Income \$15,000 to \$24,999	8.4%	6.7%	6.8%
	2016 Est. HH Income Under \$15,000	4.3%	5.8%	5.9%
	2016 Est. Average Household Income	\$96,379	\$96,219	\$96,955
	2016 Est. Median Household Income	\$78,173	\$79,962	\$80,701
	2016 Est. Per Capita Income	\$35,978	\$36,953	\$37,250
	2016 Est. Total Businesses	201	936	1,546
2016 Est. Total Employees	1,500	8,353	15,008	

This report was produced using data from private and government sources deemed to be reliable. The information herein is provided without representation or warranty.



# 59255 10 Mile Road, South Lyon, Michigan

## FULL PROFILE

2000-2010 Census, 2016 Estimates with 2021 Projections

Calculated using Weighted Block Centroid from Block Groups



Lat/Lon: 42.4612/-83.6370

RF1

### 59255 10 Mile Rd

1 mi radius    3 mi radius    5 mi radius

### South Lyon, MI 48178

	1 mi radius	3 mi radius	5 mi radius	
<b>RACE</b>	2016 Est. White	91.5%	92.6%	91.8%
	2016 Est. Black	2.8%	2.5%	2.8%
	2016 Est. Asian or Pacific Islander	2.9%	2.5%	2.9%
	2016 Est. American Indian or Alaska Native	0.3%	0.3%	0.3%
	2016 Est. Other Races	2.5%	2.1%	2.3%
<b>HISPANIC</b>	2016 Est. Hispanic Population	215	849	1,444
	2016 Est. Hispanic Population	2.9%	2.9%	3.1%
	2021 Proj. Hispanic Population	3.8%	3.8%	3.9%
	2010 Hispanic Population	2.3%	2.4%	2.6%
<b>EDUCATION (Adults 25 or Older)</b>	2016 Est. Adult Population (25 Years or Over)	4,851	19,753	32,145
	2016 Est. Elementary (Grade Level 0 to 8)	1.8%	2.5%	1.9%
	2016 Est. Some High School (Grade Level 9 to 11)	3.7%	3.3%	4.0%
	2016 Est. High School Graduate	17.9%	23.7%	23.9%
	2016 Est. Some College	25.4%	22.3%	23.0%
	2016 Est. Associate Degree Only	8.7%	8.5%	8.7%
	2016 Est. Bachelor Degree Only	29.5%	26.5%	24.4%
	2016 Est. Graduate Degree	13.0%	13.1%	14.2%
<b>HOUSING</b>	2016 Est. Total Housing Units	2,880	11,729	18,889
	2016 Est. Owner-Occupied	78.8%	82.9%	82.9%
	2016 Est. Renter-Occupied	18.1%	13.3%	13.3%
	2016 Est. Vacant Housing	3.1%	3.7%	3.8%
<b>HOMES BUILT BY YEAR</b>	2010 Homes Built 2005 or later	6.0%	5.8%	6.4%
	2010 Homes Built 2000 to 2004	15.3%	12.5%	12.0%
	2010 Homes Built 1990 to 1999	30.4%	29.1%	24.9%
	2010 Homes Built 1980 to 1989	7.9%	11.8%	13.8%
	2010 Homes Built 1970 to 1979	15.5%	14.9%	15.7%
	2010 Homes Built 1960 to 1969	8.8%	8.4%	8.4%
	2010 Homes Built 1950 to 1959	6.0%	7.6%	7.7%
	2010 Homes Built Before 1949	10.1%	10.0%	11.1%
<b>HOME VALUES</b>	2010 Home Value \$1,000,000 or More	0.5%	0.6%	1.0%
	2010 Home Value \$500,000 to \$999,999	1.0%	1.8%	3.3%
	2010 Home Value \$400,000 to \$499,999	2.5%	2.7%	2.9%
	2010 Home Value \$300,000 to \$399,999	8.0%	10.0%	9.7%
	2010 Home Value \$200,000 to \$299,999	21.7%	21.1%	19.8%
	2010 Home Value \$150,000 to \$199,999	19.4%	16.9%	15.6%
	2010 Home Value \$100,000 to \$149,999	14.9%	14.0%	14.0%
	2010 Home Value \$50,000 to \$99,999	15.8%	18.7%	17.9%
	2010 Home Value \$25,000 to \$49,999	6.9%	8.7%	7.4%
	2010 Home Value Under \$25,000	9.2%	5.6%	8.3%
	2010 Median Home Value	\$150,326	\$155,885	\$154,642
	2010 Median Rent	\$740	\$742	\$759

This report was produced using data from private and government sources deemed to be reliable. The information herein is provided without representation or warranty.

# 59255 10 Mile Road, South Lyon, Michigan

## FULL PROFILE

2000-2010 Census, 2016 Estimates with 2021 Projections

Calculated using Weighted Block Centroid from Block Groups



Lat/Lon: 42.4612/-83.6370

RF1

59225 10 Mile Rd		1 mi radius	3 mi radius	5 mi radius
South Lyon, MI 48178				
LABOR FORCE	2016 Est. Labor Population Age 16 Years or Over	5,601	22,806	37,185
	2016 Est. Civilian Employed	65.6%	64.1%	64.8%
	2016 Est. Civilian Unemployed	1.5%	1.8%	1.8%
	2016 Est. in Armed Forces	-	-	0.1%
	2016 Est. not in Labor Force	32.8%	34.1%	33.4%
	2016 Labor Force Males	47.6%	48.2%	48.9%
	2016 Labor Force Females	52.4%	51.8%	51.1%
OCCUPATION	2010 Occupation: Population Age 16 Years or Over	3,012	11,875	18,740
	2010 Mgmt, Business, & Financial Operations	17.4%	17.2%	17.5%
	2010 Professional, Related	24.8%	25.1%	23.5%
	2010 Service	13.6%	15.1%	15.5%
	2010 Sales, Office	27.9%	26.6%	27.2%
	2010 Farming, Fishing, Forestry	0.3%	0.2%	0.2%
	2010 Construction, Extraction, Maintenance	5.7%	6.3%	6.9%
	2010 Production, Transport, Material Moving	10.4%	9.5%	9.2%
	2010 White Collar Workers	70.0%	68.9%	68.2%
	2010 Blue Collar Workers	30.0%	31.1%	31.8%
TRANSPORTATION TO WORK	2010 Drive to Work Alone	89.5%	89.2%	87.8%
	2010 Drive to Work in Carpool	5.5%	5.3%	6.4%
	2010 Travel to Work by Public Transportation	0.5%	0.3%	0.3%
	2010 Drive to Work on Motorcycle	-	-	-
	2010 Walk or Bicycle to Work	1.7%	0.9%	1.0%
	2010 Other Means	0.1%	0.2%	0.2%
	2010 Work at Home	2.8%	4.2%	4.3%
TRAVEL TIME	2010 Travel to Work in 14 Minutes or Less	14.3%	14.3%	15.6%
	2010 Travel to Work in 15 to 29 Minutes	36.3%	37.2%	37.4%
	2010 Travel to Work in 30 to 59 Minutes	40.2%	40.1%	38.8%
	2010 Travel to Work in 60 Minutes or More	9.3%	8.4%	8.2%
	2010 Average Travel Time to Work	28.8	28.4	27.8
CONSUMER EXPENDITURE	2016 Est. Total Household Expenditure	\$193 M	\$778 M	\$1.26 B
	2016 Est. Apparel	\$6.79 M	\$27.3 M	\$44.1 M
	2016 Est. Contributions, Gifts	\$14.2 M	\$57.4 M	\$93.6 M
	2016 Est. Education, Reading	\$8.15 M	\$32.7 M	\$52.9 M
	2016 Est. Entertainment	\$11.0 M	\$44.1 M	\$71.2 M
	2016 Est. Food, Beverages, Tobacco	\$28.9 M	\$116 M	\$187 M
	2016 Est. Furnishings, Equipment	\$6.81 M	\$27.5 M	\$44.3 M
	2016 Est. Health Care, Insurance	\$16.4 M	\$65.9 M	\$106 M
	2016 Est. Household Operations, Shelter, Utilities	\$59.9 M	\$241 M	\$388 M
	2016 Est. Miscellaneous Expenses	\$2.78 M	\$11.2 M	\$18.0 M
	2016 Est. Personal Care	\$2.49 M	\$10.0 M	\$16.2 M
	2016 Est. Transportation	\$36.1 M	\$145 M	\$234 M

This report was produced using data from private and government sources deemed to be reliable. The information herein is provided without representation or warranty.